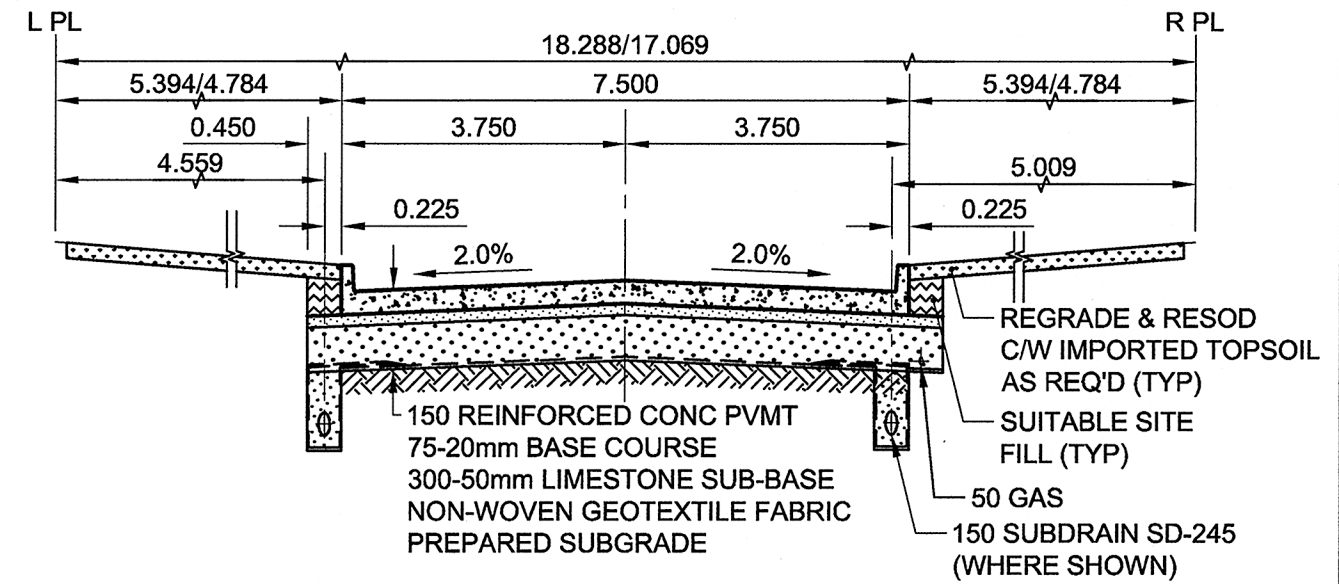
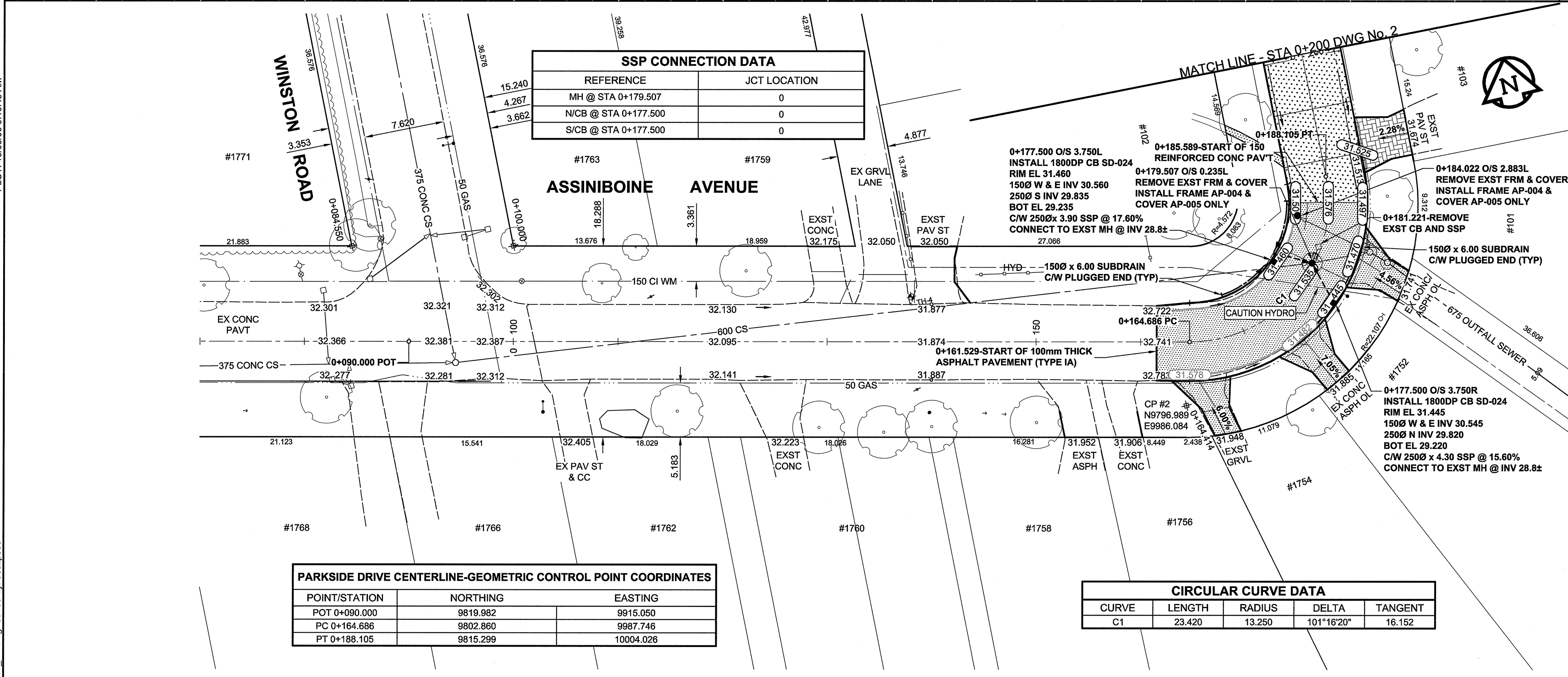
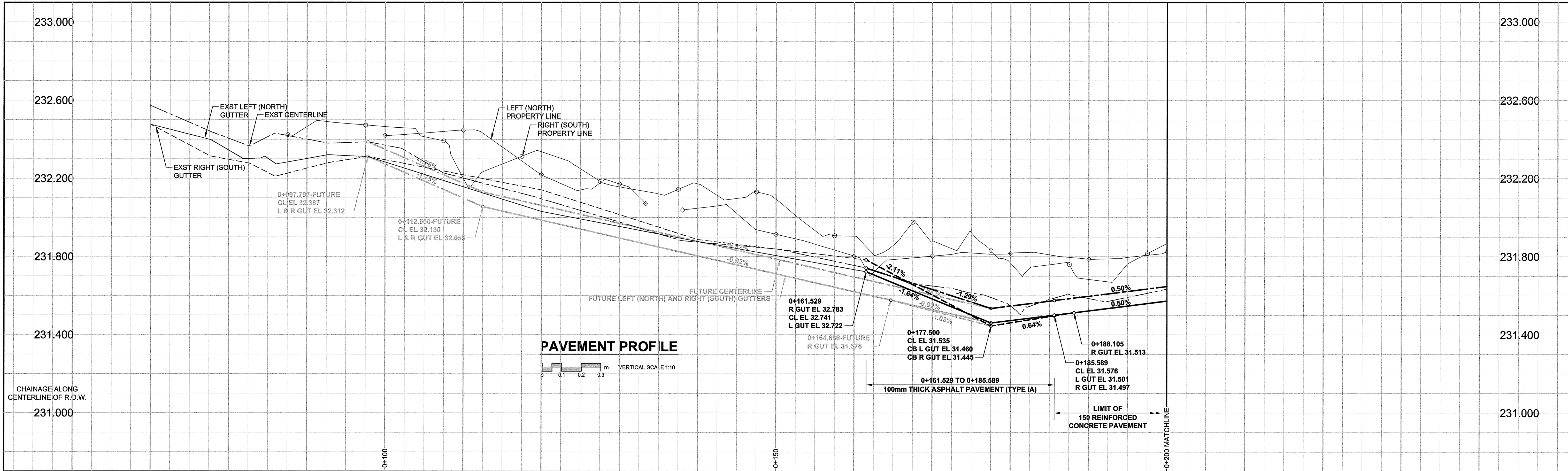


A1 SIZE 23.4" x 33.1" (594mm x 841mm)

PLOT: 1005006 9:10:49 AM

AECOM FILE NAME: 060143720\_01-CT1001\_RX.dwg\_Saved By: doszpodd



**PVT SECTION**  
 H=1:100  
 V=1:50  
 PARKSIDE DRIVE PAVEMENT RECONSTRUCTION SECTION TYPICAL

- NOTES**
- ADJUST MH AND CB RIMS TO NEW GRADES.
  - LAMP STANDARDS, HYDRO POLES, AND ANCHORS MAY REQUIRE TEMPORARY SUPPORT/REMOVAL OR REPLACEMENT AT THE CONTRACTOR'S EXPENSE.
  - CONTRACTOR SHALL REGRADE/RENEW EXST PRIVATE SIDEWALKS TO LIMITS AS SHOWN. SIDEWALKS TO BE RENEWED WITH CONCRETE UNLESS NOTED OTHERWISE.
  - LIP CURBS TO BE UTILIZED AT APPROACHES, APPROACHES TO BE RENEWED TO LIMITS, AND WITH MATERIALS, AS SHOWN.
  - CONTRACTOR SHALL TAKE PRECAUTIONARY STEPS TO PROTECT BOULEVARD TREES FROM DAMAGE FROM CONSTRUCTION ACTIVITIES WITHIN THE LIMITS OF CONSTRUCTION AS OUTLINED IN THE SPECIFICATIONS.
  - THE LOCATION OF ALL SERVICES TO BE CONFIRMED IN THE FIELD BY THE CONTRACTOR.
  - ADD 200.000m TO ABBREVIATED ELEVATIONS TO OBTAIN GEODETIC ELEVATIONS.

**PARKSIDE DRIVE CENTERLINE-GEOMETRIC CONTROL POINT COORDINATES**

POINT/STATION	NORTHING	EASTING
POT 0+090.000	9819.982	9915.050
PC 0+164.686	9802.860	9987.746
PT 0+188.105	9815.299	10004.026

**CIRCULAR CURVE DATA**

CURVE	LENGTH	RADIUS	DELTA	TANGENT
C1	23.420	13.250	101°16'20"	16.152

EXISTING	LEGEND - PLAN	NEW	EXISTING	LEGEND - PLAN	NEW	EXISTING	LEGEND - PLAN	NEW	
	GAS		MANHOLE		CONCRETE PAVEMENT		LOCATION APPROVED		BM 38-046 ELEV 232.911
	MTS		CATCH BASIN / CATCH PIT		ASPHALT PAVEMENT		SUPR. UG STRUCTURES		AECOM
	HYDRO		CURB INLET WITH BOX		CONC. SIDEWALK/MEDIAN		DATE		DESIGNED BY WRJ
	CAT/W/O		TREE		PAVING STONE		COMMITTEE		CHECKED BY RPB
	TRAFFIC SIGNALS/PIT		TEST HOLE		GRAVEL		NOTE:		APPROVED BY TGS
	LAND DRAINAGE SEWER		PROPERTY LINE		RAMP CURB		LOCATION OF UNDERGROUND STRUCTURES AS SHOWN ARE BASED ON THE BEST INFORMATION AVAILABLE. BUT NO GUARANTEE IS GIVEN THAT ALL EXISTING UTILITIES ARE SHOWN OR THAT THE GIVEN LOCATIONS ARE EXACT. CONFIRMATION OF EXISTENCE AND EXACT LOCATION OF ALL SERVICES MUST BE OBTAINED FROM THE INDIVIDUAL UTILITIES BEFORE PROCEEDING WITH CONSTRUCTION.		DATE 10/05/06
	SANITARY/COMBINED SEWER		SURVEY BAR		PLANING/REMOVAL		REVISIONS		DATE 10/05/06
	SSP/DCP		FENCE						RELEASED FOR CONSTRUCTION
	WATERMAIN		BOC/EOPAVT						DATE 10/05/06
	SUBDRAIN		ELEVATION (33.100)						CONSULTANT DRAWING NO. 060143720_01-CT1001_RX.dwg
	DITCH		TRAFFIC SIGN						THE CITY OF WINNIPEG
	LEGEND - PLAN		LEGEND - PLAN						PUBLIC WORKS DEPARTMENT

**LOCATION APPROVED UNDERGROUND STRUCTURES**

SUPR. UG STRUCTURES COMMITTEE DATE

NOTE: LOCATION OF UNDERGROUND STRUCTURES AS SHOWN ARE BASED ON THE BEST INFORMATION AVAILABLE. BUT NO GUARANTEE IS GIVEN THAT ALL EXISTING UTILITIES ARE SHOWN OR THAT THE GIVEN LOCATIONS ARE EXACT. CONFIRMATION OF EXISTENCE AND EXACT LOCATION OF ALL SERVICES MUST BE OBTAINED FROM THE INDIVIDUAL UTILITIES BEFORE PROCEEDING WITH CONSTRUCTION.

**REVISIONS**

NO.	REVISIONS	DATE	BY
0	ISSUED FOR CONSTRUCTION	10/05/06	DID

**PROFESSIONAL'S SEAL**

PROVINCE OF MANITOBA  
 REGISTERED PROFESSIONAL ENGINEER  
 R. P. BRUCE  
 Date: May 6/10

CONSULTANT DRAWING NO. 060143720\_01-CT1001\_RX.dwg

**METRIC**  
 WHOLE NUMBERS INDICATE MILLIMETRES  
 DECIMALIZED NUMBERS INDICATE METRES

**THE CITY OF WINNIPEG**  
 PUBLIC WORKS DEPARTMENT  
 ENGINEERING DIVISION

**2010 LOCAL STREET RENEWAL PROGRAM**  
**PARKSIDE DRIVE**  
 ASSINBOINE AVENUE TO WINSTON ROAD  
 HORIZONTAL AND VERTICAL ALIGNMENT  
 STA 0+070 TO STA 0+200

CITY DRAWING NUMBER N/A  
 SHEET 1 OF 6  
 DRAWING No. 1  
 REV 0

BID OPPORTUNITY NO. 279-2010