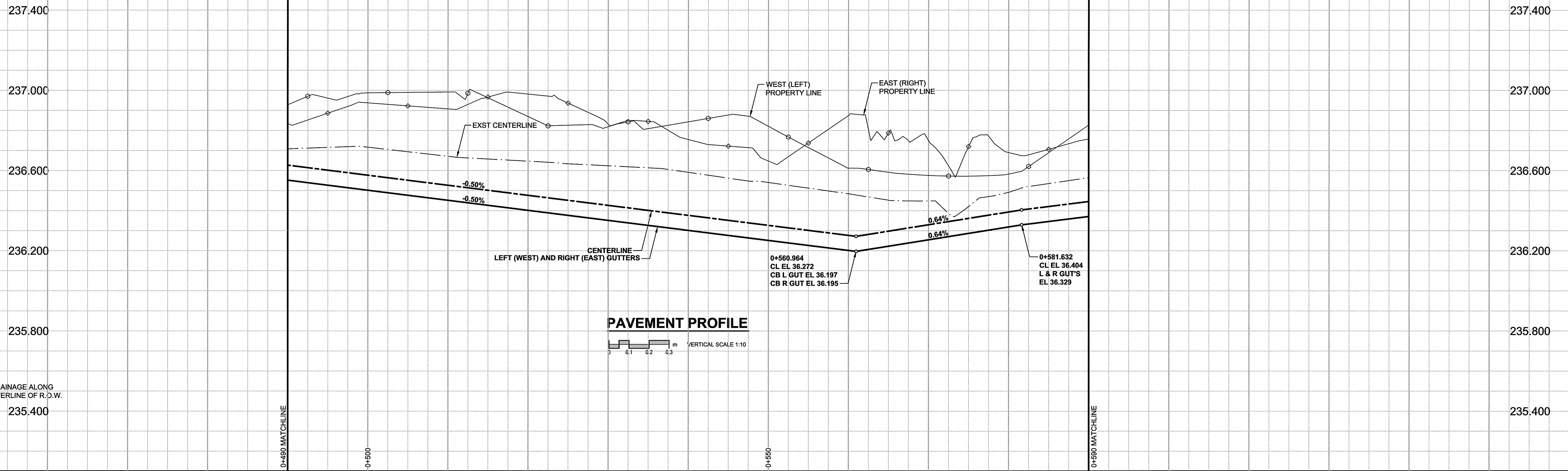


A1 SIZE 23.4" x 33.1" (594mm x 841mm)

PLOT: 10/04/28 9:41:44 AM

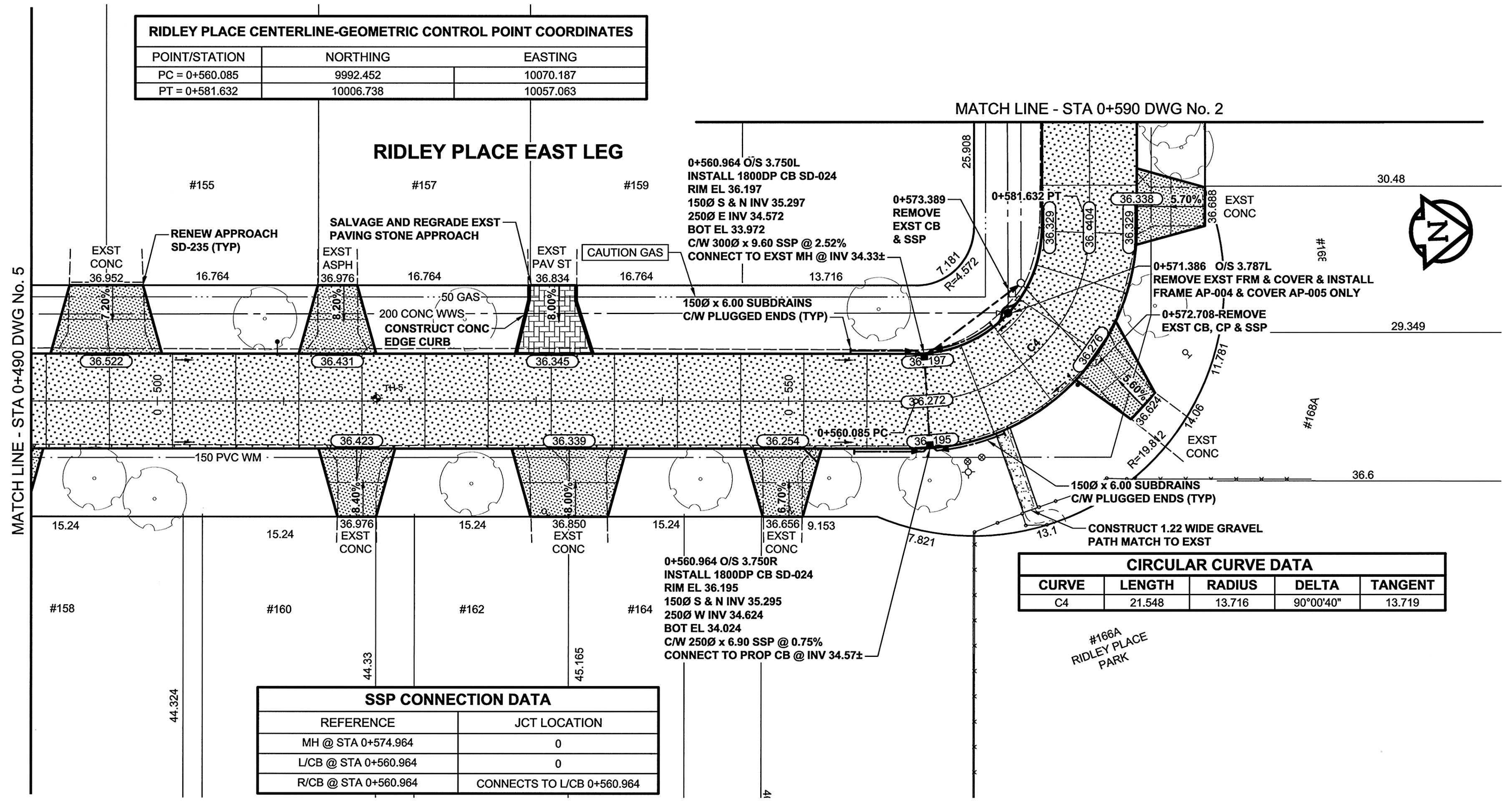
AECOM FILE NAME: 060144310_04-CT1006_RX.dwg Saved By: ddszpcrd



PAVEMENT PROFILE
VERTICAL SCALE 1:10

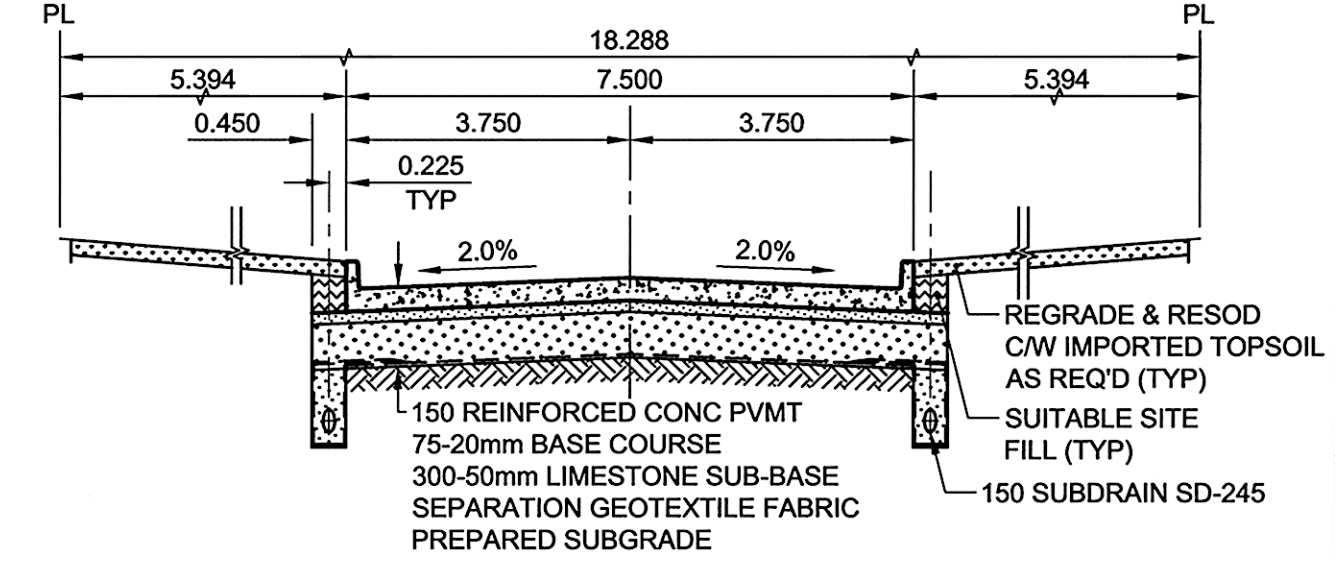
RIDLEY PLACE CENTERLINE-GEOMETRIC CONTROL POINT COORDINATES

POINT/STATION	NORTHING	EASTING
PC = 0+560.085	9992.452	10070.187
PT = 0+581.632	10006.738	10057.063



SSP CONNECTION DATA

REFERENCE	JCT LOCATION
MH @ STA 0+574.964	0
L/CB @ STA 0+560.964	0
R/CB @ STA 0+560.964	CONNECTS TO L/CB 0+560.964



PVMT SECTION



RIDLEY PLACE - EAST & WEST LEGS PAVEMENT RECONSTRUCTION SECTION TYPICAL

- NOTES**
- ADJUST MH AND CB RIMS TO NEW GRADES.
 - LAMP STANDARDS, HYDRO POLES, AND ANCHORS MAY REQUIRE TEMPORARY SUPPORT/REMOVAL OR REPLACEMENT AT THE CONTRACTOR'S EXPENSE.
 - CONTRACTOR SHALL REGRADE/RENEW EXIST PRIVATE SIDEWALKS TO LIMITS AS SHOWN. SIDEWALKS TO BE RENEWED WITH CONCRETE UNLESS NOTED OTHERWISE.
 - LIP CURB TO BE UTILIZED AT APPROACHES. APPROACHES TO BE RENEWED TO LIMITS, AND WITH MATERIALS AS SHOWN.
 - CONTRACTOR SHALL TAKE PRECAUTIONARY STEPS TO PROTECT BOULEVARD TREES FROM DAMAGE FROM CONSTRUCTION ACTIVITIES WITHIN THE LIMITS OF CONSTRUCTION AS OUTLINED IN THE SPECIFICATIONS.
 - CB (SD-024), OFFSETS MEASURED TO B.O.C. LOCATIONS.
 - THE LOCATION OF ALL SERVICES TO BE CONFIRMED IN THE FIELD BY THE CONTRACTOR.
 - ADD 200.000m TO ABBREVIATED ELEVATIONS TO OBTAIN GEODETIC ELEVATIONS.

AECOM
Certificate of Authorization
AECOM Canada Ltd.
No. 4671 Date: April 28/10

METRIC
WHOLE NUMBERS INDICATE MILLIMETRES
DECIMALIZED NUMBERS INDICATE METRES
BID OPPORTUNITY NO. 280-2010

EXISTING	LEGEND - PLAN	NEW	EXISTING	LEGEND - PLAN	NEW	EXISTING	LEGEND - PLAN	NEW
○	MANHOLE	●	CONCRETE PAVEMENT	▨	LOCATION APPROVED UNDERGROUND STRUCTURES	BM 40-026		
△	CATCH BASIN / CATCH PIT	■	ASPHALT PAVEMENT	▩		ELEV 237.452		
□	CURB INLET WITH BOX	▲	CONC. SIDEWALK/MEDIAN	▧				
○	TREE	○	PAVING STONE	▨				
⊕	TEST HOLE	⊕	GRAVEL	▨				
—	PROPERTY LINE	—	RAMP CURB	▨				
—	SURVEY BAR	—	PLANING/REMOVAL	▨				
—	FENCE	—						
—	BOC/EOPAVT	—						
—	ELEVATION (33.100)	—						
—	TRAFFIC SIGN	—						

LOCATION APPROVED UNDERGROUND STRUCTURES
DATE COMMITTEE
NOTE: LOCATION OF UNDERGROUND STRUCTURES AS SHOWN ARE BASED ON THE BEST INFORMATION AVAILABLE. BUT NO GUARANTEE IS GIVEN THAT ALL EXISTING UTILITIES ARE SHOWN OR THAT THE GIVEN LOCATIONS ARE EXACT. CONFIRMATION OF EXISTENCE AND EXACT LOCATION OF ALL SERVICES MUST BE OBTAINED FROM THE INDIVIDUAL UTILITIES BEFORE PROCEEDING WITH CONSTRUCTION.

NO.	ISSUED FOR CONSTRUCTION	DATE	BY
0	ISSUED FOR CONSTRUCTION	10/04/29	DID
	REVISIONS	YYMMDD	

AECOM

DESIGNED BY: WRJ
DRAWN BY: DID
HOR. SCALE: 1:250
VERT. SCALE: 1:10
DATE: 10/04/29

CHECKED BY: JGK
APPROVED BY: TGS
RELEASED FOR CONSTRUCTION
DATE: APR 28/10

PROFESSIONAL'S SEAL
R. P. BRUCE
REGISTERED PROFESSIONAL ENGINEER
CONSULTANT DRAWING NO. 060144310_04-CT1006_RX.dwg

THE CITY OF WINNIPEG
PUBLIC WORKS DEPARTMENT
ENGINEERING DIVISION

2010 LOCAL STREET RENEWAL PROGRAM
RIDLEY PLACE (EAST & WEST LEGS)
RIDLEY STREET TO RIDLEY STREET
HORIZONTAL AND VERTICAL ALIGNMENT
STA 0+490 TO STA 0+590

CITY DRAWING NUMBER: N/A
SHEET 6 OF 10
DRAWING No. 6
REV 0