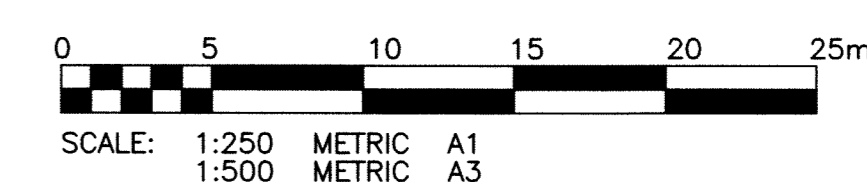
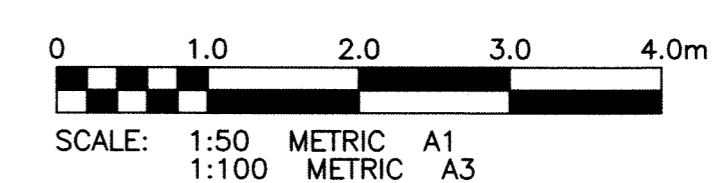


- NOTE:**
1. STATION CHAINAGE IS BASED ON CENTRELINE OF CORYDON AVENUE.
 2. ADJUST MH AND CB RIMS TO NEW GRADES IN MILL & FILL SECTION USING LIFTER RINGS.
 3. REGRADE EXISTING PRIVATE SIDEWALKS AS REQUIRED.
 4. AVOID DAMAGE TO EXISTING TREES WITHIN THE LIMITS OF CONSTRUCTION.
 5. ISOLATE ALL POLES, BASES AND PILES WITHIN BUS STOP SIDEWALK (SD-228C).
 6. ALL PAVEMENT MEASUREMENTS ARE TO BACK OF CURB.
 7. CONTACT TERASPAN TO LOWER FIBRE OPTIC CABLE WHERE REQUIRED.
 8. INSTALL DETECTABLE WARNING SURFACE TILES IN ACCORDANCE WITH SPECIFICATION E17.
 9. CAUTION: THE TERASPAN CABLE IS LOCATED ALONG THE ENTIRE LENGTH OF THE PROJECT AND WITHIN 300mm OF THE GROUND/PAVEMENT SURFACE.

PROPERTY LIMITS DELINEATION
 DELINEATION OF PROPERTY LIMITS AS SHOWN ON THIS DWG DOES NOT REPRESENT A "LEGAL SURVEY". KGS GROUP MAKES NO REPRESENTATION OR WARRANTY AS TO THE ACCURACY OF PROPERTY LIMITS DELINEATED ON THIS DWG, NOR ON THE DIMENSIONAL ACCURACY OF DWG FEATURES RELATIVE TO THOSE PROPERTY LIMITS.

- WARNING**
1. NOTIFY THE GAS COMPANY OF THE PROPOSED LOCATION OF EXCAVATION.
 2. TAKE PRECAUTION TO AVOID DAMAGE TO GAS COMPANY INSTALLATIONS.
 3. SEE PROVINCIAL REGULATION 210/72 FOR DETAILS.



METRIC
 WHOLE NUMBERS INDICATE MILLIMETRES
 DECIMALIZED NUMBERS INDICATE METRES

APEGM
 Certificate of Authorization
 KGS Group
 No. 245 Date: APR 1, 2010

P:\Projects\2009\09-0107-23\Doc Control\Issued\Source\DWG\09-0107-23_01-REV.dwg - Tab: 001 Plotted By: Dberche 04/05/2010 [Mon 10:50am]

300 LDS	LAND DRAINAGE SEWER	300 LDS	BACK OF CURB		
250 WWS	WASTE WATER SEWER	250 WWS	CONCRETE		
	GAS		ASPHALT		
	HYDRO		SIDEWALK		
	M.T.S.		CURB RAMP		
150 WM	WATERMAIN	150 WM	PROPERTY LINE		
	HYDRANT		DETECTABLE WARNING TILES		
	VALVE		TEST HOLE		
	MANHOLE		GUY WIRE		
	CATCH BASIN		TREE		
	CURB INLET		SURVEY BAR		
	LIGHT STANDARD		GEODETIC BENCHMARK		
	POLES		ELEVATION		
EXISTING	LEGEND-PLAN	PROPOSED	EXISTING	LEGEND-PLAN	PROPOSED

LOCATION APPROVED UNDERGROUND STRUCTURES

SUPV. U/G STRUCTURES COMMITTEE DATE

NOTE:
 LOCATION OF UNDERGROUND STRUCTURES AS SHOWN ARE BASED ON THE BEST INFORMATION AVAILABLE BUT NO GUARANTEE IS GIVEN THAT ALL EXISTING UTILITIES ARE SHOWN OR THAT THE GIVEN LOCATIONS ARE EXACT. COOPERATION OF EXISTENCE AND EXACT LOCATION OF ALL SERVICES MUST BE OBTAINED FROM THE INDIVIDUAL UTILITIES BEFORE PROCEEDING WITH CONSTRUCTION.

B.M. 51-025	N.E. CORNER CORYDON AVE & RENFREW ST
ELEV. 234.791	TBLT IN W. CONC. FOUNDATION OF RENFREW SHOPPING CENTRE, 1.5m N, 0.2m BELOW BRICK S.W. CORNER BLDG.
NO.	REVISIONS
0	ISSUED FOR TENDER 10/04/08
	DATE BY

KGS GROUP CONSULTING ENGINEERS	
DESIGNED BY: JDF	CHECKED BY: MCR
DRAWN BY: GEL	APPROVED BY: RJH
HOR. SCALE: 1:250	RELEASED FOR CONSTRUCTION:
VERTICAL: 1:50	DATE
10/03/08	

ENGINEER'S SEAL

 CONSULTANT DRAWING NO.
09-0107-23_001

THE CITY OF WINNIPEG
 PUBLIC WORKS DEPARTMENT
 TRANSPORTATION ENGINEERING DIVISION

PROJECT TITLE
CORYDON AVENUE EASTBOUND PAVEMENT MILL AND FILL & RECONSTRUCTION

SHEET OF
01 OF 03

COMPUTER FILE NAME
09-0107-23_CALL

CITY DRAWING NUMBER
P-3320-01

CENTENNIAL ST. TO BEAVERBROOK ST.
 STA. 0+91.3 TO STA. 1+88.8