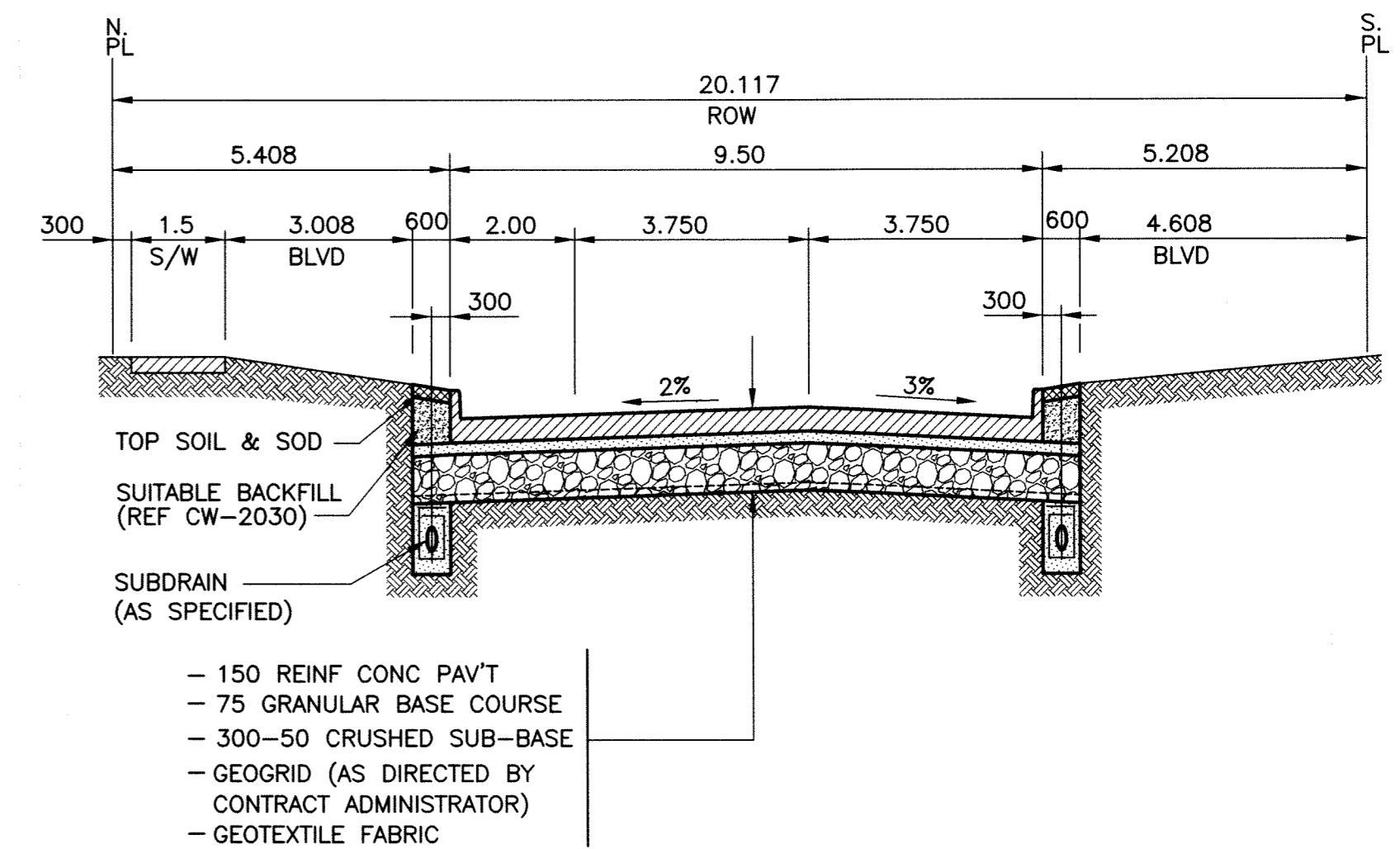


**PAVEMENT PROFILE**

SCALE: 1:250 HOR  
1:10 VER

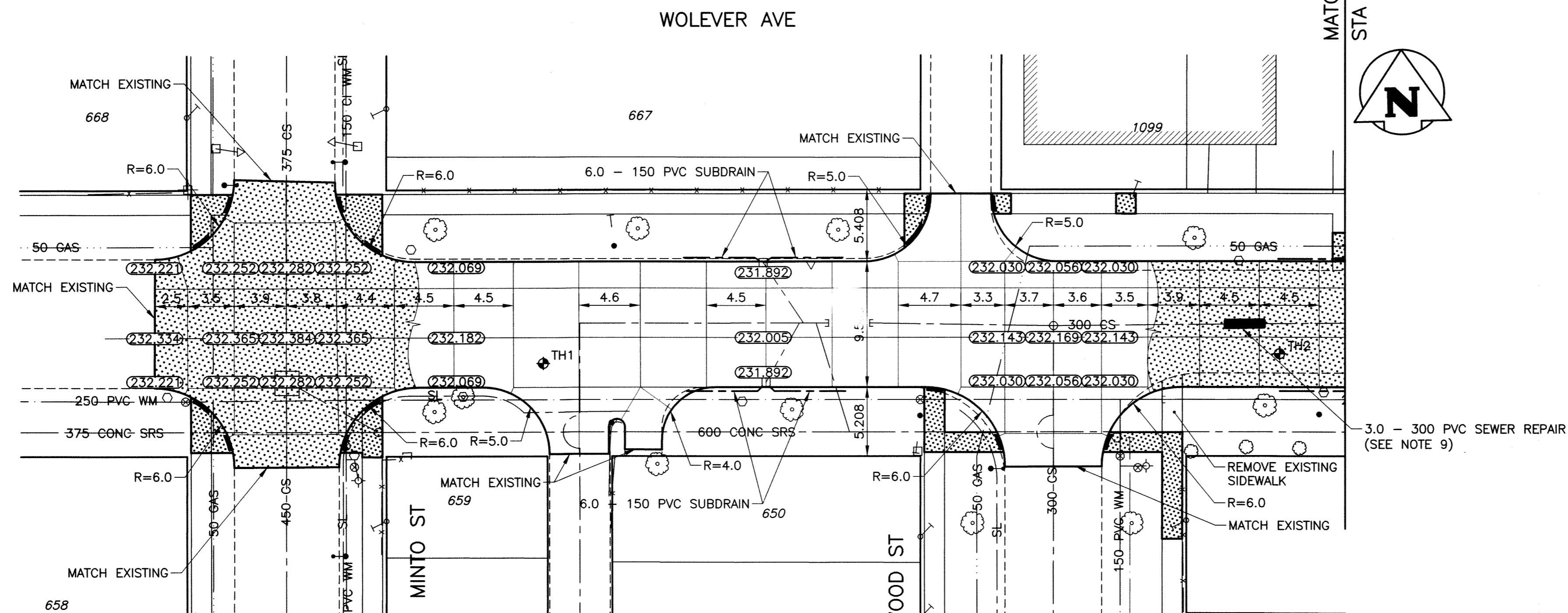


**TYPICAL CROSS SECTION**

SCALE: HOR 1:100  
VER 1:40

**NOTE:**

1. STATION CHAINAGE IS BASED ON CENTERLINE OF ALLEY RIGHT OF WAY.
2. ADJUST MH AND CB RIMS TO NEW GRADES.
3. PLUG SUBDRAINS AT TERMINAL ENDS.
4. REGRADE EXISTING PRIVATE SIDEWALKS AS REQUIRED.
5. INSTALLATION OF LIP CURBS AND THEIR EXTENTS TO BE DETERMINED BY THE CONTRACT ADMINISTRATOR.
6. LIGHT STANDARDS, HYDRO POLES AND ANCHORS MAY REQUIRE TEMPORARY SUPPORT/REMOVAL OR REPLACEMENT AT THE CONTRACTOR'S EXPENSE.
7. ISOLATE ALL POLES, BASES AND PILES WITHIN ALLEY RIGHT OF WAY (SD-228C).
8. AVOID DAMAGE TO EXISTING TREES WITHIN THE LIMITS OF CONSTRUCTION.
9. SEWER REPAIR OF EXISTING 300 VC CS LOCATED FROM STA. 1+78.5 TO 1+81.5 (APPROX. 13 - 16m E OF MH LOCATED AT INTERSECTION OF GREENWOOD ST.) INV. EL. = 228.82±
10. CONTRACTOR TO COORDINATE WITH CITY TO REINSTALL TRAFFIC SIGNS REMOVED DURING CONSTRUCTION.



**PAVEMENT PLAN**

SCALE: 1:250 HOR

**PROPERTY LIMITS DELINEATION**

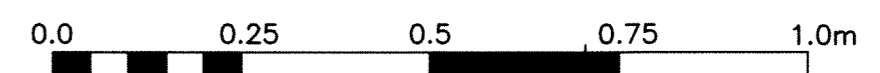
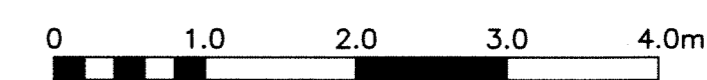
DELINEATION OF PROPERTY LIMITS AS SHOWN ON THIS DWG DOES NOT REPRESENT A "LEGAL SURVEY". KGS GROUP MAKES NO REPRESENTATION OR WARRANTY AS TO THE ACCURACY OF PROPERTY LIMITS DELINEATED ON THIS DWG, NOR ON THE DIMENSIONAL ACCURACY OF DWG FEATURES RELATIVE TO THOSE PROPERTY LIMITS.

**WARNING**

1. NOTIFY THE GAS COMPANY OF THE PROPOSED LOCATION OF EXCAVATION.
2. TAKE PRECAUTION TO AVOID DAMAGE TO GAS COMPANY INSTALLATIONS.
3. SEE PROVINCIAL REGULATION 210/72 FOR DETAILS.

**METRIC**

WHOLE NUMBERS INDICATE MILLIMETRES  
DECIMALIZED NUMBERS INDICATE METRES



Certificate of Authorization

KGS Group

No. 245 Date: 2010/02

EXISTING	LEGEND-PLAN	PROPOSED	EXISTING	LEGEND-PLAN	PROPOSED	EXISTING	LEGEND-PROFILE	PROPOSED
300 LDS	LAND DRAINAGE SEWER	300 LDS	⊕	TEST HOLE	⊕	---	GUY WIRE	---
250 WWS	WASTE WATER SEWER	250 WWS	⊖	LIGHT STANDARD	⊖	---	BACK OF CURB	---
---	GAS	---	---	CONCRETE	---	---	SIDEWALK	---
---	M.T.S.	---	---	ASPHALT	---	---	RAMP CURB	---
150 WM	WATERMAIN	150 WM	---	PROPERTY LINE	---	---	SURVEY BAR	---
⊕	HYDRANT	⊕	---	GEODETIC BENCHMARK	---	---	ELEVATION	---
⊖	VALVE	⊖	---	---	---	---	---	---
○	MANHOLE	○	---	---	---	---	---	---
□	CATCH BASIN	□	---	---	---	---	---	---
▽	CURB INLET	▽	---	---	---	---	---	---
•	POLES T-MTS H-HYDRO	•	---	---	---	---	---	---

**LOCATION APPROVED UNDERGROUND STRUCTURES**

SUPV. U/G STRUCTURES DATE COMMITTEE  
NOTE: LOCATION OF UNDERGROUND STRUCTURES AS SHOWN ARE BASED ON THE BEST INFORMATION AVAILABLE BUT NO GUARANTEE IS GIVEN THAT ALL EXISTING UTILITIES ARE SHOWN OR THAT THE GIVEN LOCATIONS ARE EXACT. COOPERATION OF EXISTENCE AND EXACT LOCATION OF ALL SERVICES MUST BE OBTAINED FROM THE INDIVIDUAL UTILITIES BEFORE PROCEEDING WITH CONSTRUCTION.

B.M. 37-038 ELEV. 232.957	S.W. CORNER WALL ST. & WOLEVER AVE., TELT. IN E. CONCRETE FOUNDATION NO. 660 WALL ST. 12.5m S. & 0.4m BELOW BRICK OF N.E. CORNER OF BUILDING
NO.	REVISIONS
0	ISSUED FOR TENDER
	DATE
	BY

DESIGNED BY	RBO	CHECKED BY	CR
DRAWN BY	GEL	APPROVED BY	RJH
HOR. SCALE:	1:250	RELEASED FOR CONSTRUCTION:	
VERTICAL:	1:50	DATE	10/02/03

ENGINEER'S SEAL  
CONSULTANT DRAWING NO. 09-0107-20\_C15

**THE CITY OF WINNIPEG**  
PUBLIC WORKS DEPARTMENT  
TRANSPORTATION ENGINEERING DIVISION

PROJECT TITLE: 2010 ALLEY & LOCAL STREET RENEWALS  
SHEET OF 15 OF 18

WOLEVER AVENUE  
MINTO STREET TO DOMINION STREET  
MINTO STREET TO STA. 1+87.5

COMPUTER FILE NAME: WOLEVER-PL0T  
CITY DRAWING NUMBER: 0015

P:\Projects\2008\09-0107-20\Dec Control\Tobekawet\DWG\09-0107-20\_0015-REV 0.dwg - Tab: 15 Plotted By: Dberche 04/20/2010 [1m 3.39mm]