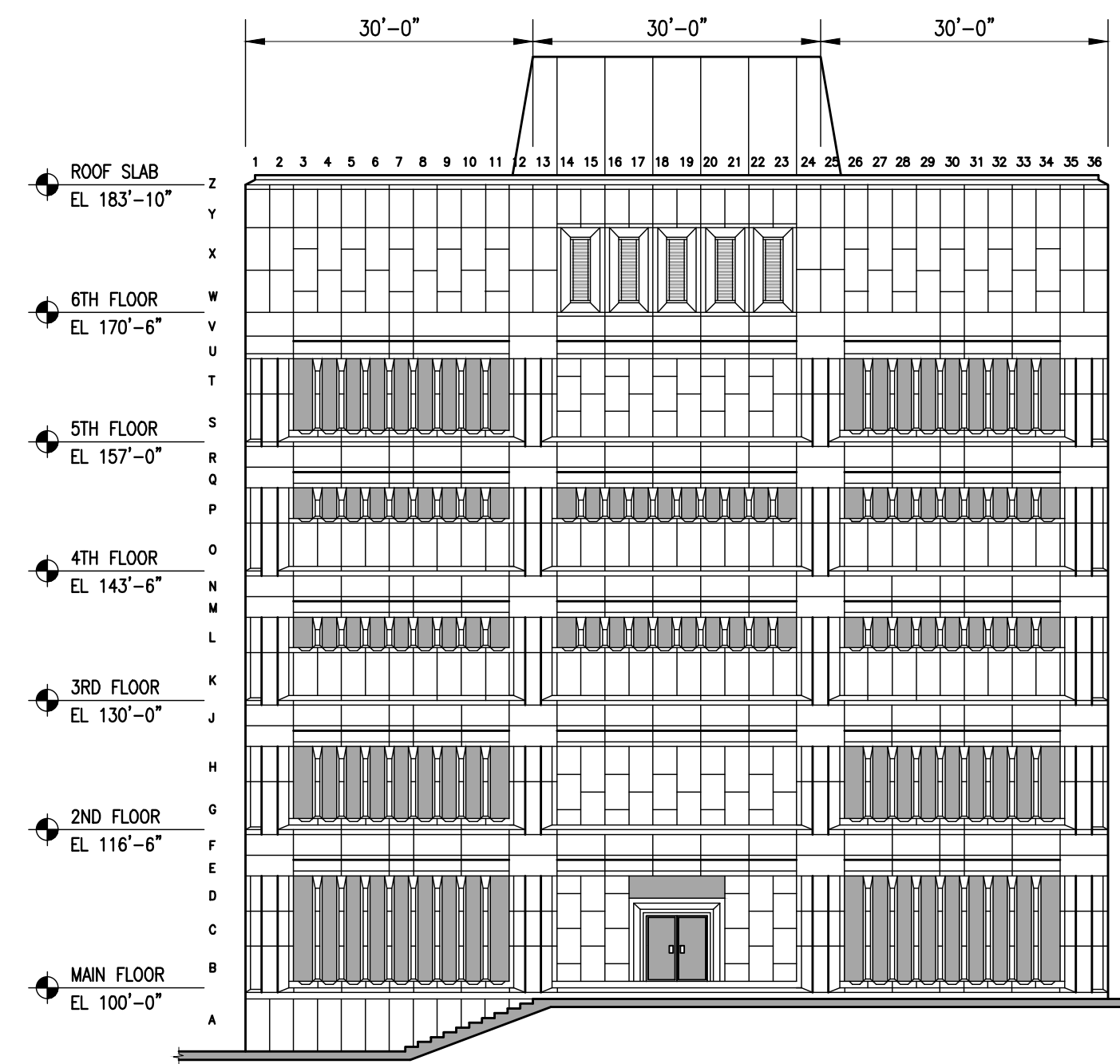


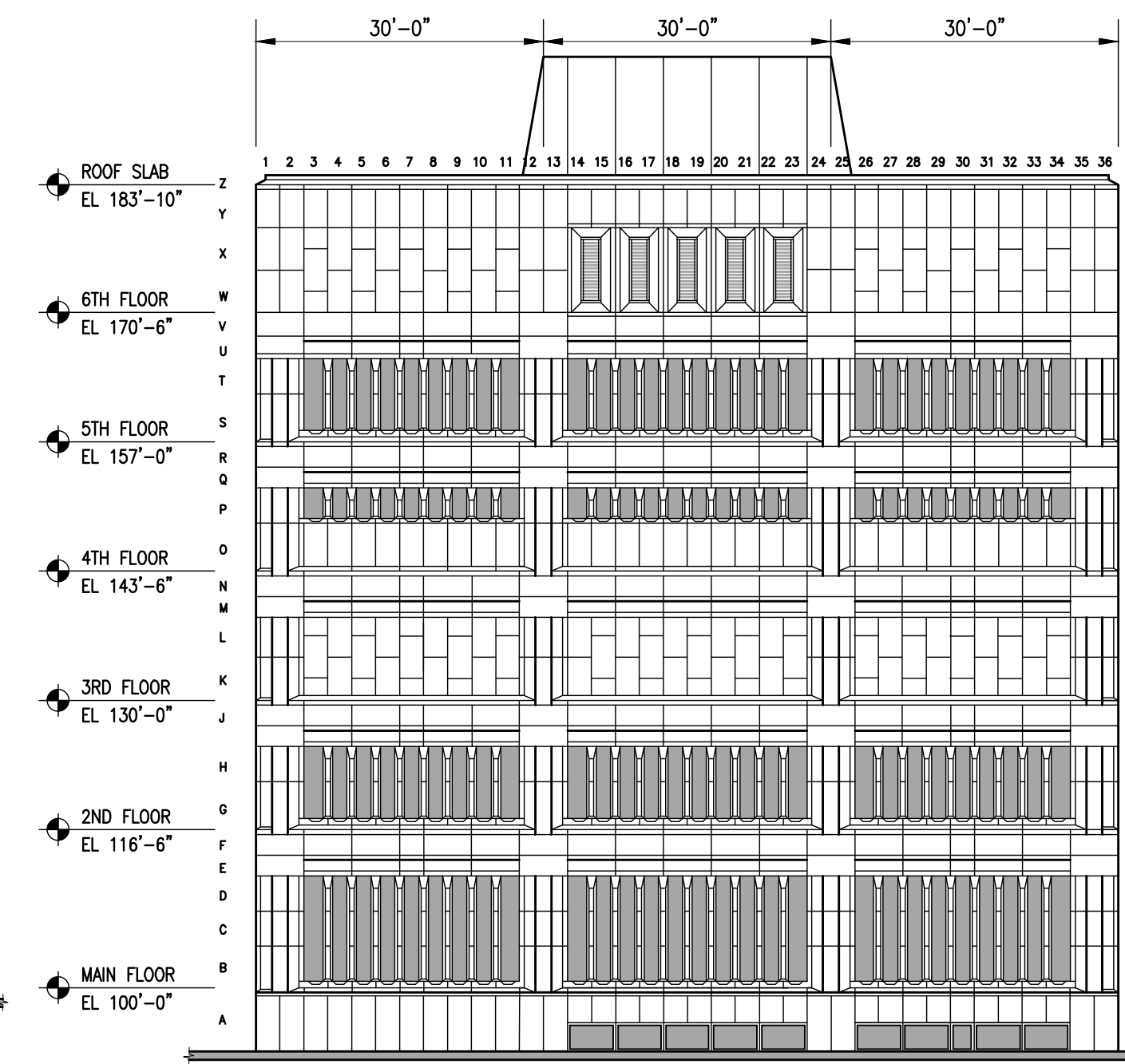
PUBLIC SAFETY BUILDING

BUILDING PLAN
1/16" = 1'-0"



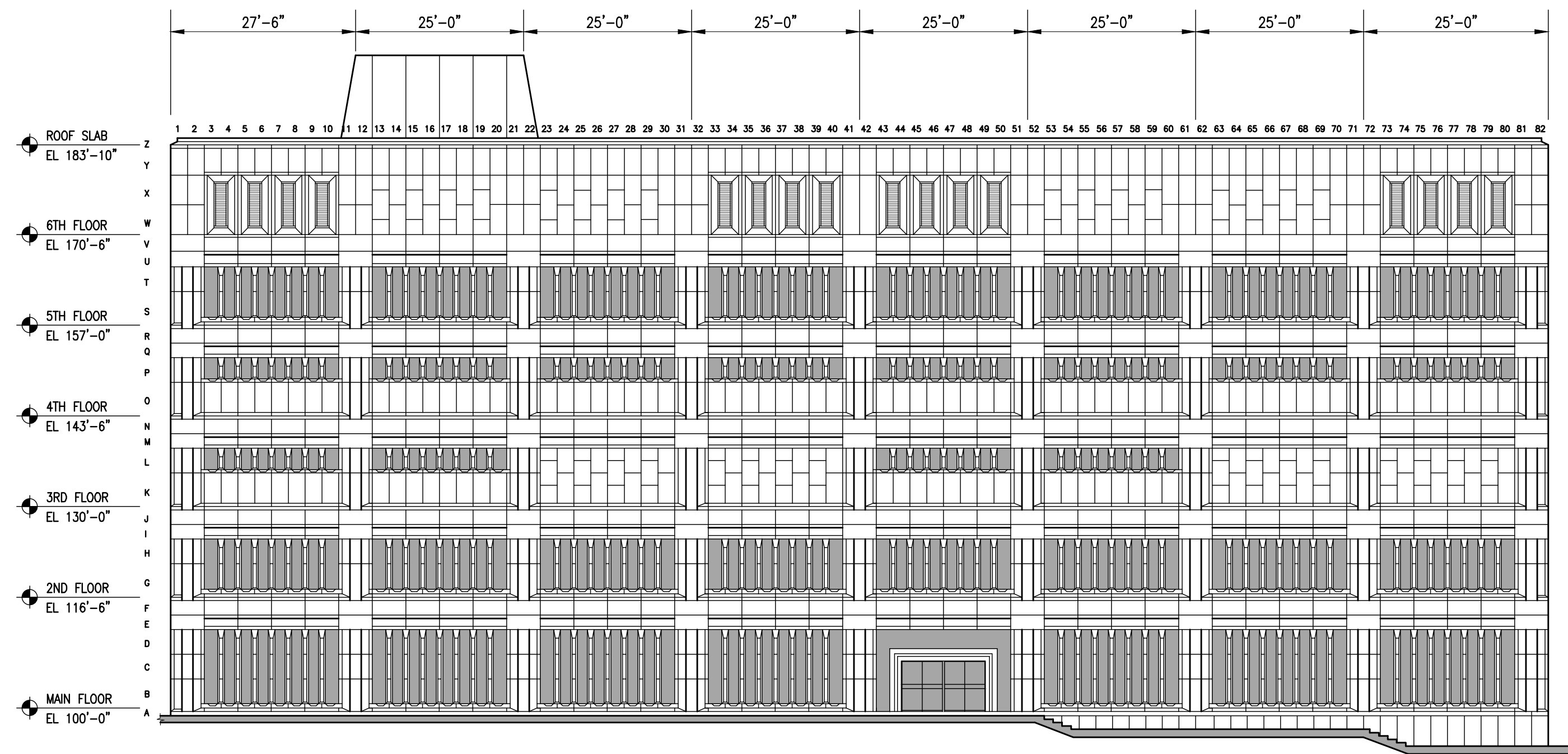
NORTH ELEVATION

1/16" = 1'-0"



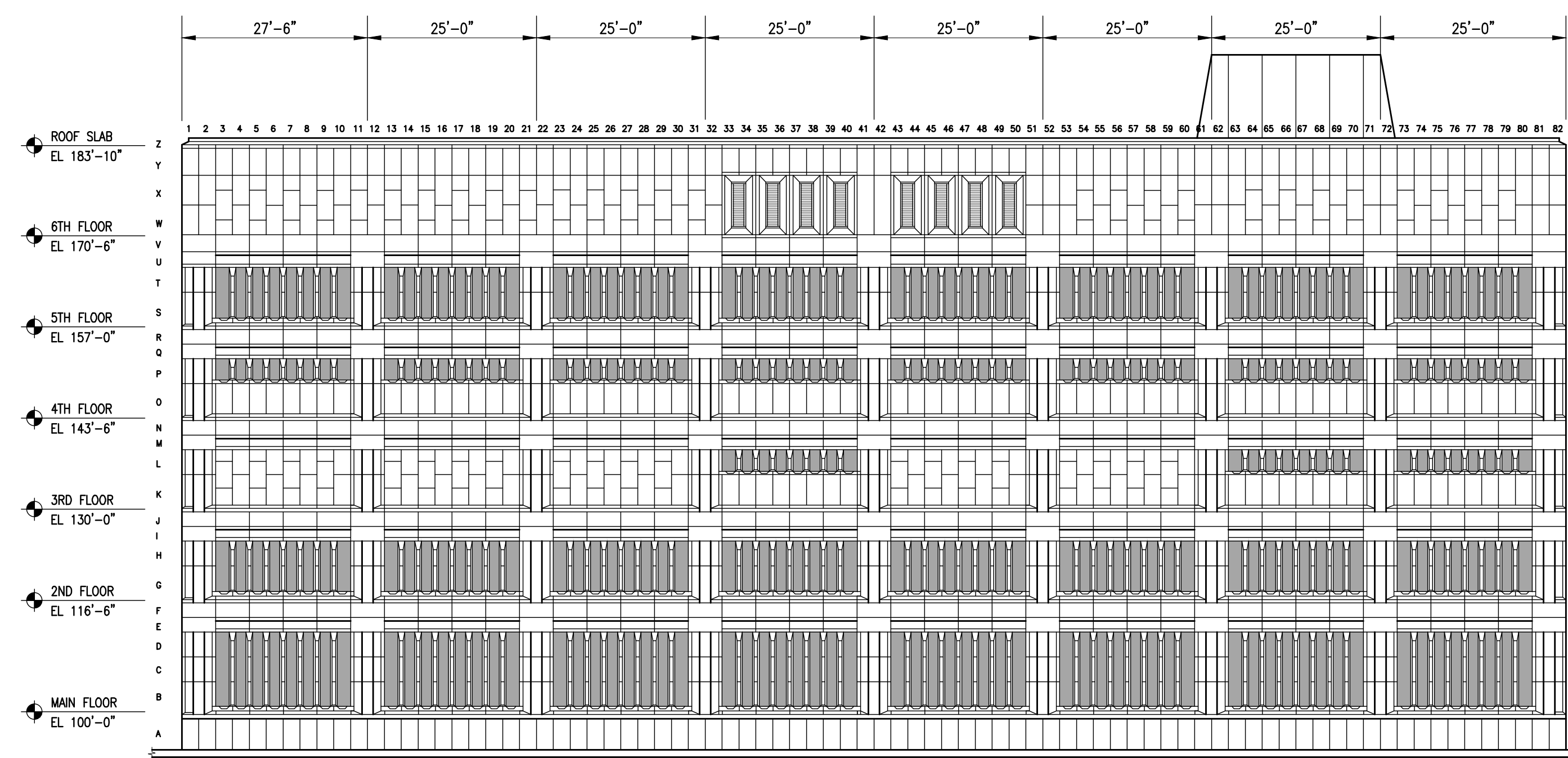
SOUTH ELEVATION

1/16" = 1'-0"



WEST ELEVATION

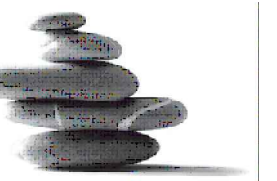
1/16" = 1'-0"



EAST ELEVATION

1/16" = 1'-0"

300-275 Carlton Street
Winnipeg, Manitoba R3C 5R6
T 204. 943. 7501
F 204. 943. 7507
2010-0259



Crosier Kilgour & Partners Ltd.
CONSULTING STRUCTURAL ENGINEERS

NO.	REVISION/DESCRIPTION	BY	DATE
1	ISSUED FOR TENDER	MDC	04.06.10

SEALS



DRAWN BY	CHECKED BY	APPROVED
CL	USER APPROVAL	

CITY OF WINNIPEG
PLANNING, PROPERTY & DEVELOPMENT DEPARTMENT
CIVIC ACCOMMODATIONS DIVISION
300 - 65 GARRY ST. R3C 4K4

APEGM
Certificate of Authorization
Crosier Kilgour & Partners Ltd.
No. 235 Date: Apr 6, 2010

PROJECT
PUBLIC SAFETY BUILDING
151 PRINCESS STREET
2010 CLADDING STABILIZATION
WINNIPEG, MANITOBA

SHEET TITLE
PLAN VIEW & ELEVATIONS

SCALE	PROJECT NO.	SHEET NO.
AS NOTED	2010-0259	SK-1