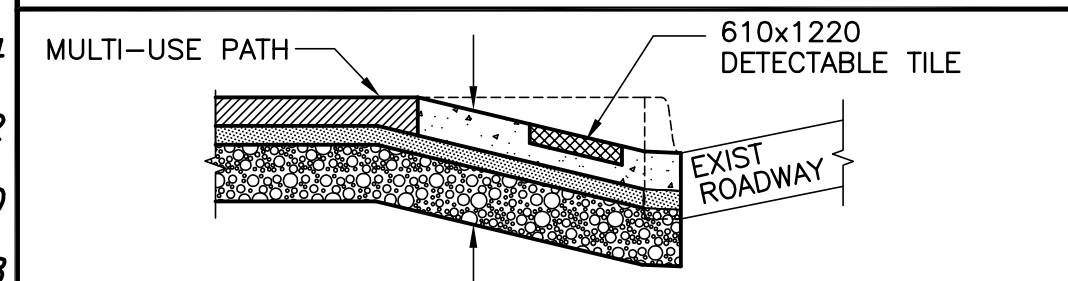
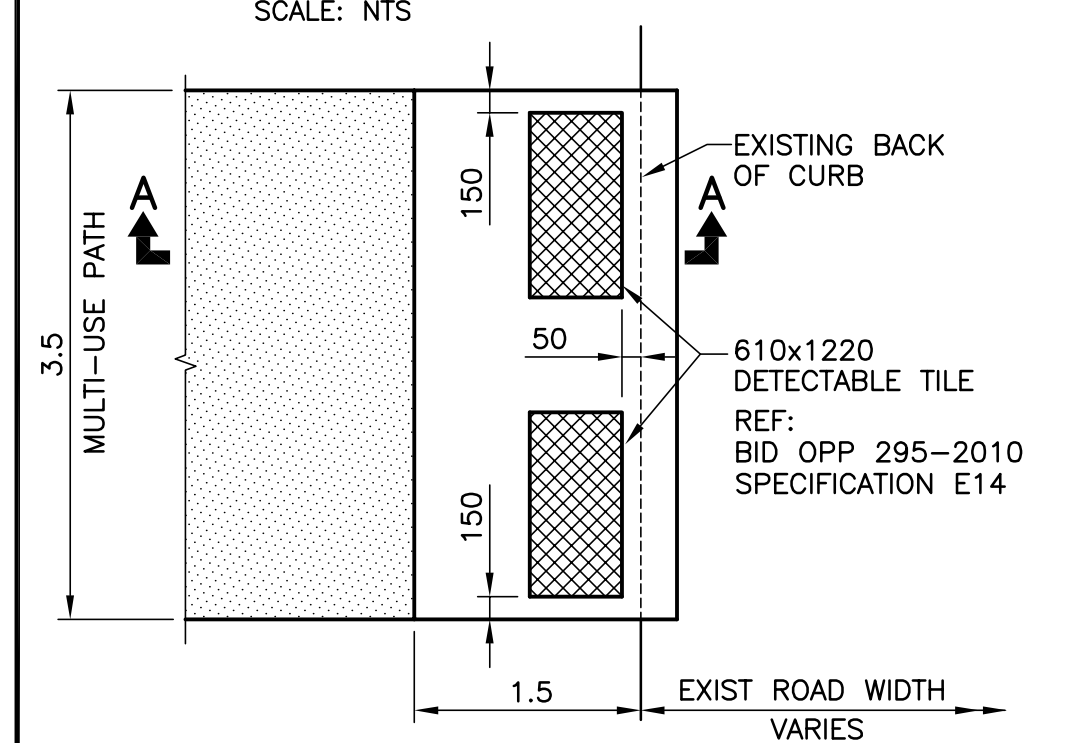


TYPICAL PATH SECTION
SCALE: NTS

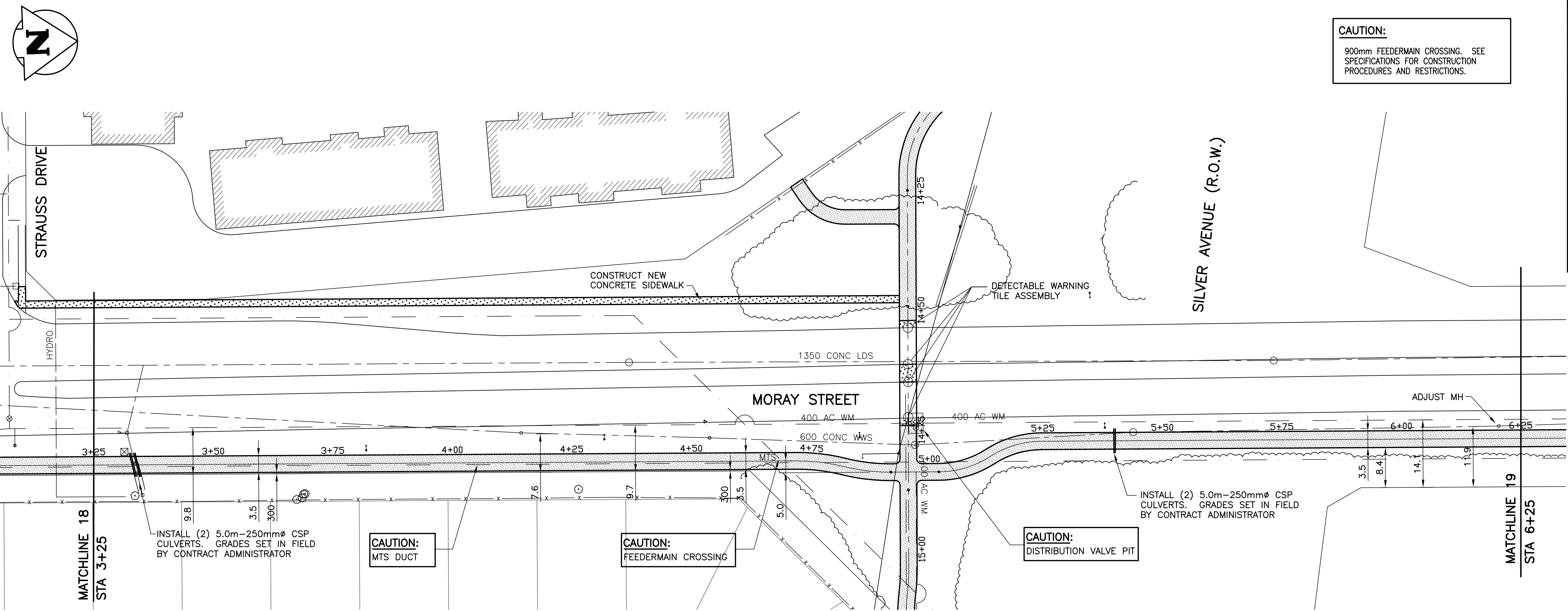


SECTION A-A
SCALE: NTS



DETECTABLE WARNING SURFACE FOR MULTI-USE PATHS
SCALE: NTS

CAUTION:
900mm FEEDERMAIN CROSSING. SEE SPECIFICATIONS FOR CONSTRUCTION PROCEDURES AND RESTRICTIONS.

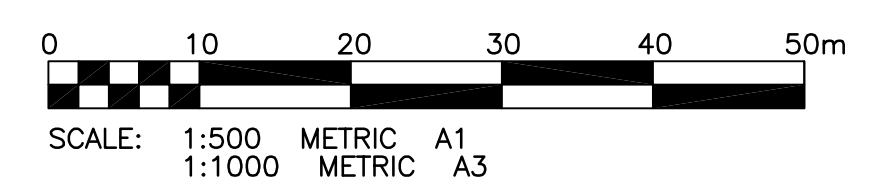


PROPERTY LIMITS DELINEATION
DELINEATION OF PROPERTY LIMITS AS SHOWN ON THIS DWG DOES NOT REPRESENT A "LEGAL SURVEY". KGS GROUP MAKES NO REPRESENTATION OR WARRANTY AS TO THE ACCURACY OF PROPERTY LIMITS DELINEATED ON THIS DWG, NOR ON THE DIMENSIONAL ACCURACY OF DWG FEATURES RELATIVE TO THOSE PROPERTY LIMITS.

NOTE:
CONTRACTOR TO PROVIDE CITY OF WINNIPEG 48 HOURS NOTICE PRIOR TO CROSSING OR WORKING IN VICINITY OF 900mm FEEDERMAIN

METRIC
WHOLE NUMBERS INDICATE MILLIMETRES
DECIMALIZED NUMBERS INDICATE METRES

APEGM
Certificate of Authorization
KGS Group
No. 245 Date: 10/05/03



150 WM	WATERMAIN	150 WM	HYDRO	150 WM	WATERMAIN	150 WM
300 LDS	LAND DRAINAGE SEWER	300 LDS	M.T.S.	300 LDS	HYDRANT, VALVE	300 LDS
250 WWS	WASTE WATER SEWER	250 WWS	CONCRETE ASPHALT SIDEWALK	250 WWS	LAND DRAINAGE SEWER	250 WWS
MANHOLE	MANHOLE	MANHOLE	KGS TEST HOLE	MANHOLE	WASTE WATER SEWER	MANHOLE
CATCH BASIN	CATCH BASIN	CATCH BASIN	PROPERTY LINE	CATCH BASIN	Q. PROFILE	CATCH BASIN
CURB INLET	CURB INLET	CURB INLET	SURVEY BAR	CURB INLET	NORTH/WEST GUTTER	CURB INLET
JUNCTIONS	JUNCTIONS	JUNCTIONS	DITCH	JUNCTIONS	SOUTH/EAST GUTTER	JUNCTIONS
CULVERT	CULVERT	CULVERT	ELEVATION	CULVERT	N/W, S/E P'S	CULVERT
GAS	GAS	GAS	(32.231)	GAS	N/W, S/E TOP/CURB	GAS
EXISTING	LEGEND-PLAN	PROPOSED	EXISTING	LEGEND-PLAN	NORTH/WEST DITCH	PROPOSED
EXISTING	LEGEND-PROFILE	PROPOSED	EXISTING	LEGEND-PROFILE	SOUTH/EAST DITCH	PROPOSED

LOCATION APPROVED UNDERGROUND STRUCTURES
SUPV. U/G STRUCTURES COMMITTEE DATE
NOTE:
LOCATION OF UNDERGROUND STRUCTURES AS SHOWN ARE BASED ON THE BEST INFORMATION AVAILABLE BUT NO GUARANTEE IS GIVEN THAT ALL EXISTING UTILITIES ARE SHOWN OR THAT THE GIVEN LOCATIONS ARE EXACT. CONFIRMATION OF EXISTENCE AND EXACT LOCATION OF ALL SERVICES MUST BE OBTAINED FROM THE INDIVIDUAL UTILITIES BEFORE PROCEEDING WITH CONSTRUCTION.

B.M. 39-032	S.W. Cor. Moray St. & Silver Ave., Tbit. in N. Conc. foundation No. 65 Moray Village, 3m W. & 0.1m below brick of N.E. Cor. of apartment unit.		
ELEV. 238.871m			
NO.	REVISIONS	DATE	BY
0	ISSUED FOR TENDER	10/05/03	

KGS GROUP CONSULTING ENGINEERS
SCATLIFF+MILLER+MURRAY INC.
DESIGNED BY: CR
DRAWN BY: DMW
HOR. SCALE: 1:500
VERTICAL: 1:50
CHECKED BY:
APPROVED BY:
RELEASED FOR CONSTRUCTION:
DATE: 09/12/16

ENGINEER'S SEAL
PROVINCE OF MANITOBA
M.C. ROWBOTHAM
Member 22679
REGISTERED PROFESSIONAL ENGINEER

THE CITY OF WINNIPEG PUBLIC WORKS DEPARTMENT
PROJECT TITLE: 2010 ACTIVE TRANSPORTATION / INFRASTRUCTURE STIMULUS PROGRAM
MORAY ST. - NESS AVE. TO MURRAY PARK RD. STA. 3+25 TO STA. 6+25
SHEET 20 OF 35
COMPUTER FILE NAME: 09-0107-21
CITY DRAWING NUMBER: 20

P:\Projects\2009\09-0107-21\DWG\Winn\AT\dwg\WUP-PL01.dwg - Tab: 20 Plotted By: Gloewen 04/30/2010 [Fri 8:58am]