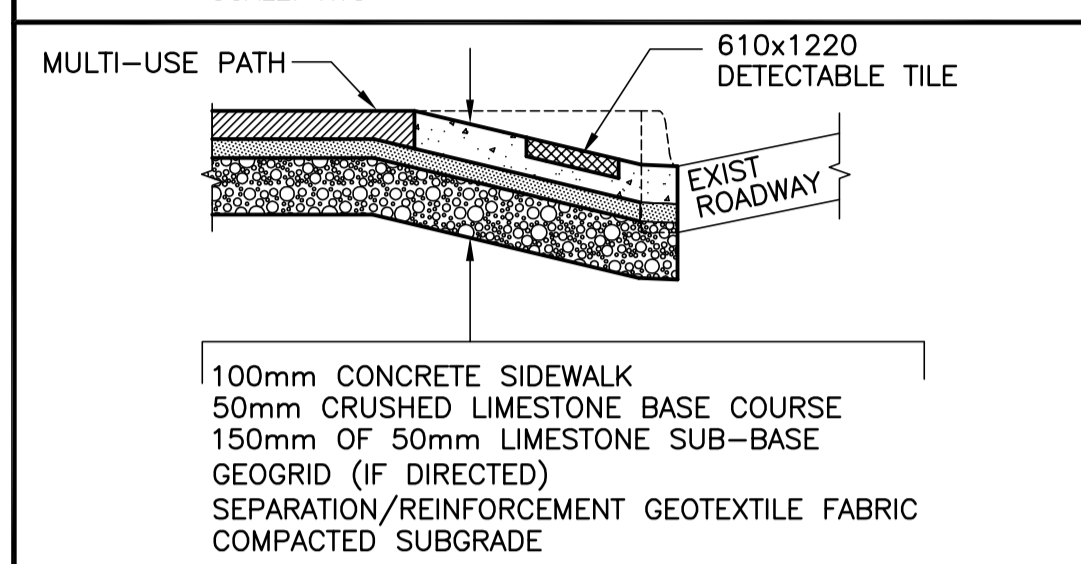
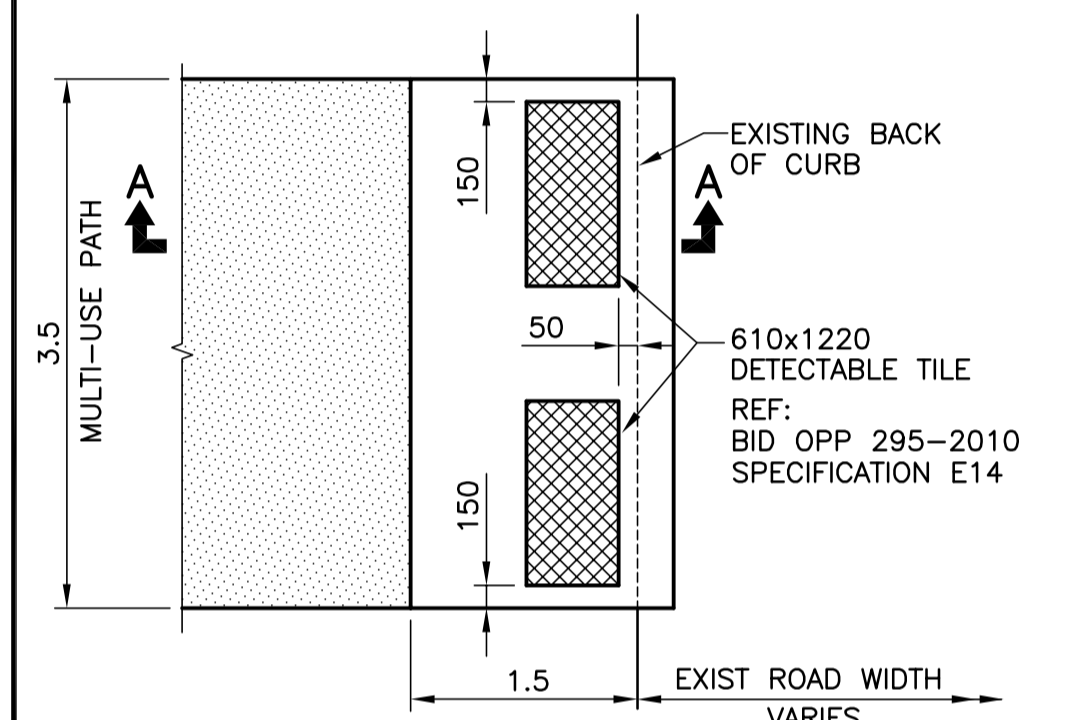


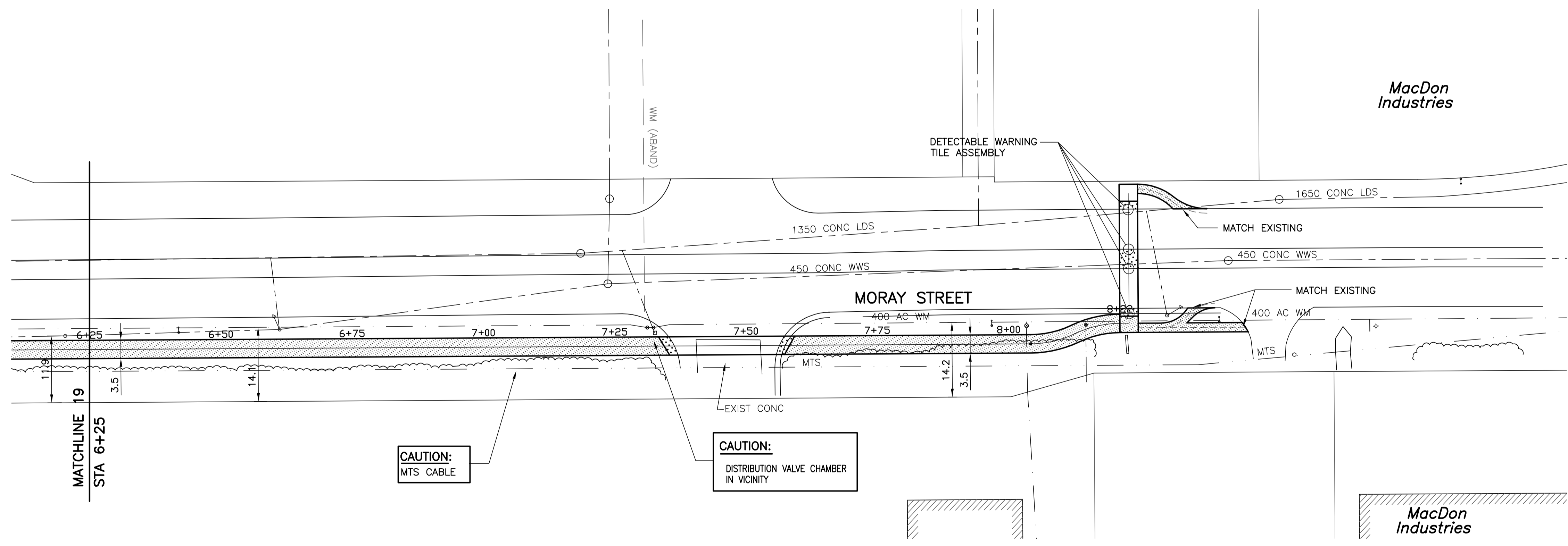
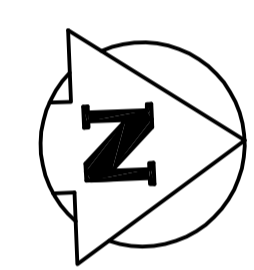
**TYPICAL PATH SECTION**  
SCALE: NTS



**SECTION A-A**  
SCALE: NTS



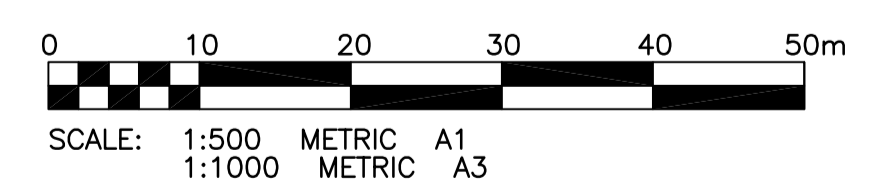
**DETECTABLE WARNING SURFACE FOR MULTI-USE PATHS**  
SCALE: NTS



**PROPERTY LIMITS DELINEATION**  
DELINEATION OF PROPERTY LIMITS AS SHOWN ON THIS DWG DOES NOT REPRESENT A "LEGAL SURVEY". KGS GROUP MAKES NO REPRESENTATION OR WARRANTY AS TO THE ACCURACY OF PROPERTY LIMITS DELINEATED ON THIS DWG, NOR ON THE DIMENSIONAL ACCURACY OF DWG FEATURES RELATIVE TO THOSE PROPERTY LIMITS.

**METRIC**  
WHOLE NUMBERS INDICATE MILLIMETRES  
DECIMALIZED NUMBERS INDICATE METRES

**APEGM**  
Certificate of Authorization  
KGS Group  
No. 245 Date: 10/05/03



150 WM	WATERMAIN	150 WM	HYDRO	150 WM	WATERMAIN
Hydrant	HYDRANT	Hydrant	M.T.S.	Hydrant, Valve	HYDRANT, VALVE
Valve	VALVE	Valve	CONCRETE	CONCRETE	CONCRETE
300 LDS	LAND DRAINAGE SEWER	300 LDS	ASPHALT	ASPHALT	ASPHALT
250 WWS	WASTE WATER SEWER	250 WWS	SIDEWALK	SIDEWALK	SIDEWALK
Manhole	MANHOLE	Manhole	KGS TEST HOLE	KGS TEST HOLE	KGS TEST HOLE
Catch Basin	CATCH BASIN	Catch Basin	PROPERTY LINE	PROPERTY LINE	PROPERTY LINE
Curb Inlet	CURB INLET	Curb Inlet	SURVEY BAR	SURVEY BAR	SURVEY BAR
Junctions	JUNCTIONS	Junctions	DITCH	DITCH	DITCH
Culvert	CULVERT	Culvert	ELEVATION	ELEVATION	ELEVATION
Gas	GAS	Gas			
EXISTING	LEGEND-PLAN	PROPOSED	EXISTING	LEGEND-PLAN	PROPOSED

**LOCATION APPROVED UNDERGROUND STRUCTURES**  
SUPV. U/G STRUCTURES COMMITTEE DATE  
NOTE:  
LOCATION OF UNDERGROUND STRUCTURES AS SHOWN ARE BASED ON THE BEST INFORMATION AVAILABLE BUT NO GUARANTEE IS GIVEN THAT ALL EXISTING UTILITIES ARE SHOWN OR THAT THE GIVEN LOCATIONS ARE EXACT. CONFIRMATION OF EXISTENCE AND EXACT LOCATION OF ALL SERVICES MUST BE OBTAINED FROM THE INDIVIDUAL UTILITIES BEFORE PROCEEDING WITH CONSTRUCTION.

B.M. 39-032	S.W. Cor. Moray St. & Silver Ave., Tbit. in N. Conc. foundation No. 65 Moray Village, 3m W. & 0.1m below brick of N.E. Cor. of apartment unit.
ELEV. 238.871m	
NO.	REVISIONS
	DATE
	BY

**KGS GROUP CONSULTING ENGINEERS**  
SCATLIFF + MILLER + MURRAY Inc.  
DESIGNED BY: CR  
DRAWN BY: DMW  
HOR. SCALE: 1:500  
VERTICAL: 1:50  
ISSUED FOR TENDER: 10/05/03  
DATE: 09/12/16

ENGINEER'S SEAL  
PROVINCE OF MANITOBA  
M.C. ROWBOTHAM  
Member 22679  
CONSULTANT DRAWING NO. 09-0107-21\_C21

**THE CITY OF WINNIPEG PUBLIC WORKS DEPARTMENT**  
PROJECT TITLE: 2010 ACTIVE TRANSPORTATION / INFRASTRUCTURE STIMULUS PROGRAM  
MORAY ST. - NESS AVE. TO MURRAY PARK RD. STA. 6+25 TO STA. 8+21  
SHEET 21 OF 35  
COMPUTER FILE NAME: 09-0107-21  
CITY DRAWING NUMBER: 21

F:\Projects\2009\09-0107-21\DWG\Winn\MT.dwg\WUP-PL01.dwg - Tab: 21 Plotted By: Gloenen 04/30/2010 [Fri 8:59am] COWLEGGEND