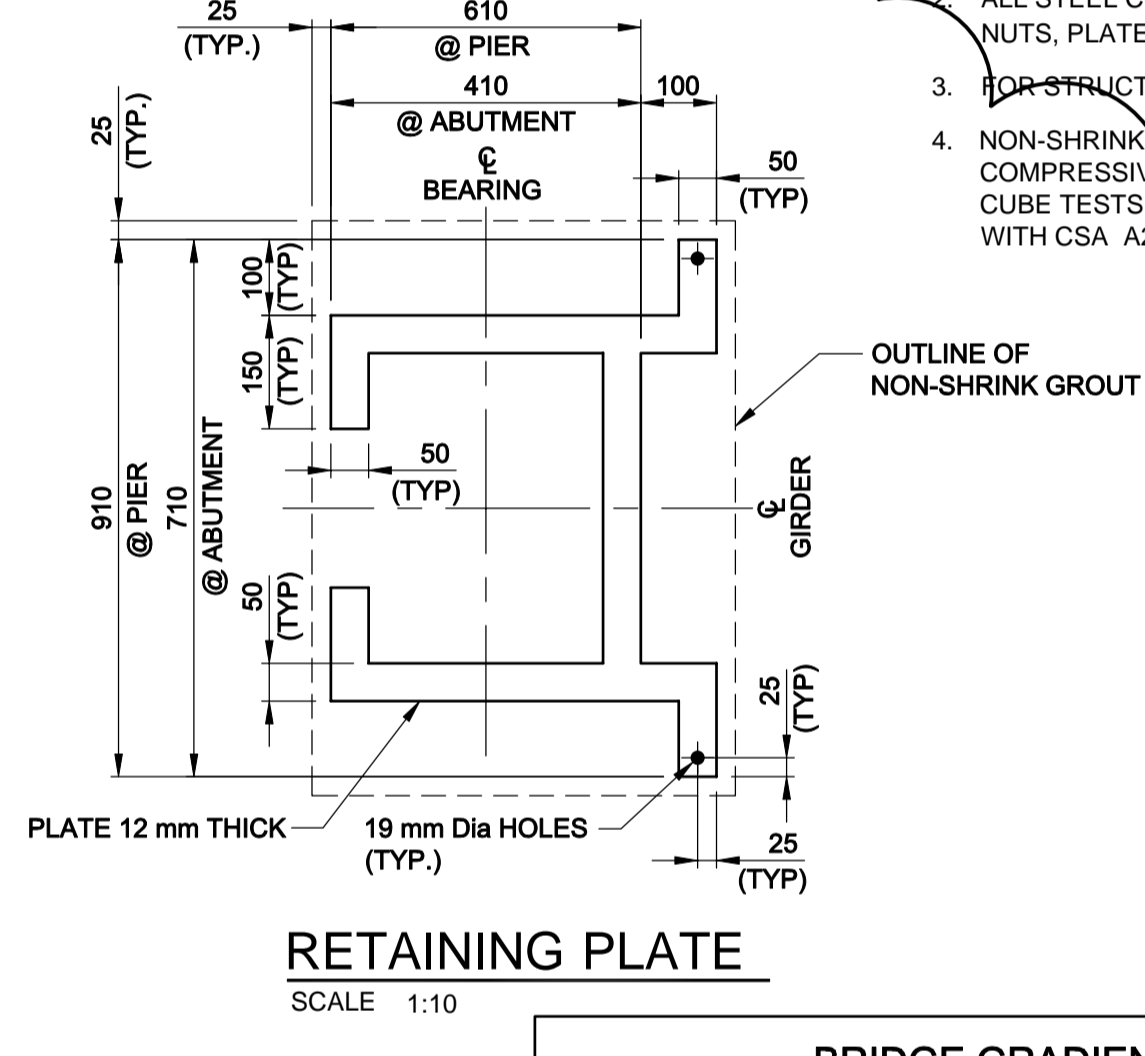
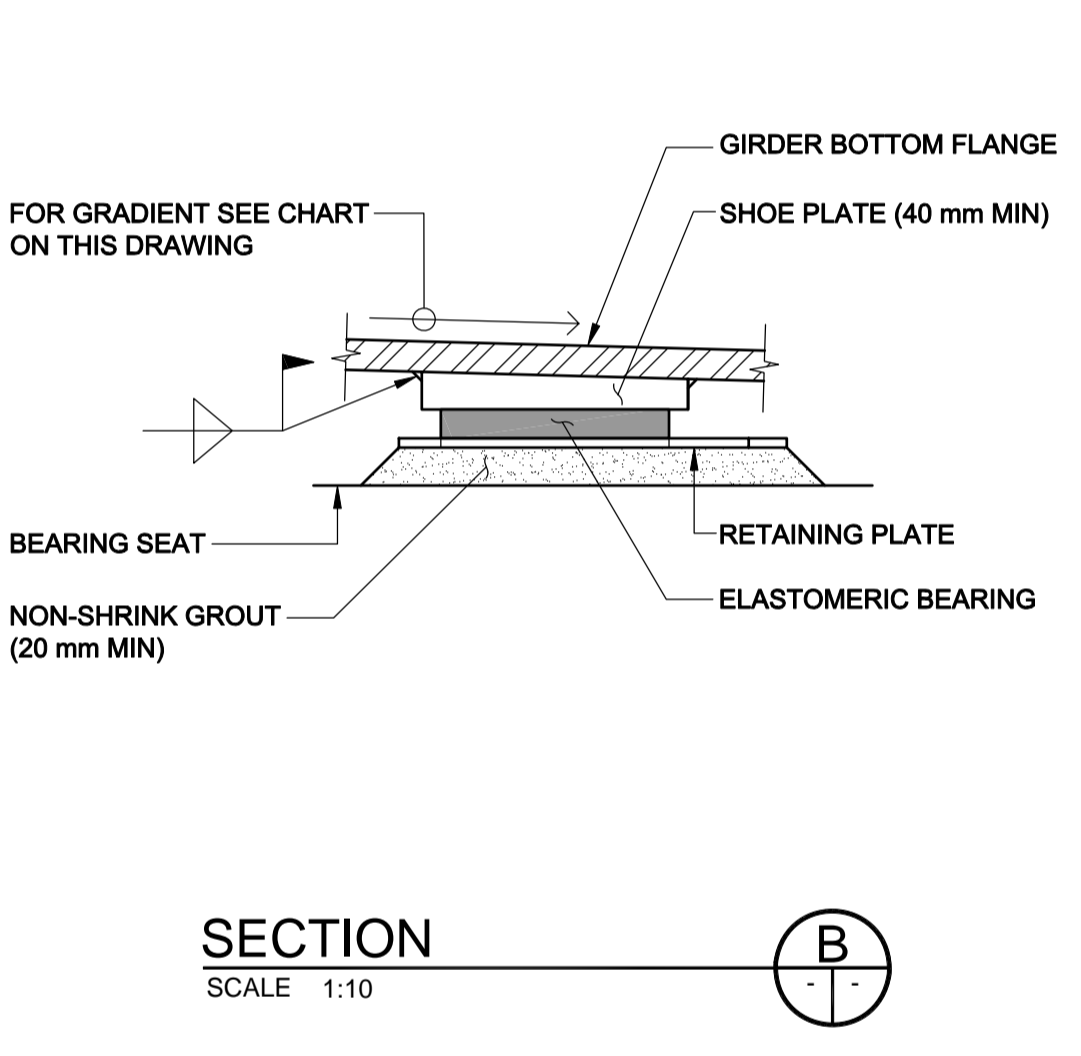
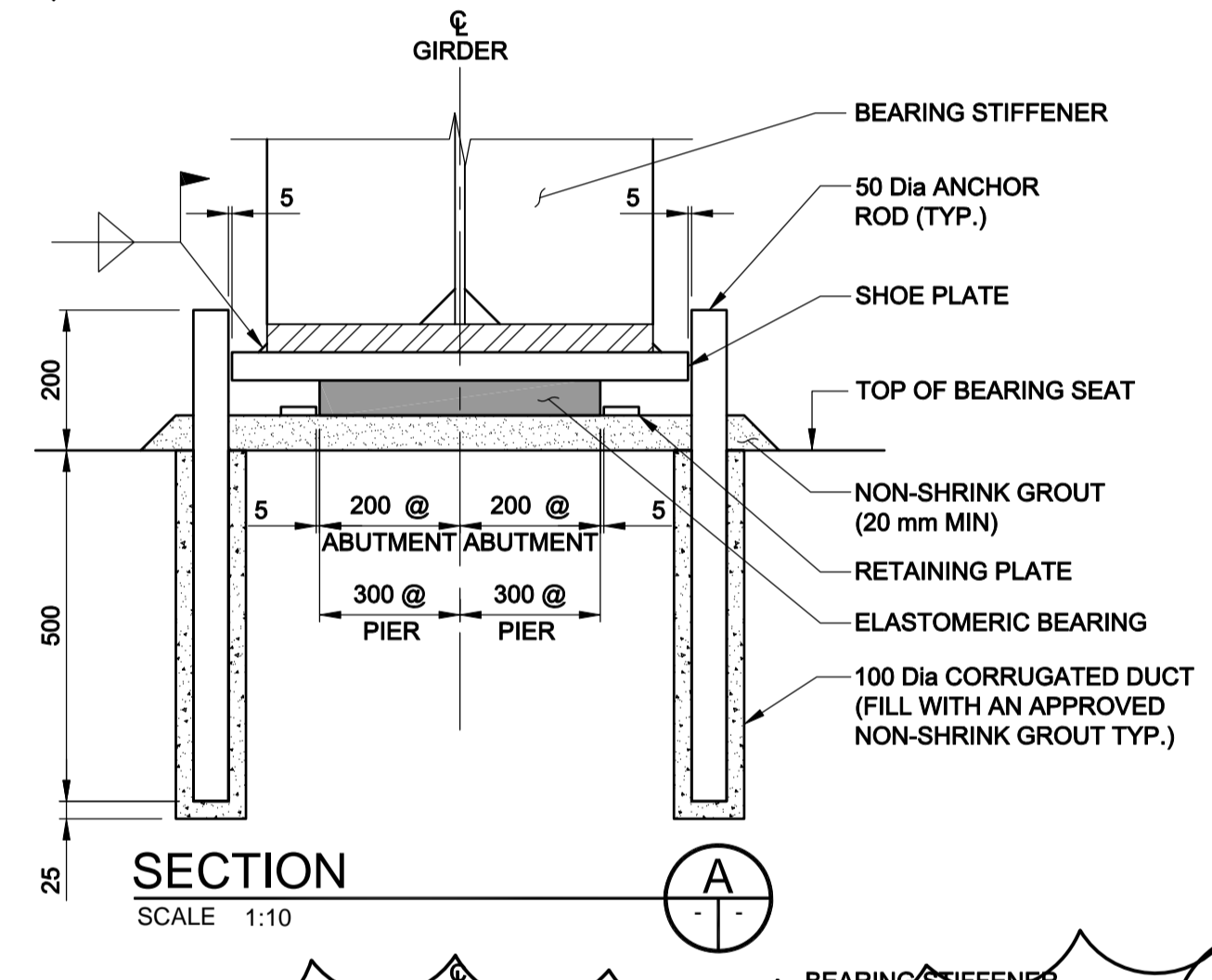
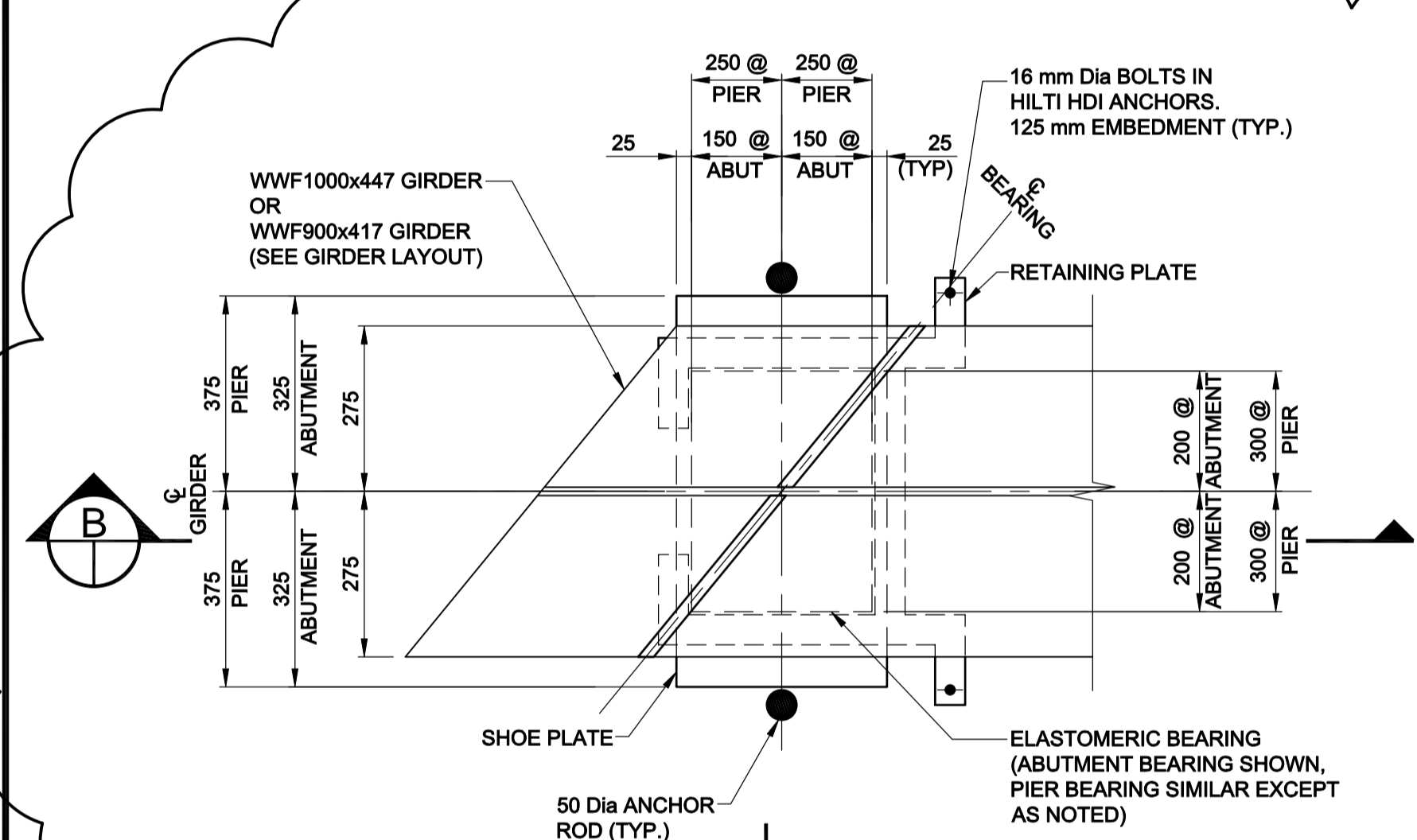
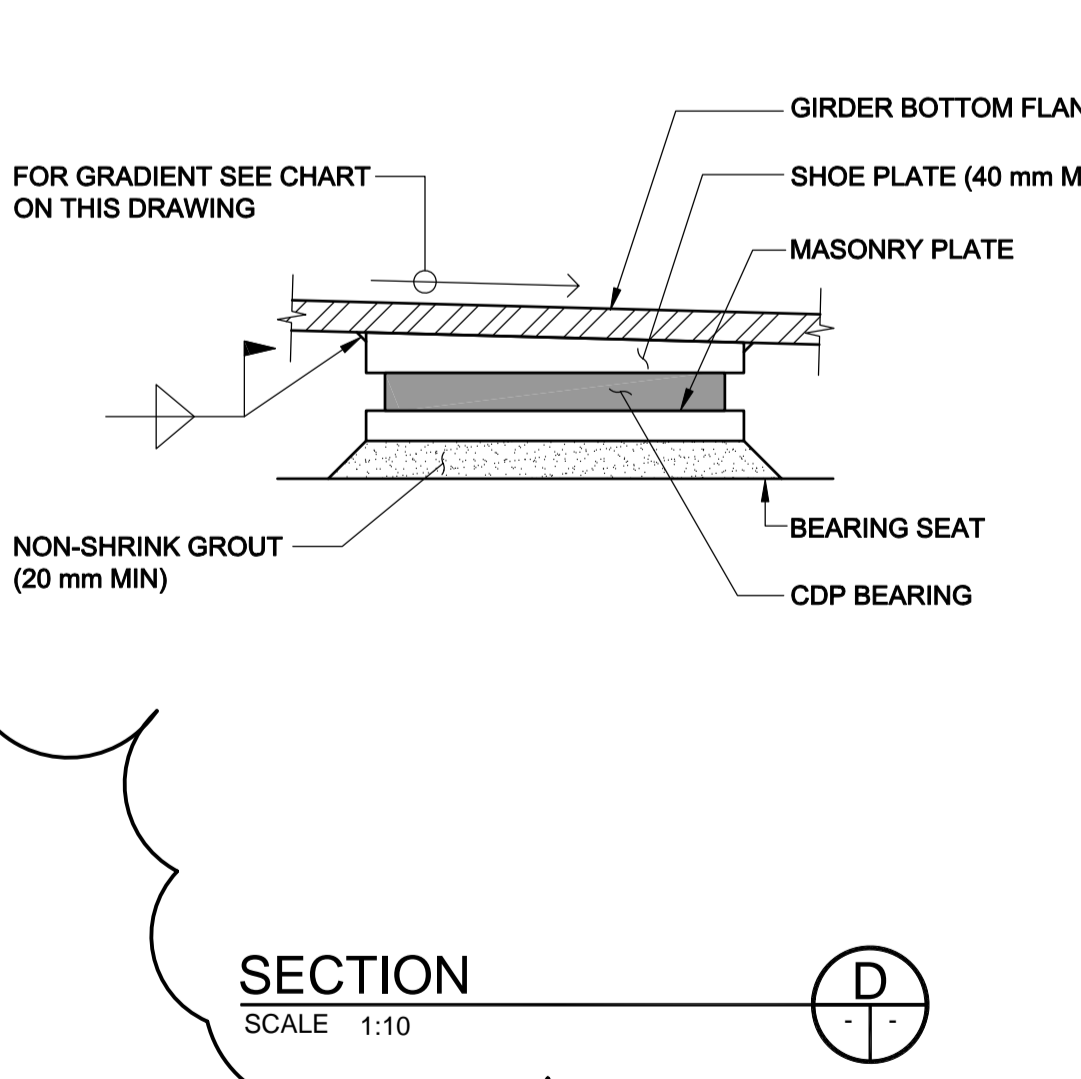
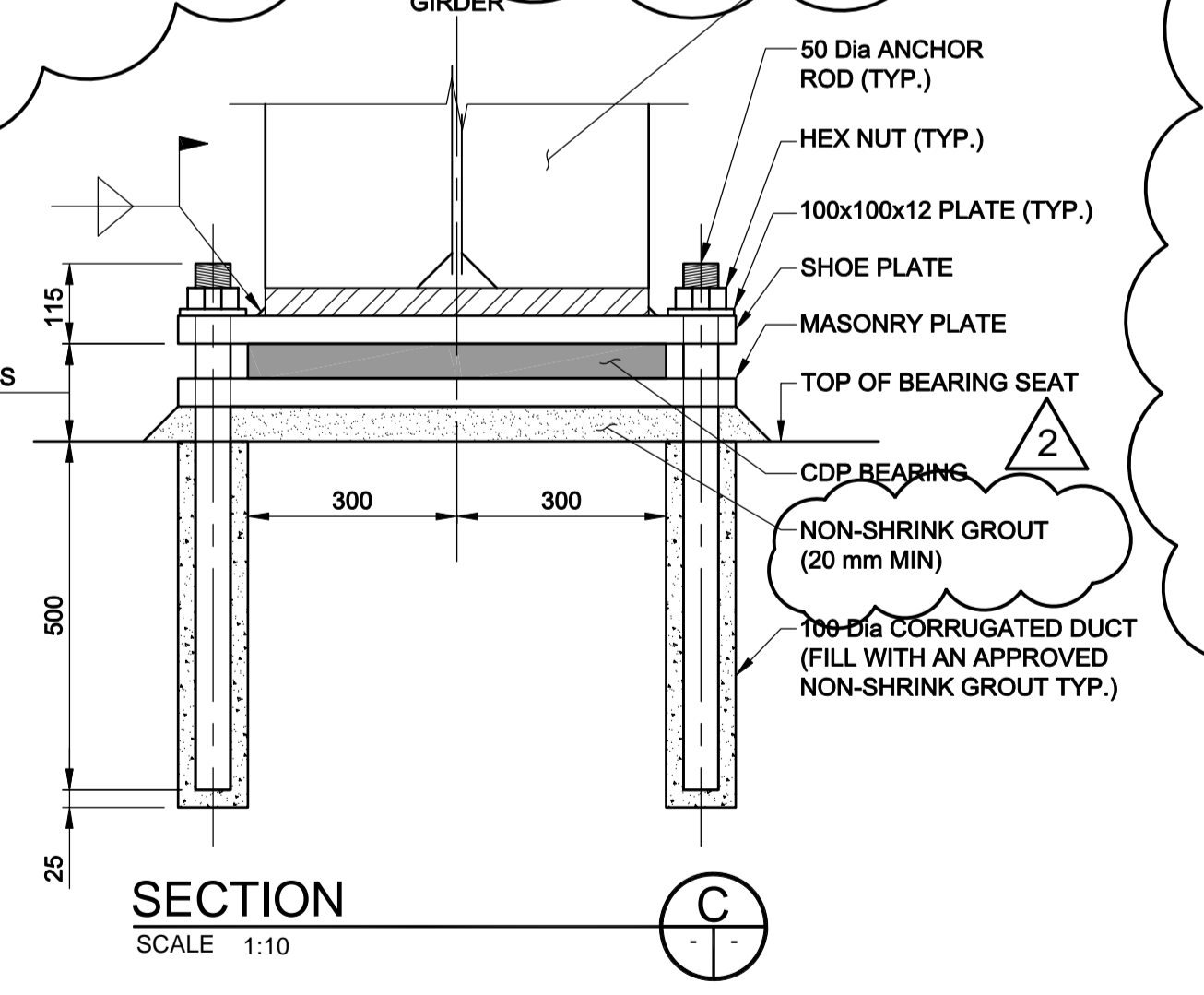
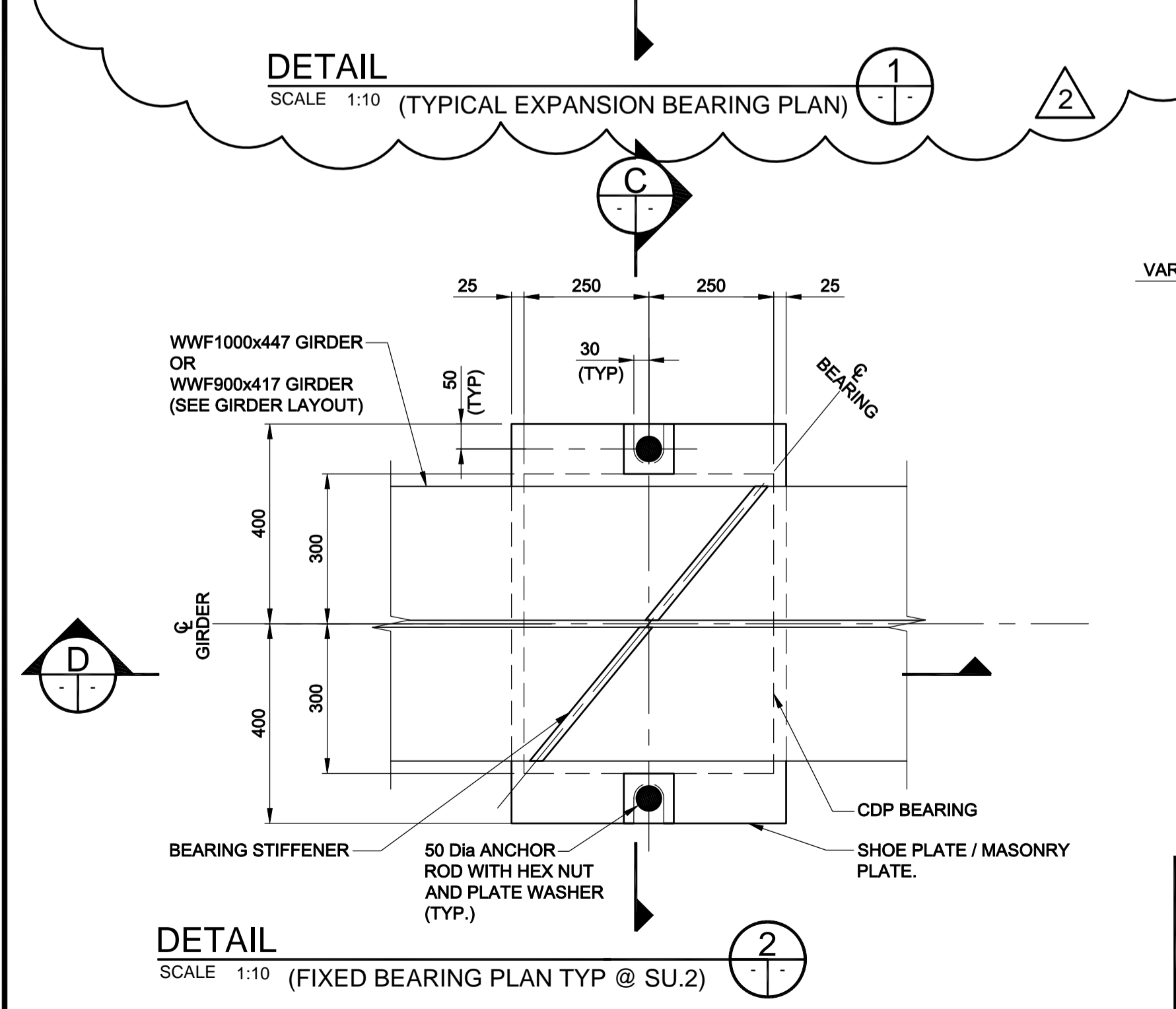


- NOTES:**
1. ALL ANCHOR RODS SHALL BE GRADE 300WT
 2. ALL STEEL COMPONENTS INCLUDING ANCHOR BOLTS, NUTS, PLATES ETC, SHALL BE HOT-DIP GALVANIZED.
 3. FOR STRUCTURAL STEEL NOTES, REFER TO SHEET # 31
 4. NON-SHRINK GROUT SHALL HAVE A MINIMUM COMPRESSIVE STRENGTH OF 50 MPa AT 28 DAYS. CUBE TESTS SHALL BE CONDUCTED IN ACCORDANCE WITH CSA A23.2-1B TO CONFIRM THE STRENGTH.



BRIDGE GRADIENT SUMMARY				
SU.1	SU.2	SU.3	SU.4	
3.39%	2.68%	0.20%	-0.73%	

NOTE: GRADIENT IS SLOPING FROM WEST TO EAST



LOCATION TYPE	REQUIREMENTS			
	SU.1	SU.2	SU.3	SU.4
SLS PERMANENT LOAD (kN)	480	930	1040	240
SLS TOTAL LOAD (kN)	640	1200	1130	550
ULS PERMANENT LOAD (kN)	580	1080	1200	290
ULS TOTAL LOAD (kN)	840	1540	1350	810
MOVEMENT (mm)	± 11	-	± 25	± 34
MAXIMUM SHEAR RATE (kN/mm)	3.60	-	3.57	1.25
BEARING SIZE	400x300x50	600x500x40	600x500x90	400x300x110
STEEL SHOE PLATE SIZE	650x350	800x550	750x550	650x350
MASONRY PLATE SIZE	-	800x550x40	-	-
NUMBER REQUIRED	9	15	15	15
SHORE A HARDNESS (DUROMETER)	60 ± 5	90 ± 5	60 ± 5	60 ± 5
BEARING TYPE	LAMINATED ELASTOMERIC	COTTON DUCT (CDP)	LAMINATED ELASTOMERIC	LAMINATED ELASTOMERIC

LOCATION UNDERGROUND APPROVED STRUCTURES
 SUPV. U/G STRUCTURES COMMITTEE DATE
 NOTE: LOCATION OF UNDERGROUND STRUCTURES AS SHOWN ARE BASED ON THE BEST INFORMATION AVAILABLE BUT NO GUARANTEE IS GIVEN THAT ALL EXISTING UTILITIES ARE SHOWN OR THAT THE GIVEN LOCATIONS ARE EXACT. CONFIRMATION OF EXISTENCE AND EXACT LOCATION OF ALL SERVICES MUST BE OBTAINED FROM THE INDIVIDUAL UTILITIES BEFORE PROCEEDING WITH CONSTRUCTION.

NO.	REVISIONS	DATE	BY
2	ISSUED FOR ADDENDUM #2	10/06/11	DPK
1	ISSUED FOR TENDER	10/05/14	DPK

DESIGNED BY: DJK
 DRAWN BY: MJB
 CHECKED BY: SSR
 APPROVED BY: DPK
 HOR. SCALE: AS SHOWN
 VERTICAL: AS SHOWN
 DATE: 2010/05/14

DILLON CONSULTING
 RELEASED FOR CONSTRUCTION
 ORIGINAL SIGNED BY RANDY FINGAS
 DATE: 2010/05/14

PROVINCE OF MANITOBA
 ORIGINAL STAMPED BY
 S.S. RIHAL
 2010/05/14
 REGISTERED PROFESSIONAL ENGINEER
 CONSULTANT PROJECT NO. 088813

THE CITY OF WINNIPEG TRANSIT DEPARTMENT
 Winnipeg
 SOUTHWEST RAPID TRANSIT CORRIDOR - STAGE 1
 OSBORNE STATION & ASSOCIATED WORKS
 BEARING LAYOUT AND DETAILS

CITY DRAWING NUMBER: B237-10-30
 SHEET 30 OF 121
 CONSULTANT DRAWING NUMBER: C5-S1115-T

APEGM
 Certificate of Authorization
Dillon Consulting Limited (MB)
 No. 1789 Date: 2010/05/14

G:\CAD\088813\Contract\Contract 5-Osborne Station\Bridge\C5-088813-BEARING-DETAIL DRAWING.dwg