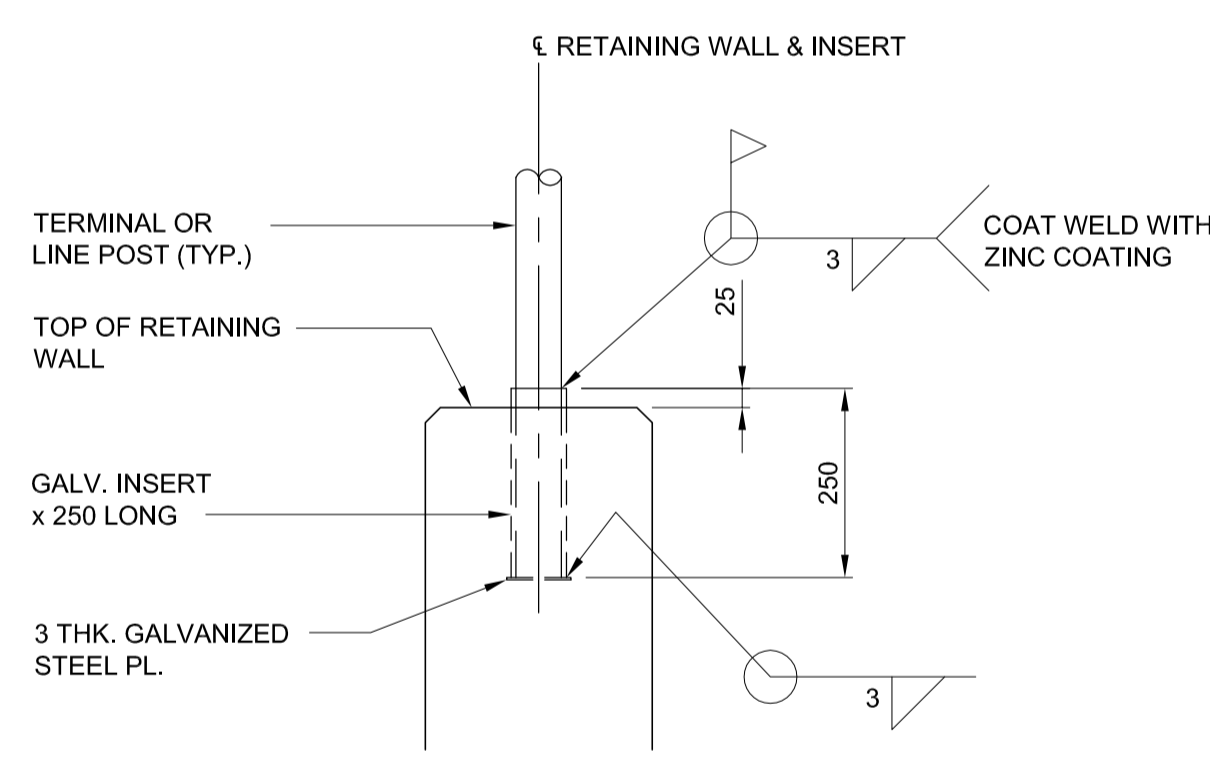


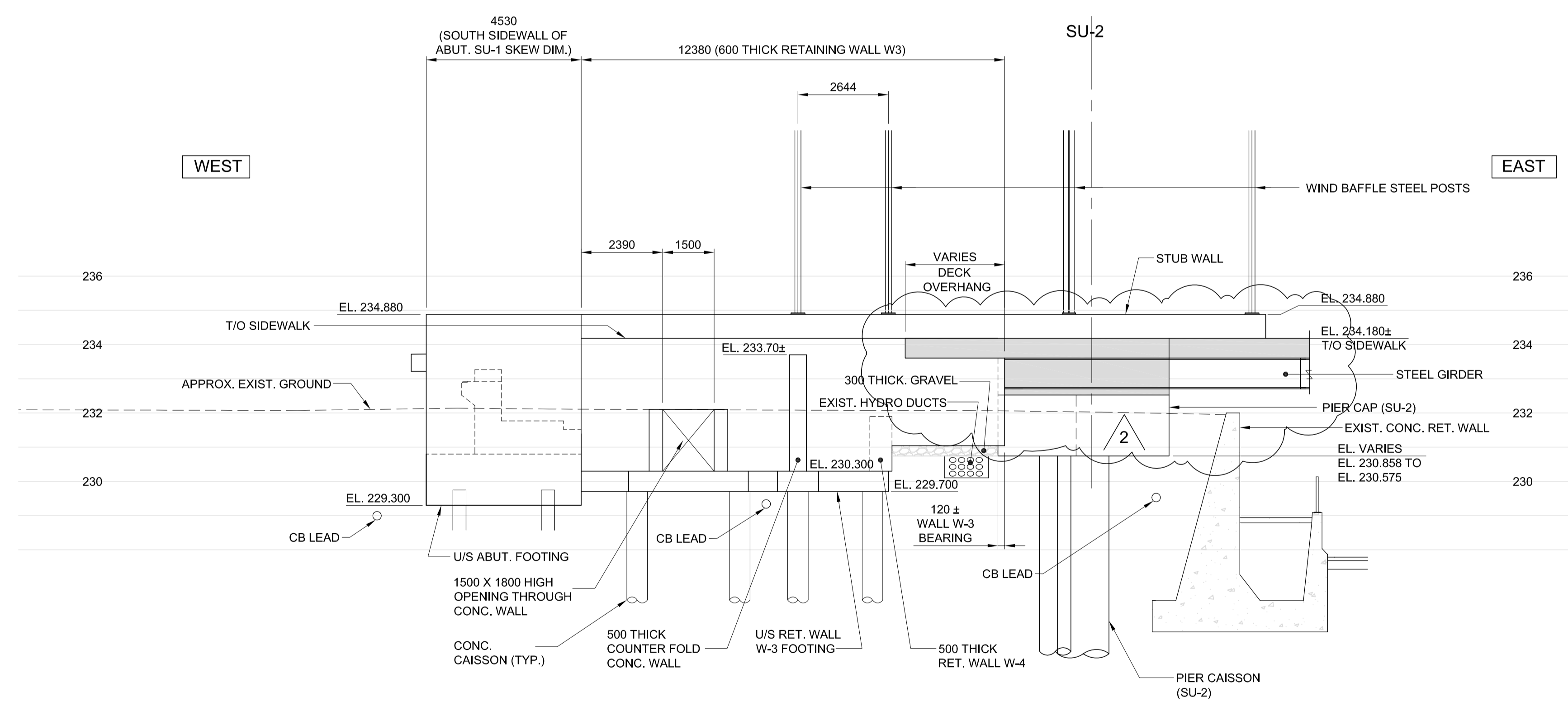
SECTION F
SCALE 1:100



TYPICAL POST INSERT
DETAIL
SCALE 1:10

CHAIN LINK FENCE SCHEDULE		
SLEEVE	114.3 O.D.	SCH 40
TERMINAL POST	88.9 O.D.	SCH 40
LINE POST	60.3 O.D.	SCH 40
TOP RAIL	48.3 O.D.	SCH 40
FABRIC MESH GAUGE	50 mm x 6 ga	

ALL MATERIALS - HOT DP. GALV.



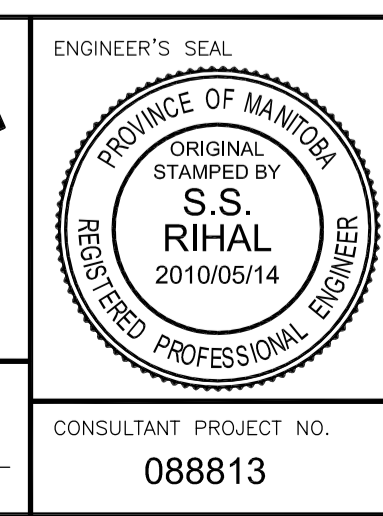
SECTION G
SCALE 1:100



LOCATION UNDERGROUND	APPROVED STRUCTURES	B.M. ELEV.	DESIGNED BY
		654265 (633392.694, 5525026.192) 232.518	FAK
			DRAWN BY: NBG
			CHECKED BY: SSR
			APPROVED BY: DPK
			HOR. SCALE: VERTICAL
			DATE: 2010/05/14

NO.	REVISIONS	DATE	BY
2	ISSUED FOR ADDENDUM #2	10/06/11	DPK
1	ISSUED FOR TENDER	10/05/14	DPK

DESIGNED BY	DRAWN BY	CHECKED BY	APPROVED BY	HOR. SCALE	VERTICAL	DATE
FAK	NBG	SSR	DPK	VERTICAL		2010/05/14



THE CITY OF WINNIPEG
TRANSIT DEPARTMENT

Winnipeg

SOUTHWEST RAPID TRANSIT CORRIDOR - STAGE 1
OSBORNE STATION & ASSOCIATED WORKS

WEST END RETAINING WALLS - SECTIONS & DETAILS 2 OF 3

CITY DRAWING NUMBER: B237-10- 48
SHEET OF: 48 OF 121
CONSULTANT DRAWING NUMBER: C5-S1133-T

CONSULTANT PROJECT NO. 088813

G:\CAD\088813\Contract\Contract 5-08osborne Station\Current\Bridge\C5-S1133-WEST STATION SECTION 2 of 3.dwg