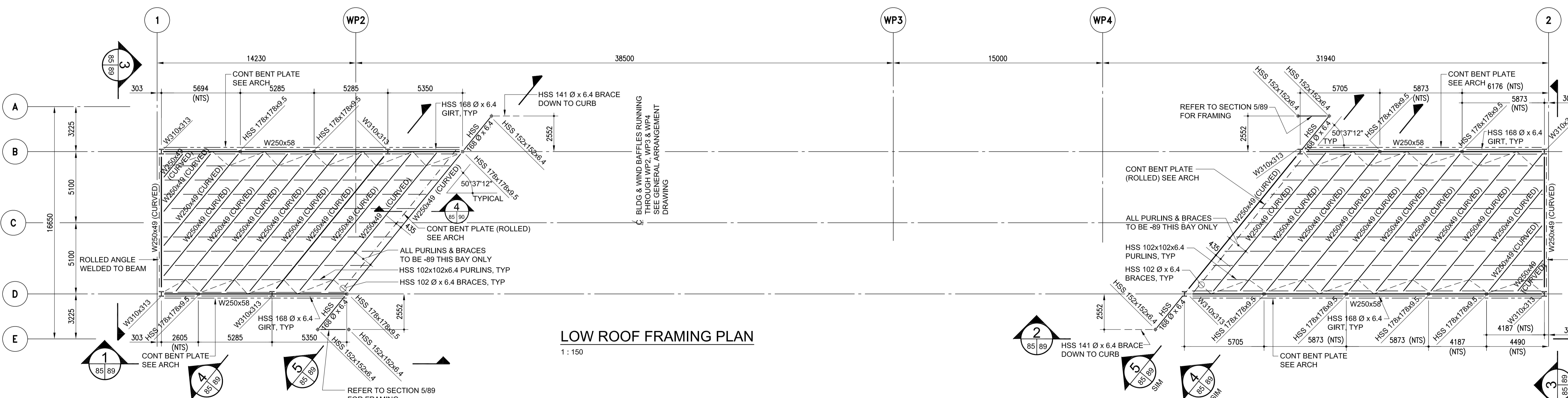


HIGH ROOF FRAMING PLAN
1: 150



LOW ROOF FRAMING PLAN
1: 150

FA: 2009 \ 1200-1289 \ 2009-1280.dwg \ 2009-1280_S2100-S2101_Plans.dwg

REFER TO ADDENDUM #2 FOR WRITTEN DESCRIPTION OF REVISIONS MADE TO DRAWINGS.

APGM
Certificate of Authorization
Crosier Kilgour & Partners Ltd.
No. 235 Date: May 14, 2010

NO.	REVISIONS	DATE	BY
2	ISSUED FOR ADDENDUM #2	10/06/11	TKM
1	ISSUED FOR TENDER	10/05/14	TKM

LOCATION UNDERGROUND	APPROVED STRUCTURES	B.M. ELEV.

DESIGNED BY	BMN / TKM
DRAWN BY	CL
CHECKED BY	BMN / TKM
APPROVED BY	
HOR. SCALE	
VERTICAL	

DILLON CONSULTING

RELEASED FOR CONSTRUCTION
ORIGINAL SIGNED BY RANDY FINGAS
DATE: 2010/05/14

ENGINEER'S SEAL
PROVINCE OF MANITOBA
ORIGINAL STAMPED BY
T.K. MALKIEWICZ
2010/05/14
REGISTERED PROFESSIONAL ENGINEER

THE CITY OF WINNIPEG TRANSIT DEPARTMENT

Winnipeg

SOUTHWEST RAPID TRANSIT CORRIDOR - STAGE 1
OSBORNE STATION & ASSOCIATED WORKS

CITY DRAWING NUMBER
B237-10-85
SHEET **85** OF **121**
CONSULTANT DRAWING NUMBER
C5-S2101-T

CONSULTANT PROJECT NO.
088813

ROOF FRAMING PLANS

300-275 Carlton Street
Winnipeg, Manitoba R2C 5R6
T 204.943.7501
F 204.943.7507
2009-1280

Crosier Kilgour & Partners Ltd.
CONSULTING STRUCTURAL ENGINEERS