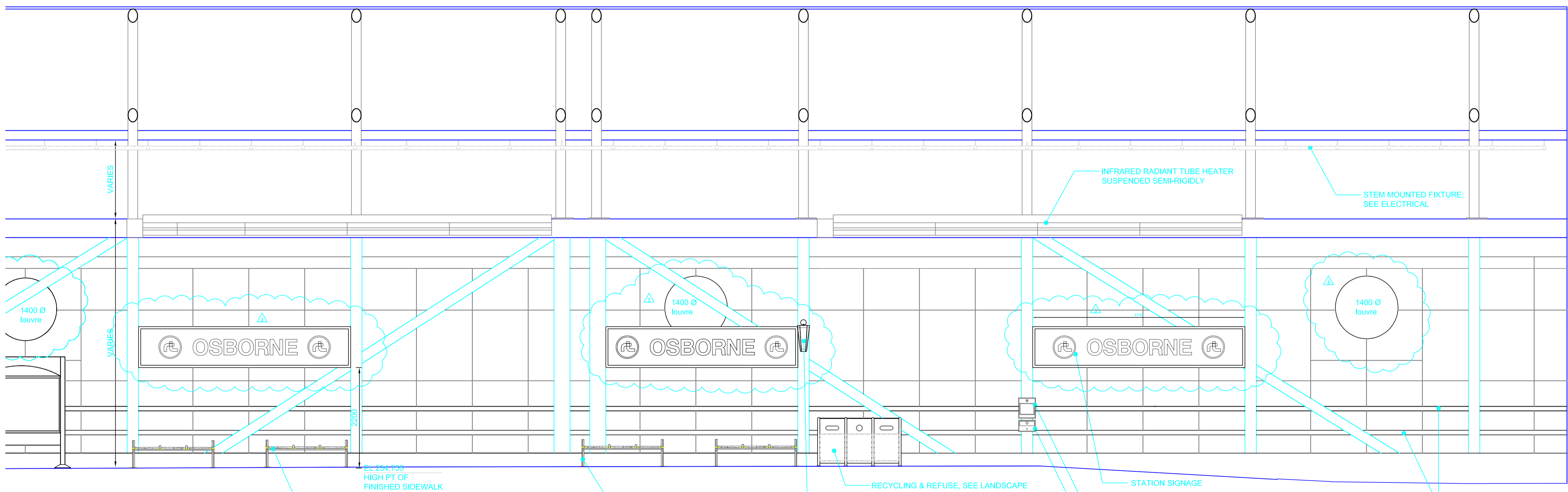


INTERIOR ELEVATION NORTH WEST SIDE
SCALE 1:50

- TRANSIT TERMINAL FLAG POST & FLAG ASSEMBLY BY OTHERS GC TO INSTALL BASE SUPPLIED BY CLIENT
- RECYCLING & REFUSE, SEE LANDSCAPE
- INFO KIOSK ASSEMBLY BY OTHERS GC TO INSTALL BASE SUPPLIED BY CLIENT
- PASSENGER SEATING BACKLESS BENCH WITH ARMS, SEE LANDSCAPE



INTERIOR ELEVATION NORTH EAST SIDE
SCALE 1:50

- INFRARED RADIANT TUBE HEATER SUSPENDED SEMI-RIGIDLY
- STEM MOUNTED FIXTURE; SEE ELECTRICAL
- PASSENGER SEATING BACKLESS BENCH WITH ARMS, SEE LANDSCAPE
- RECYCLING & REFUSE, SEE LANDSCAPE
- ILLUMINATED STATION SIGN TYPE C BY OTHERS HANGING OF SIGN & S&I OF MOUNTING & FASTENING HARDWARE AND ELECTRICAL CONNECTION BY GC
- STATION SIGNAGE
- SAFETY PACK VIDEO MONITORING
- SAFETY PACK COMMUNICATION
- ALUMINUM TUBE RAILINGS

H:_2009\09193 Osborne BR1 Station\W5-A2011-T-interior elevations.dwg



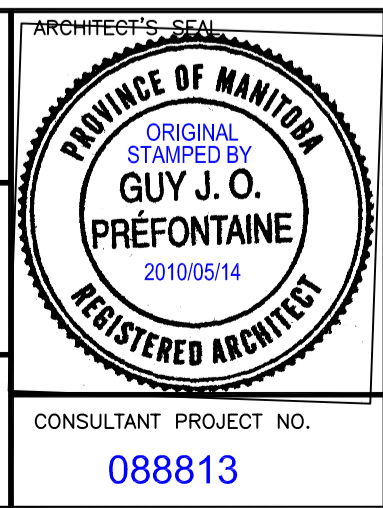
LOCATION UNDERGROUND APPROVED STRUCTURES

NOTE:
LOCATION OF UNDERGROUND STRUCTURES AS SHOWN ARE BASED ON THE BEST INFORMATION AVAILABLE, BUT NO GUARANTEE IS GIVEN THAT ALL EXISTING UTILITIES ARE SHOWN OR THAT THE GIVEN LOCATIONS ARE EXACT. CONFIRMATION OF EXISTENCE AND EXACT LOCATION OF ALL SERVICES MUST BE OBTAINED FROM THE INDIVIDUAL UTILITIES BEFORE PROCEEDING WITH CONSTRUCTION.

| NO. | REVISIONS | DATE | BY |
|-----|------------------------|----------|----|
| 3 | ISSUED FOR ADDENDUM #3 | 10/06/24 | ES |
| 2 | ISSUED FOR ADDENDUM #2 | 10/06/11 | KM |
| 1 | ISSUED FOR TENDER | 10/05/14 | |

DESIGNED BY
DRAWN BY ES
CHECKED BY
APPROVED BY
HOR. SCALE as noted
VERTICAL

gpparchitecture
DILLON CONSULTING
RELEASED FOR CONSTRUCTION
ORIGINAL SIGNED BY RANDY FINGAS
DATE 2010/05/14



THE CITY OF WINNIPEG
TRANSIT DEPARTMENT

Winnipeg

SOUTHWEST RAPID TRANSIT CORRIDOR - STAGE 1
OSBORNE STATION & ASSOCIATED WORKS
INTERIOR ELEVATIONS

CITY DRAWING NUMBER B237-10-82
SHEET 82 OF 121
CONSULTANT DRAWING NUMBER C5-A2011-T

CONSULTANT PROJECT NO. 088813