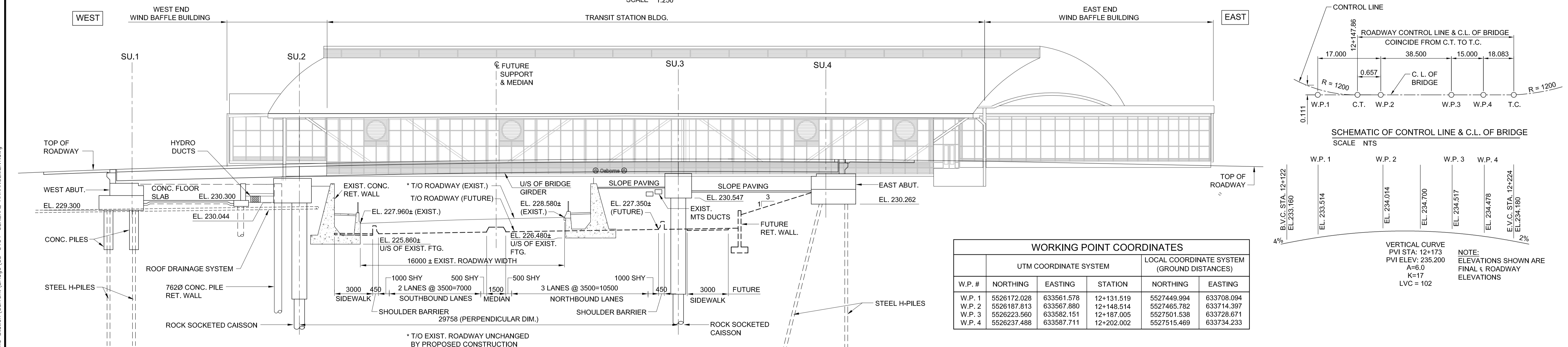


PLAN
SCALE: 1:250



ELEVATION LOOKING NORTH
SCALE: 1:200

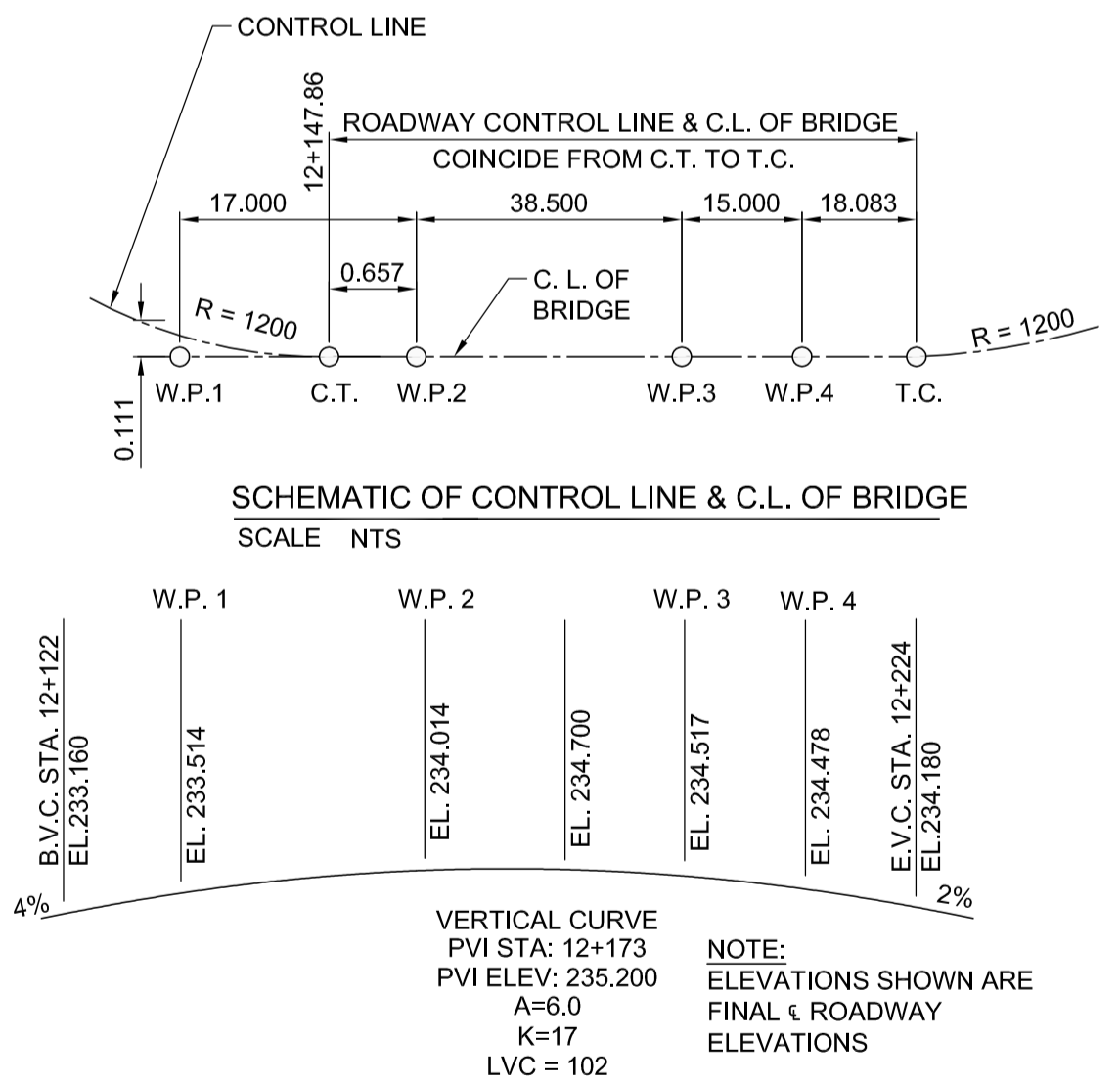
NOTES:

- DIMENSIONS OF BRIDGE ARE ON SKEW.
- DIMENSIONS OF ROADWAY ARE PERPENDICULAR TO CENTER LINE OF FUTURE SUPPORT/MEDIAN.



LOCATION UNDERGROUND STRUCTURES	APPROVED DATE	B.M. ELEV.	654265 (633392.694, 5525026.192) 232.518
SUPY. U/G STRUCTURES COMMITTEE	DATE	DESIGNED BY	FAK / RTP
		DRAWN BY	NBG
		CHECKED BY	SSR
		APPROVED BY	DPK
		HOR. SCALE	RELEASED FOR CONSTRUCTION
		VERTICAL	ORIGINAL SIGNED BY RANDY FINGAS
1 ISSUED FOR TENDER	10/05/14	DATE	2010/05/14
NO. REVISIONS	DATE	BY	

W.P. #	UTM COORDINATE SYSTEM			LOCAL COORDINATE SYSTEM (GROUND DISTANCES)	
	NORTHING	EASTING	STATION	NORTHING	EASTING
W.P. 1	5526172.028	633561.578	12+131.519	5527449.994	633708.094
W.P. 2	5526187.813	633567.880	12+148.514	5527465.782	633714.397
W.P. 3	5526223.560	633582.151	12+187.005	5527501.538	633728.671
W.P. 4	5526237.488	633587.711	12+202.002	5527515.469	633734.233



VERTICAL CURVE
PVI STA: 12+173
PVI ELEV: 235.200
A=6.0
K=17
LVC = 102

NOTE:
ELEVATIONS SHOWN ARE FINAL & ROADWAY ELEVATIONS

G:\CAD\088813\Contract\Contract 5-Osborne Station\Current\Bridges\C5-G104-GENERAL ARRANGEMENT.dwg

RELEASED FOR CONSTRUCTION
ORIGINAL SIGNED BY RANDY FINGAS
DATE: 2010/05/14

THE CITY OF WINNIPEG
TRANSIT DEPARTMENT

SOUTHWEST RAPID TRANSIT CORRIDOR - STAGE 1
OSBORNE STATION & ASSOCIATED WORKS

GENERAL ARRANGEMENT

CITY DRAWING NUMBER
B237-10- 5

SHEET
5 OF **121**

CONSULTANT DRAWING NUMBER
C5-G104-T