

**NOTES FOR FENCING AT MB. HYDRO SUBSTATION:**

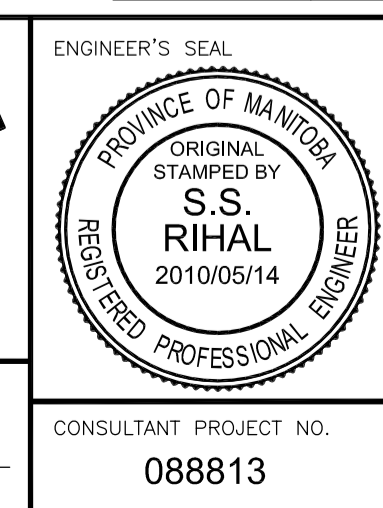
- HYDRO'S SECURITY FENCING AT HYDRO SUBSTATION TO CONSIST OF :
    - TYPE 2A - CHAINLINK FENCE SYSTEM DESIGNED, SUPPLIED AND INSTALLED BY MB. HYDRO
    - TYPE 3 - CONTRACTOR TO SUPPLY AND INSTALL TEMPORARY NON CONDUCTIVE FENCE (N.C.F.) SYSTEM AS SHOWN ON SHEET 10, CONTRACTOR TO REMOVE AND SALVAGE MATERIALS AND DELIVER TO MANITOBA HYDRO AT COMPLETION OF PROJECT AS DIRECTED BY CONTRACT ADMINISTRATOR.
    - TYPE 4 - CONTRACTOR TO SUPPLY AND INSTALL NON CONDUCTIVE FENCE PANEL SYSTEM AS SHOWN ON SHEET 10.
  - FIELD VERIFY ALL N.C.F. DIMENSIONS PRIOR TO FABRICATION
  - NO FABRICATION OF N.C.F. SHALL COMMENCE UNTILL CONTRACT ADMINISTRATOR HAS REVIEWED SHOP DRAWINGS AND APPROVAL FROM CONTRACT ADMINISTRATOR HAS BEEN OBTAINED.
  - GATE AND HARDWARE TO BE CONSTRUCTED ENTIRELY OF NON CONDUCTIVE MATERIALS. PROVIDE LOCKABLE LATCH AS DIRECTED BY CONTRACT ADMINISTRATOR.
  - ALL N.C. FENCING TO BE MANUFACTURED WITH PHENOLIC RESINS AND MUST MEET MANITOBA HYDRO'S FIRE SPREAD AND SMOKE DEVELOPED CRITERIA .
- CONTRACTOR SHALL NOT COMMENCE FOUNDATION CONSTRUCTION WEST OF OSBORNE ST. UNTIL SECURITY FENCE AT HYDRO SUBSTATION HAS BEEN RELOCATED. EXIST. SECURITY FENCE TO REMAIN IN PLACE UNTIL NEW FENCE IS CONSTRUCTED. FENCE CONSTRUCTION TO BE COORDINATED WITH MB. HYDRO.
  - CONTRACTOR SHALL FIELD VERIFY GATE WIDTH REQUIRED. PROVIDE LOCKABLE LATCH AS DIRECTED BY CONTRACT ADMINISTRATOR.
  - REFER TO HYDRO'S STANDARD DETAIL SHEET 1-01000-DE-15100-0010 SHEET 0001 REV 3 TO OBTAIN MATERIAL SPECIFICATION AND HYDRO PART #'S REFERED TO ON SHEET 10 AND 11

FENCING SCHEDULE		
TYPE	DESCRIPTION	SYMBOL
TYPE 1	TEMPORARY CHAINLINK CONSTRUCTION FENCE	—○—○—○—
TYPE 2	PERMANENT CHAINLINK - SUPPLIED AND INSTALLED BY CONTRACTOR	—x—x—x—
TYPE 2A	PERMANENT CHAINLINK - SUPPLIED AND INSTALLED BY HYDRO	—x—x—x—
TYPE 3	TEMPORARY HYDRO SECURITY FENCE - NON CONDUCTIVE FENCE SYSTEM (N.C.F.)	—H—H—H—
TYPE 4	PERMANENT HYDRO SECURITY FENCE -NON CONDUCTIVE FENCE SYSTEM (N.C.F.)	—○—○—○—



LOCATION UNDERGROUND	APPROVED STRUCTURES	B.M. ELEV.	654265 (633392.694, 5525026.192) 232.518
SUPY. U/G STRUCTURES COMMITTEE	DATE	DESIGNED BY	RTP
		DRAWN BY	PMW
		CHECKED BY	SSR
		APPROVED BY	DPK
		HOR. SCALE	1 : 200
		VERTICAL	
1	ISSUED FOR TENDER	10/05/14	DPK
NO.	REVISIONS	DATE	BY
		2010/05/14	

RELEASER FOR CONSTRUCTION	ORIGINAL SIGNED BY RANDY FINGAS	DATE	2010/05/14
---------------------------	---------------------------------	------	------------



**THE CITY OF WINNIPEG TRANSIT DEPARTMENT**

Winnipeg

SOUTHWEST RAPID TRANSIT CORRIDOR - STAGE 1  
OSBORNE STATION & ASSOCIATED WORKS

SITE FENCING - PLAN AT WEST END

CITY DRAWING NUMBER: B237-10- 8  
SHEET 8 OF 121  
CONSULTANT DRAWING NUMBER: C5-G107-T

CONSULTANT PROJECT NO. 088813

G:\CAD\088813\Contract\Contract 5- Osborne Station\Current\Bridges\C5-G108-Site Fencing and Temp. Workings.dwg