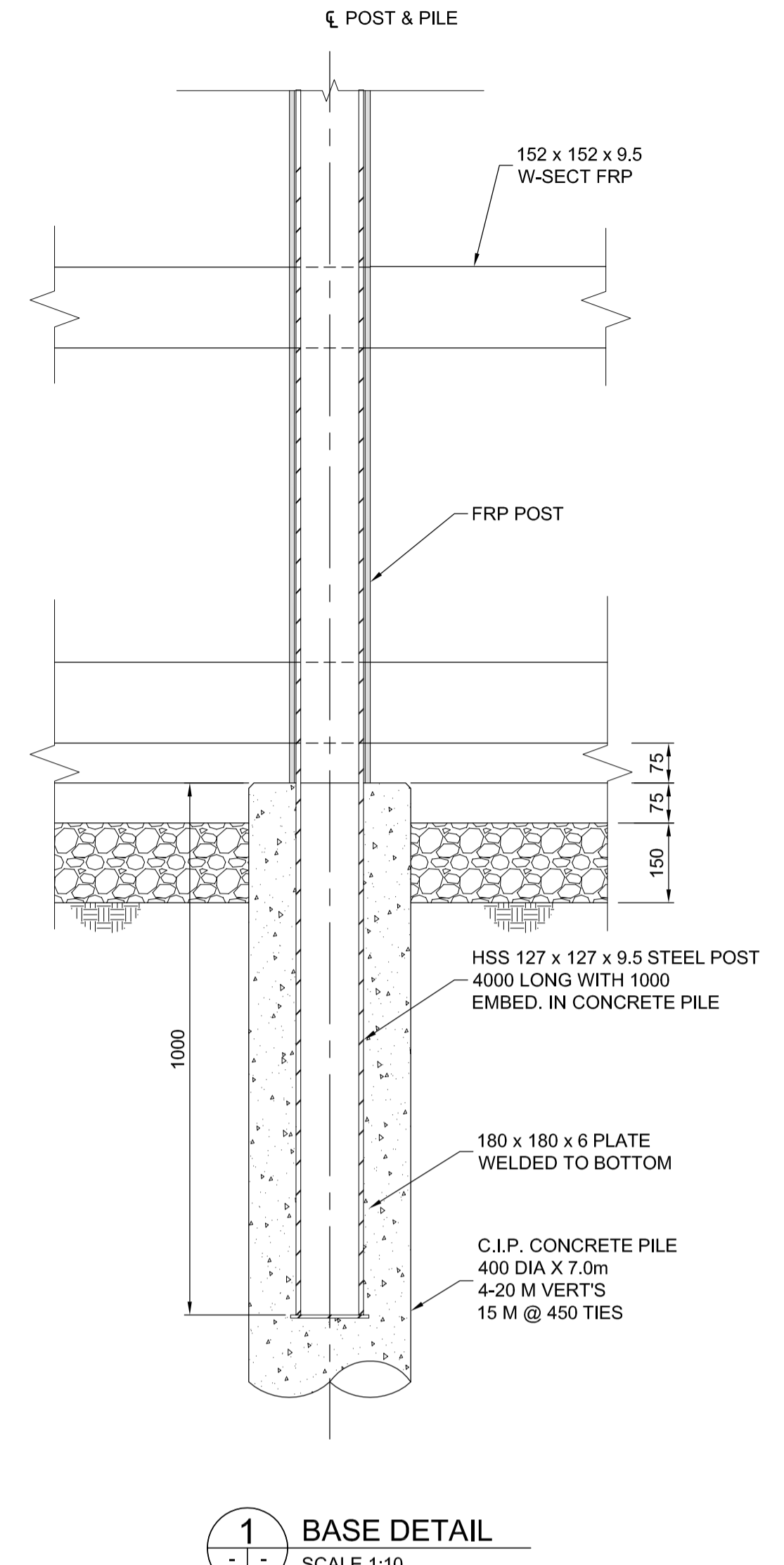
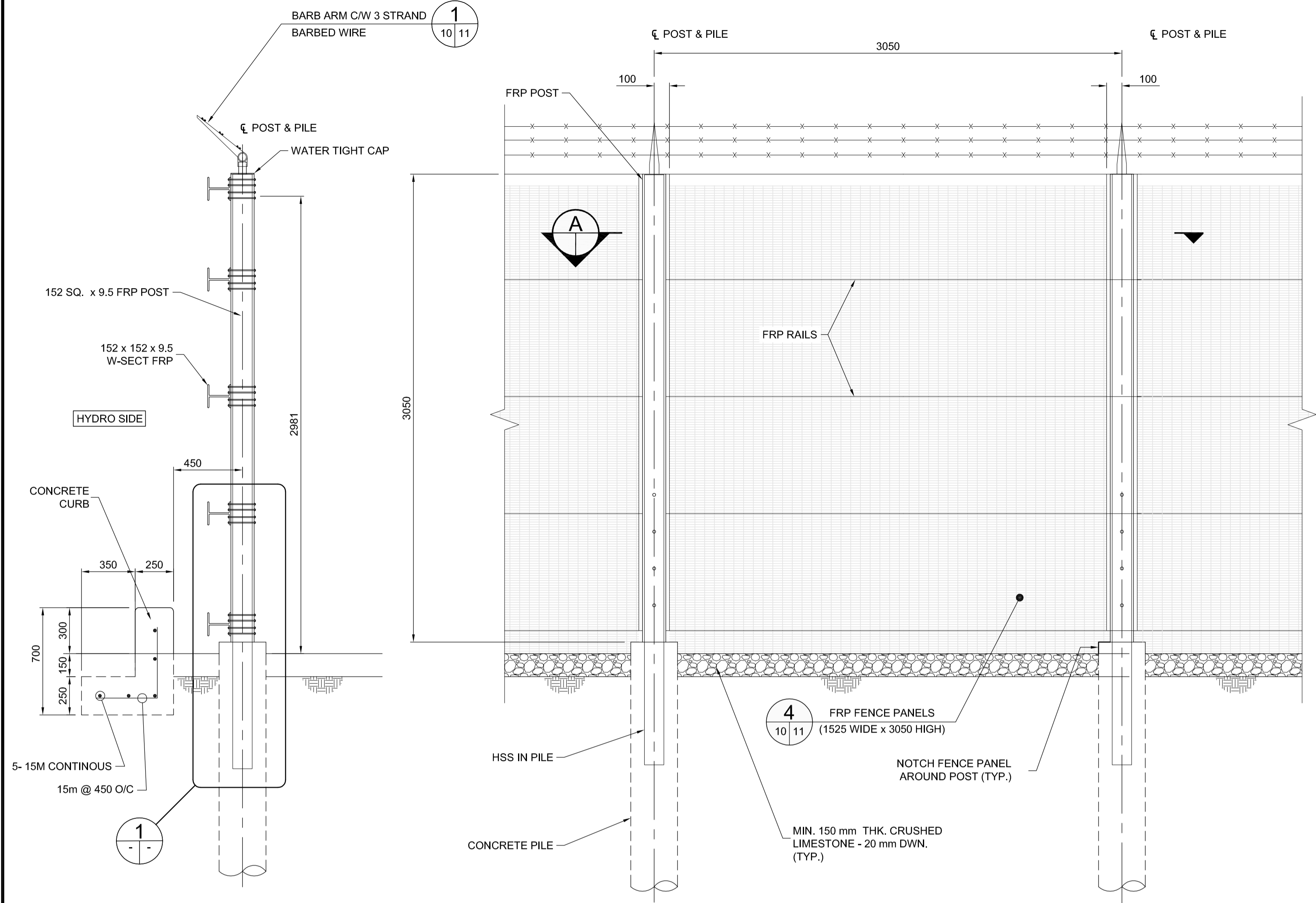
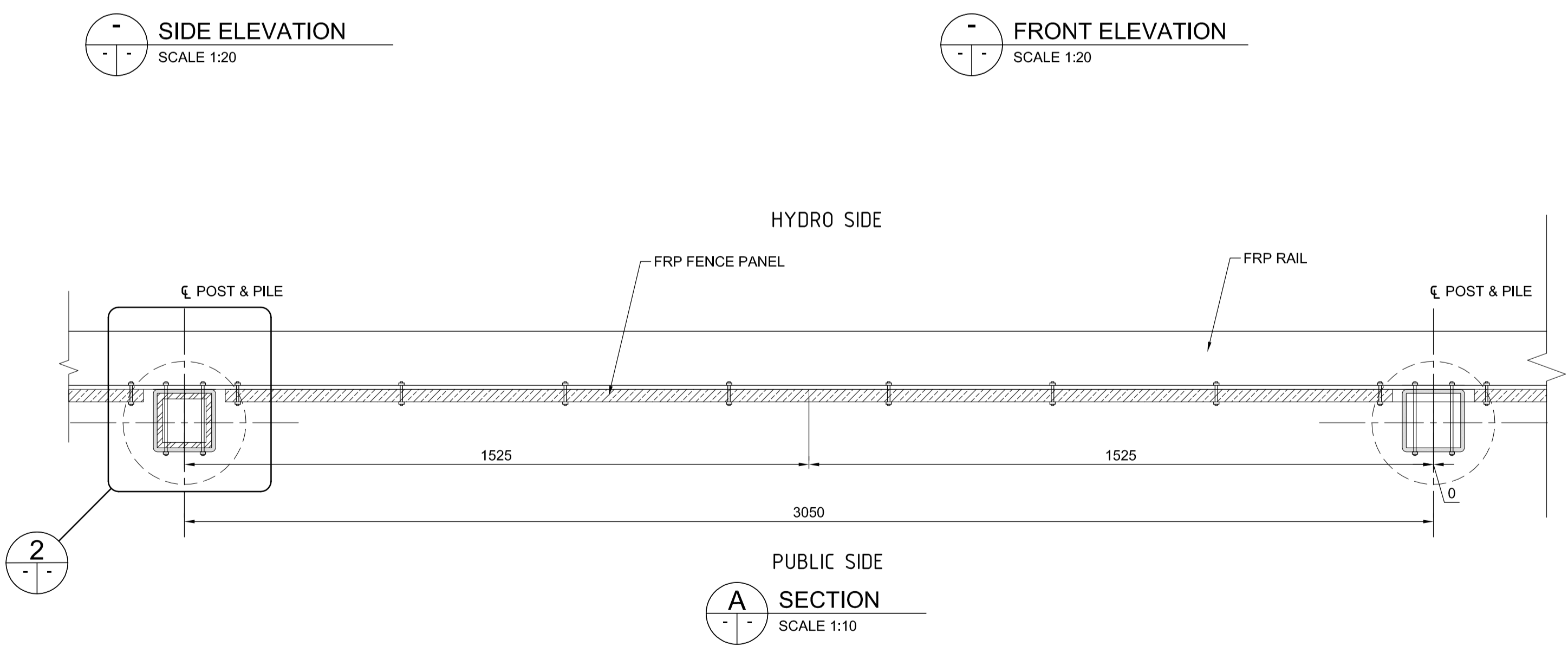


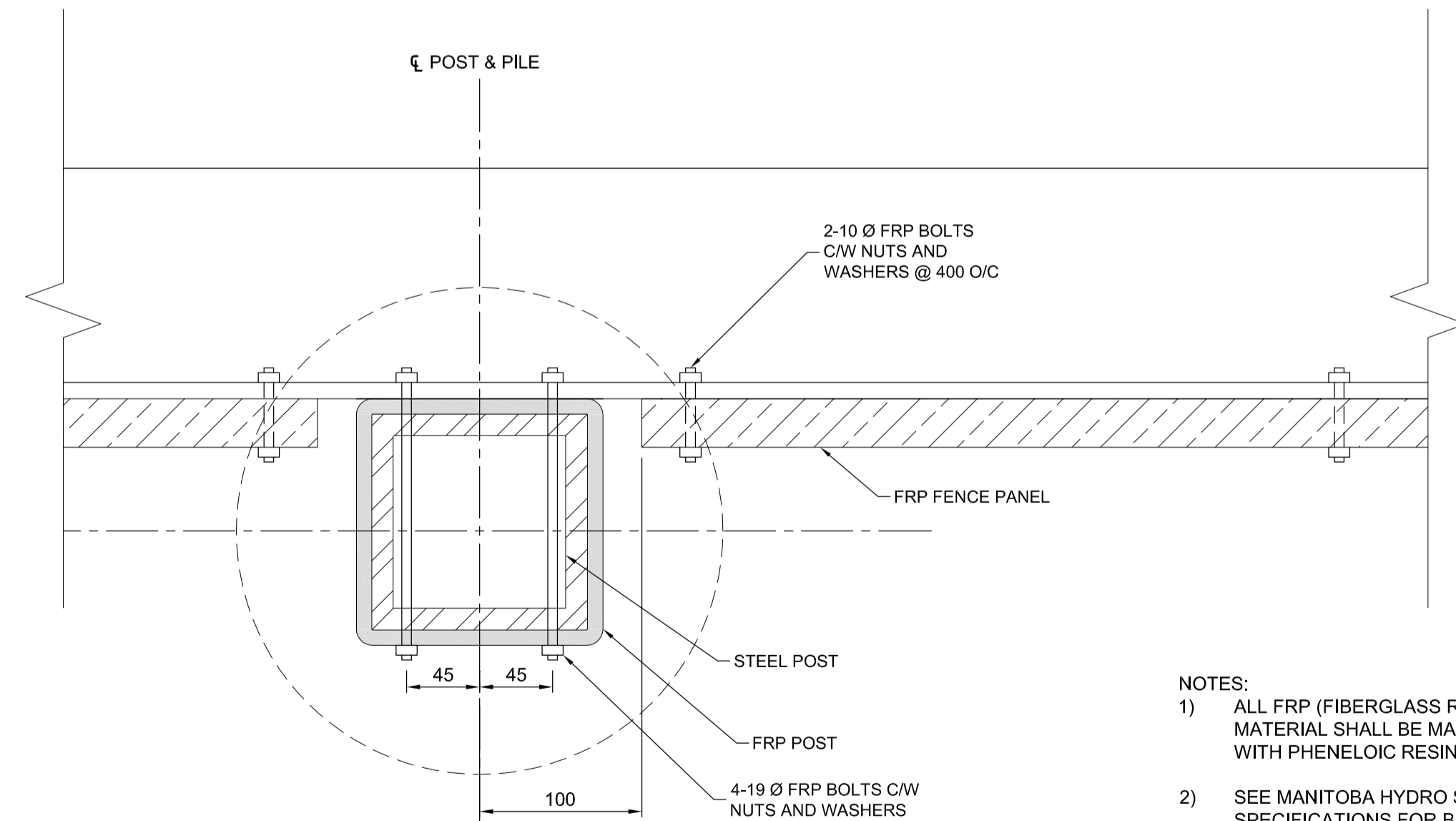
G:\CAD\088813\Contract\Contract 5-Osborne Station\Current\Bridges\C5-G111-P-SITE FENCING AND TEMP WORKS SECTION.dwg



1 BASE DETAIL  
SCALE 1:10



A SECTION  
SCALE 1:10



2 POST DETAIL  
SCALE NTS

- NOTES:
- 1) ALL FRP (FIBERGLASS REINFORCED PLASTIC) MATERIAL SHALL BE MANUFACTURED WITH PHENOLIC RESIN
  - 2) SEE MANITOBA HYDRO STANDARD SPECIFICATIONS FOR BARB WIRE ACCESSORIES.



LOCATION UNDERGROUND APPROVED STRUCTURES SUPY. U/G STRUCTURES COMMITTEE DATE NOTE: LOCATION OF UNDERGROUND STRUCTURES AS SHOWN ARE BASED ON THE BEST INFORMATION AVAILABLE BUT NO GUARANTEE IS GIVEN THAT ALL EXISTING UTILITIES ARE SHOWN OR THAT THE GIVEN LOCATIONS ARE EXACT. CONFIRMATION OF EXISTENCE AND EXACT LOCATION OF ALL SERVICES MUST BE OBTAINED FROM THE INDIVIDUAL UTILITIES BEFORE PROCEEDING WITH CONSTRUCTION.	B.M. ELEV. 654265 (633392.694, 5525026.192) 232.518 DESIGNED BY SSR DRAWN BY RTP CHECKED BY SSR APPROVED BY DPK HOR. SCALE 1 : 20 VERTICAL DATE 2010/05/14	 RELEASED FOR CONSTRUCTION ORIGINAL SIGNED BY RANDY FINGAS DATE 2010/05/14	ENGINEER'S SEAL PROVINCE OF MANITOBA ORIGINAL STAMPED BY S.S. RIHAL 2010/05/14 REGISTERED PROFESSIONAL ENGINEER CONSULTANT PROJECT NO. 088813	 <b>THE CITY OF WINNIPEG</b> TRANSIT DEPARTMENT SOUTHWEST RAPID TRANSIT CORRIDOR - STAGE 1 OSBORNE STATION & ASSOCIATED WORKS HYDRO SUBSTATION SECURITY FENCING 1 OF 2	CITY DRAWING NUMBER B237-10-10 SHEET 10 OF 121 CONSULTANT DRAWING NUMBER C5-G109-T
---	---	---	---	--	--