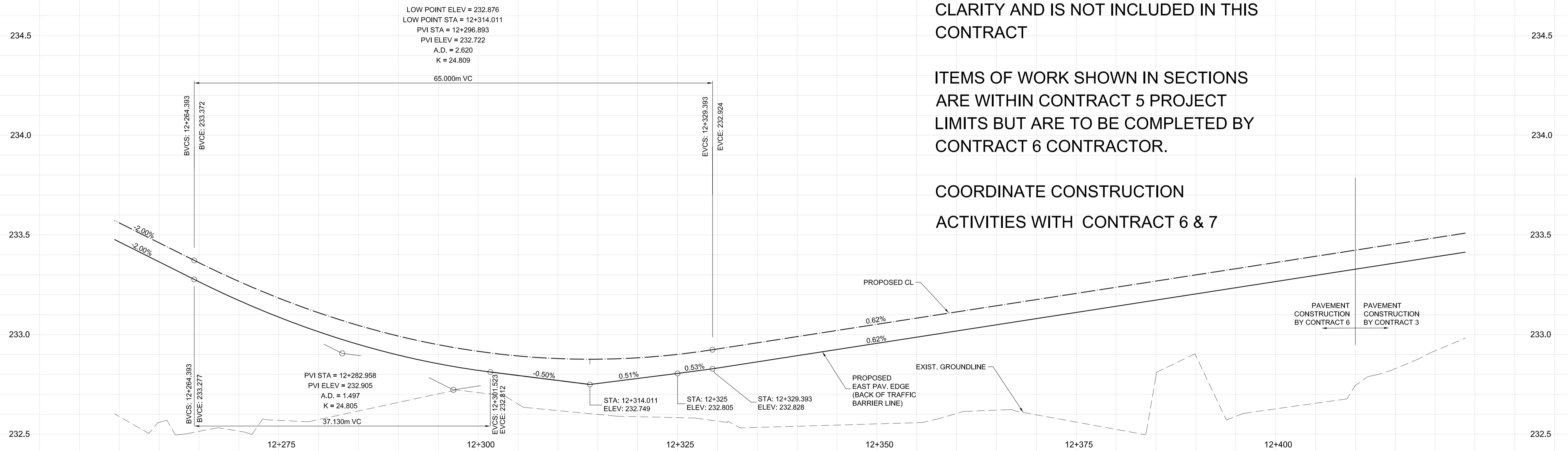


SOUTHBOUND

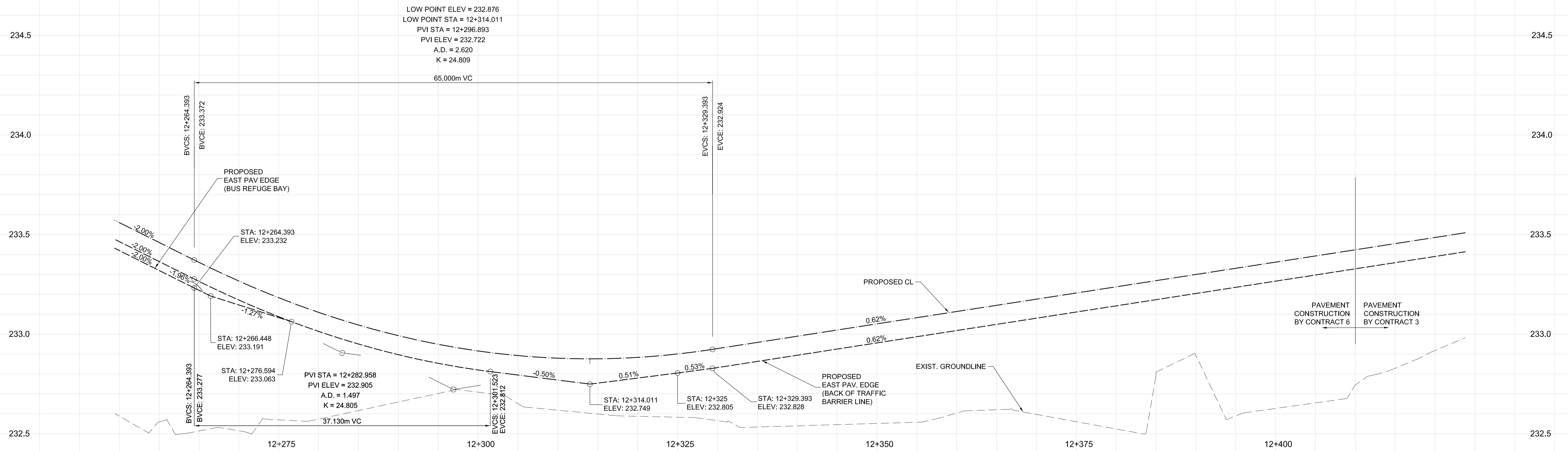


THIS PAGE HAS BEEN SHOWN FOR CLARITY AND IS NOT INCLUDED IN THIS CONTRACT

ITEMS OF WORK SHOWN IN SECTIONS ARE WITHIN CONTRACT 5 PROJECT LIMITS BUT ARE TO BE COMPLETED BY CONTRACT 6 CONTRACTOR.

COORDINATE CONSTRUCTION ACTIVITIES WITH CONTRACT 6 & 7

NORTHBOUND



G:\CAD\088813\Contract\Contract 5-Osborne Station\Current\Bridges\C5-C110-P-Faving-Grading-Busway.dwg

LOCATION UNDERGROUND STRUCTURES SUPV. U/G STRUCTURES COMMITTEE DATE		B.M. ELEV. 654265 (633392.694, 5525026.192) 232.518		DESIGNED BY RTP DRAWN BY TJH/PMW CHECKED BY TJP APPROVED BY DPK						SOUTHWEST RAPID TRANSIT CORRIDOR - STAGE 1 OSBORNE STATION & ASSOCIATED WORKS		CITY DRAWING NUMBER B237-10-104 SHEET 104 OF 121	
NOTE: LOCATION OF UNDERGROUND STRUCTURES AS SHOWN ARE BASED ON THE BEST INFORMATION AVAILABLE BUT NO GUARANTEE IS GIVEN THAT ALL EXISTING UTILITIES ARE SHOWN OR THAT THE GIVEN LOCATIONS ARE EXACT. CONFIRMATION OF EXISTENCE AND EXACT LOCATION OF ALL SERVICES MUST BE OBTAINED FROM THE INDIVIDUAL UTILITIES BEFORE PROCEEDING WITH CONSTRUCTION.		1 ISSUED FOR TENDER 10/05/14 DPK		HOR. SCALE 1 : 250 VERTICAL 1 : 10				RELEASED FOR CONSTRUCTION ORIGINAL SIGNED BY RANDY FINGAS DATE 2010/05/14		CONSULTANT PROJECT NO. 088813		PROFILE 2 OF 2	



METRIC
 WHOLE NUMBERS INDICATE MILLIMETRES
 DECIMALIZED NUMBERS INDICATE METRES.