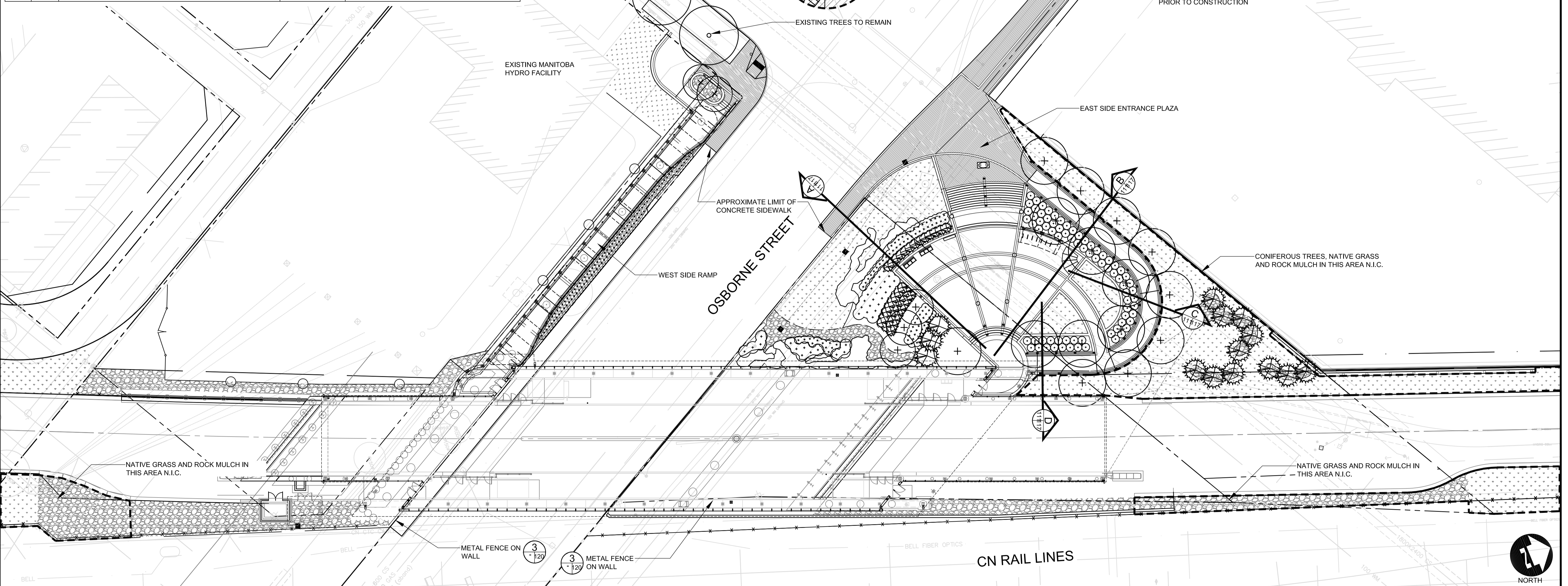


PLANT LIST

KEY	QTY.	COMMON NAME/BOTANICAL NAME	SIZE	REMARKS
DECIDUOUS TREES				
A	16	AMERICAN ELM / ULMUS AMERICANA	75mm cal.	SPECIMEN, W.B. MACHINE DUG WITH MIN. 10 BRANCHES IN WELL BRANCHED HEAD, STRAIGHT TRUNK, MIN. HT. 4.5m, BRANCHING HT. 1.8m.
B	5	TOBA HAWTHORN / CRATAEGUS X MORDENENSIS 'TOBA'	75mm cal.	SPECIMEN, W.B. MACHINE DUG WITH MIN. 10 BRANCHES IN WELL BRANCHED HEAD, STRAIGHT TRUNK, MIN. HT. 4.5m, BRANCHING HT. 1.8m.
CONIFEROUS TREES				
C	0	WHITE SPRUCE / PICEA GLAUCA	1.8m ht.	SPECIMEN, W.B. MACHINE DUG WITH SINGLE UPRIGHT LEADER, STRAIGHT TRUNK, WELL BRANCHED, FULL FORM.
D	3	COLORADO SPRUCE / PICEA PUNGENS	1.8m ht.	SPECIMEN, W.B. MACHINE DUG WITH SINGLE UPRIGHT LEADER, STRAIGHT TRUNK, WELL BRANCHED, FULL FORM.
DECIDUOUS SHRUBS				
E	51	SNOWMOUND SPIREA / SPIRAEA NIPPONICA 'SNOWMOUND'	2 gal pot.	SPECIMEN, CONTAINER GROWN, WITH MINIMUM 3 STALKS IN WELL BRANCHED PLANT, MINIMUM 500mm HEIGHT.
F	18	IVORY HALO DOGWOOD / CORNUS ALBA 'IVORY HALO'	5 gal pot.	SPECIMEN, CONTAINER GROWN, WITH MINIMUM 3 STALKS IN WELL BRANCHED PLANT, MINIMUM 1.2m HEIGHT.
G	34	ADELAIDE HOODLESS ROSE / ROSA 'ADELAIDE HOODLESS'	2 gal pot.	SPECIMEN, CONTAINER GROWN, WITH MINIMUM 3 STALKS IN WELL BRANCHED PLANT, MINIMUM 500mm HEIGHT.
CONIFEROUS SHRUBS				
H	49	BLUE DANUBE JUNIPER / JUNIPERUS SABINA 'BLUE DANUBE'	5 gal pot.	SPECIMEN, CONTAINER GROWN, WITH MINIMUM 3 STALKS IN WELL BRANCHED PLANT, MINIMUM 750mm SPREAD.
VINES				
J	164	VIRGINIA CREEPER / PARTHENOISSUS QUINQUEFOLIA	2 gal pot.	SPECIMEN, CONTAINER GROWN, WITH MINIMUM 3 STALKS IN WELL BRANCHED PLANT.



LEGEND

	NATIVE GRASSES
	MULCH BED
	CONCRETE SIDEWALK
	EXISTING TREES TO REMAIN
	PROPOSED DECIDUOUS TREE
	PROPOSED CONIFEROUS TREE
	EXISTING DECIDUOUS TREE TO BE REMOVED
	EXISTING CONIFEROUS TREE TO BE REMOVED
	PROPOSED SHRUBS

	PLANT KEY
	QUANTITY
	PLANT KEY

LOCATION UNDERGROUND STRUCTURES	APPROVED STRUCTURES
ORIGINAL SIGNED BY	X
SUPV. U/G STRUCTURES COMMITTEE	DATE
NOTE: LOCATION OF UNDERGROUND STRUCTURES AS SHOWN ARE BASED ON THE BEST INFORMATION AVAILABLE. BUT NO GUARANTEE IS GIVEN THAT ALL EXISTING UTILITIES ARE SHOWN OR THAT THE GIVEN LOCATIONS ARE EXACT. CONFIRMATION OF EXISTENCE AND EXACT LOCATION OF ALL SERVICES MUST BE OBTAINED FROM THE INDIVIDUAL UTILITIES BEFORE PROCEEDING WITH CONSTRUCTION.	

B.M. ELEV.	BM ELEV.
DESIGNED BY	SR/JW
DRAWN BY	JW/TM
CHECKED BY	JW/SR
APPROVED BY	
HOR. SCALE	1:250
VERTICAL	
1 ISSUED FOR TENDER	10/05/14 JW
NO. REVISIONS	DATE BY
1	2010-05-07

DESIGNED BY SR/JW
 DRAWN BY JW/TM
 CHECKED BY JW/SR
 APPROVED BY
 HOR. SCALE 1:250
 VERTICAL
 1 ISSUED FOR TENDER 10/05/14 JW
 NO. REVISIONS DATE BY
 1 2010-05-07

MCGOWAN-RUSSELL

DILLON CONSULTING

RELEASED FOR CONSTRUCTION ORIGINAL SIGNED BY RANDY ENGAS. DATE: 2010/05/14

LANDSCAPE ARCHITECT'S SEAL

ORIGINAL SIGNED BY JACKIE WILKIE

JACQUELINE L. WILKIE member no. 75

CONSULTANT PROJECT NO. 08-028

THE CITY OF WINNIPEG
TRANSIT DEPARTMENT

Winnipeg

SOUTHWEST RAPID TRANSIT CORRIDOR - STAGE 1
OSBORNE STATION AND ASSOCIATED WORKS

CITY DRAWING NUMBER B237-10-111
SHEET 111 OF 121
CONSULTANT DRAWING NUMBER C5-L-5000-T

LANDSCAPE WORKS
OVERALL PLAN

X:\08-028 Southwestern BRT Corridor\dwg\2010\osborne station\wkg\osborne LANDSCAPE PLAN 2010-05-05-07.dwg