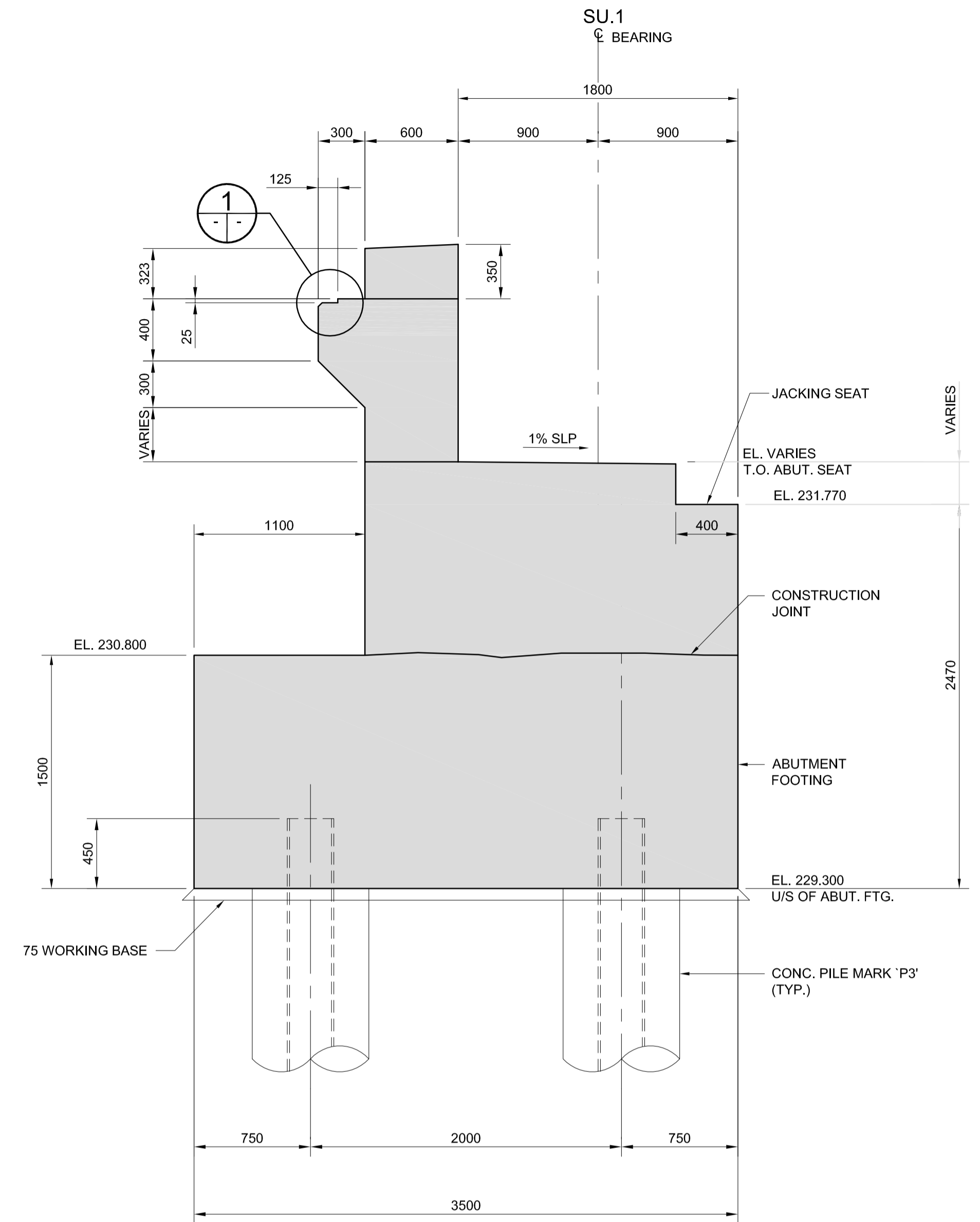
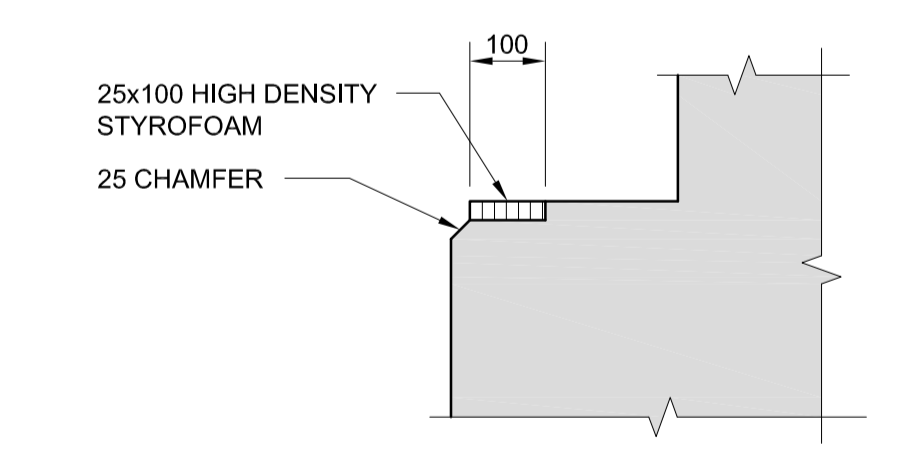


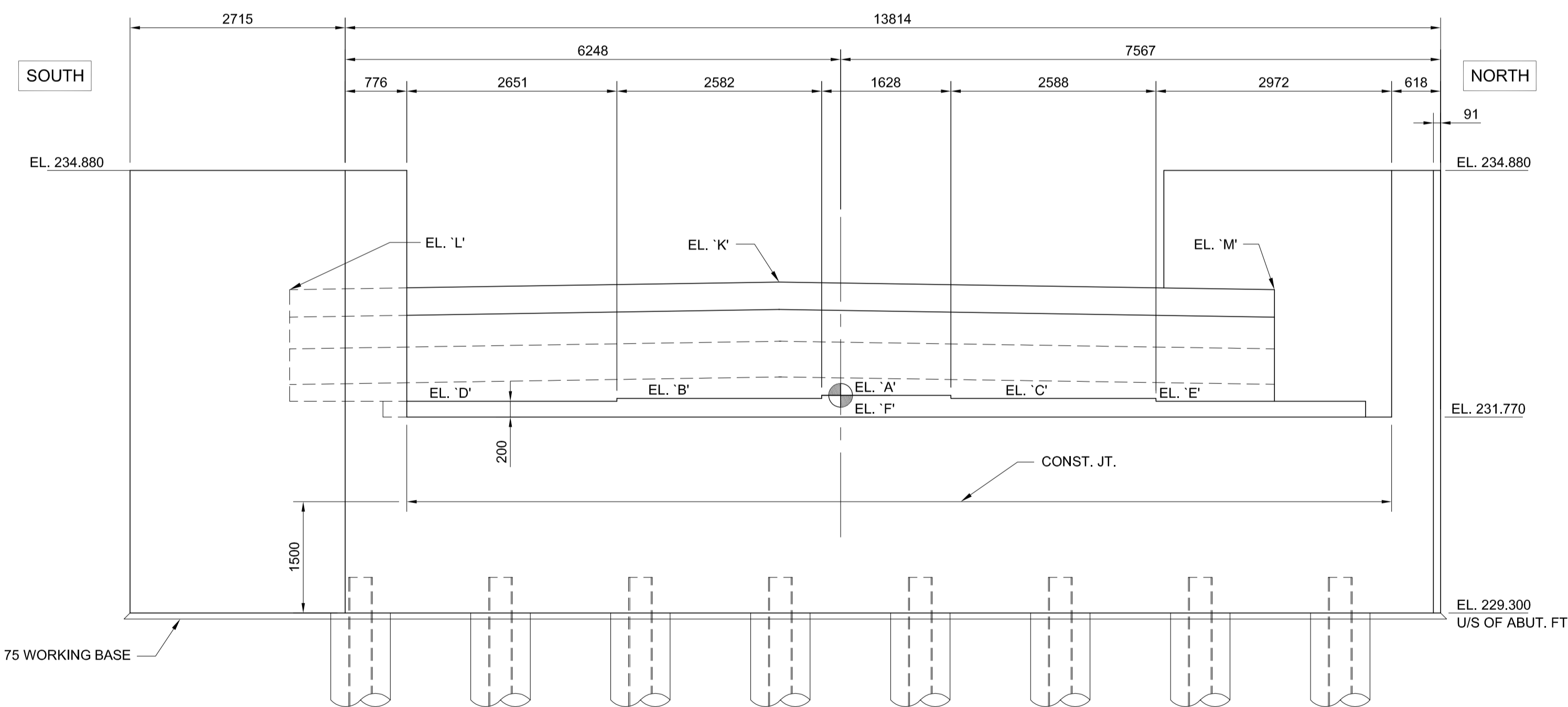
PLAN
SCALE 1:50



SECTION
SCALE 1:25



DETAIL
SCALE 1:10



ELEVATION

NOTE:
1. ALL EXPOSED EDGES TO BE 20mm CHAMFER UNLESS NOTED OTHERWISE.

TABLE OF ELEVATIONS								
ABUT.	A	B	C	D	E	K	L	M
SU-1	232.130	232.081	232.145	231.982	232.116	???	???	???



LOCATION UNDERGROUND APPROVED STRUCTURES SUPV. U/G STRUCTURES COMMITTEE DATE NOTE: LOCATION OF UNDERGROUND STRUCTURES AS SHOWN ARE BASED ON THE BEST INFORMATION AVAILABLE BUT NO GUARANTEE IS GIVEN THAT ALL EXISTING UTILITIES ARE SHOWN OR THAT THE GIVEN LOCATIONS ARE EXACT. CONFIRMATION OF EXISTENCE AND EXACT LOCATION OF ALL SERVICES MUST BE OBTAINED FROM THE INDIVIDUAL UTILITIES BEFORE PROCEEDING WITH CONSTRUCTION.	B.M. ELEV. DESIGNED BY: FAK DRAWN BY: NBG CHECKED BY: SSR APPROVED BY: DPK HOR. SCALE: AS NOTED VERTICAL: AS NOTED	DILLON CONSULTING RELEASED FOR CONSTRUCTION ORIGINAL SIGNED BY RANDY FINGAS DATE: 2010/05/14	ENGINEER'S SEAL PROVINCE OF MANITOBA ORIGINAL STAMPED BY S.S. RIHAL 2010/05/14 REGISTERED PROFESSIONAL ENGINEER CONSULTANT PROJECT NO. 088813	THE CITY OF WINNIPEG TRANSIT DEPARTMENT SOUTHWEST RAPID TRANSIT CORRIDOR - STAGE 1 OSBORNE STATION & ASSOCIATED WORKS WEST ABUTMENT SU-1 CONCRETE	CITY DRAWING NUMBER B237-10- 17 SHEET 17 OF 121 CONSULTANT DRAWING NUMBER C5-S1102-T
1 ISSUED FOR TENDER NO. REVISIONS	10/05/14 DATE BY	2010/05/14 DATE	2010/05/14 DATE		