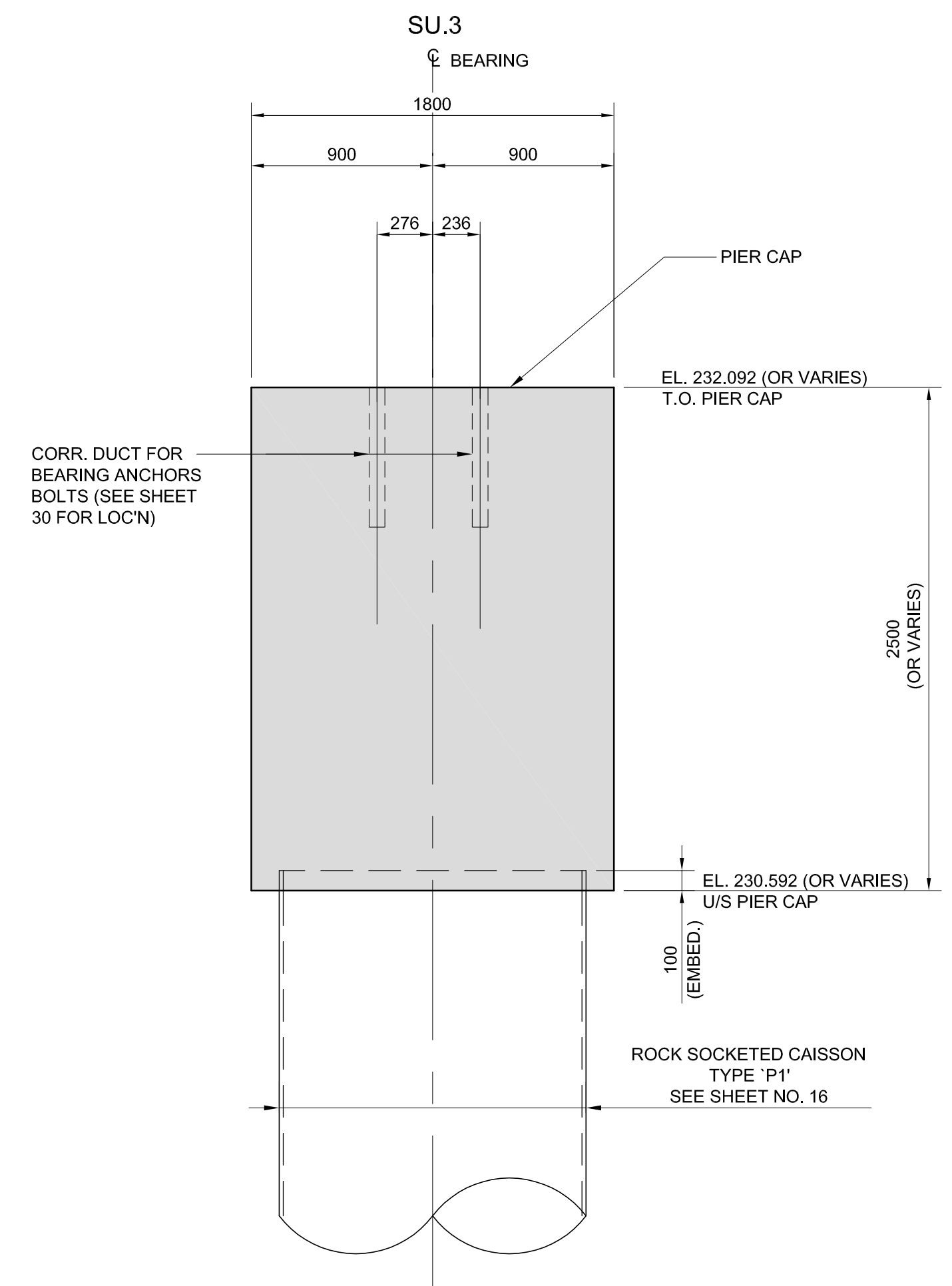
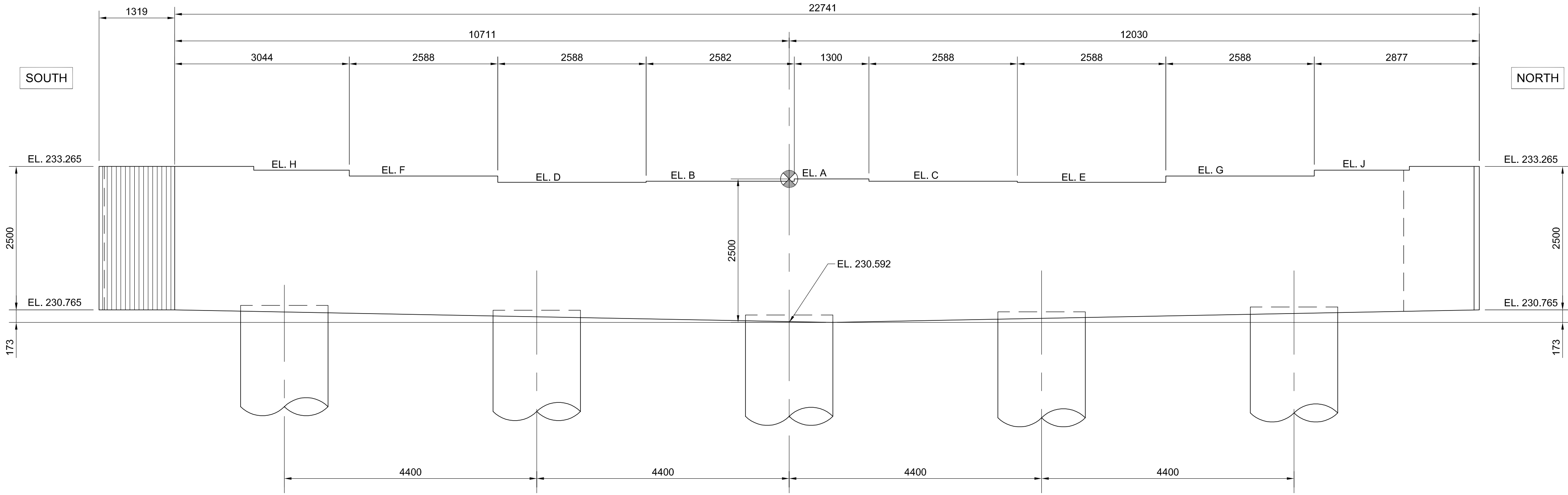


PLAN
SCALE 1:50



SECTION
SCALE 1:25



ELEVATION
SCALE 1:50

TABLE OF ELEVATIONS									
PIER	A	B	C	D	E	F	G	H	J
SU-3	233.092	233.070	233.073	233.026	233.034	233.179	233.196	233.225	233.245

NOTE:
1. ALL EXPOSED EDGES TO BE 20mm CHAMFER UNLESS NOTED OTHERWISE.



LOCATION UNDERGROUND STRUCTURES SUPV. U/G STRUCTURES COMMITTEE DATE APPROVED BY NOTE: LOCATION OF UNDERGROUND STRUCTURES AS SHOWN ARE BASED ON THE BEST INFORMATION AVAILABLE BUT NO GUARANTEE IS GIVEN THAT ALL EXISTING UTILITIES ARE SHOWN OR THAT THE GIVEN LOCATIONS ARE EXACT. CONFIRMATION OF EXISTENCE AND EXACT LOCATION OF ALL SERVICES MUST BE OBTAINED FROM THE INDIVIDUAL UTILITIES BEFORE PROCEEDING WITH CONSTRUCTION.	DESIGNED BY: FAK DRAWN BY: NBG CHECKED BY: SSR APPROVED BY: DPK HOR. SCALE: AS NOTED VERTICAL: AS NOTED		ENGINEER'S SEAL PROVINCE OF MANITOBA ORIGINAL STAMPED BY S.S. RIHAL 2010/05/14 REGISTERED PROFESSIONAL ENGINEER		SOUTHWEST RAPID TRANSIT CORRIDOR - STAGE 1 OSBORNE STATION & ASSOCIATED WORKS PIER SU-3 CONCRETE	CITY DRAWING NUMBER: B237-10- 23 SHEET 23 OF 121 CONSULTANT DRAWING NUMBER: C5-S1108-T
1 ISSUED FOR TENDER 10/05/14 SSR NO. REVISIONS DATE BY	RELEASED FOR CONSTRUCTION ORIGINAL SIGNED BY RANDY FINGAS DATE 2010/05/14	CONSULTANT PROJECT NO. 088813	THE CITY OF WINNIPEG TRANSIT DEPARTMENT	SOUTHWEST RAPID TRANSIT CORRIDOR - STAGE 1 OSBORNE STATION & ASSOCIATED WORKS	PIER SU-3 CONCRETE	CITY DRAWING NUMBER: B237-10- 23 SHEET 23 OF 121 CONSULTANT DRAWING NUMBER: C5-S1108-T