

PLAN
SCALE 1:50

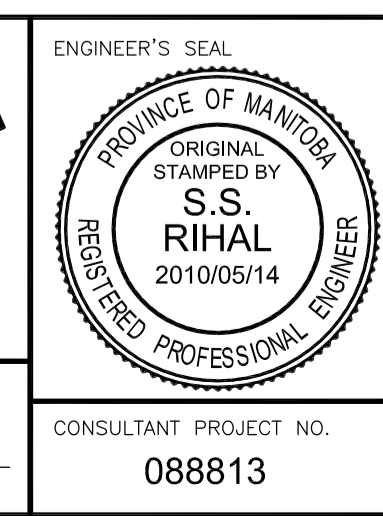
- NOTES**
1. IN THE EVENT THAT MANITOBA HYDRO REQUIRES THEIR EXISTING TRANSFORMER TO BE REPLACED DURING CONSTRUCTION, THE CONTRACTOR MAY BE REQUIRED TO MAKE THE AREA WITHIN THE CONSTRUCTION AREA AVAILABLE TO HYDRO TO FACILITATE THE REMOVAL AND REINSTALLATION OF A NEW TRANSFORMER.
 2. THE NEW SECURITY FENCE SHALL BE INSTALLED PRIOR TO ANY CONSTRUCTION TAKING PLACE WEST OF OSBORNE STREET.



LOCATION UNDERGROUND	APPROVED STRUCTURES
SUPV. U/G STRUCTURES COMMITTEE	DATE
NOTE: LOCATION OF UNDERGROUND STRUCTURES AS SHOWN ARE BASED ON THE BEST INFORMATION AVAILABLE BUT NO GUARANTEE IS GIVEN THAT ALL EXISTING UTILITIES ARE SHOWN OR THAT THE GIVEN LOCATIONS ARE EXACT. CONFIRMATION OF EXISTENCE AND EXACT LOCATION OF ALL SERVICES MUST BE OBTAINED FROM THE INDIVIDUAL UTILITIES BEFORE PROCEEDING WITH CONSTRUCTION.	

B.M. ELEV.	654265 (633392.694, 5525026.192) 232.518
DESIGNED BY	FAK
DRAWN BY	NBG
CHECKED BY	SSR
APPROVED BY	DPK
HOR. SCALE	
VERTICAL	
1 ISSUED FOR TENDER	10/05/14 DPK
NO. REVISIONS	DATE BY
	DATE 2010/05/14

DESIGNED BY	FAK
DRAWN BY	NBG
CHECKED BY	SSR
APPROVED BY	DPK
HOR. SCALE	
VERTICAL	
1 ISSUED FOR TENDER	10/05/14 DPK
NO. REVISIONS	DATE BY
	DATE 2010/05/14



THE CITY OF WINNIPEG TRANSIT DEPARTMENT	
SOUTHWEST RAPID TRANSIT CORRIDOR - STAGE 1	
OSBORNE STATION & ASSOCIATED WORKS	
WEST END RETAINING WALLS - LAYOUT	
CITY DRAWING NUMBER	B237-10-46
SHEET OF	46 OF 121
CONSULTANT DRAWING NUMBER	C5-S1131-T

G:\CAD\088813\Contract\Contract 5- Osborne Station\Current\Bridges\C5-S1131-T-MANHYDRO_SIDE.dwg