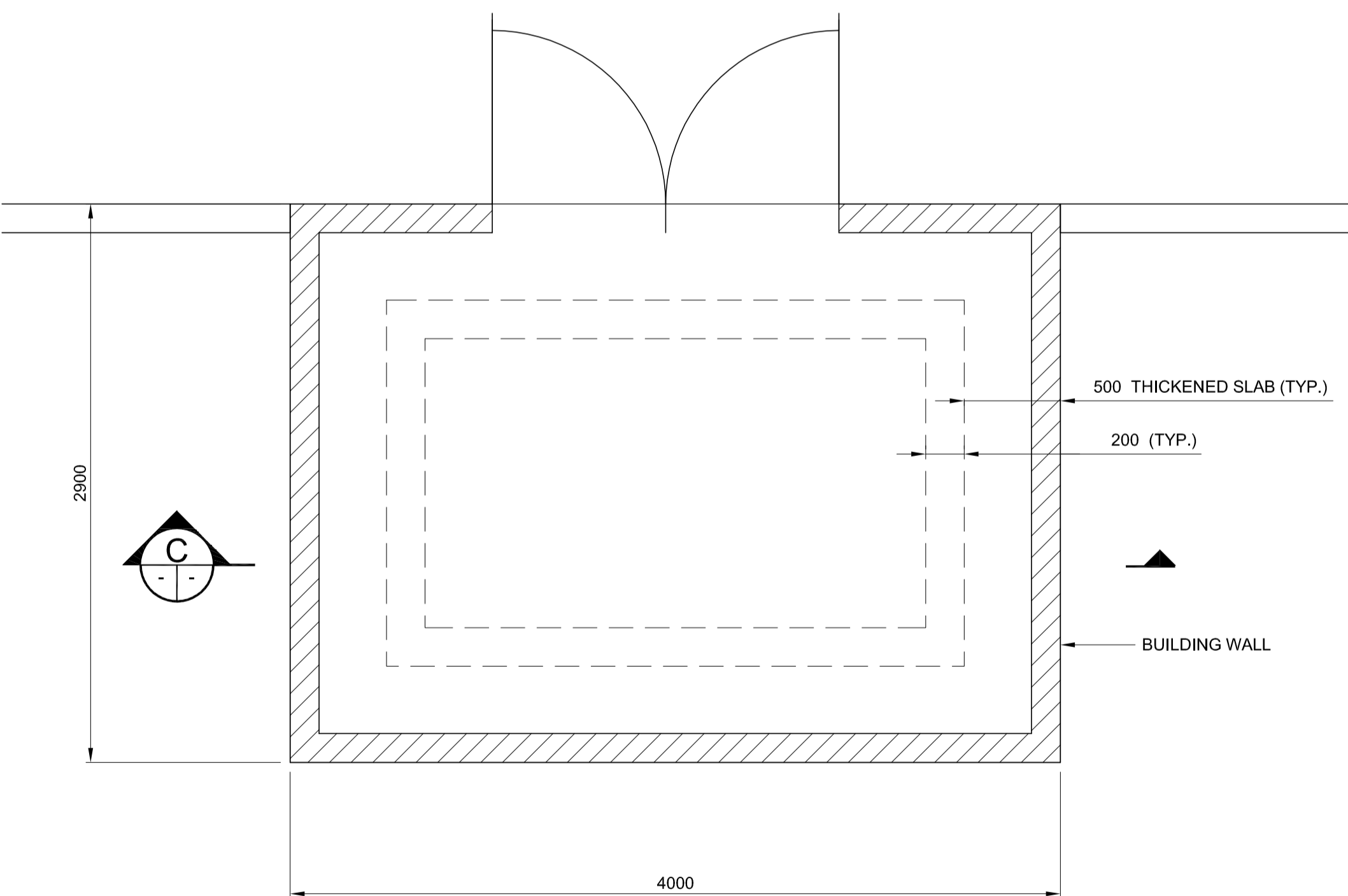
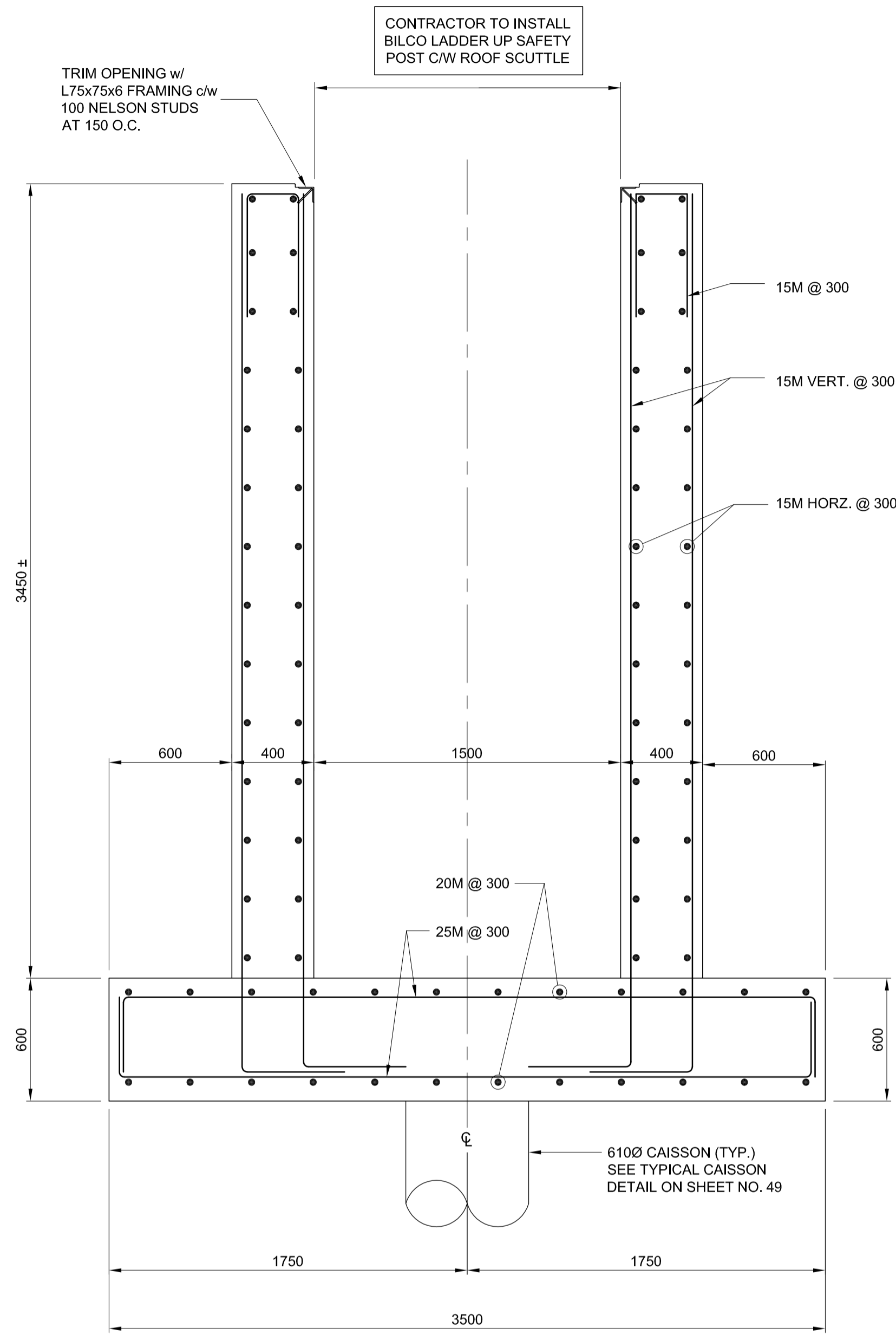


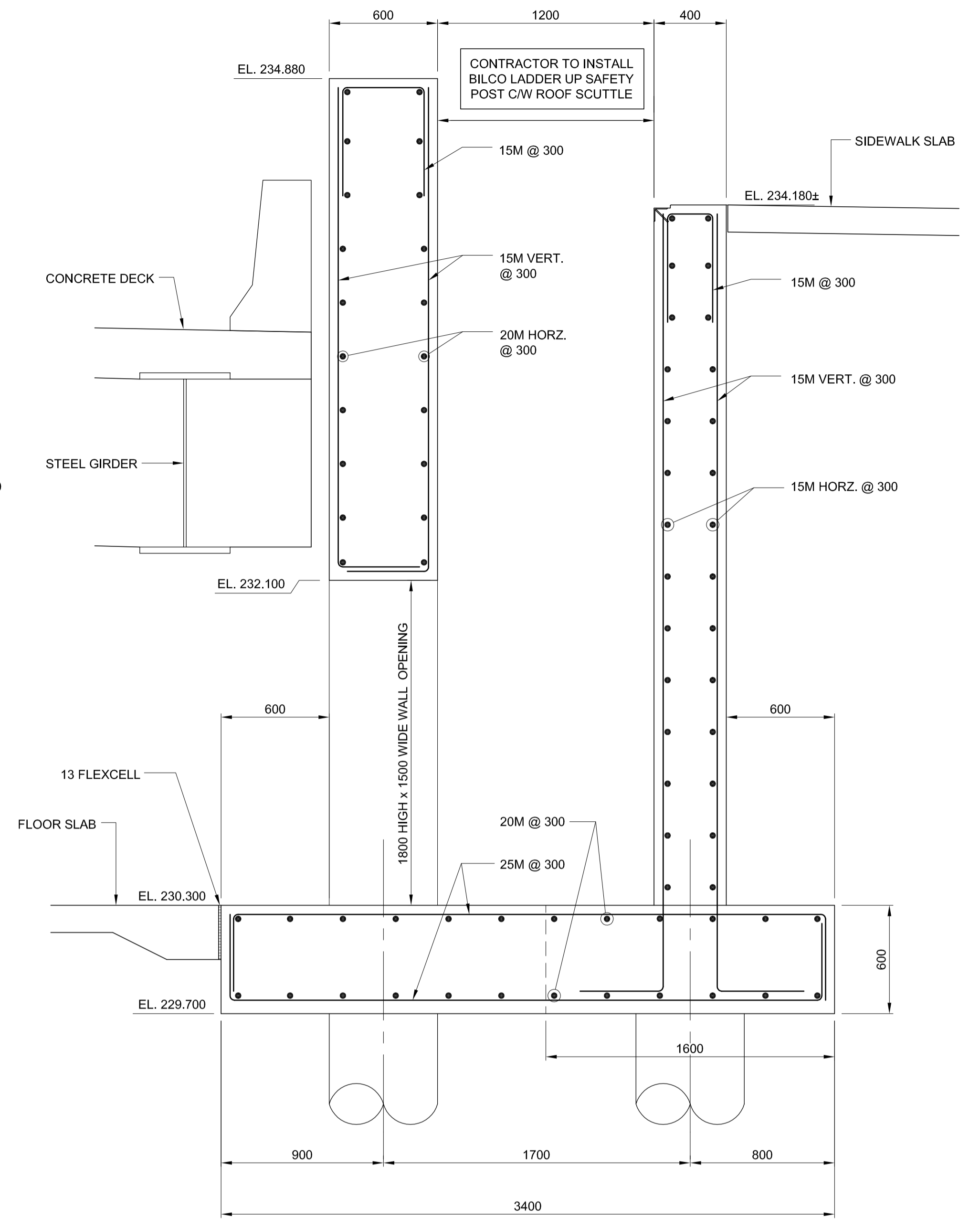
PLAN-ACCESS HATCH
SCALE 1:25



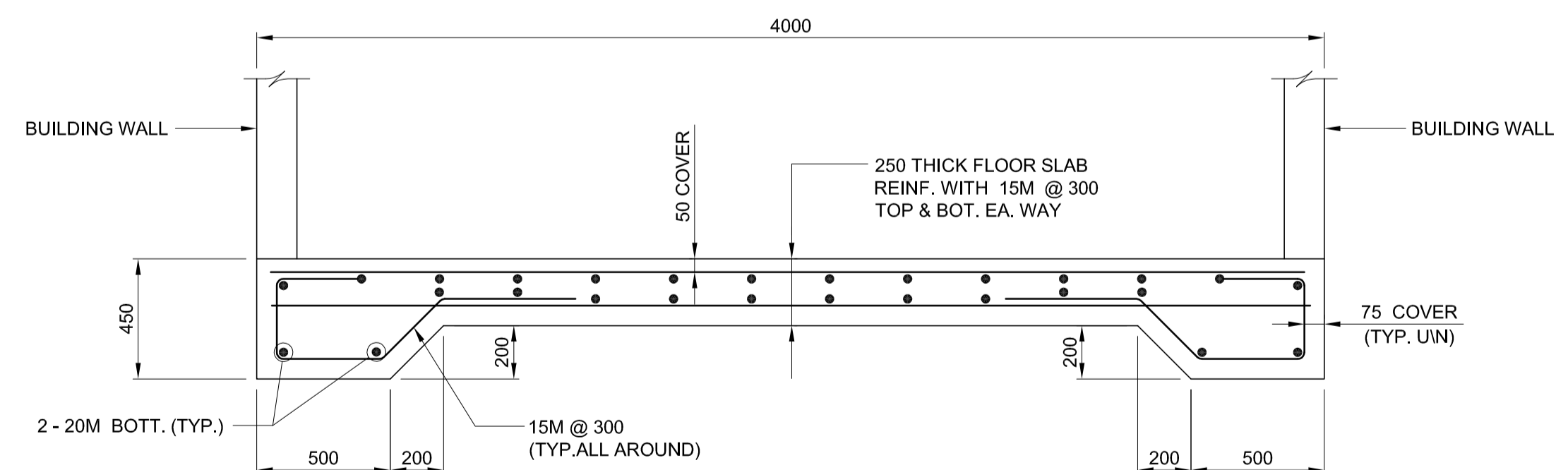
PLAN-CONTROL BUILDING FOUNDATION
SCALE 1:25



SECTION A
SCALE 1:20



SECTION B
SCALE 1:20



SECTION C
SCALE 1:20



LOCATION UNDERGROUND STRUCTURES SUPV. U/G STRUCTURES COMMITTEE DATE	APPROVED DATE COMMITTEE	B.M. ELEV. 654265 (633392.694, 5525026.192) 232.518	DESIGNED BY FAK DRAWN BY NBG /AJP CHECKED BY SSR APPROVED BY DPK		ENGINEER'S SEAL PROVINCE OF MANITOBA ORIGINAL STAMPED BY S.S. RIHAL 2010/05/14 REGISTERED PROFESSIONAL ENGINEER		THE CITY OF WINNIPEG TRANSIT DEPARTMENT
NOTE: LOCATION OF UNDERGROUND STRUCTURES AS SHOWN ARE BASED ON THE BEST INFORMATION AVAILABLE BUT NO GUARANTEE IS GIVEN THAT ALL EXISTING UTILITIES ARE SHOWN OR THAT THE GIVEN LOCATIONS ARE EXACT. CONFIRMATION OF EXISTENCE AND EXACT LOCATION OF ALL SERVICES MUST BE OBTAINED FROM THE INDIVIDUAL UTILITIES BEFORE PROCEEDING WITH CONSTRUCTION.			HOR. SCALE VERTICAL DATE 2010/05/14	RELEASED FOR CONSTRUCTION ORIGINAL SIGNED BY RANDY FINGAS DATE 2010/05/14	CONSULTANT PROJECT NO. 088813	SOUTHWEST RAPID TRANSIT CORRIDOR - STAGE 1 OSBORNE STATION & ASSOCIATED WORKS	CITY DRAWING NUMBER B237-10- 50 SHEET OF 50 OF 121
1 ISSUED FOR TENDER 10/05/14 DPK			NO. REVISIONS DATE BY	DATE 2010/05/14	DATE 2010/05/14	WEST END - CONTROL BUILDING & ACCESS HATCH	CONSULTANT DRAWING NUMBER C5-S1135-T

G:\CAD\088813\Contract\Contract 5- Osburne Station\Current\Bridges\C5-S1135-Maint. Bldg. and access.dwg