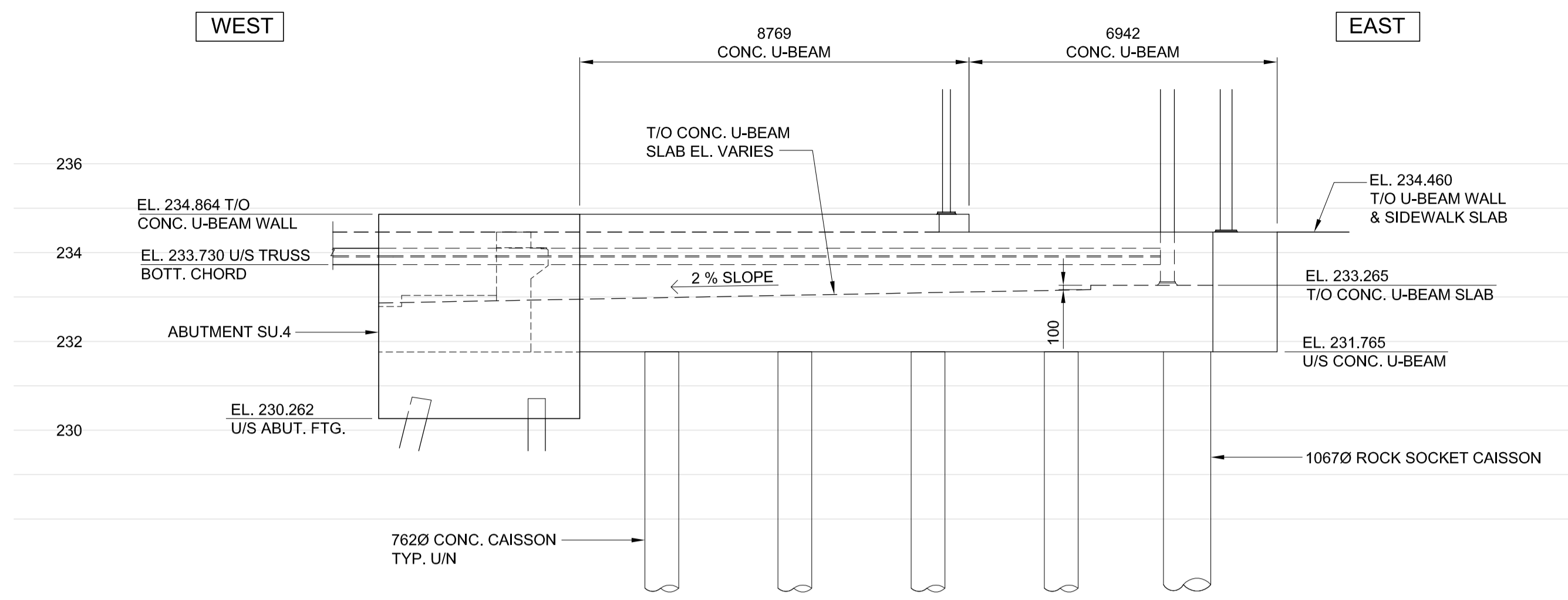
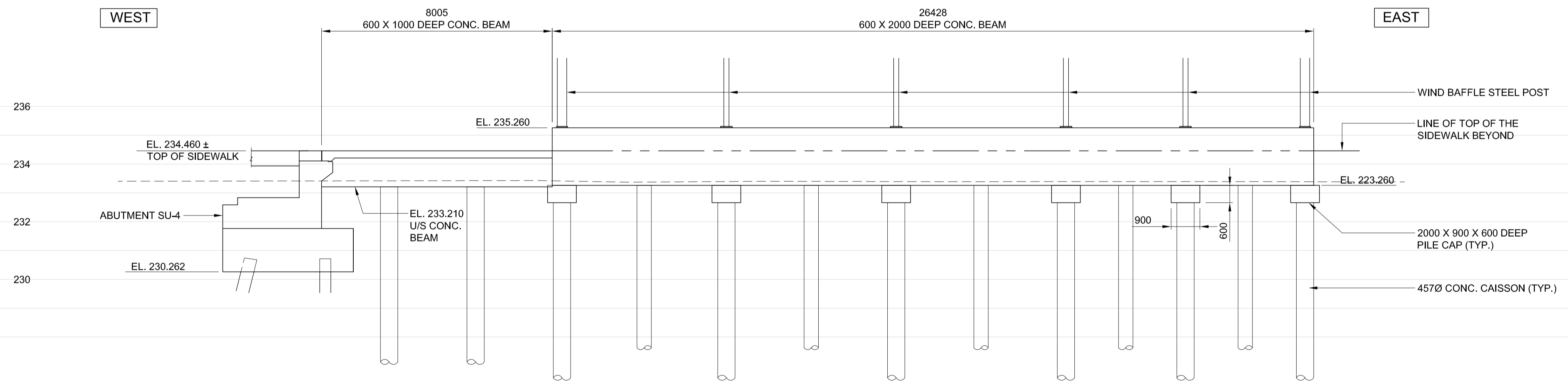


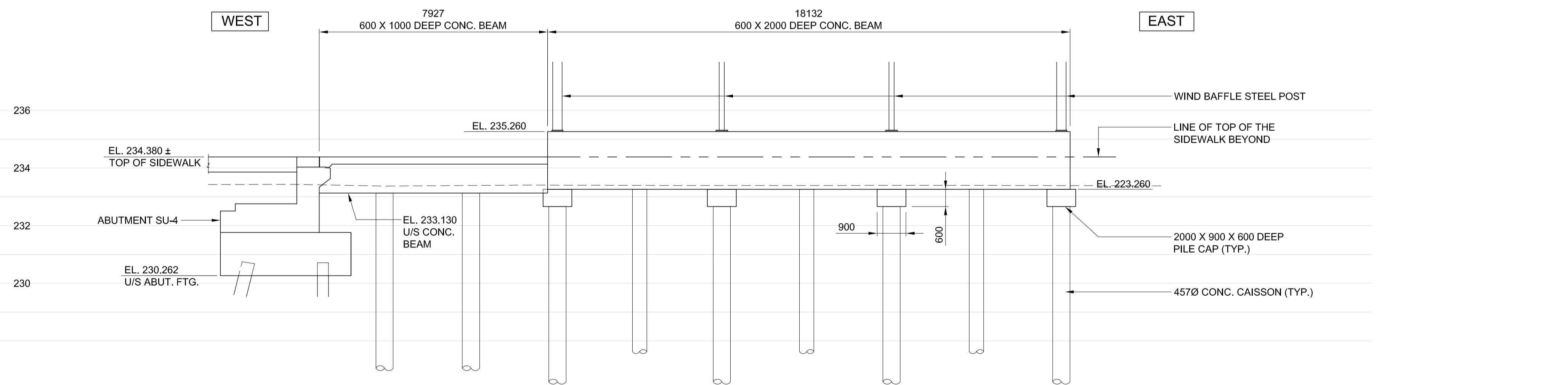
NORTH EAST CONCRETE U-BEAM (TRENCH)
ELEVATION LOOKING NORTH
SCALE: 1:100



SOUTH EAST CONCRETE U-BEAM (TRENCH)
ELEVATION LOOKING NORTH
SCALE: 1:100



SECTION F
SCALE 1:100



SECTION G
SCALE 1:100



LOCATION UNDERGROUND STRUCTURES SUPV. U/G STRUCTURES COMMITTEE DATE NOTE: LOCATION OF UNDERGROUND STRUCTURES AS SHOWN ARE BASED ON THE BEST INFORMATION AVAILABLE BUT NO GUARANTEE IS GIVEN THAT ALL EXISTING UTILITIES ARE SHOWN OR THAT THE GIVEN LOCATIONS ARE EXACT. CONFIRMATION OF EXISTENCE AND EXACT LOCATION OF ALL SERVICES MUST BE OBTAINED FROM THE INDIVIDUAL UTILITIES BEFORE PROCEEDING WITH CONSTRUCTION.	B.M. ELEV. 654265 (633392.694, 5525026.192) 232.518 DESIGNED BY FAK DRAWN BY NBG CHECKED BY SSR APPROVED BY DPK HOR. SCALE VERTICAL DATE 2010/05/14	 RELEASED FOR CONSTRUCTION ORIGINAL SIGNED BY RANDY FINGAS DATE 2010/05/14	ENGINEER'S SEAL CONSULTANT PROJECT NO. 088813	 THE CITY OF WINNIPEG TRANSIT DEPARTMENT SOUTHWEST RAPID TRANSIT CORRIDOR - STAGE 1 OSBORNE STATION & ASSOCIATED WORKS EAST END RETAINING WALLS - SECTIONS & DETAILS 2 OF 4	CITY DRAWING NUMBER B237-10- 58 SHEET OF 58 121 CONSULTANT DRAWING NUMBER C5-S1143-T
---	---	---	--	---	--

G:\CAD\088813\Contract\Contract 5-Osborne Station\Current\Station\Bridge\C5-S1143-EAST-STATION_SECTION 2 of 4.dwg