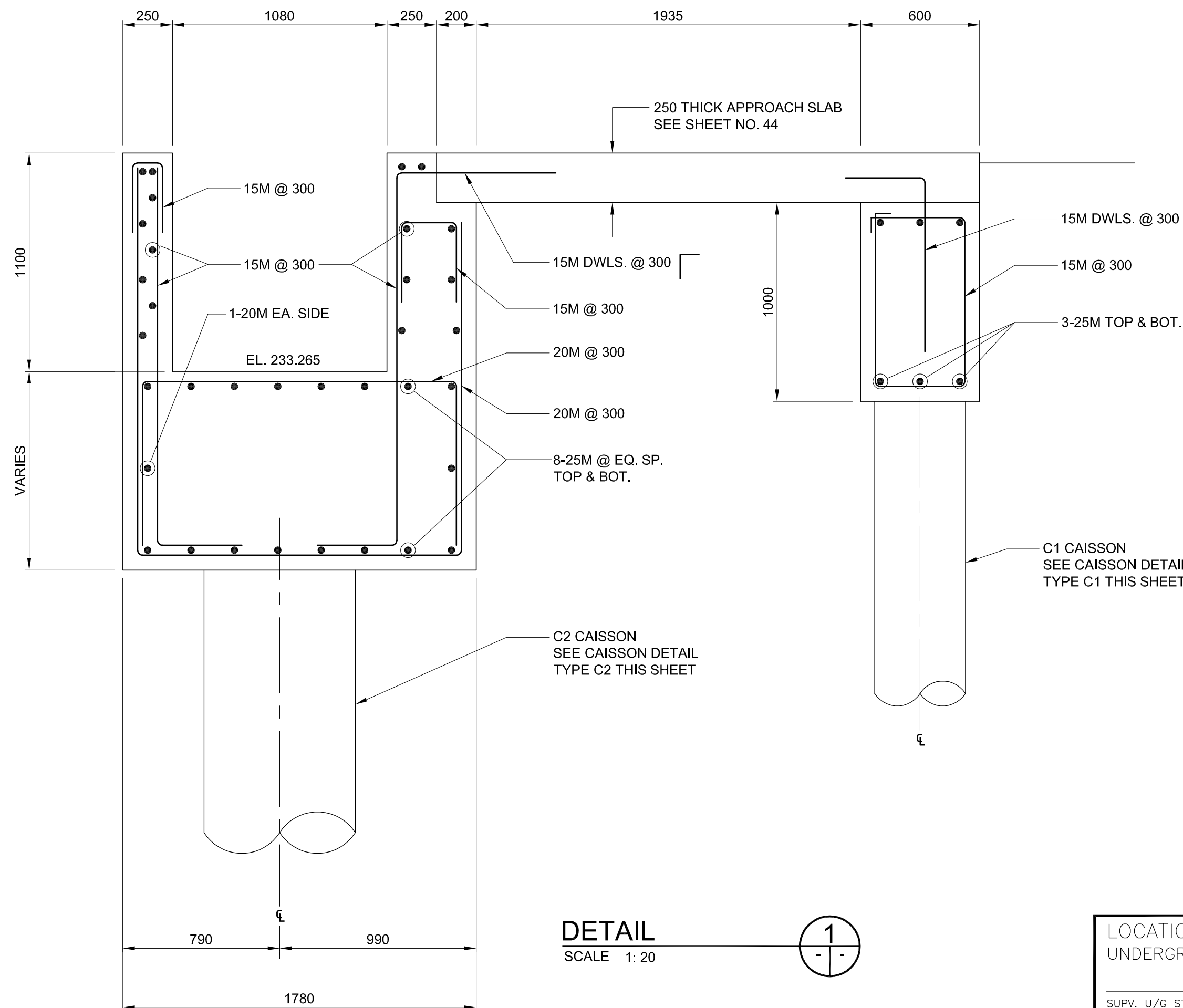
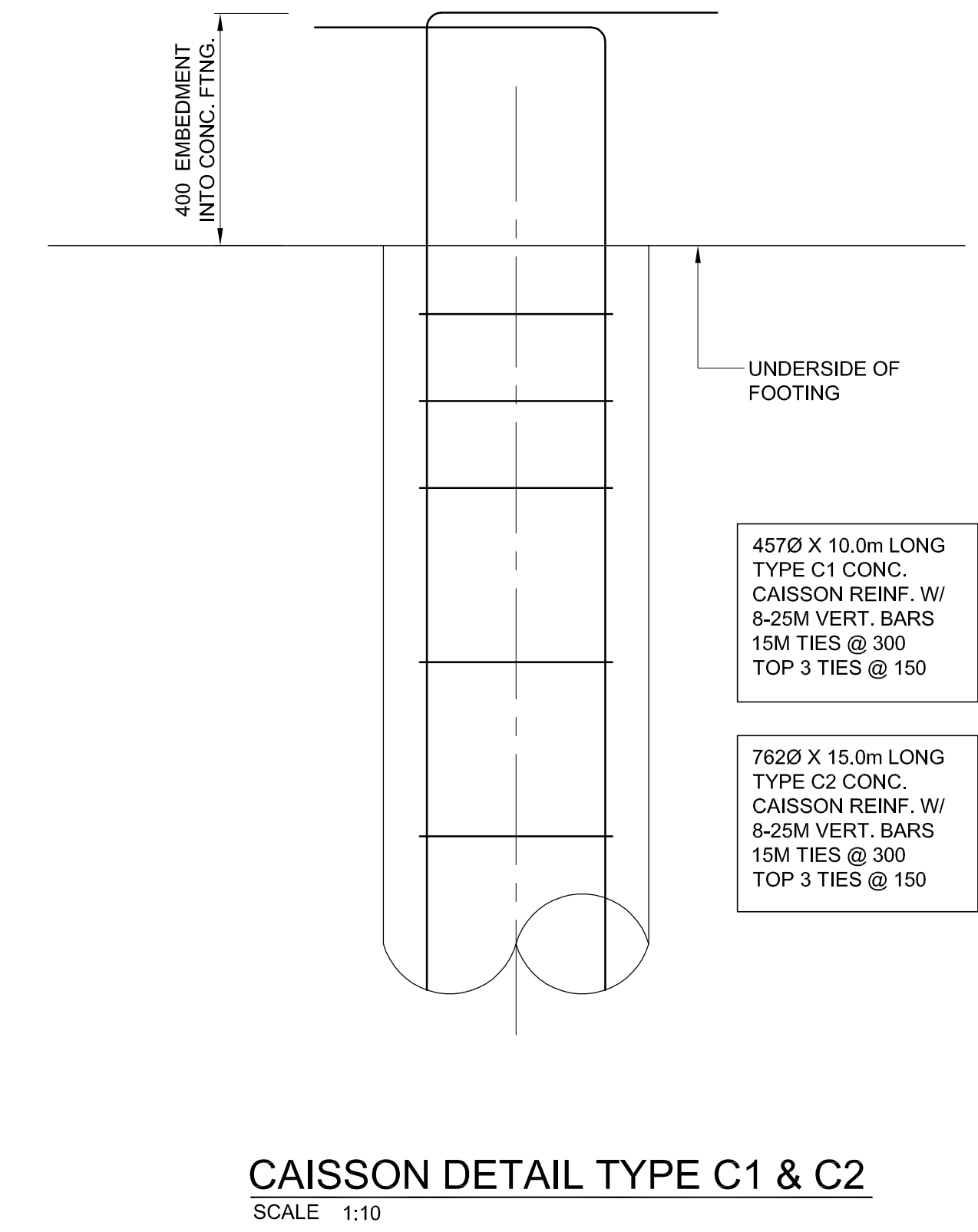
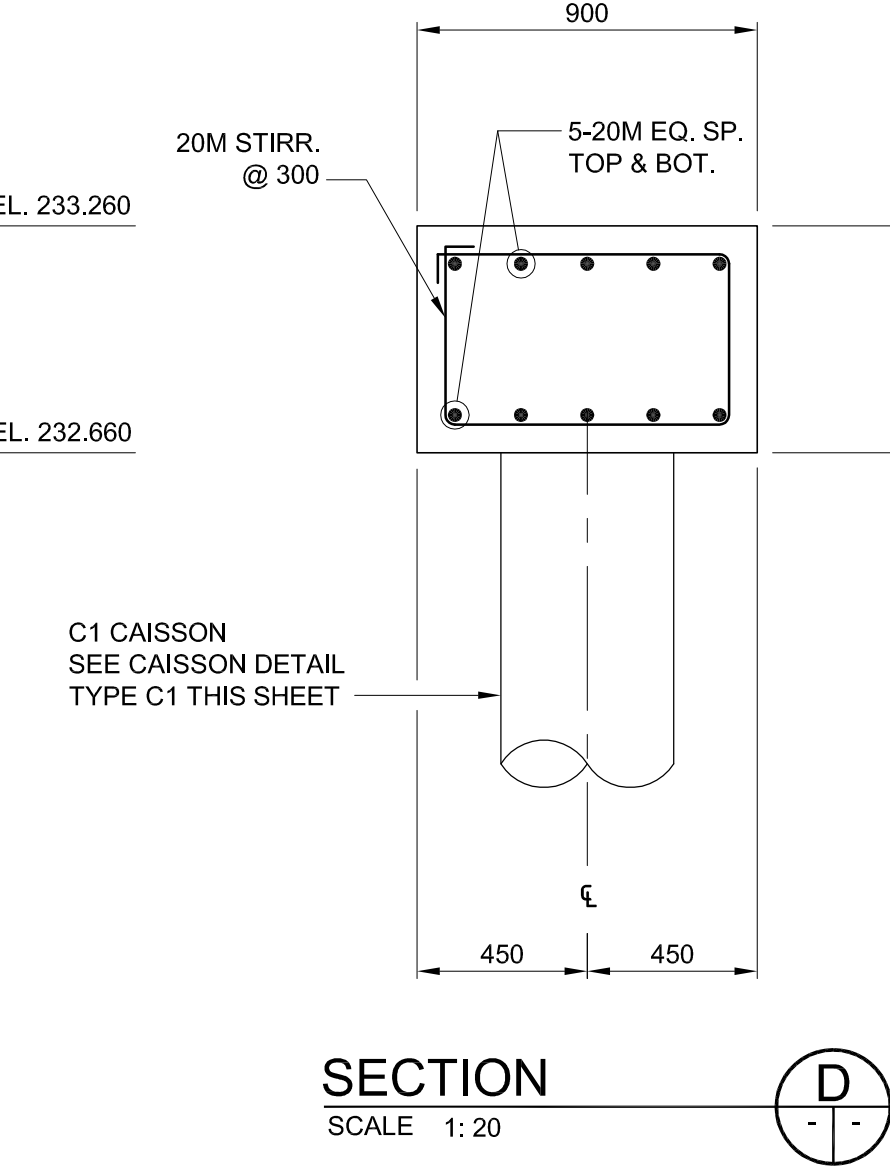


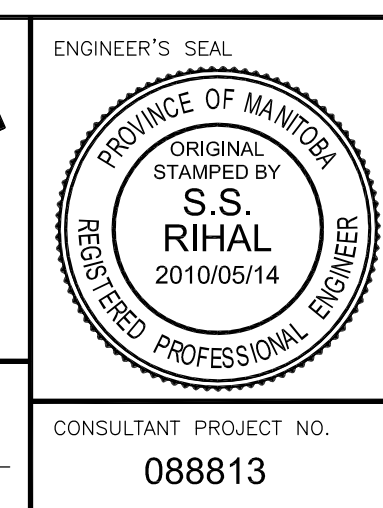
NOTE:  
7-20M @ 150 VERT. FOR  
900 WIDTH AT COLUMN  
LOCATIONS



LOCATION UNDERGROUND	APPROVED STRUCTURES	B.M. ELEV.	654265 (633392.694, 5525026.192) 232.518	DESIGNED BY	FAK
SUPPLY U/G STRUCTURES COMMITTEE	DATE			DRAWN BY	NBG
				CHECKED BY	SSR
				APPROVED BY	DPK
				HOR. SCALE	
				VERTICAL	
				1 ISSUED FOR TENDER	10/05/14 DPK
				NO. REVISIONS	DATE BY

NOTE:  
LOCATION OF UNDERGROUND STRUCTURES AS SHOWN ARE BASED ON THE BEST INFORMATION AVAILABLE BUT NO GUARANTEE IS GIVEN THAT ALL EXISTING UTILITIES ARE SHOWN OR THAT THE GIVEN LOCATIONS ARE EXACT. CONFIRMATION OF EXISTENCE AND EXACT LOCATION OF ALL SERVICES MUST BE OBTAINED FROM THE INDIVIDUAL UTILITIES BEFORE PROCEEDING WITH CONSTRUCTION.

RELEASER FOR CONSTRUCTION	DATE	2010/05/14
ORIGINAL SIGNED BY RANDY FINGAS	DATE	2010/05/14



**THE CITY OF WINNIPEG**  
TRANSIT DEPARTMENT

Winnipeg

SOUTHWEST RAPID TRANSIT CORRIDOR - STAGE 1  
OSBORNE STATION & ASSOCIATED WORKS

EAST END RETAINING WALLS - SECTIONS & DETAILS 4 OF 4

CITY DRAWING NUMBER: B237-10-60  
SHEET 60 OF 121  
CONSULTANT DRAWING NUMBER: C5-S1145-T

CONSULTANT PROJECT NO. 088813

G:\CAD\088813\Contract\Contract 5-Osborne Station\Current\Bridge\C5-S1138- EAST STATION SECTION 2.dwg