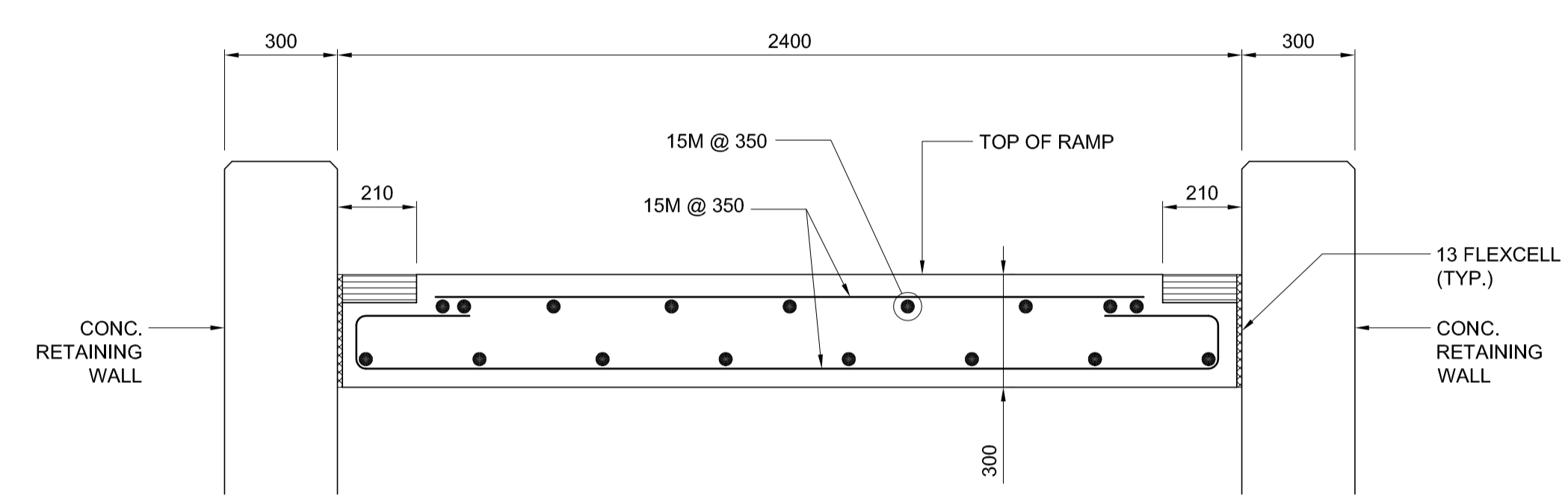
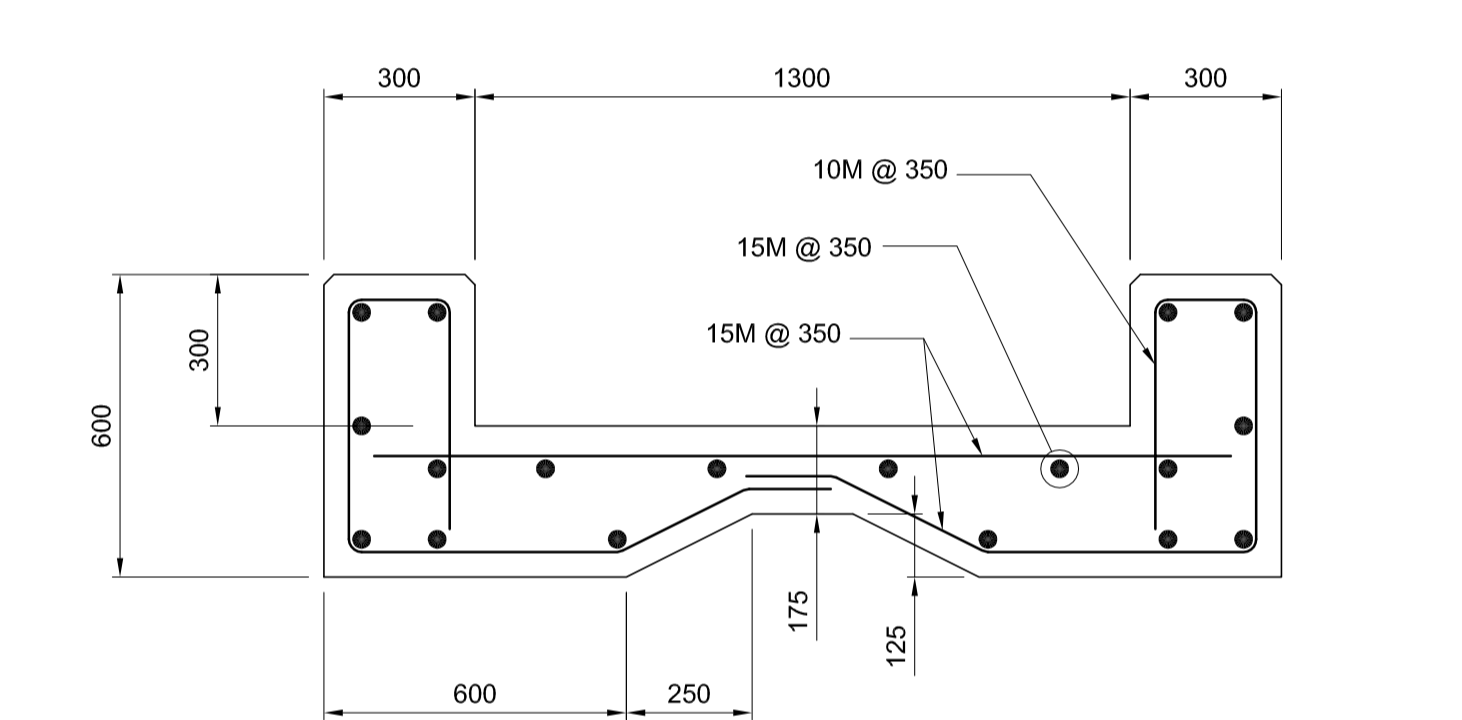


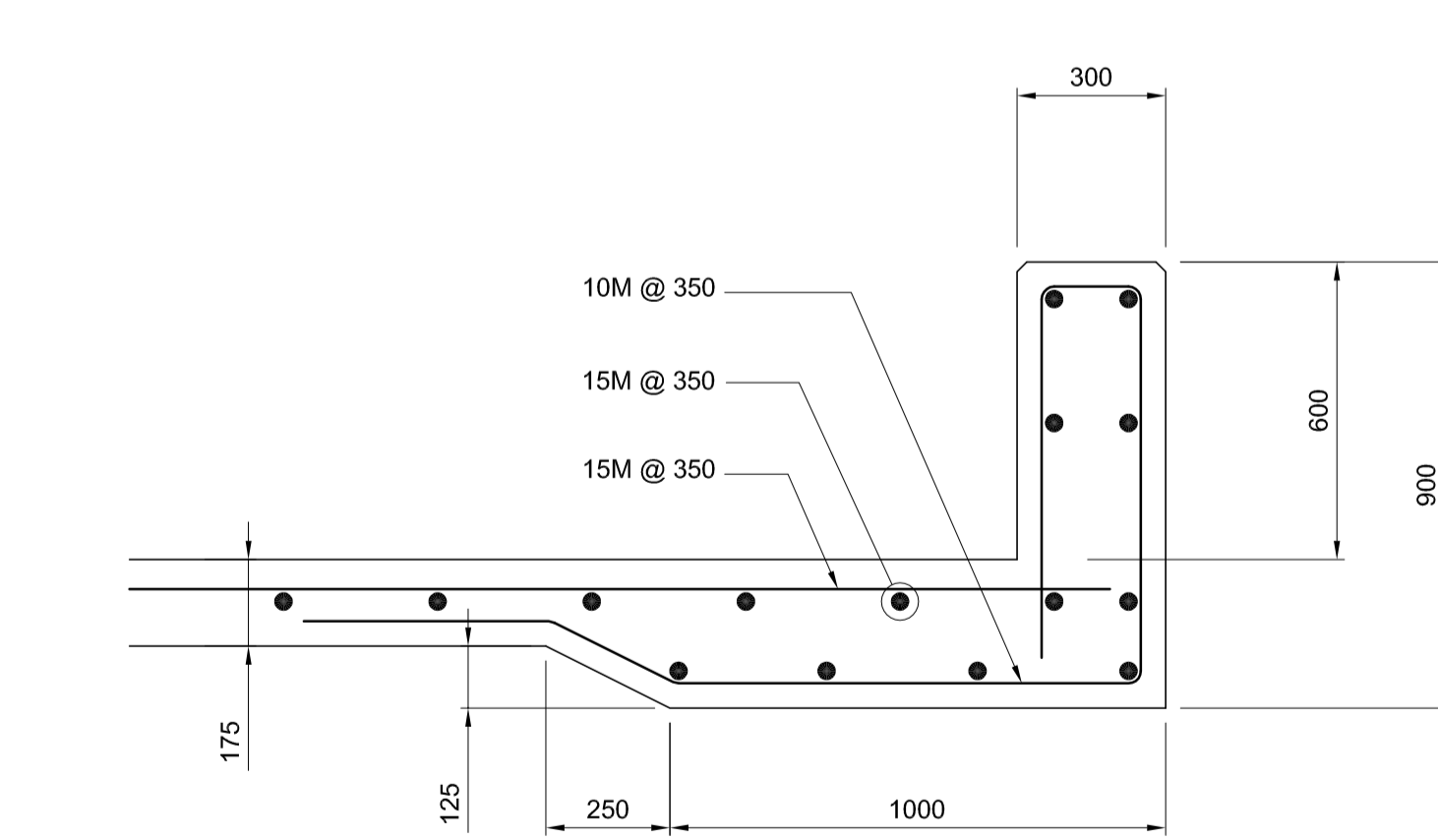
**TYPICAL SLAB DETAIL**  
SCALE 1:15



**TYPICAL CONCRETE SLAB RAMP DETAIL**  
SCALE 1:15



**SECTION A**  
SCALE 1:15



**SECTION B**  
SCALE 1:15

**FOUNDATION PLAN**  
SCALE 1:75



|  |                             |   |   |   |                               |  |   |   |
|--|-----------------------------|---|---|---|-------------------------------|--|---|---|
| LOCATION UNDERGROUND STRUCTURES<br>SUPV. U/G STRUCTURES COMMITTEE DATE   | APPROVED STRUCTURES<br>DATE | B.M. ELEV. 654265 (633392.694, 5525026.192) 232.518 | DESIGNED BY FAK<br>DRAWN BY NBG /AJP<br>CHECKED BY SSR<br>APPROVED BY DPK<br>HOR. SCALE VERTICAL<br>DATE 2010/05/14 |   |                               |  | <b>THE CITY OF WINNIPEG</b><br>TRANSIT DEPARTMENT<br>SOUTHWEST RAPID TRANSIT CORRIDOR - STAGE 1<br>OSBORNE STATION & ASSOCIATED WORKS<br>EAST SIDE PEDESTRIAN PLAZA - FOUNDATION & FRAMING LAYOUT | CITY DRAWING NUMBER B237-10-63<br>SHEET 63 OF 121<br>CONSULTANT DRAWING NUMBER C5-S1148-T |
| NOTE:<br>LOCATION OF UNDERGROUND STRUCTURES AS SHOWN ARE BASED ON THE BEST INFORMATION AVAILABLE BUT NO GUARANTEE IS GIVEN THAT ALL EXISTING UTILITIES ARE SHOWN OR THAT THE GIVEN LOCATIONS ARE EXACT. CONFIRMATION OF EXISTENCE AND EXACT LOCATION OF ALL SERVICES MUST BE OBTAINED FROM THE INDIVIDUAL UTILITIES BEFORE PROCEEDING WITH CONSTRUCTION. |                             | 1 ISSUED FOR TENDER 10/05/14 DPK                    | NO. REVISIONS DATE BY   | RELEASED FOR CONSTRUCTION ORIGINAL SIGNED BY RANDY FINGAS DATE 2010/05/14 | CONSULTANT PROJECT NO. 088813 |  |   |   |

G:\CAD\088813\Contract\Contract 5-Osborne Station\Current\Bridges\C5-S1148-EAST-PLAZA FRAMING.dwg