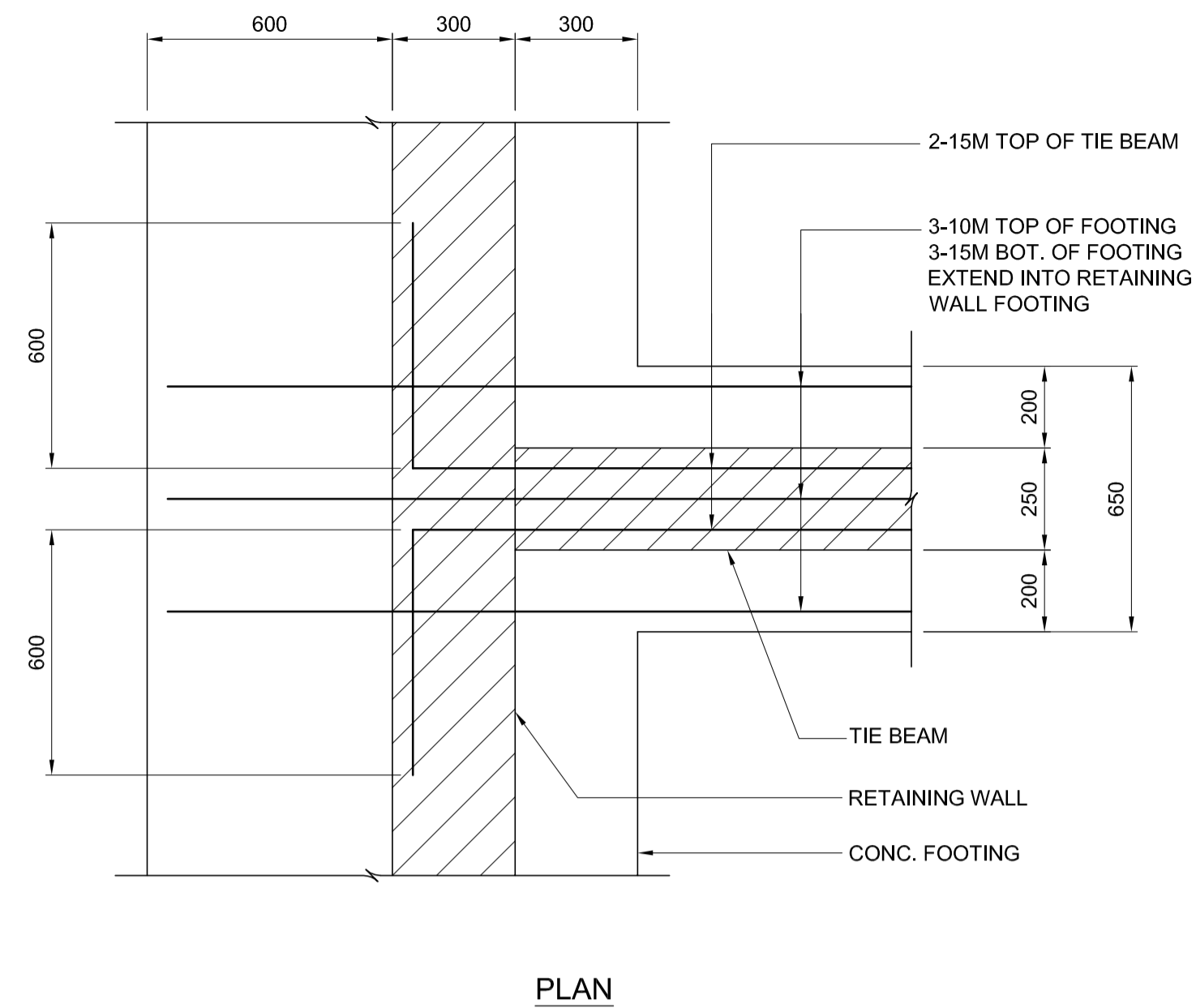
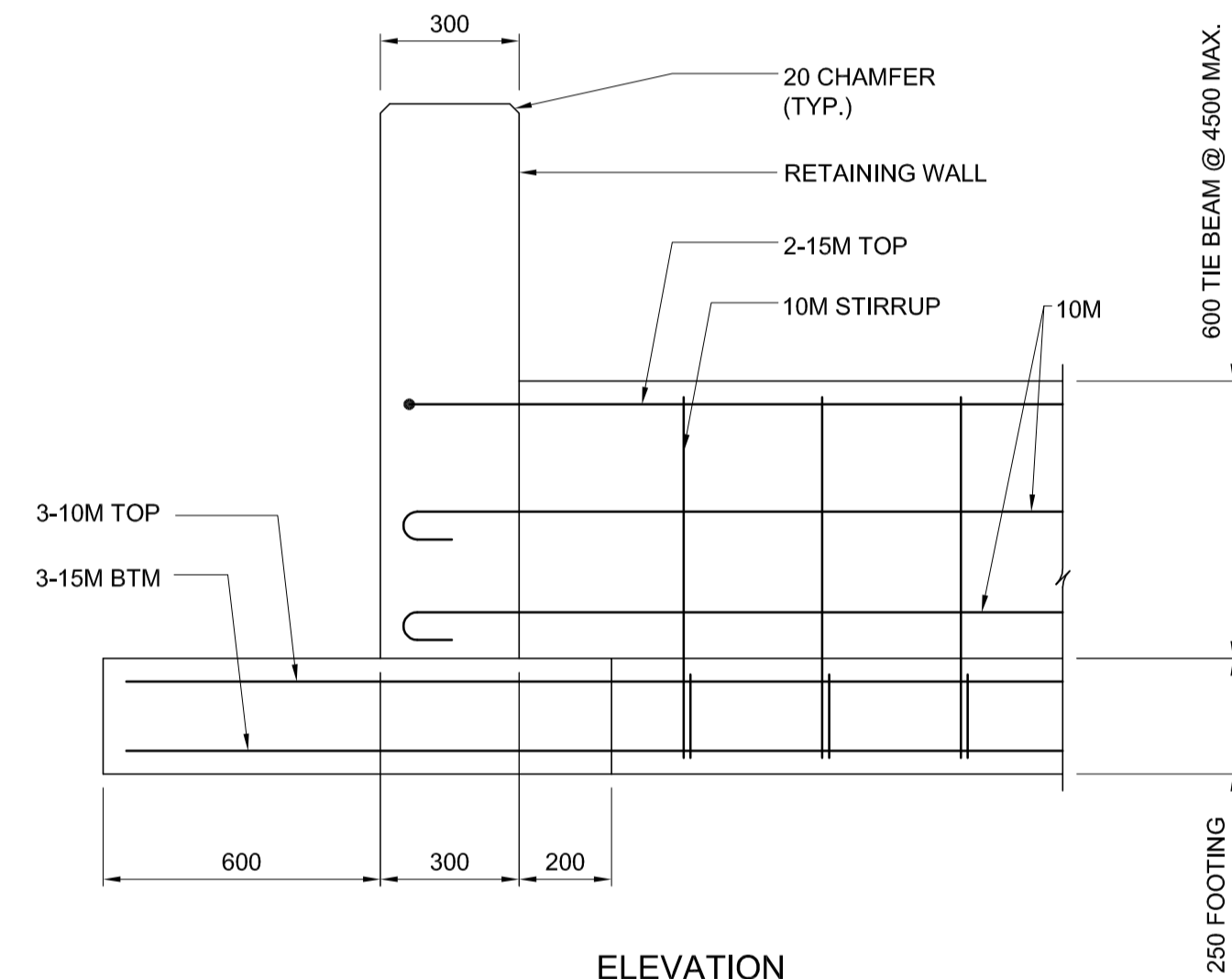


PARTIAL FRAMING PLAN - PLANTER / RAMP
SCALE 1:25



PLAN



ELEVATION

RETAINING WALL / TIE BEAM REINFORCING
SCALE 1:15

G:\CAD\088813\Contract\Contract 5-Osborne Station\Current\Bridge\C5-S1141-EAST PLAZA DETAILS 1.dwg



LOCATION UNDERGROUND STRUCTURES	APPROVED STRUCTURES	B.M. ELEV.	654265 (633392.694, 5525026.192) 232.518	DESIGNED BY	FAK
SUPV. U/G STRUCTURES COMMITTEE	DATE			DRAWN BY	NBG /AJP
				CHECKED BY	SSR
				APPROVED BY	DPK
NOTE: LOCATION OF UNDERGROUND STRUCTURES AS SHOWN ARE BASED ON THE BEST INFORMATION AVAILABLE BUT NO GUARANTEE IS GIVEN THAT ALL EXISTING UTILITIES ARE SHOWN OR THAT THE GIVEN LOCATIONS ARE EXACT. CONFIRMATION OF EXISTENCE AND EXACT LOCATION OF ALL SERVICES MUST BE OBTAINED FROM THE INDIVIDUAL UTILITIES BEFORE PROCEEDING WITH CONSTRUCTION.					
1	ISSUED FOR TENDER	10/05/14	DPK	HOR. SCALE	VERTICAL
NO.	REVISIONS	DATE	BY	DATE	2010/05/14

RELEASER	RELEASED FOR CONSTRUCTION	DATE	2010/05/14
DESIGNED BY	FAK	DATE	2010/05/14
DRAWN BY	NBG /AJP		
CHECKED BY	SSR		
APPROVED BY	DPK		
HOR. SCALE	VERTICAL		
DATE	2010/05/14		

DILLON CONSULTING

RELEASED FOR CONSTRUCTION
ORIGINAL SIGNED BY RANDY FINGAS
DATE 2010/05/14

ENGINEER'S SEAL
PROVINCE OF MANITOBA
ORIGINAL STAMPED BY
S.S. RIHAL
2010/05/14
REGISTERED PROFESSIONAL ENGINEER

CONSULTANT PROJECT NO.
088813

THE CITY OF WINNIPEG
TRANSIT DEPARTMENT

Winnipeg

SOUTHWEST RAPID TRANSIT CORRIDOR - STAGE 1
OSBORNE STATION & ASSOCIATED WORKS

EAST SIDE PEDESTRIAN PLAZA - SECTIONS & DETAILS 1 OF 3

CITY DRAWING NUMBER
B237-10-64

SHEET 64 OF 121

CONSULTANT DRAWING NUMBER
C5-S1149-T