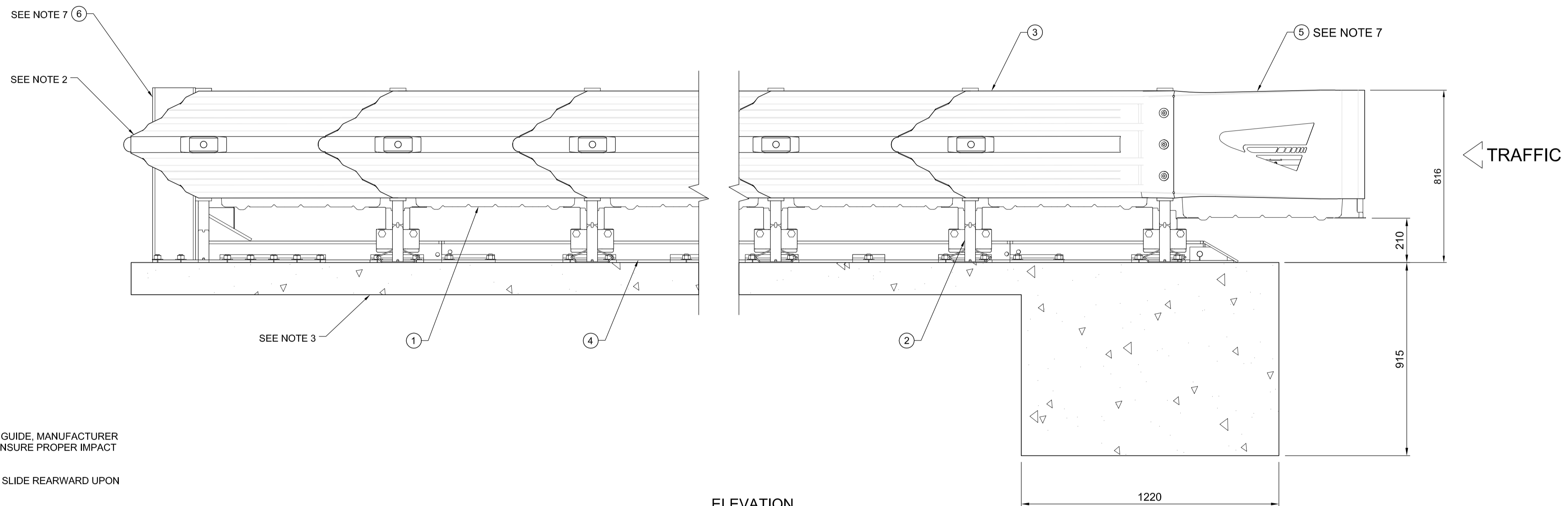


PLAN



ELEVATION
LEFT SIDE

- NOTES:
- IN COMPLIANCE WITH THE AASHTO 2002 ROADSIDE DESIGN GUIDE, MANUFACTURER RECOMMENDS REMOVAL OF ALL CURBS AND ISLANDS TO ENSURE PROPER IMPACT PERFORMANCE.
 - PROVISION SHALL BE MADE FOR REAR FENDER PANELS TO SLIDE REARWARD UPON IMPACT 762 [30.00] MIN.
 - 150 [6.00] MIN. REINFORCED 28 MPa [4000 PSI] P.C. CONCRETE PAD OR 200 [8.00] MIN. NON-REINFORCED 28MPa [4000 PSI] P.C. CONCRETE ROADWAY, MEASURING AT LEAST 3.66 m [12'-0"] WIDE BY 15.24 m [50'-0"] LONG.
 - SEE THE "QUADGUARD II SYSTEM PRODUCT MANUAL" FOR A DESCRIPTION OF ITS IMPACT PERFORMANCE CHARACTERISTICS AND DESIGN LIMITATIONS BEFORE PLACING A SYSTEM AT A GIVEN SITE. INFORMATION AND COPIES OF ABOVE MANUAL ARE AVAILABLE BY CALLING CUSTOMER SERVICE DEPARTMENT AT (888) 323-6374.
 - WHERE NECESSARY, THE CUSTOMER SHALL SUPPLY AN ADEQUATE TRANSITION FROM THE QUADGUARD II SYSTEM TO THE OBJECT BEING SHIELDED.
 - UNITS OF MEASUREMENT ARE MILLIMETERS [INCHES] UNLESS OTHERWISE NOTED.
 - BACKUP, MONORAIL, AND NOSE ASSEMBLIES ARE NOT INCLUDED IN MODEL NUMBER, ORDER SEPARATELY.
 - THE QUADGUARD II SYSTEM HAS BEEN TESTED TO NCHRP 350.

KEY	1	CARTRIDGE	4	MONORAIL
	2	DIAPHRAGM	5	NOSE ASSEMBLY
	3	FENDER PANEL	6	BACKUP

BAYS	910 [24"] WIDTH		762 [30"] WIDTH		914 [36"] WIDTH		1220 [48"] WIDTH		SYSTEM LENGTH	EFFECTIVE LENGTH	PAD LENGTH	MAX DESIGN SPEED	NO. OF CARTRIDGES	
	MODEL NO.	MODEL NO.	MODEL NO.	MODEL NO.	m	ft-in	m	ft-in					Km/h	[MPH]
1	QG24024	QG24030	QG24036	QG24048	2.13	[7'-0"]	1.73	[5'-8"]	2.74	[9'-0"]	40	[25]	2	0
2	QG27024	QG27030	QG27036	QG27048	3.05	[10'-0"]	2.64	[8'-8"]	2.74	[9'-0"]	70	[43]	2	1
3	QG28024	QG28030	QG28036	QG28048	3.96	[13'-0"]	3.56	[11'-8"]	3.66	[12'-0"]	80	[50]	2	2
4	QG29024	QG29030	QG29036	QG29048	4.87	[16'-0"]	4.47	[14'-8"]	4.57	[15'-0"]	90	[56]	3	2
5	QG210024	QG210030	QG210036	QG210048	5.79	[19'-0"]	5.38	[17'-8"]	5.49	[18'-0"]	100	[62]	3	3
6	QG210524	QG210530	QG210536	QG210548	6.71	[22'-0"]	6.30	[20'-8"]	6.40	[21'-0"]	105	[65]	4	3
7	QG211024	QG211030	QG211036	QG211048	7.63	[25'-0"]	7.21	[23'-8"]	7.32	[24'-0"]	110	[68]	4	4
8	QG211524	QG211530	QG211536	QG211548	8.53	[28'-0"]	8.13	[26'-8"]	8.23	[27'-0"]	115	[71]	4	5
9	QG212024	QG212030	QG212036	QG212048	9.45	[31'-0"]	9.04	[29'-8"]	9.14	[30'-0"]	120	[75]	4	6

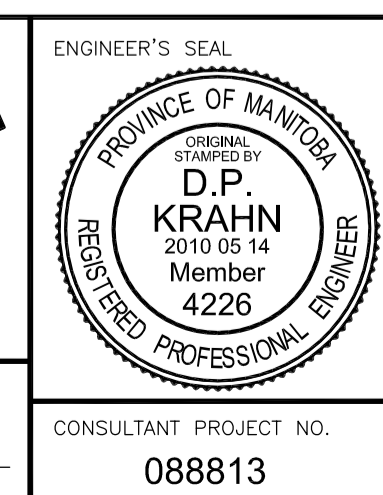
REFERENCES

SERIAL NO.	DIAPHRAGM ASSY.	35-40-07
SALES ORDER	SHIM KIT, DIAPHRAGM	3540078-0000
EH PROJECT	NOSE ASSY.	3540042-0000
NO. OF UNITS	FENDER PANEL ASSY.	35-40-04
	BACKUP ASSY.	35-40-03
	MONORAIL ASSY.	35-40-75
	CONCRETE PAD	35-40-76



LOCATION UNDERGROUND	APPROVED STRUCTURES	B.M. ELEV.	654265 (633392.694, 5525026.192) 232.518	DESIGNED BY	FAK--
SUPV. U/G STRUCTURES COMMITTEE	DATE			DRAWN BY	PMW
				CHECKED BY	SSR--
				APPROVED BY	DPK
				HOR. SCALE	1 : 20
				VERTICAL	
1	ISSUED FOR TENDER	10/05/14	DPK	DATE	2010/05/14
NO.	REVISIONS	DATE	BY	DATE	2010/05/14

NOTE:
LOCATION OF UNDERGROUND STRUCTURES AS SHOWN ARE BASED ON THE BEST INFORMATION AVAILABLE BUT NO GUARANTEE IS GIVEN THAT ALL EXISTING UTILITIES ARE SHOWN OR THAT THE GIVEN LOCATIONS ARE EXACT. CONFIRMATION OF EXISTENCE AND EXACT LOCATION OF ALL UTILITIES MUST BE OBTAINED FROM THE INDIVIDUAL UTILITIES BEFORE PROCEEDING WITH CONSTRUCTION.



THE CITY OF WINNIPEG
TRANSIT DEPARTMENT

Winnipeg

SOUTHWEST RAPID TRANSIT CORRIDOR - STAGE 1
OSBORNE STATION & ASSOCIATED WORKS

QUADGUARD II DETAILS 2 OF 3

CITY DRAWING NUMBER
B237-10-69

SHEET 69 OF 121

CONSULTANT DRAWING NUMBER
C5-S1153-T

CONSULTANT PROJECT NO.
088813

RELEASED FOR CONSTRUCTION
ORIGINAL SIGNED BY RANDY FINGAS
DATE 2010/05/14