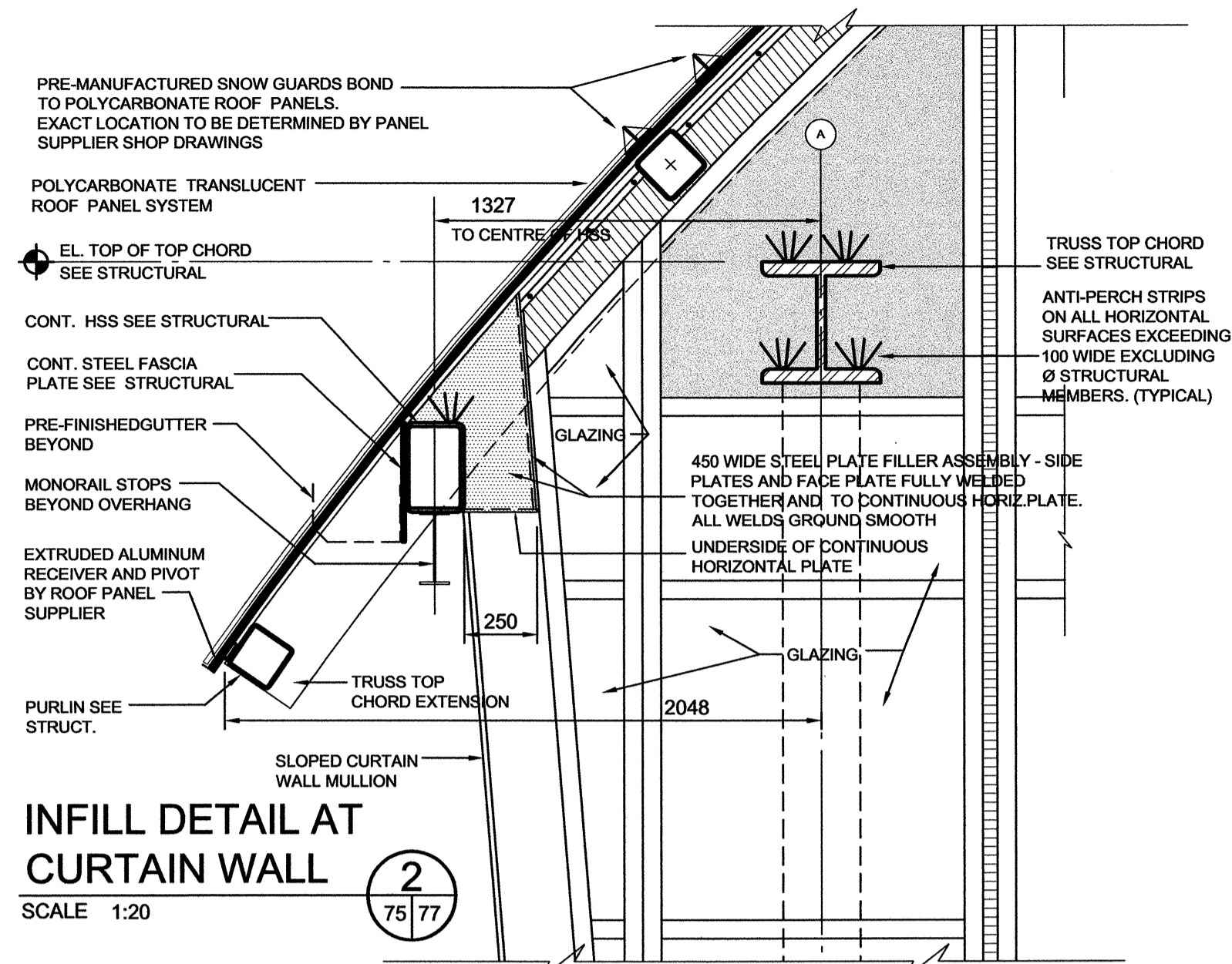
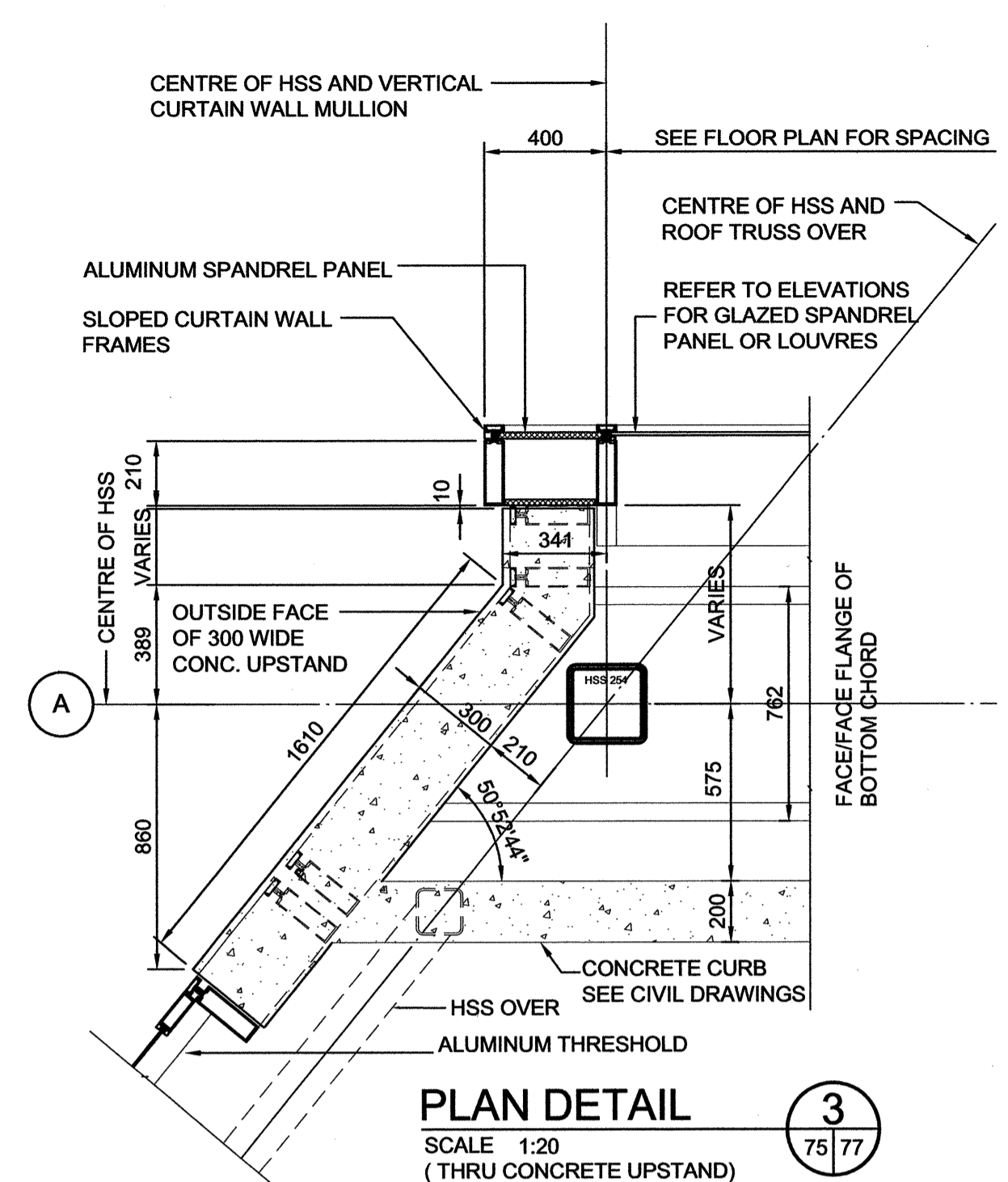


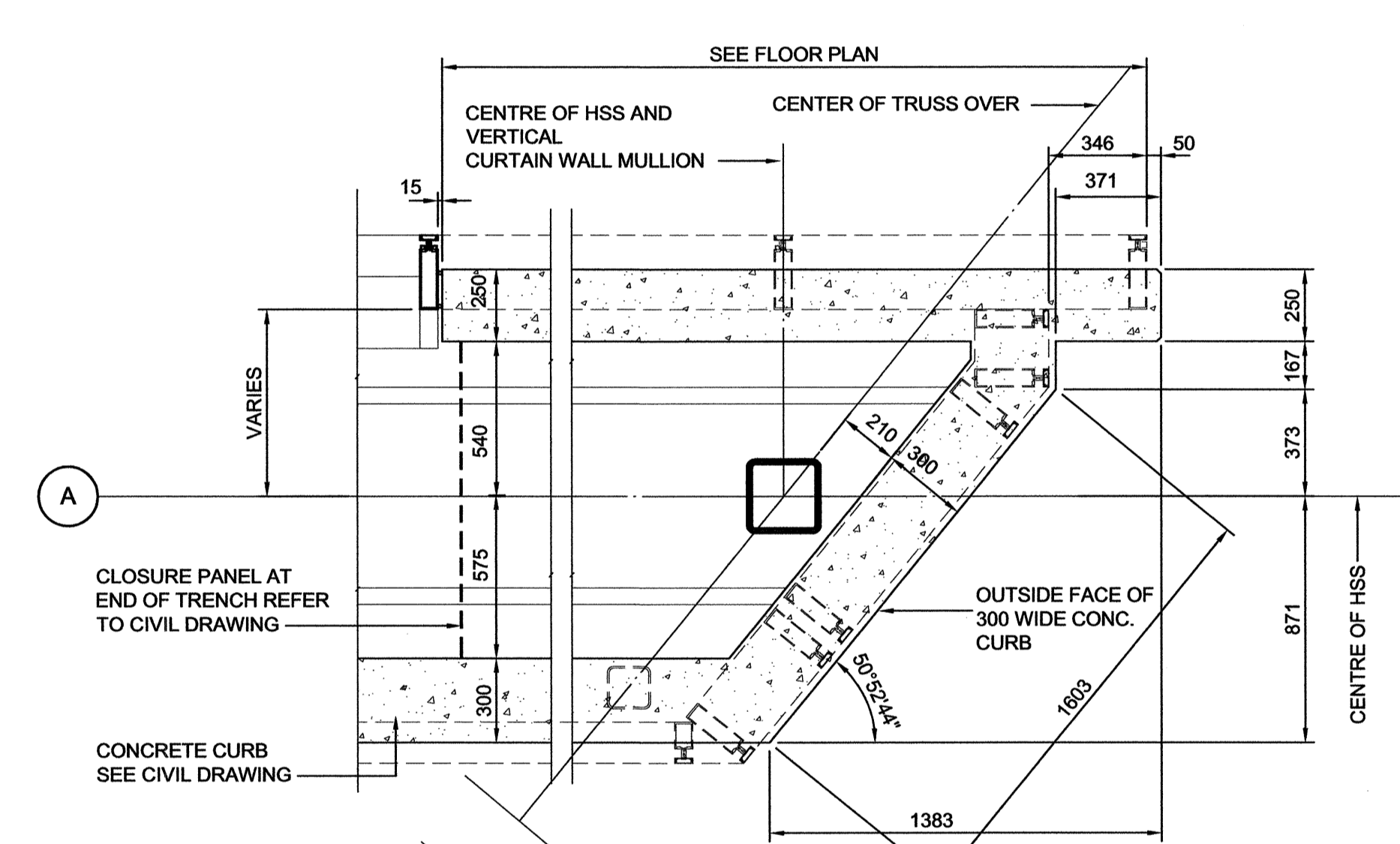
INFILL DETAIL AT CURTAIN WALL
SCALE 1:20



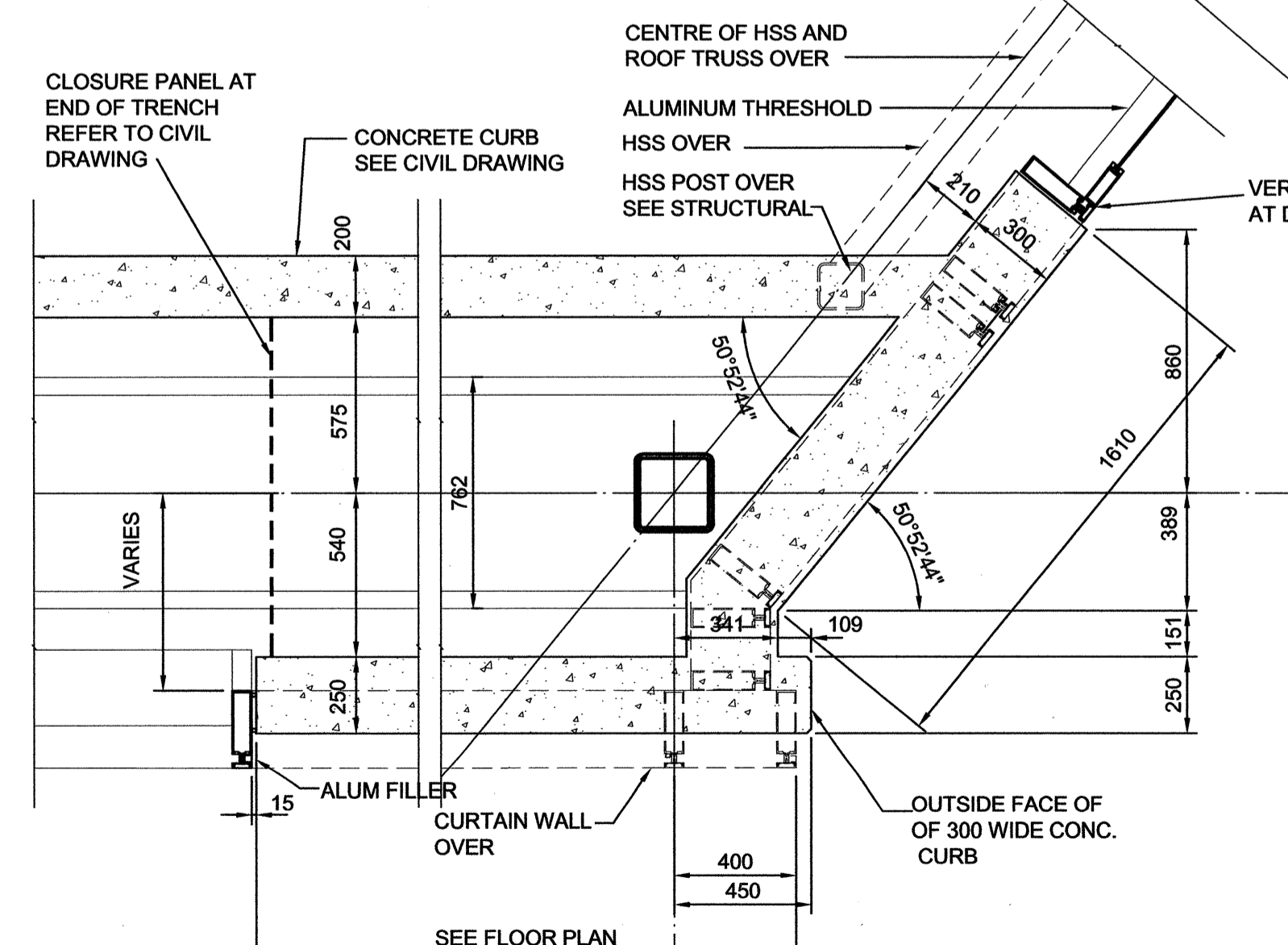
INFILL DETAIL AT CURTAIN WALL
SCALE 1:20



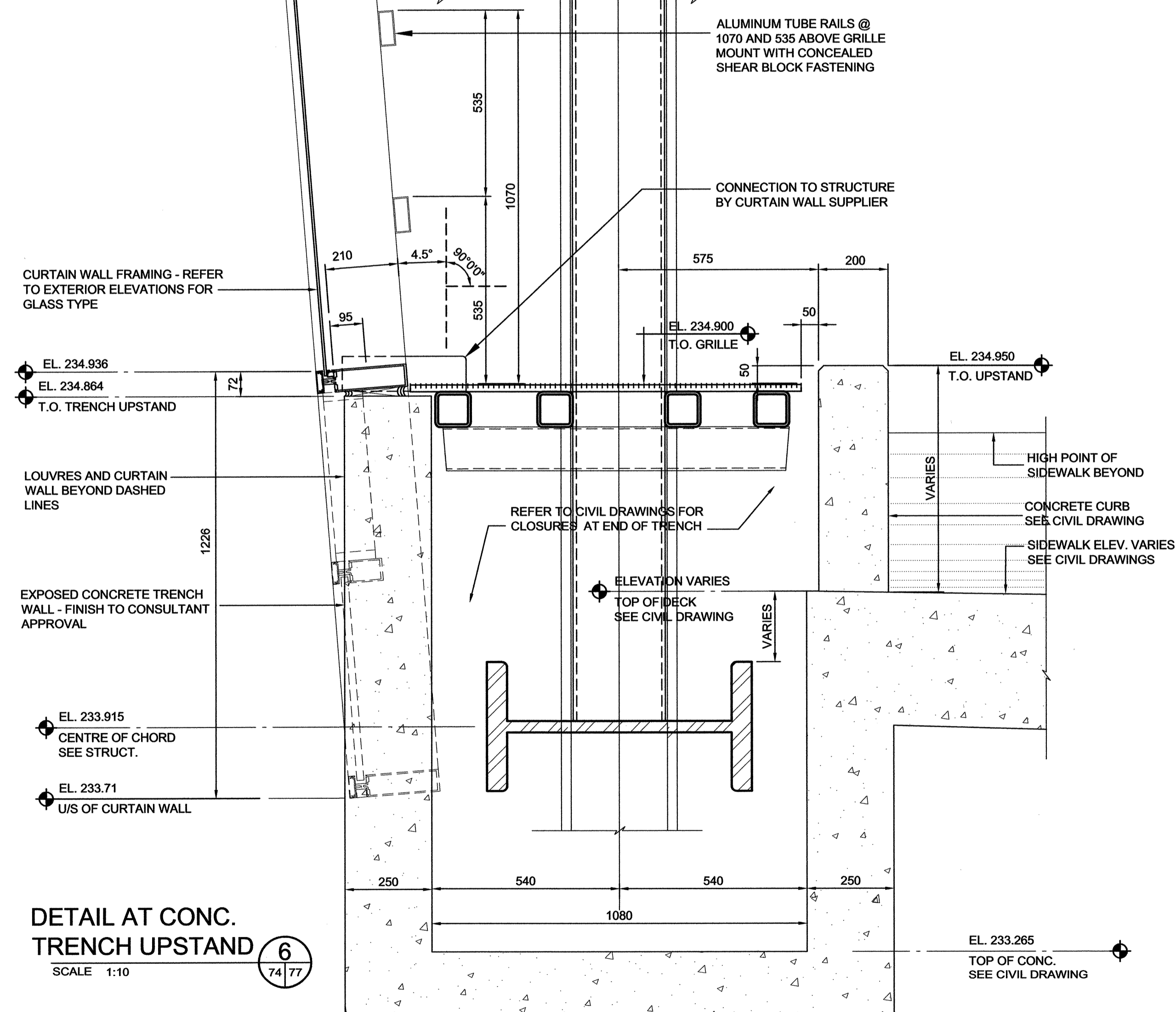
PLAN DETAIL
SCALE 1:20 (THRU CONCRETE UPSTAND)



PLAN DETAIL
SCALE 1:20 (THRU CONCRETE UPSTAND)



PLAN DETAIL
SCALE 1:20 (THRU CONCRETE UPSTAND)



DETAIL AT CONC. TRENCH UPSTAND
SCALE 1:10

H:_2009\09193 Osborne BRT Station\Wd\CS-2206-T-Sections and Misc. details.dwg



LOCATION UNDERGROUND APPROVED STRUCTURES SUPV. U/S STRUCTURES COMMITTEE DATE NOTE: LOCATION OF UNDERGROUND STRUCTURES AS SHOWN ARE BASED ON THE BEST INFORMATION AVAILABLE. BUT NO GUARANTEE IS GIVEN THAT ALL EXISTING UTILITIES ARE SHOWN OR THAT THE GIVEN LOCATIONS ARE EXACT. CONFIRMATION OF EXISTENCE AND EXACT LOCATION OF ALL SERVICES MUST BE OBTAINED FROM THE INDIVIDUAL UTILITIES BEFORE PROCEEDING WITH CONSTRUCTION.		B.M. ELEV. DESIGNED BY DRAWN BY dk DG CHECKED BY APPROVED BY HOR. SCALE as noted VERTICAL 1 ISSUED FOR TENDER 10/05/14 XXX NO. REVISIONS DATE BY DATE 2010/05/04	ARCHITECT'S SEAL gparchitecture DILLON CONSULTING RELEASED FOR CONSTRUCTION ORIGINAL SIGNED BY RANDY FINGAS DATE 2010/05/14	ARCHITECT'S SEAL PROVINCE OF MANITOBA GUY J.O. PEEFONTAINE REGISTERED ARCHITECT CONSULTANT PROJECT NO. 088813	THE CITY OF WINNIPEG TRANSIT DEPARTMENT SOUTHWEST RAPID TRANSIT CORRIDOR - STAGE 1 OSBORNE STATION & ASSOCIATED WORKS SECTIONS AND MISC. DETAILS	CITY DRAWING NUMBER B237-10-77 SHEET 77 OF 121 CONSULTANT DRAWING NUMBER C5-A2006-T
--	--	--	--	---	--	---