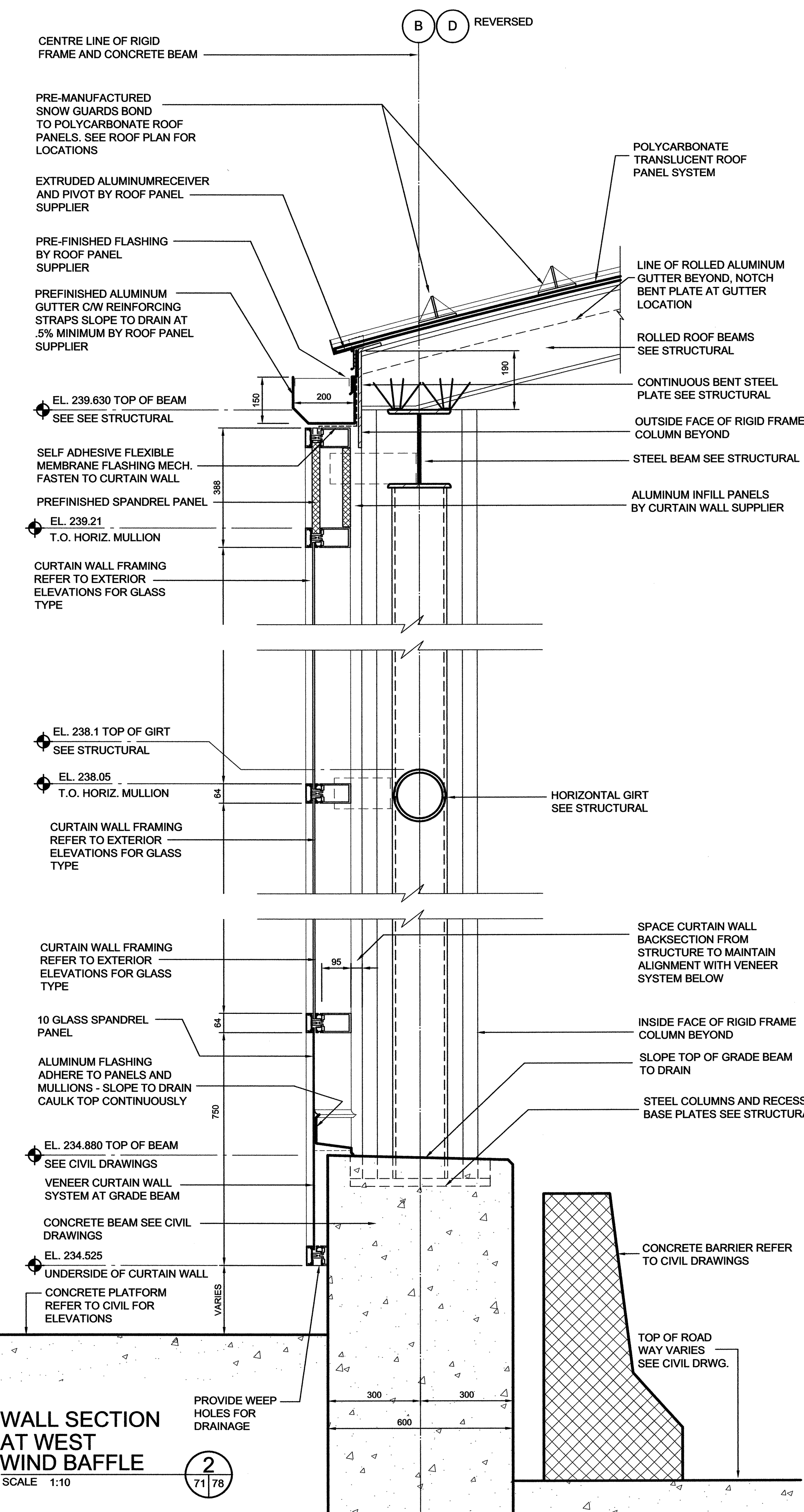
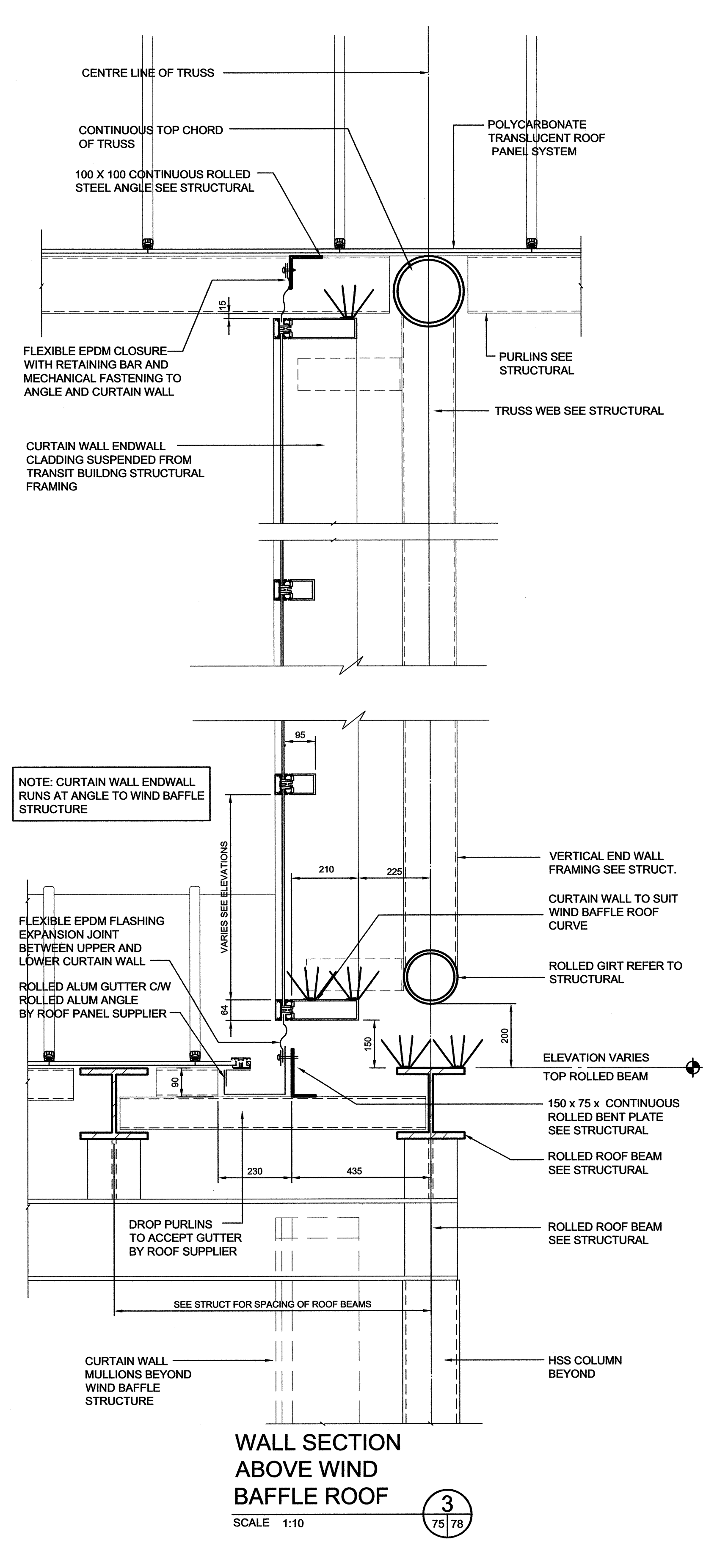


**WALL SECTION AT EAST WIND BAFFLE**  
SCALE 1:10  
1  
71/78



**WALL SECTION AT WEST WIND BAFFLE**  
SCALE 1:10  
2  
71/78



**WALL SECTION ABOVE WIND BAFFLE ROOF**  
SCALE 1:10  
3  
75/78

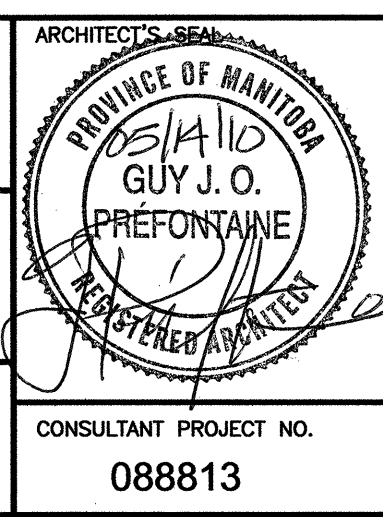
H:\\_2009\09\_93 Osborne BRT Station\Wd CS-A2007-T-wall sections-detailed.dwg



ASSOCIATE ARCHITECT:  
**Frisen Tokar**  
Architects + Landscape + Interior Design

|  |                     |              |
|--|---------------------|--------------|
| LOCATION UNDERGROUND   | APPROVED STRUCTURES | B.M. ELEV.   |
| SUPV. U/S STRUCTURES COMMITTEE   | DATE                |              |
| NOTE:<br>LOCATION OF UNDERGROUND STRUCTURES AS SHOWN ARE BASED ON THE BEST INFORMATION AVAILABLE BUT NO GUARANTEE IS GIVEN THAT ALL EXISTING UTILITIES ARE SHOWN OR CONFIRMATION OF EXISTENCE AND EXACT LOCATION OF ALL SERVICES MUST BE OBTAINED FROM THE INDIVIDUAL UTILITIES BEFORE PROCEEDING WITH CONSTRUCTION. |                     |              |
| 1  | ISSUED FOR TENDER   | 10/05/14 XXX |
| NO.  | REVISIONS           | DATE BY      |

|             |            |
|-------------|------------|
| DESIGNED BY | dk dg      |
| DRAWN BY    |            |
| CHECKED BY  |            |
| APPROVED BY |            |
| HOR. SCALE  | as noted   |
| VERTICAL    |            |
| DATE        | 2010/05/14 |



**THE CITY OF WINNIPEG TRANSIT DEPARTMENT**

SOUTHWEST RAPID TRANSIT CORRIDOR - STAGE 1  
OSBORNE STATION & ASSOCIATED WORKS

WALL SECTIONS, DETAILS 2 OF 2

CITY DRAWING NUMBER: B237-10-78  
SHEET 78 OF 121  
CONSULTANT DRAWING NUMBER: C5-A2007-T

CONSULTANT PROJECT NO.: 088813

RELEASED FOR CONSTRUCTION  
ORIGINAL SIGNED BY RANDY FINGAS  
DATE: 2010/05/14