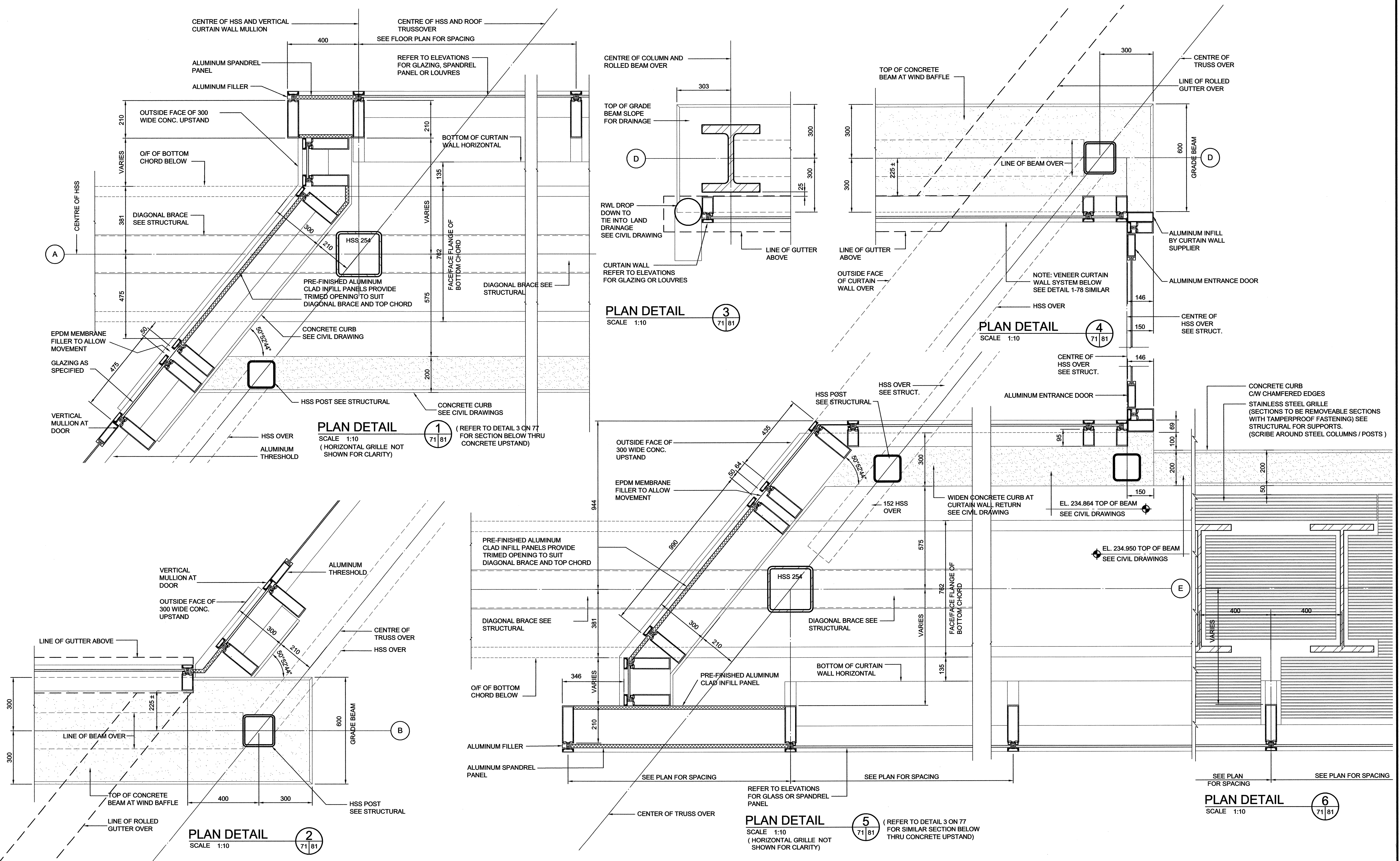


H:\\_2009\09\_03 Osborne BRT Station\Wd\CS-A2010-T-plan\_details.dwg



**Friesen Tokar**  
Architects + Landscape + Interior Design

<b>LOCATION UNDERGROUND APPROVED STRUCTURES</b> SUPP. U/O STRUCTURES COMMITTEE DATE		B.M. ELEV.		DESIGNED BY DRAWN BY dk DG		ARCHITECT'S SEAL 		<b>THE CITY OF WINNIPEG TRANSIT DEPARTMENT</b>	
NOTE: LOCATION OF UNDERGROUND STRUCTURES AS SHOWN ARE BASED ON THE BEST INFORMATION AVAILABLE, BUT NO GUARANTEE IS GIVEN THAT ALL EXISTING UTILITIES ARE SHOWN OR THAT THE GIVEN LOCATIONS AND EXACT LOCATION OF ALL SERVICES AND DEVICES OBTAINED FROM THE INDIVIDUAL UTILITIES BEFORE PROCEEDING WITH CONSTRUCTION.		1 ISSUED FOR TENDER 10/05/14 XXXX		CHECKED BY APPROVED BY		DILLON CONSULTING		SOUTHWEST RAPID TRANSIT CORRIDOR - STAGE 1 OSBORNE STATION & ASSOCIATED WORKS	
NO. REVISIONS		DATE BY		HOR. SCALE as noted VERTICAL 2010/04/15		RELEASED FOR CONSTRUCTION ORIGINAL SIGNED BY RANDY FINGAS DATE 2010/05/14		CONSULTANT PROJECT NO. 088813	
								CITY DRAWING NUMBER B237-10- 81 SHEET 81 OF 121 CONSULTANT DRAWING NUMBER C5-A2010-T	