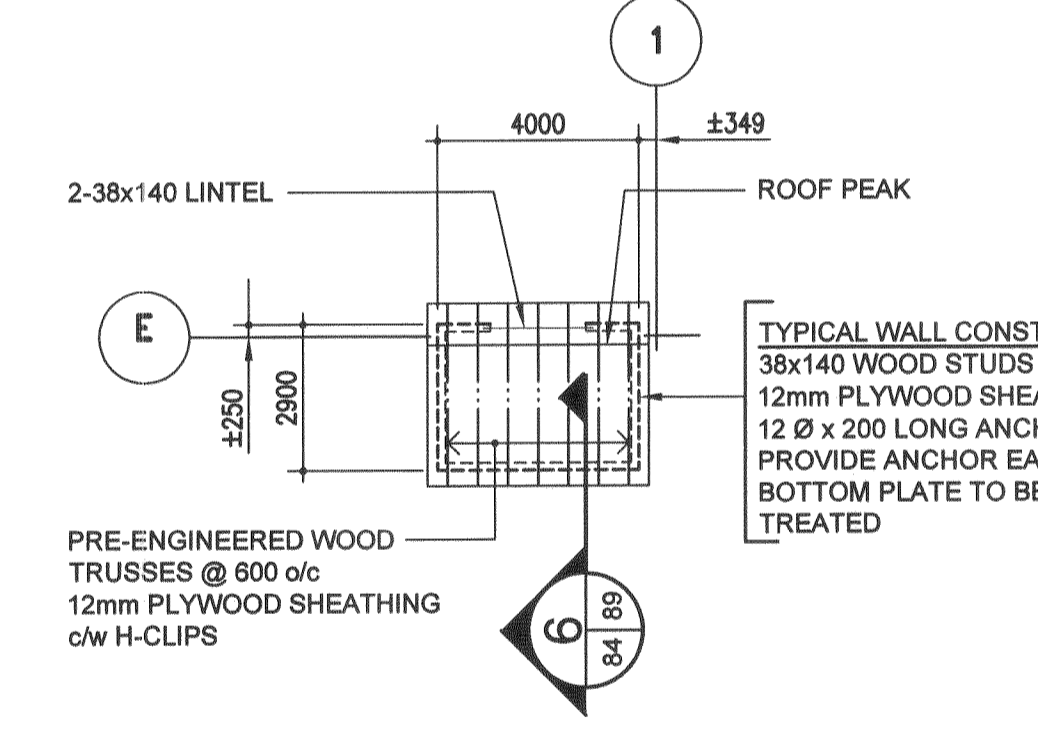
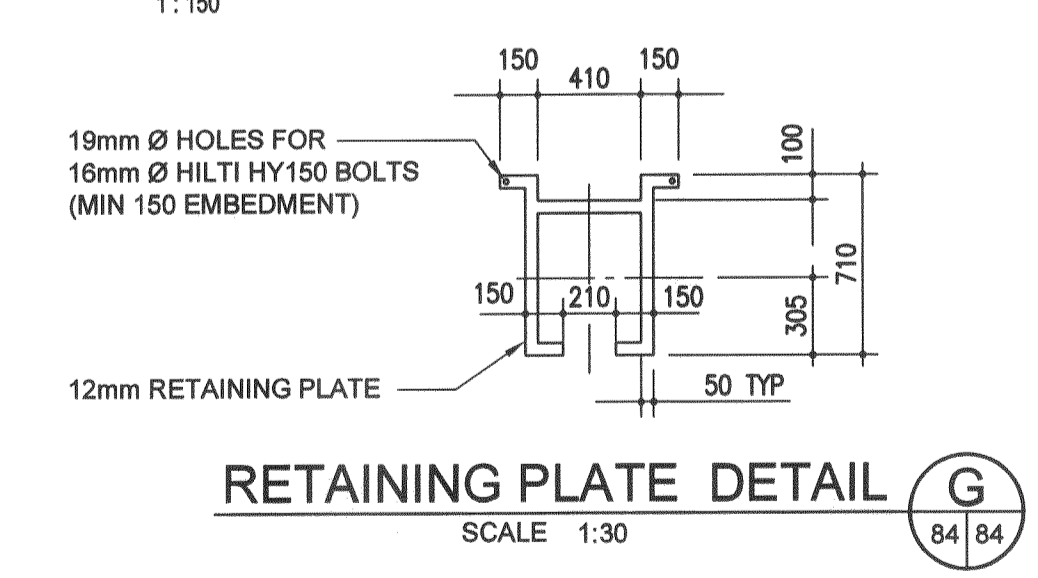


FOUNDATION PLAN

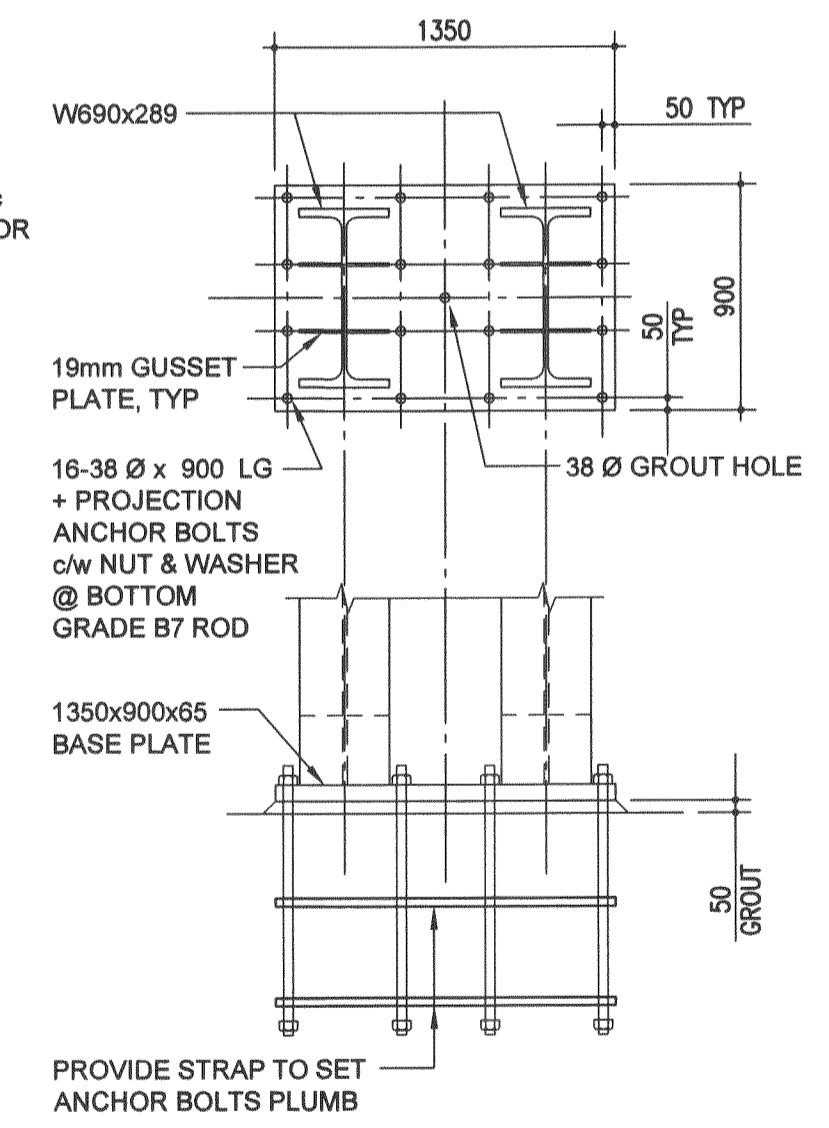
- 1:150 - DIMENSIONS ARE BASED ON TRUSS INSTALLATION TEMPERATURE OF 0° CELSIUS
- ALL ANCHOR BOLTS TO BE A307 UNLESS NOTED OTHERWISE
- ALL ANCHOR BOLTS TO BE GALVANIZED



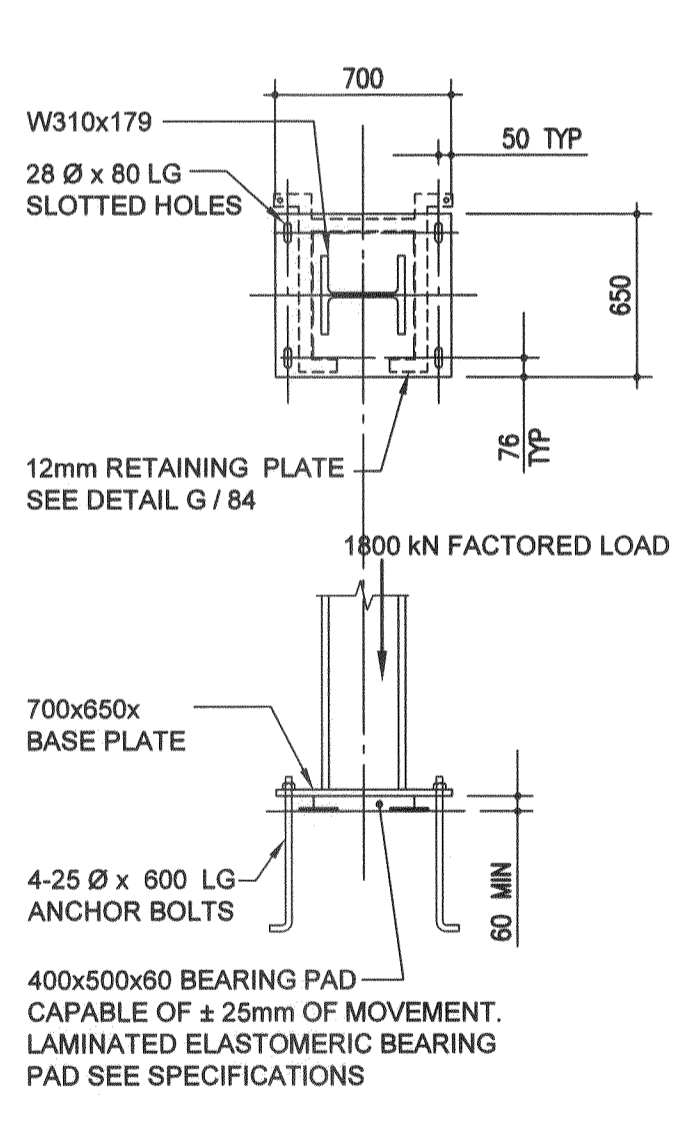
MECH SHED ROOF FRAMING PLAN
1:150



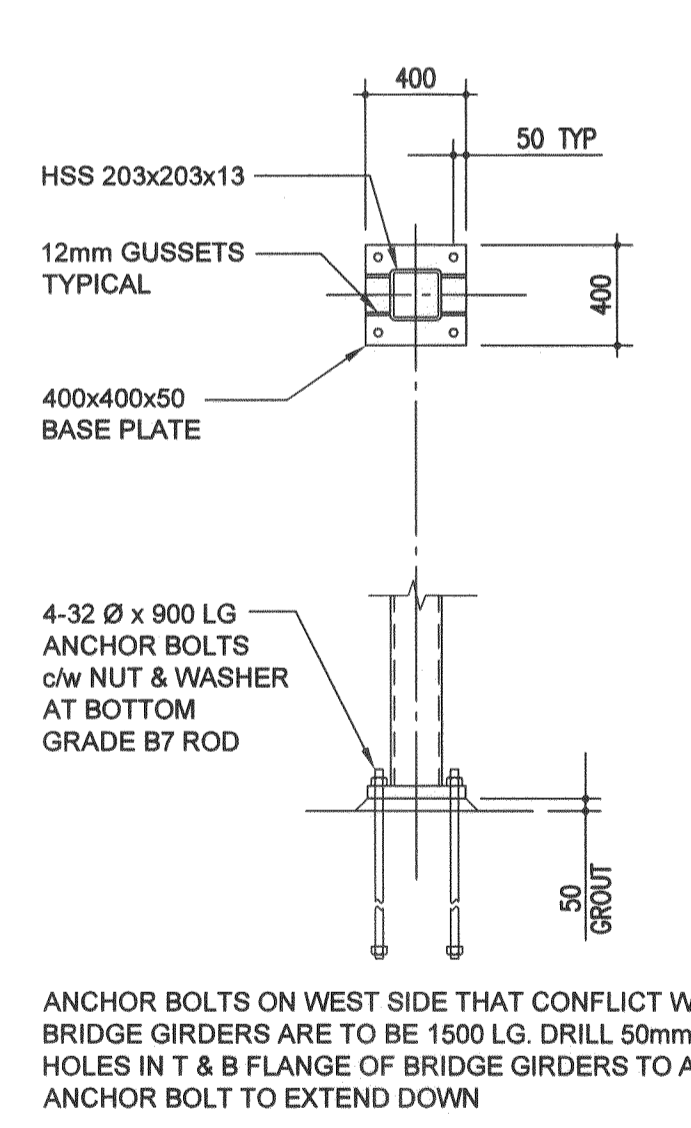
RETAINING PLATE DETAIL G
SCALE 1:30



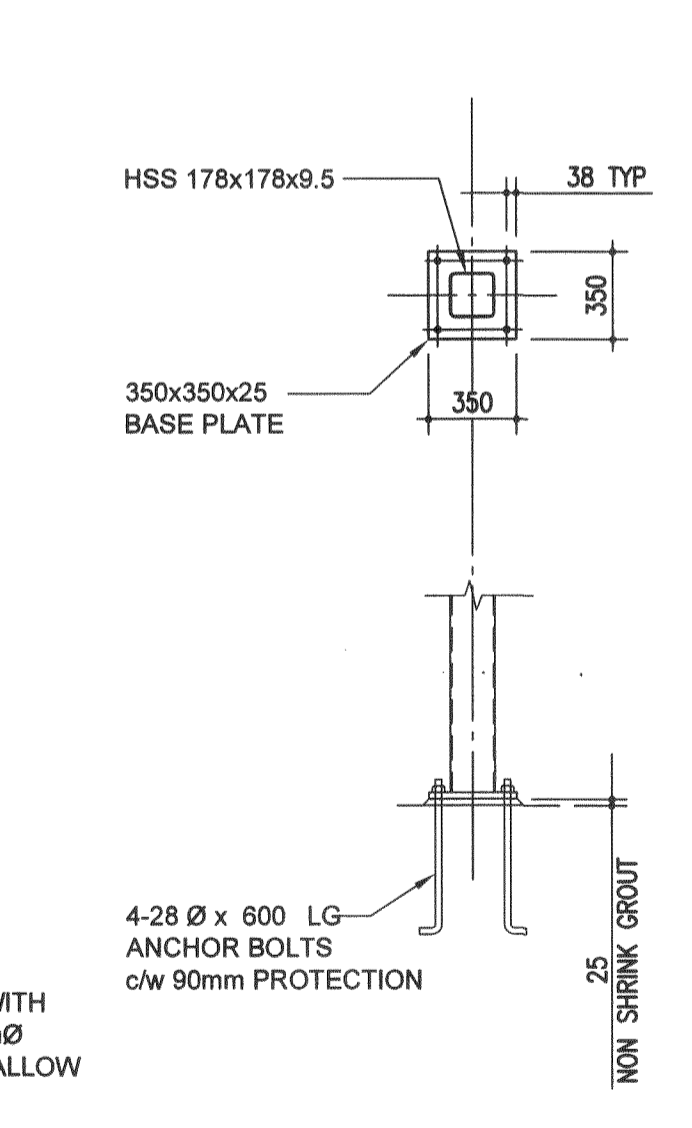
TYPE 'A' B.PLATE A
SCALE 1:30



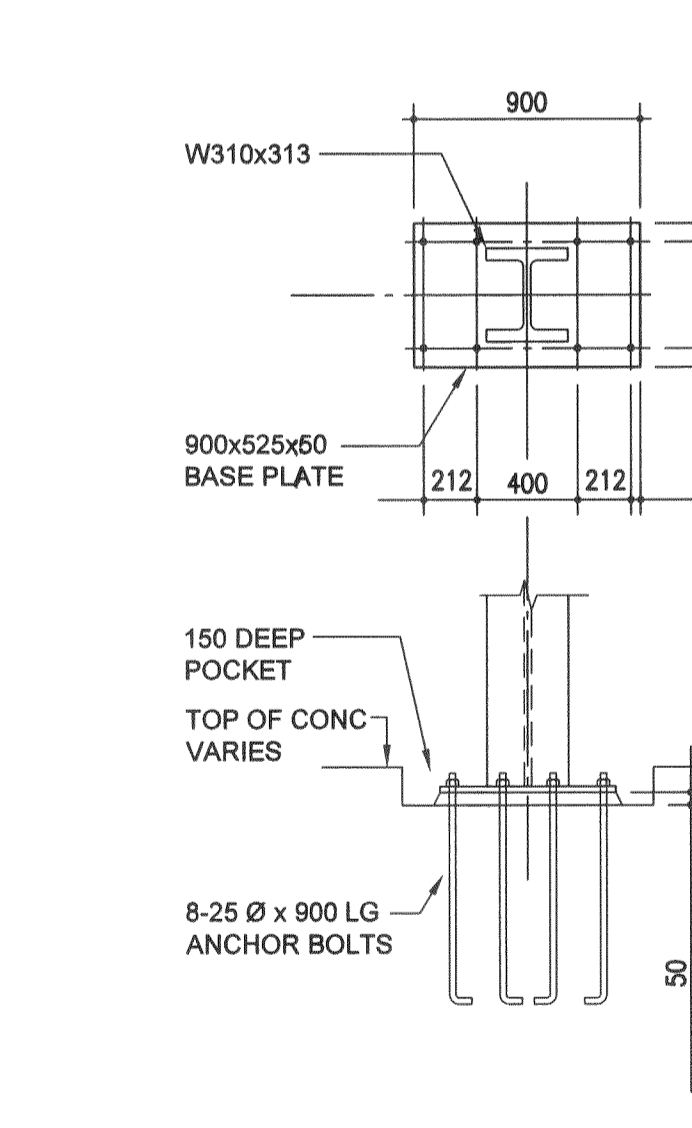
TYPE 'B' B.PLATE B
SCALE 1:30



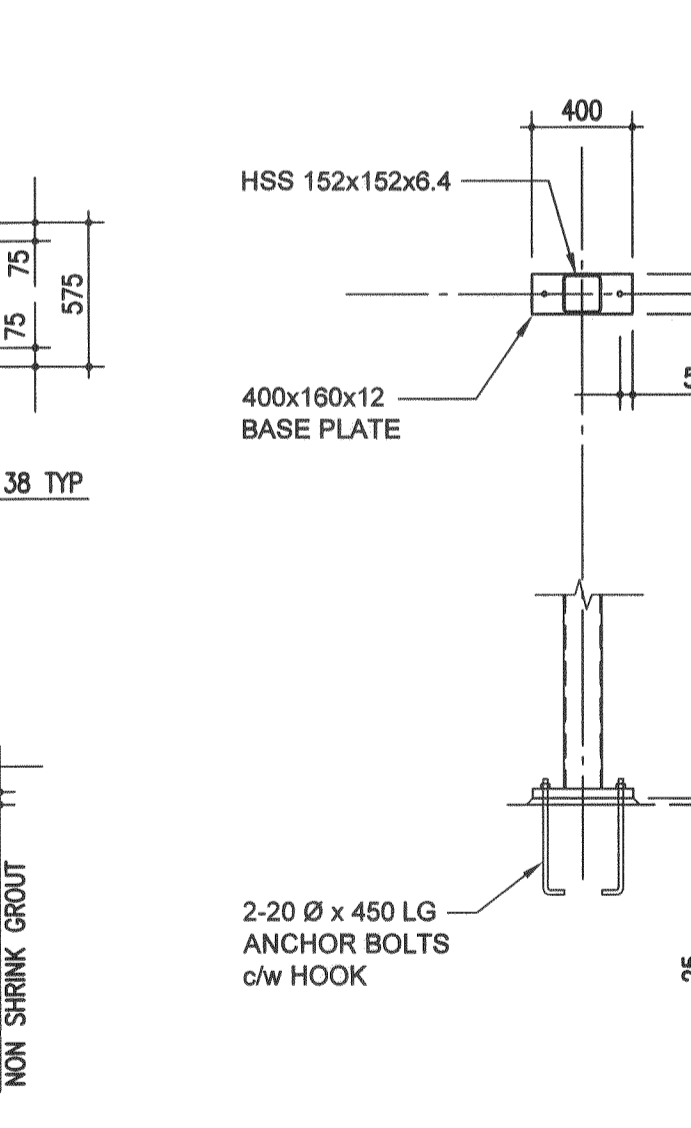
TYPE 'C' B.PLATE C
SCALE 1:30



TYPE 'D' B.PLATE D
SCALE 1:30



TYPE 'E' B.PLATE E
SCALE 1:30



TYPE 'F' B.PLATE F
SCALE 1:30

LOCATION UNDERGROUND	APPROVED STRUCTURES	B.M. ELEV.
SUPV. U/G STRUCTURES COMMITTEE	DATE	
NOTE: LOCATION OF UNDERGROUND STRUCTURES AS SHOWN ARE BASED ON THE BEST INFORMATION AVAILABLE BUT NO GUARANTEE IS GIVEN THAT ALL EXISTING UTILITIES ARE SHOWN OR THAT THE GIVEN LOCATIONS ARE EXACT. CONFIRMATION OF EXISTENCE AND EXACT LOCATION OF ALL SERVICES MUST BE OBTAINED FROM THE INDIVIDUAL UTILITIES BEFORE PROCEEDING WITH CONSTRUCTION.		
1	ISSUED FOR TENDER	10/05/14 TKM
NO.	REVISIONS	DATE BY

DESIGNED BY	BMN / TKM	
DRAWN BY	CL	
CHECKED BY	BMN / TKM	
APPROVED BY		
HOR. SCALE		
VERTICAL		
1	ISSUED FOR TENDER	10/05/14 TKM
NO.	REVISIONS	DATE BY

DILLON CONSULTING

RELEASED FOR CONSTRUCTION
ORIGINAL SIGNED BY RANDY FINGAS
DATE 2010/05/14

ENGINEER'S SEAL
PROVINCE OF MANITOBA
T.K. MALKIEWICZ
REGISTERED PROFESSIONAL ENGINEER
CONSULTANT PROJECT NO. 088813

THE CITY OF WINNIPEG TRANSIT DEPARTMENT

SOUTHWEST RAPID TRANSIT CORRIDOR - STAGE 1
OSBORNE STATION & ASSOCIATED WORKS

CITY DRAWING NUMBER B237-10-84
SHEET 84 OF 121
CONSULTANT DRAWING NUMBER C5-S2100-T

FOUNDATION PLAN, BASE PLATES & MECHANICAL SHED FRAMING PLAN

APEGM
Certificate of Authorization
Crosier Kilgour & Partners Ltd.
No. 235 Date: May 14, 2010

Crosier Kilgour & Partners Ltd.
CONSULTING STRUCTURAL ENGINEERS

F:\2009\1200-1299\2009-1280\Wing\2009-1280_S2100-S2101_Plan.mxd