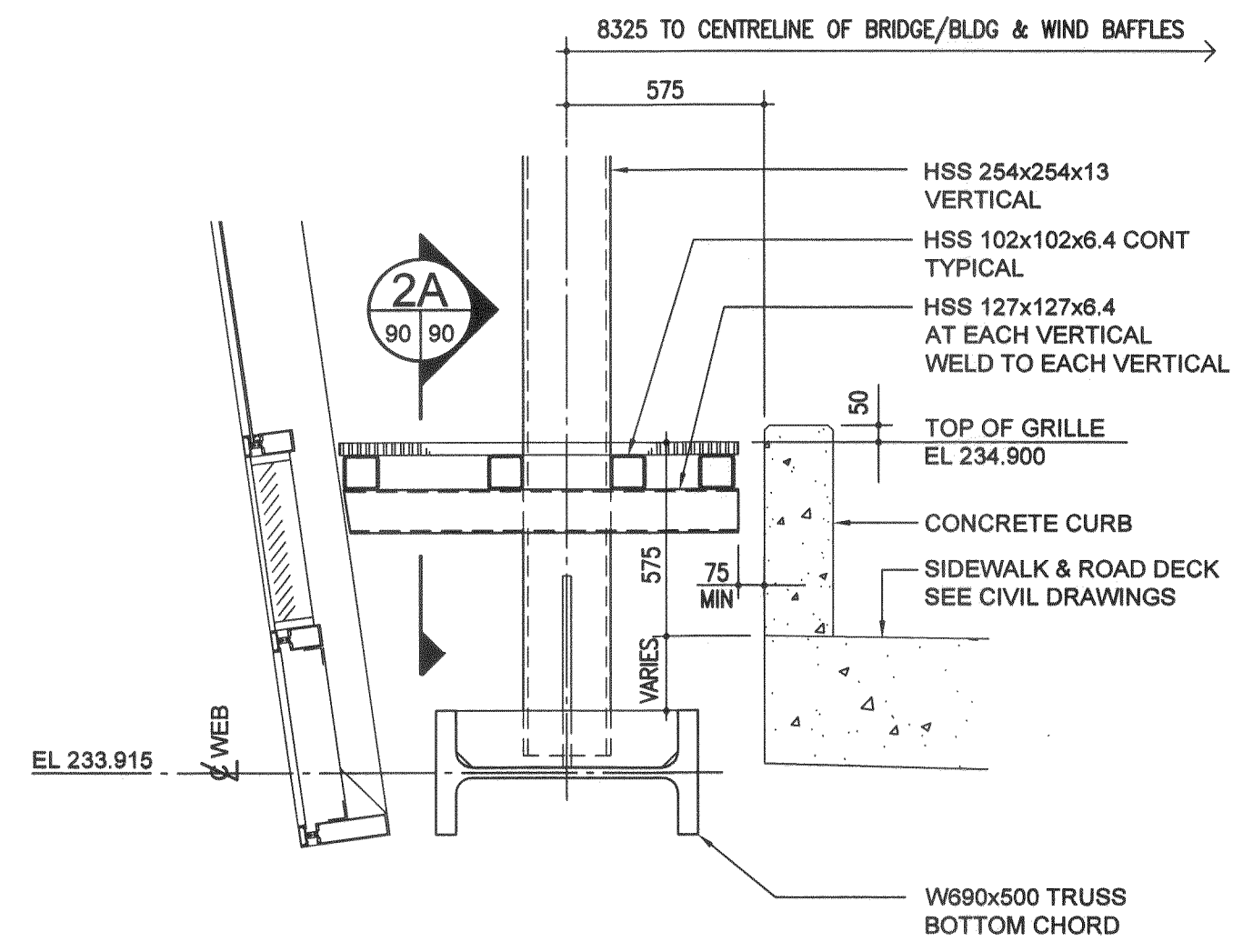
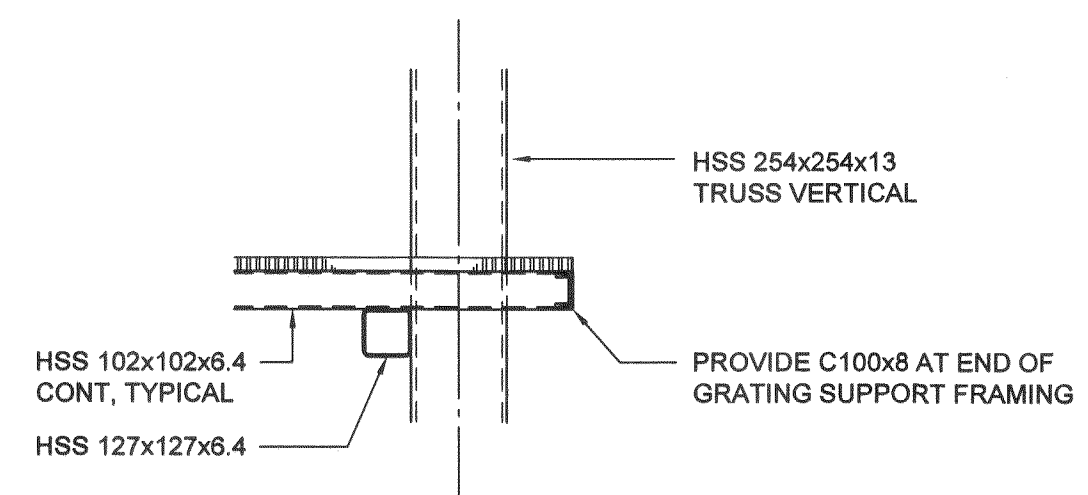


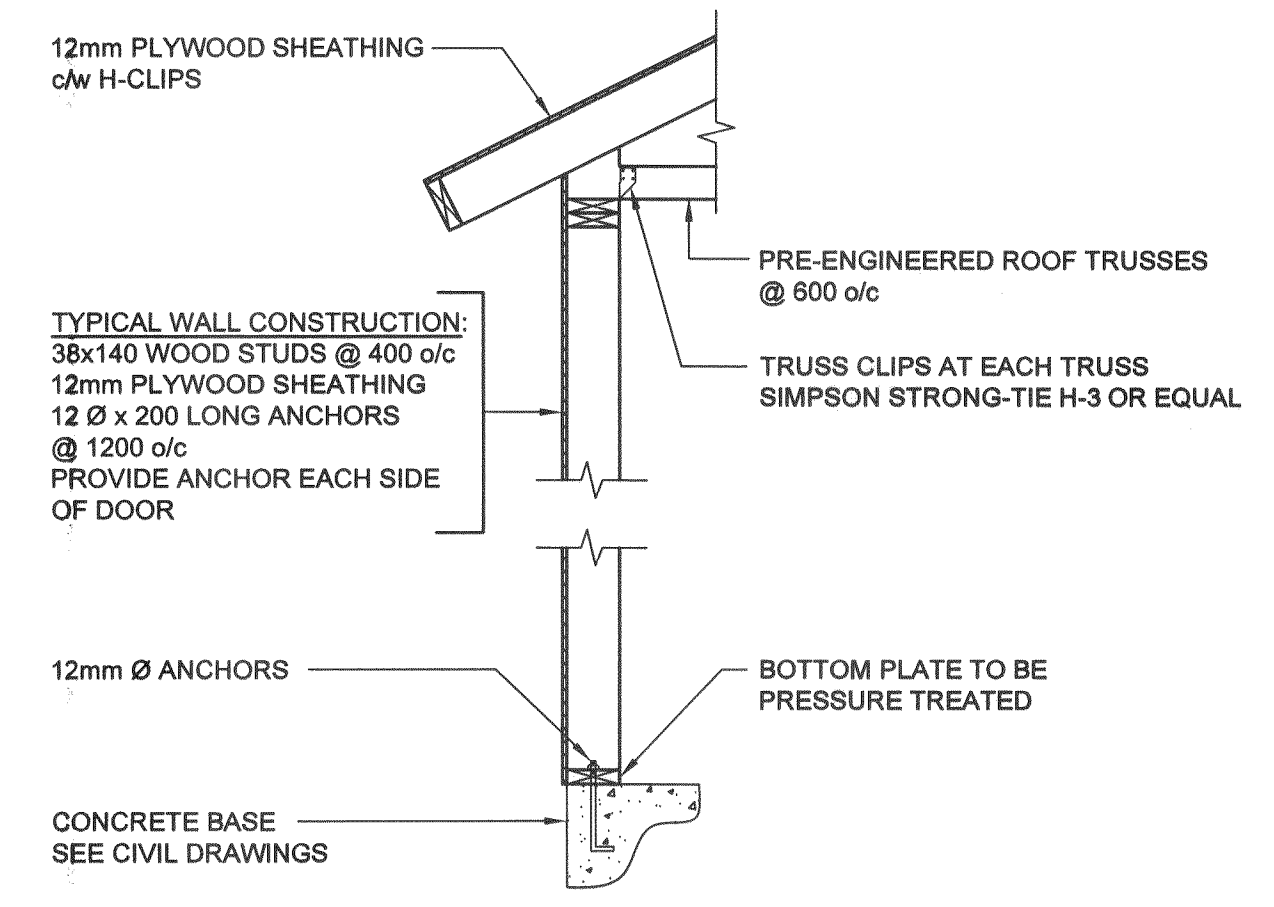
SECTION 1  
SCALE 1:100



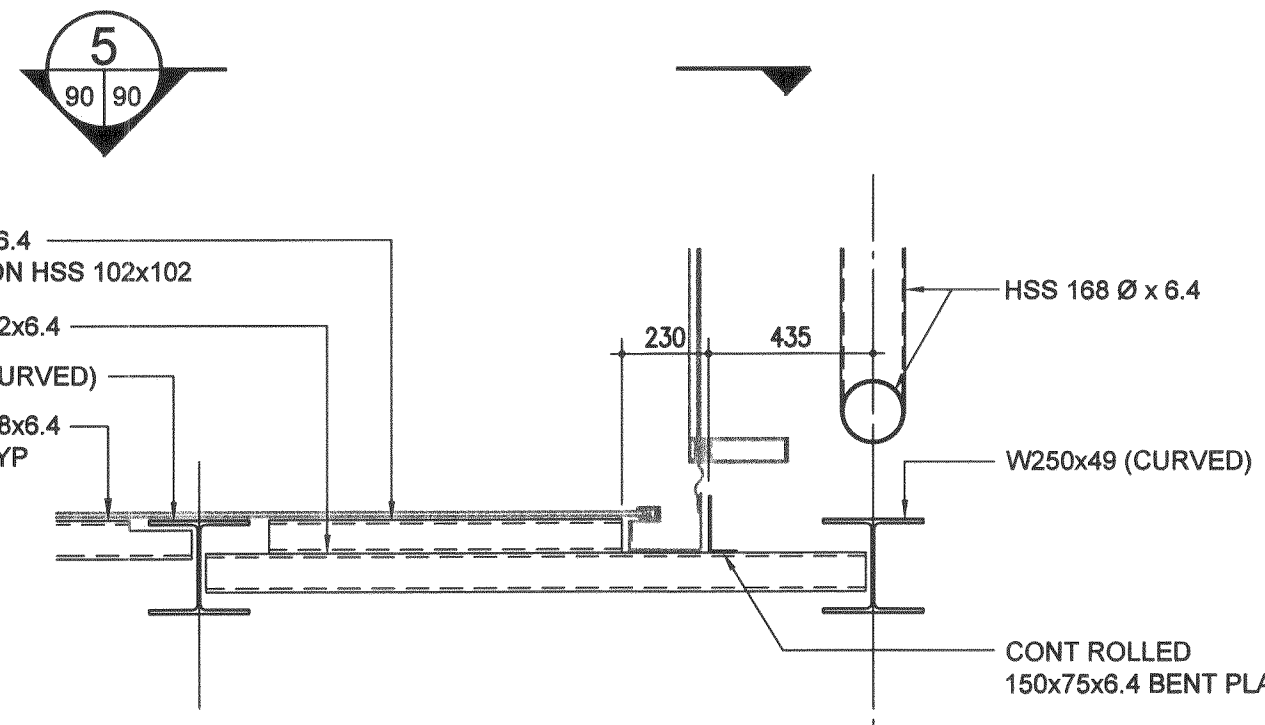
SECTION 2  
SCALE 1:20



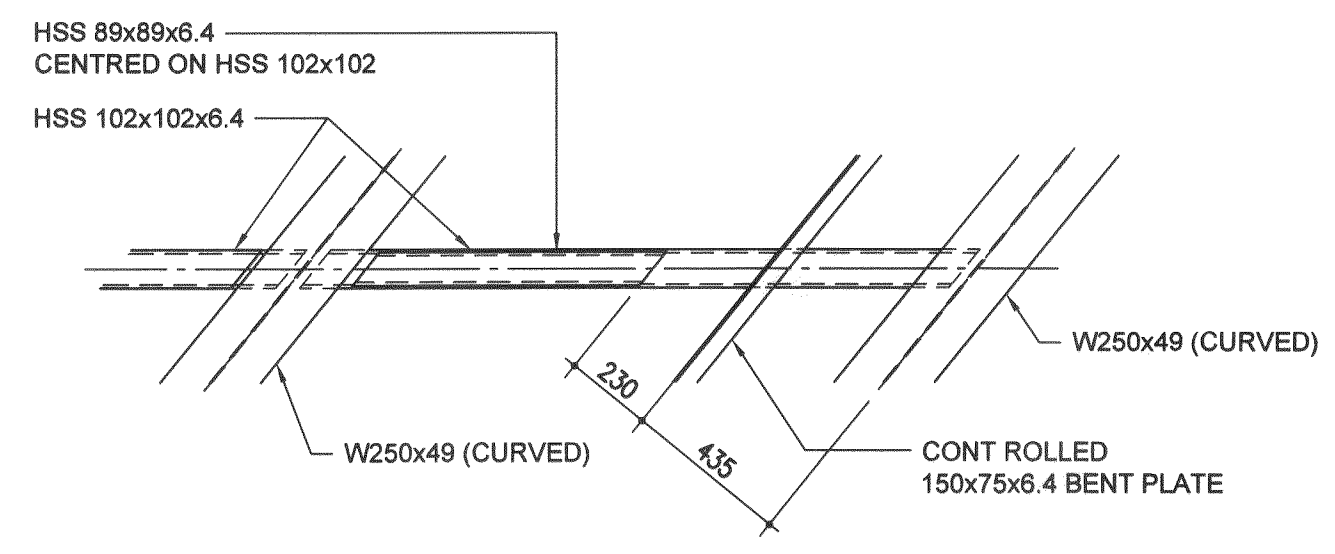
SECTION 2A  
SCALE 1:20



SECTION 3  
SCALE 1:100



SECTION 4  
SCALE 1:20



SECTION 5  
SCALE 1:20

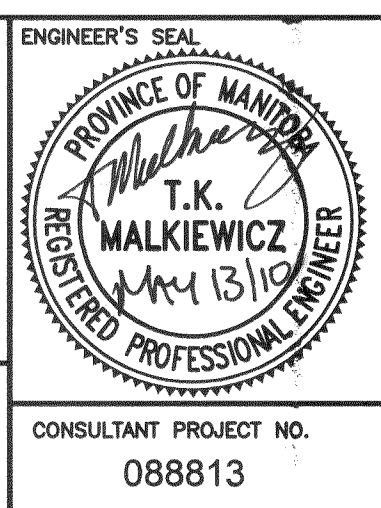
FL:\2009\1200-1299\2009-1280\dwg\2009-1280\_S2102-52105\_Sections.dwg

305-275 Carlton Street  
Winnipeg, Manitoba R2C 5R6  
T 204 543 7501  
F 204 543 7507  
2009-1280  
Crosier Kilgour & Partners Ltd.  
CONSULTING STRUCTURAL ENGINEERS

**APEGM**  
Certificate of Authorization  
Crosier Kilgour & Partners Ltd.  
No. 235 Date: May 14, 2010

LOCATION UNDERGROUND	APPROVED STRUCTURES	B.M. ELEV.
SUPV. U/G STRUCTURES COMMITTEE	DATE	
NOTE: LOCATION OF UNDERGROUND STRUCTURES AS SHOWN ARE BASED ON THE BEST INFORMATION AVAILABLE BUT NO GUARANTEE IS GIVEN THAT ALL EXISTING UTILITIES ARE SHOWN OR THAT THE GIVEN LOCATIONS ARE EXACT. CONFIRMATION OF EXISTENCE AND EXACT LOCATION OF ALL SERVICES MUST BE OBTAINED FROM THE INDIVIDUAL UTILITIES BEFORE PROCEEDING WITH CONSTRUCTION.		

DESIGNED BY	BMN / TKM
DRAWN BY	CL
CHECKED BY	BMN / TKM
APPROVED BY	
HOR. SCALE	RELEASED FOR CONSTRUCTION
VERTICAL	ORIGINAL SIGNED BY RANDY FINGAS
1 ISSUED FOR TENDER	10/05/14 TKM
NO. REVISIONS	DATE BY DATE 2010/05/14



**THE CITY OF WINNIPEG**  
TRANSIT DEPARTMENT

SOUTHWEST RAPID TRANSIT CORRIDOR - STAGE 1  
OSBORNE STATION & ASSOCIATED WORKS

CITY DRAWING NUMBER: B237-10-90  
SHEET 90 OF 121  
CONSULTANT DRAWING NUMBER: C5-2106-T

SECTIONS

CONSULTANT PROJECT NO. 088813