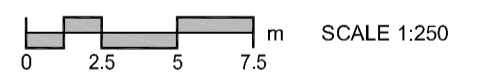


METRIC
WHOLE NUMBERS INDICATE MILLIMETRES
DECIMALIZED NUMBERS INDICATE METRES



AECOM
Certificate of Authorization
AECOM Canada Ltd.
No. 4671 Date: *June 21/10*
BID OPPORTUNITY NO. 307-2010

---	GAS	○	MANHOLE	●
---	MTS	□	CATCH BASIN / CATCH PIT	■
---	HYDRO	△	CURB INLET WITH BOX	▲
---	CATV/FO	○	TREE	
---	TRAFFIC SIGNALS/PIT	⊕	TEST HOLE	
---	LAND DRAINAGE SEWER	⊕	PROPERTY LINE	
---	SANITARY/COMBINED SEWER	⊕	SURVEY BAR	
---	SSP/DCP	⊕	FENCE	
---	WATERMAIN	---	BOC/EOPAVT	---
---	SUBDRAIN	33.000	ELEVATION	(33.100)
---	DITCH	---	TRAFFIC SIGN	---
---	EXISTING	---	LEGEND - PLAN	---
---	NEW	---	LEGEND - PLAN	---
---	EXISTING	---	LEGEND - PLAN	---
---	NEW	---	LEGEND - PLAN	---

---	CONCRETE PAVEMENT	---
---	ASPHALT PAVEMENT	---
---	CONC. SIDEWALK/MEDIAN	---
---	PAVING STONE	---
---	GRAVEL	---
---	RAMP CURB	---
---	PLANING/REMOVAL	---
---	EXISTING	---
---	NEW	---

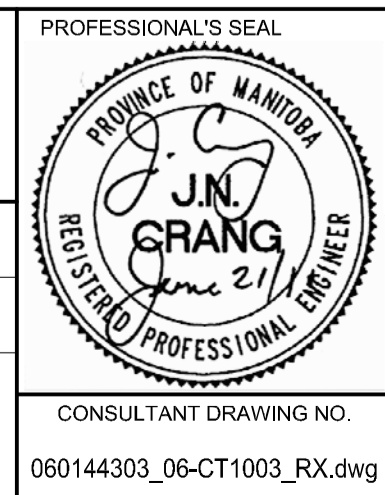
LOCATION APPROVED
UNDERGROUND STRUCTURES

DATE COMMITTEE

NOTE:
LOCATION OF UNDERGROUND STRUCTURES AS SHOWN ARE BASED ON THE BEST INFORMATION AVAILABLE. BUT NO GUARANTEE IS GIVEN THAT ALL EXISTING UTILITIES ARE SHOWN OR THAT THE GIVEN LOCATIONS ARE EXACT. CONFIRMATION OF EXISTENCE AND EXACT LOCATION OF ALL SERVICES MUST BE OBTAINED FROM THE INDIVIDUAL UTILITIES BEFORE PROCEEDING WITH CONSTRUCTION.

1	REVISED - TACTILE STRIPS ADDED AT CORYDON / NASSAU INTERSECTION	10/06/21	KLC
0	ISSUED FOR CONSTRUCTION	10/06/09	KLC
NO.	REVISIONS	YYMMDD	BY

AECOM	DESIGNED BY: JGK/GFN	CHECKED BY: JC
	DRAWN BY: KLC	APPROVED BY: TGS
	HOR. SCALE: 1:250	RELEASED FOR CONSTRUCTION
	VERT. SCALE: 1:10	ORIGINAL SIGNED BY: B.M. WOROBY
	DATE: 10/06/09	DATE: JUNE 8, 2010



THE CITY OF WINNIPEG
PUBLIC WORKS DEPARTMENT
ENGINEERING DIVISION

2010 ACTIVE TRANSPORTATION/ INFRASTRUCTURE STIMULUS PROGRAM
NASSAU STREET N
CORYDON AVENUE TO
PEMBINA HIGHWAY
TRAFFIC CALMING CIRCLE, PARTIAL CLOSURE, AND ONE-WAY CONVERSIONS

CITY DRAWING NUMBER: W-377-16
SHEET 16 OF 22
DRAWING No. 16
REV 1