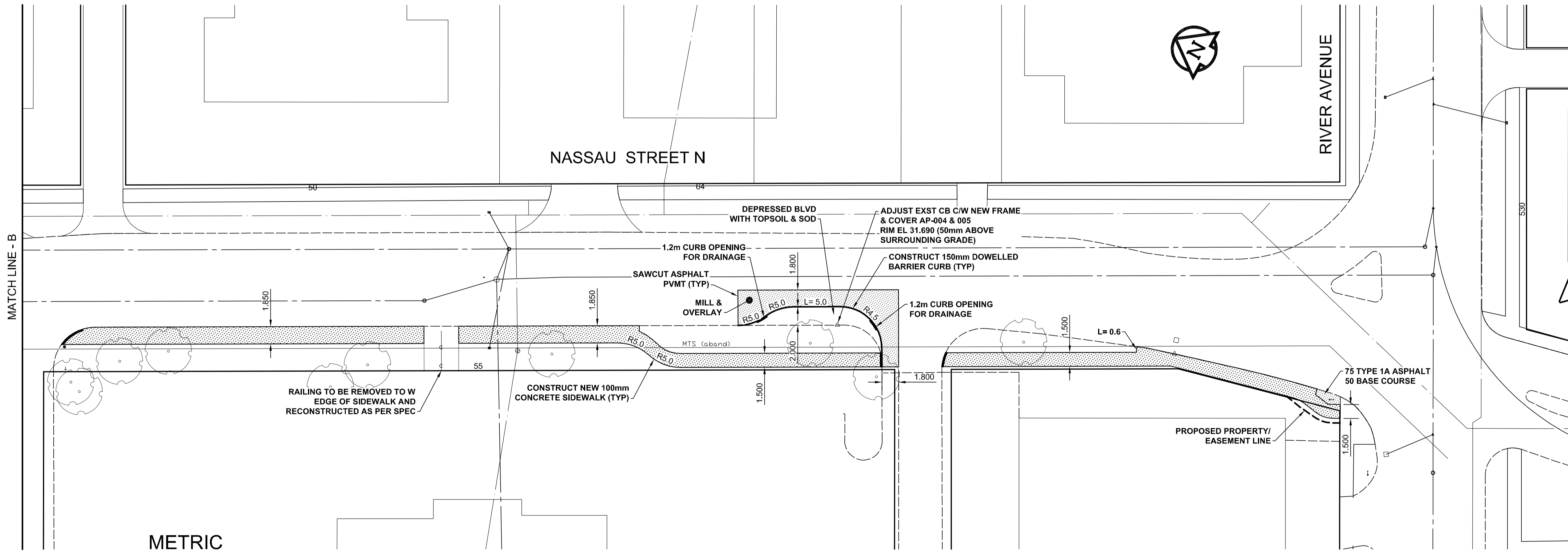
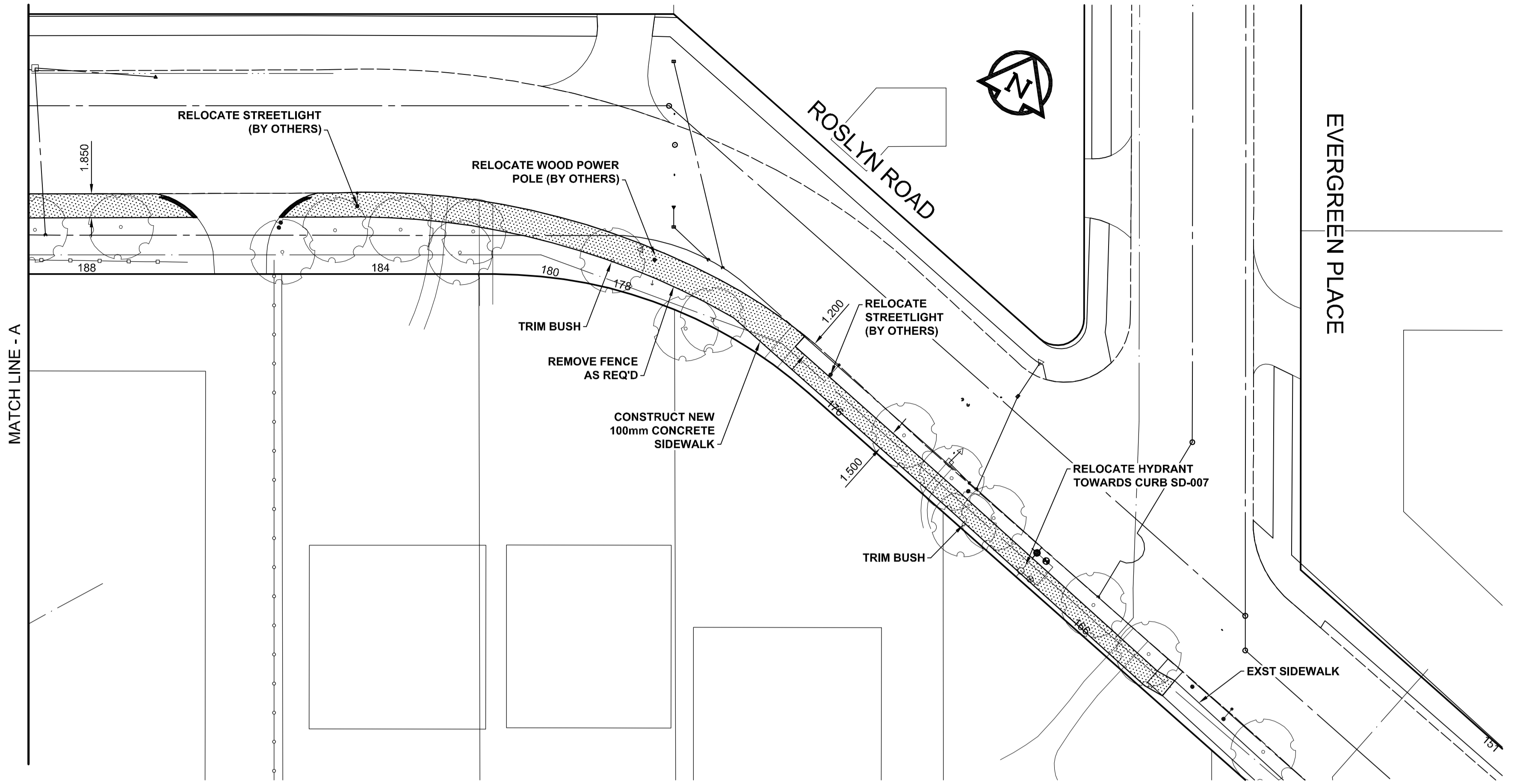
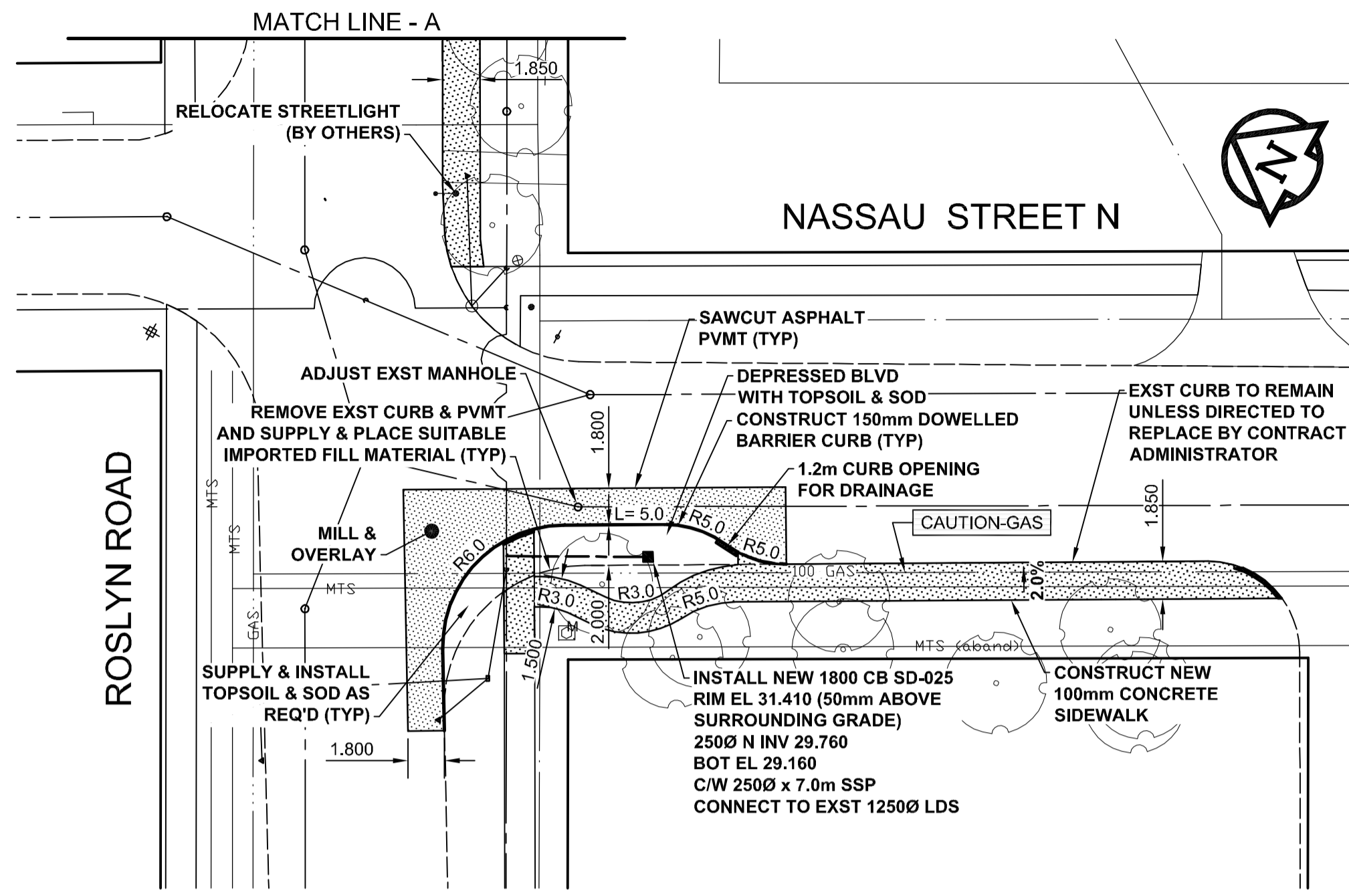
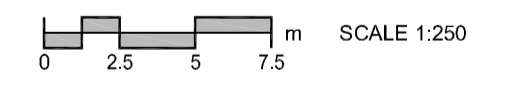


A1 SIZE 23.4" x 33.1" (594mm x 841mm)



**METRIC**  
WHOLE NUMBERS INDICATE MILLIMETRES  
DECIMALIZED NUMBERS INDICATE METRES



**AECOM**  
Certificate of Authorization  
AECOM Canada Ltd.  
No. 4671 Date: June 8/10

BID OPPORTUNITY NO. 307-2010

	GAS		MANHOLE
	MTS		CATCH BASIN / CATCH PIT
	HYDRO		CURB INLET WITH BOX
	CATV/FO		TREE
	TRAFFIC SIGNALS/PIT		TEST HOLE
	LAND DRAINAGE SEWER		PROPERTY LINE
	SANITARY/COMBINED SEWER		SURVEY BAR
	SSP/DCP		FENCE
	WATERMAIN		BOC/EOPAVT
	SUBDRAIN		ELEVATION
	DITCH		TRAFFIC SIGN
	EXISTING		LEGEND - PLAN
	NEW		EXISTING
	LEGEND - PLAN		NEW

	CONCRETE PAVEMENT
	ASPHALT PAVEMENT
	CONC. SIDEWALK/MEDIAN
	PAVING STONE
	GRAVEL
	RAMP CURB
	PLANING/REMOVAL

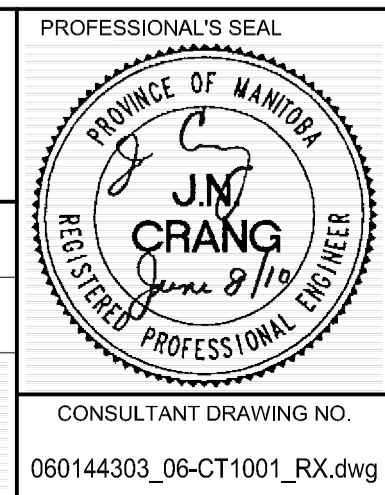
**LOCATION APPROVED**  
UNDERGROUND STRUCTURES

DATE COMMITTEE

**NOTE:**  
LOCATION OF UNDERGROUND STRUCTURES AS SHOWN ARE BASED ON THE BEST INFORMATION AVAILABLE. BUT NO GUARANTEE IS GIVEN THAT ALL EXISTING UTILITIES ARE SHOWN OR THAT THE GIVEN LOCATIONS ARE EXACT. CONFIRMATION OF EXISTENCE AND EXACT LOCATION OF ALL SERVICES MUST BE OBTAINED FROM THE INDIVIDUAL UTILITIES BEFORE PROCEEDING WITH CONSTRUCTION.

ISSUED FOR CONSTRUCTION	10/06/09	KLC
NO. REVISIONS	YYMMDD	BY

<b>AECOM</b>	DESIGNED BY: JGK/GFN	CHECKED BY: JC
	DRAWN BY: KLC	APPROVED BY: TGS
	HOR. SCALE: 1:250	RELEASED FOR CONSTRUCTION: <i>[Signature]</i>
	VERT. SCALE: 1:10	DATE: June 8, 2010
	DATE: 10/06/09	



**THE CITY OF WINNIPEG**  
PUBLIC WORKS DEPARTMENT  
ENGINEERING DIVISION

2010 ACTIVE TRANSPORTATION/INFRASTRUCTURE STIMULUS PROGRAM  
**ROSLYN ROAD**  
EVERGREEN PLACE TO NASSAU STREET N  
NASSAU STREET N  
ROSLYN ROAD TO RIVER AVENUE  
CURB EXTENSIONS, SIDEWALK

CITY DRAWING NUMBER: W-377-14  
SHEET 14 OF 22  
DRAWING No. 14  
REV 0

CONSULTANT DRAWING NO. 060144303\_06-CT1001\_RX.dwg

PLOT: 10/06/09 4:32:22 PM

AECOM FILE NAME: 060144303\_06-CT1001\_RX.dwg Saved By: cooperhd