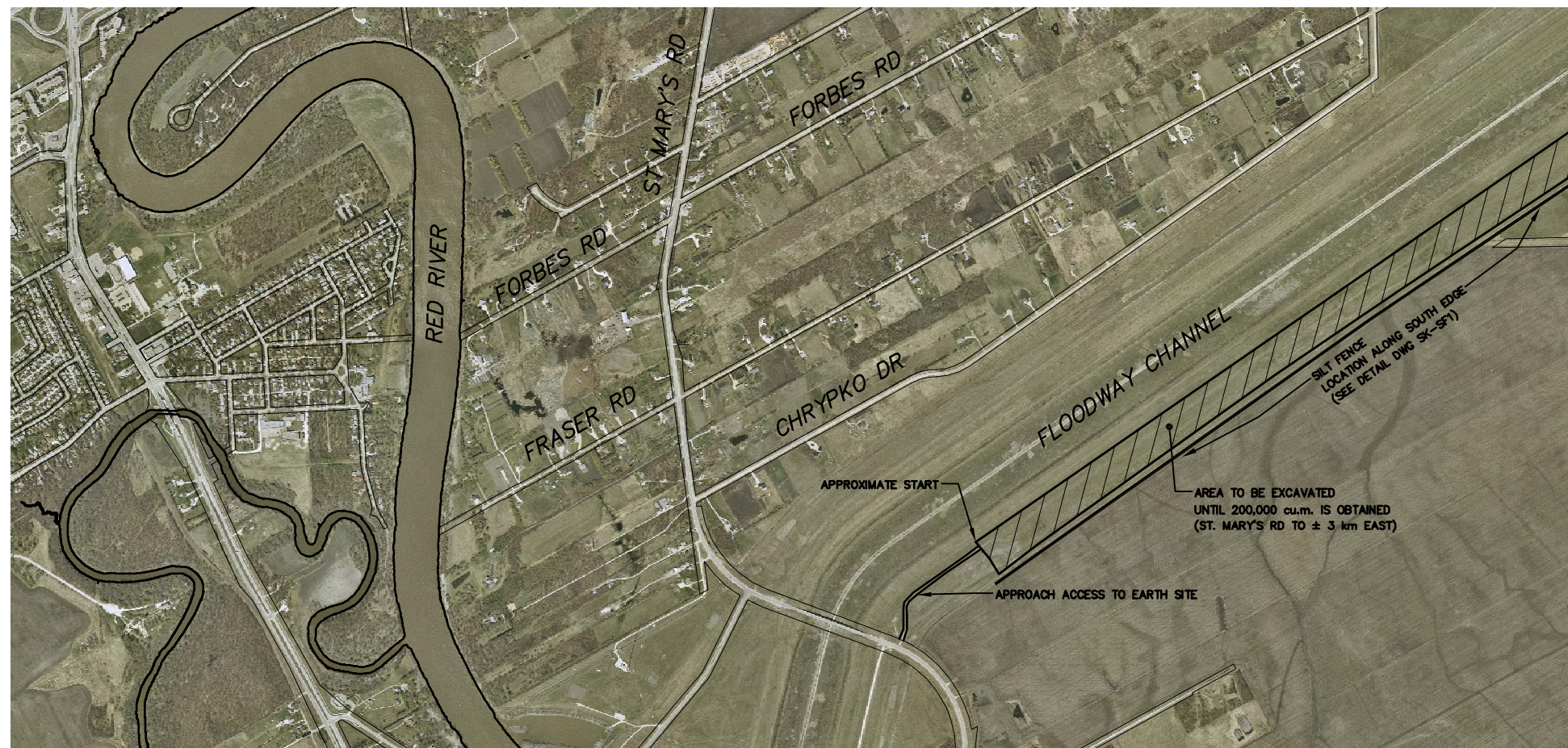
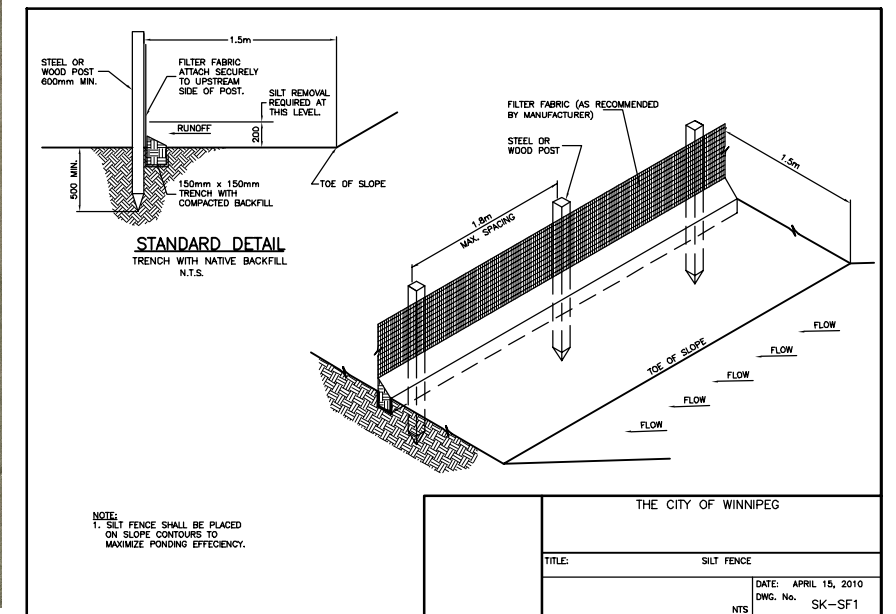


EXCAVATION PROFILES
N.T.S.



SITE PLAN
SCALE 1:10,000



FOR INFORMATION ONLY
WATER AND WASTE DEPARTMENT

THIS DRAWING CONTAINS A 2007 AERIAL PHOTO

B.M. ELEV.	FIELD BOOK #:	CITY OF WINNIPEG		ENGINEER'S SEAL
POSTED TO LBIS		WATER AND WASTE		
		ENGINEERING DIVISION		
DESIGNED BY		DESIGNED BY	CHECKED BY	
DRAWN BY	WKT	DRAWN BY	APPROVED BY	
HOR. SCALE	AS SHOWN	HOR. SCALE	RELEASED FOR CONSTRUCTION	
VERTICAL		VERTICAL		
1.) CHANGED 230,000 CU.M. TO 200,000	10.05.07	WKT		
NO. REVISIONS	DATE	BY	DATE	2010 04 15

BID OPPORTUNITY: 311-2010
PLOT DATE: 2010 05 07

THE CITY OF WINNIPEG
WATER AND WASTE DEPARTMENT

Winnipeg

EXCAVATION AND HAULING OF CLAY MATERIAL FROM THE FLOODWAY TO BRADY ROAD LANDFILL

SITE PLAN OF EXCAVATION
S. SIDE OF FLOODWAY - FROM ST. MARY'S RD TO ±3.0 KILOMETRES EAST

SHEET 2 OF 4
CITY DRAWING NUMBER
SWD-D-394

R:\DRAWINGS\SLDWASTE\BRADY\311-2010_CLAY_HAULING_fromFLOODWAY\SWD-D-394.dwg