

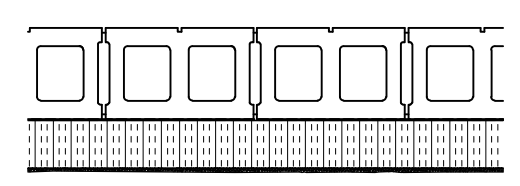
WINAKWA COMMUNITY CENTRE
DOOR SCHEDULE

N ^o	SIZE	DOORS							DOOR FRAMES					HARDWARE CODE	ULC LABEL	REMARKS Δ
		TYPE	THICK 46mm 1 3/4"	MATERIAL HOLLOW METAL	GLAZING	FINISH	MATERIAL	FINISH	TYPE	WELDED P.S.	ALUMINUM	THERMABROKEN	INSULATED			
MAIN FLOOR																
D-100	900 X 2150 PR	D	●	●	●	●	●	2	●	●				1		C/W Removeable Mullion
EX-100	900 X 2150 PR	EX	●	●										23		
D-102A	900 X 2150 PR	C	●	●				2	●					2		
D-102B	900 X 2150	C	●	●				1	●					3		
D-102C	900 X 2150 PR	A	●	●				2	●					4		
D-102D	900 X 2150 PR	A	●	●				2	●					4		
D-103	900 X 2150	C	●	●				3	●					5		
D-104	900 X 2150	C	●	●				1	●					6		
D-105	900 X 2150	A	●	●				1	●					21		
D-106	900 X 2150	A	●	●				1	●					7		
D-107	900 X 2150	A	●	●				1	●					7		
D-108	900 X 2150	A	●	●				1	●					7		
D-109	900 X 2150	A	●	●				1	●					15	Δ	C/W Peep Hole
D-110	900 X 2150	A	●	●				1	●					8		
D-113A	900 X 2150	C	●	●				1	●					10		
D-113B	900 X 2150	C	●	●				1	●					10		
D-114	900 X 2150	C	●	●				1	●					27		
D-115	900 X 2150 PR	A	●	●				2	●					11		
D-116A	900 X 2150	C	●	●				3	●					9		
D-116B	900 X 2150	A	●	●				1	●					12		
D-118	900 X 2150	C	●	●				1	●					19		
D-119	900 X 2150	A	●	●				1	●					13		
D-120	900 X 2150 PR	A	●	●				2	●					14		
D-134	900 X 2150	A	●	●				1	●					19		
D-136	900 X 2150	A	●	●				1	●					18	C Δ	
D-140	900 X 2150	A	●	●				1	●					26		
D-ST4A	900 X 2150	A	●	●				1	●					12	Δ	
D-ST4B	900 X 2150	C	●	●				1	●					20	C Δ	
SECOND FLOOR Δ																
D-201	900 X 2150	C	●	●				1	●					22	C Δ	
D-202A	900 X 2150	A	●	●				1	●					18	C Δ	
D-202B	900 X 2150 PR	A	●	●				1	●					24	C Δ	
D-202C	900 X 2150	A	●	●				1	●					25	C Δ	
D-203	900 X 2150	A	●	●				1	●					19	C Δ	

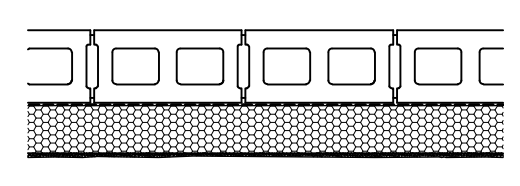
WALL TYPES

**GENERAL NOTES:

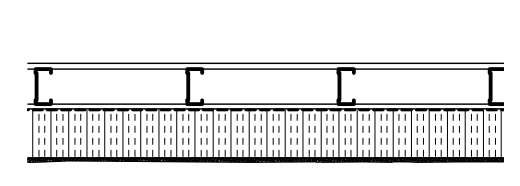
- ALL INTERIOR WALLS TO EXTEND TO U/S OF DECK. PROVIDE ULC LISTED SYSTEM OF FIRE RATED SEALANT AND ROCK WOOL FLUTE CLOSURES TO ACHIEVE SPECIFIED FIRE RATING. AT UNRATED WALLS PROVIDE PREFORMED FLUTE CLOSURES AND/OR CONT. SILL SEAL GASKETS FOR AIR & SOUND SEAL.
- SEE ELEVATIONS FOR COURSING PATTERNS & LOCATION OF SCORED BLOCKS.
- PROVIDE ACOUSTIC SEALANT BETWEEN STUD WALLS & ADJACENT CONSTRUCTION TO MAINTAIN SOUND SEAL.
- USE MOISTURE RESISTANT GWB IN ALL WET ROOMS
- ADJUST STUD PLACEMENT AS REQUIRED TO MAINTAIN FLUSH FINISH JOIST BETWEEN ADJACENT WALL TYPES.
- SEE ALSO FIRE RATING NOTES.



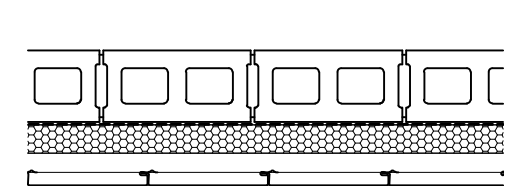
EW1
240 CONCRETE BLOCK PER STRUCT (USE SINGLE SCORE CB UP TO 4,400 HIGH @ 6YM INTERIOR WALL)
AIR / VAPOUR BARRIER SYSTEM (BY EIFS)
125 EXT. INSUL FINISH SYSTEM (RSI-3.5)



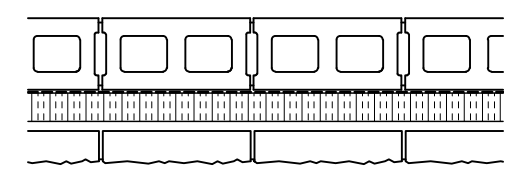
EW2a
190 CONCRETE BLOCK (USE SINGLE SCORE CB UP TO 4,400 HIGH @ 6YM INTERIOR WALL)
AIR / VAPOUR BARRIER SYSTEM (BY EIFS)
125 EXT. INSUL FINISH SYSTEM (RSI-3.5)



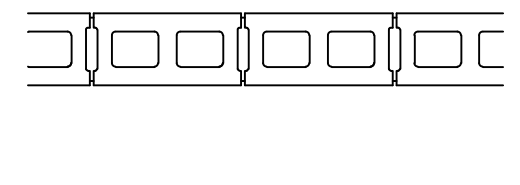
EW2b
(FOR ALTERNATE PRICE)
16 ABUSE RESISTANT GWB, PT. D.
92 STEEL STUD @ 400 O.C.
16 EXTR. GRADE RETYND
AIR / VAPOUR BARRIER SYSTEM (BY EIFS)
125 EXT. INSUL FINISH SYSTEM (RSI-3.5)



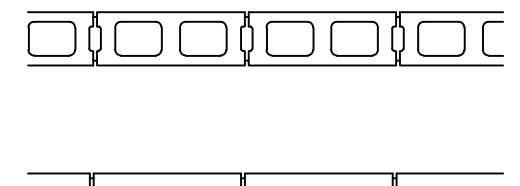
EW3a
190 CONCRETE BLOCK
AIR / VAPOUR BARRIER SYSTEM (BY EIFS)
75 RIGID POLYISO (RSI-3.5)
Z-GIRTS
VERT. METAL CLADDING



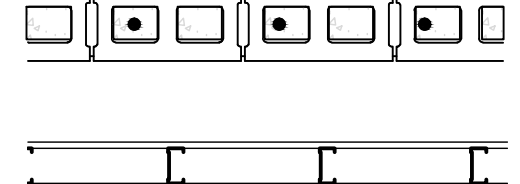
EW3b
190 CONCRETE BLOCK
AIR / VAPOUR BARRIER MEMBRANE
75 RIGID INSUL. POLYISO (RSI-3.5)
25 AIR SPACE
90 SPLIT FACE (SPLIT LEDGE) CONCRETE BLOCK



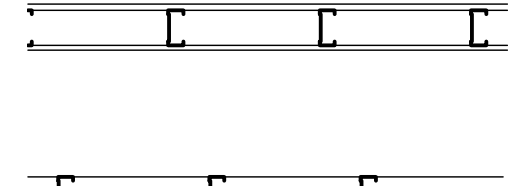
W1
190 CONCRETE BLOCK (USE SINGLE SCORE CB UP TO 4,400 HIGH @ 6YM INTERIOR WALL)



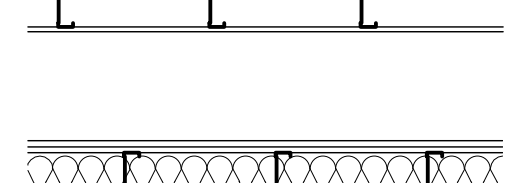
W2
140 CONCRETE BLOCK



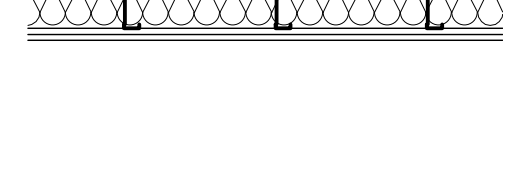
W3
(1-HOUR FIRE RATED)
190 CONCRETE BLOCK (USE LT. WT. BLK FOR REQD FRR)



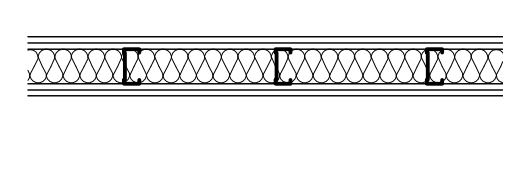
W4
16 ABUSE RESISTANT GWB
92 STEEL STUD 400 O/C MAX
16 ABUSE RESISTANT GWB



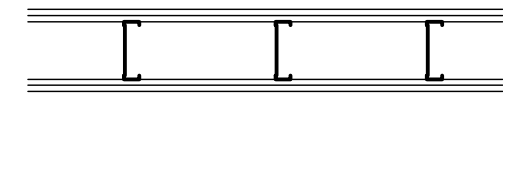
W5
16 ABUSE RESISTANT GWB
92 STEEL STUD 400 O/C MAX



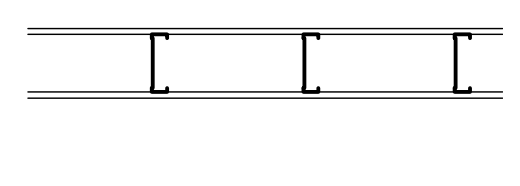
W6
16 ABUSE RESISTANT GWB
16 GWB
152 STEEL STUD @400 O/C MAX
ACOUSTIC BATTS
16 GWB
16 ABUSE RESISTANT GWB



W7
16 ABUSE RESISTANT GWB
16 GWB
92 STEEL STUD @400 O/C MAX
ACOUSTIC BATTS
16 GWB
16 ABUSE RESISTANT GWB

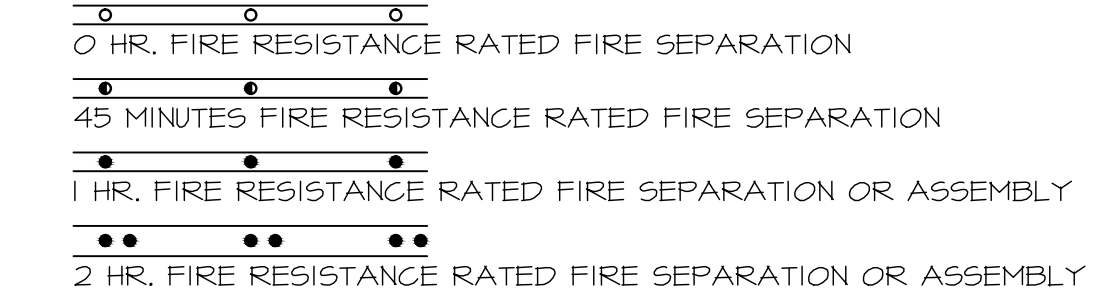


W8
16 ABUSE RESISTANT GWB
16 GWB
152 STEEL STUD @400 O/C MAX
16 GWB
16 ABUSE RESISTANT GWB



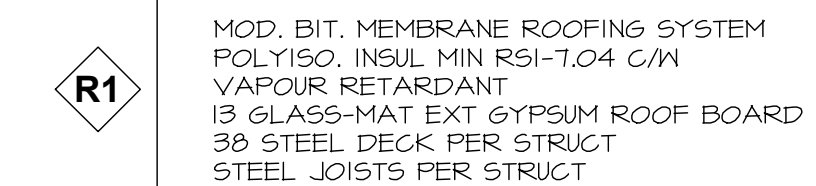
W9
16 ABUSE RESISTANT GWB
152 STEEL STUD @400 O/C MAX
16 ABUSE RESISTANT GWB

FIRE RATINGS

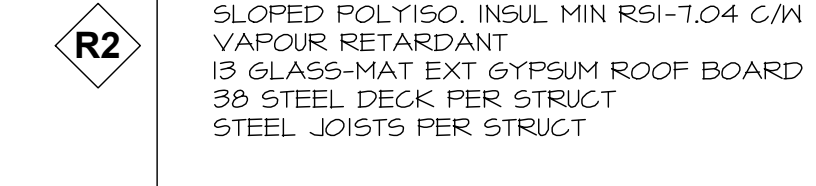


****NOTE:**
1. RUN F.R. ASSEMBLIES CONT THROUGH PRIOR TO INSTALLING ABUTTING WALLS.
2. F.R. WALLS TO RUN CONT TO U/S OF FLOOR/ROOF ASSEMBLY ABOVE.
3. F.R. WALLS TO BE CONSTRUCTED TO APPROPRIATE ULC LISTED ASSEMBLY FOR MATERIALS INDICATED.
4. SEE ALSO WALL TYPES GENERAL NOTES.

ROOF TYPES

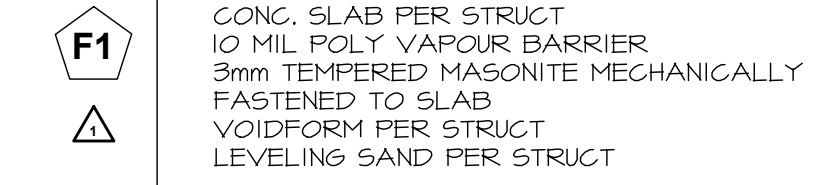


R1
MOD. BIT. MEMBRANE ROOFING SYSTEM
POLYISO. INSUL MIN RSI-1.04 C/W
VAPOUR RETARDANT
13 GLASS-MAT EXT GYPSUM ROOF BOARD
30 STEEL DECK PER STRUCT
STEEL JOISTS PER STRUCT

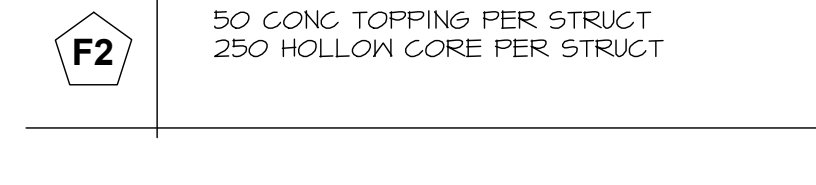


R2
MOD. BIT. MEMBRANE ROOFING SYSTEM
SLOPED POLYISO. INSUL MIN RSI-1.04 C/W
VAPOUR RETARDANT
13 GLASS-MAT EXT GYPSUM ROOF BOARD
30 STEEL DECK PER STRUCT
STEEL JOISTS PER STRUCT

FLOOR TYPES



F1
CONG. SLAB PER STRUCT
10 MIL POLY VAPOUR BARRIER
3mm TEMPERED MASONITE MECHANICALLY FASTENED TO SLAB
VOIDFORM PER STRUCT
LEVELING SAND PER STRUCT

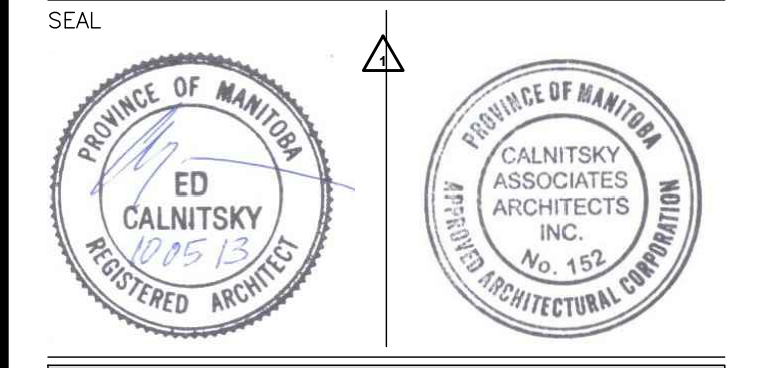


F2
50 CONG TOPPING PER STRUCT
250 HOLLOW CORE PER STRUCT

NO.	REVISION	DATE	BY
1	ISSUED WITH ADDENDUM 2	2010.06.07	CAA
0	ISSUED FOR TENDER	2010.05.13	CAA

THIS DRAWING IS THE EXCLUSIVE PROPERTY OF THE ARCHITECT AND CAN BE REPRODUCED ONLY WITH THE PERMISSION OF THE ARCHITECT IN WHICH CASE THE REPRODUCTION MUST BEAR THE NAME OF THE ARCHITECT.
THIS DRAWING SHALL NOT BE SCALED. FOLLOW GIVEN DIMENSIONS ONLY.
THE CONTRACTOR SHALL SATISFY HIMSELF THAT ALL DIMENSIONS AND INFORMATION SHOWN ARE CORRECT.
PRIOR TO COMMENCEMENT OF WORK REPORT ANY DISCREPANCIES TO THE ARCHITECT.
VARIATIONS AND MODIFICATIONS TO WORK SHOWN WILL NOT BE ALLOWED WITHOUT WRITTEN PERMISSION OF THE ARCHITECT.

CONSULTANT



CALNITSKY ASSOCIATES ARCHITECTS

CALNITSKY ASSOCIATES ARCHITECTS INC.
ARCHITECTURE | INTERIOR DESIGN
124 Nassau Street North | Winnipeg, Manitoba R3L 2H1
Tel: (204) 453-6441 | Fax: (204) 453-3392
E-mail: caa@escape.ca

PROJECT TITLE
ADDITION & RENOVATION OF WINAKWA COMMUNITY CENTRE
980 WINAKWA RD, WINNIPEG

SHEET TITLE
SCHEDULES

DRAWN BY	SCALE	SHEET NUMBER
CS, SM	AS SHOWN	A0.1
CHECKED BY	DATE	
BM	2010.05.13	
PROJECT NO.	REV. DATE	REV. NO.
09-012		R-1 Δ