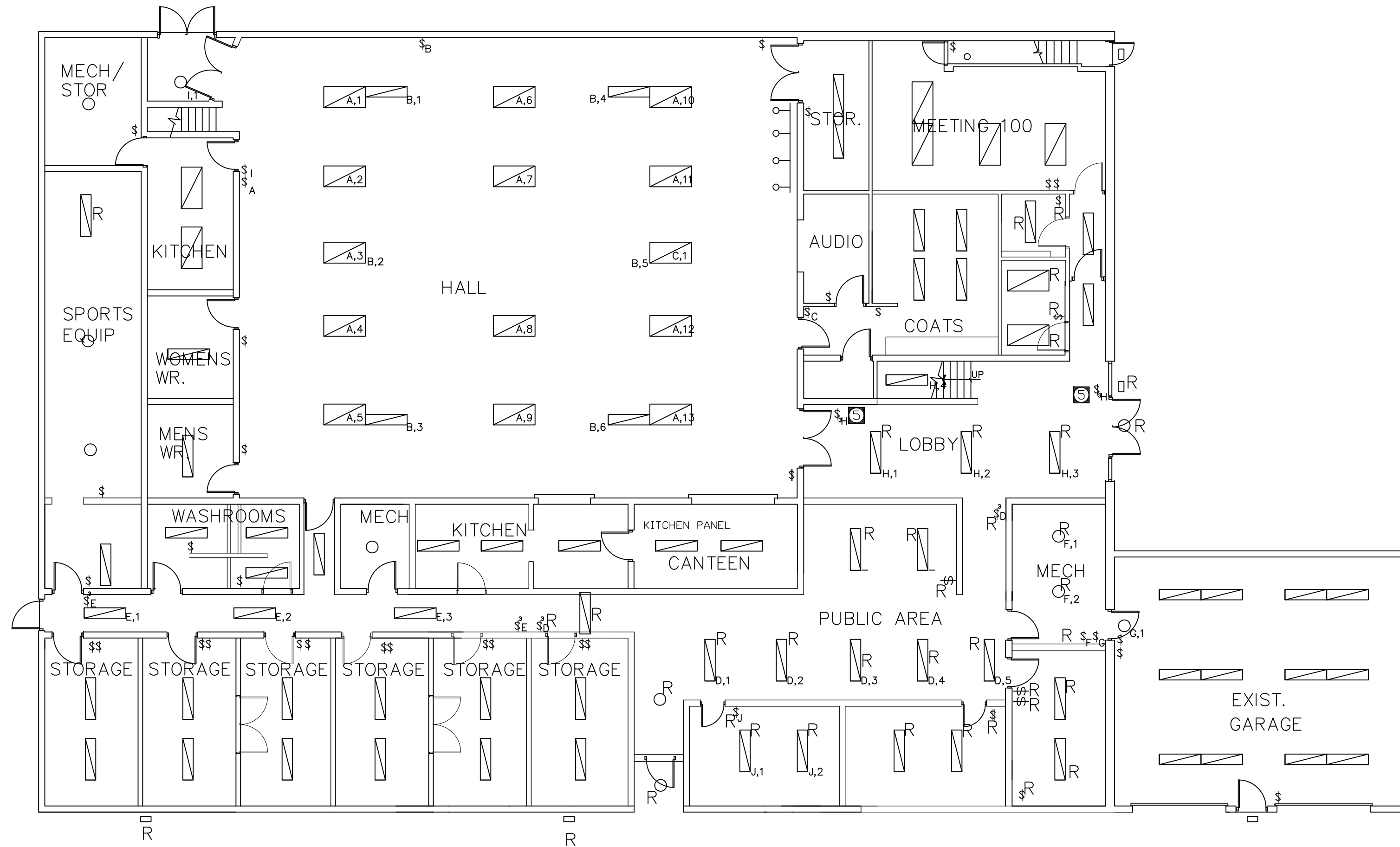


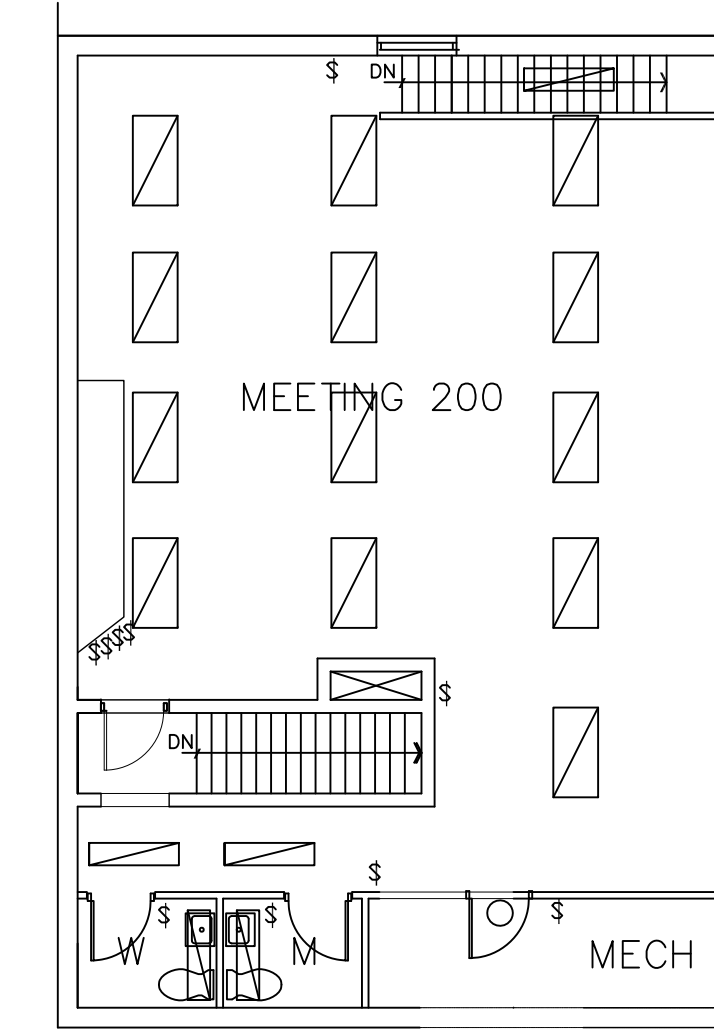
EXIST. SECOND FLR.
OFFICE PLAN
ABOVE KITCHEN

LEGEND

- POT LIGHT
- ▭ FLUORESCENT LIGHT
- EXTERIOR LIGHT FIXTURE
- ⊗ JUNCTION BOX
- ⊙ MOTOR
- ⊕ CEILING MOUNT FAN
- ⊕ RECEPTACLE
- ⊙ 1-WAY SWITCH
- ⊙ 3-WAY SWITCH
- ◀ CAT-6
- ◀ PHONE
- ⊙ RG-6 CO-AX CONNECTOR
- R TO BE REMOVED (INCLUDING ALL ASSOCIATED EQUIPMENT BACK TO THE POWER ORIGIN)



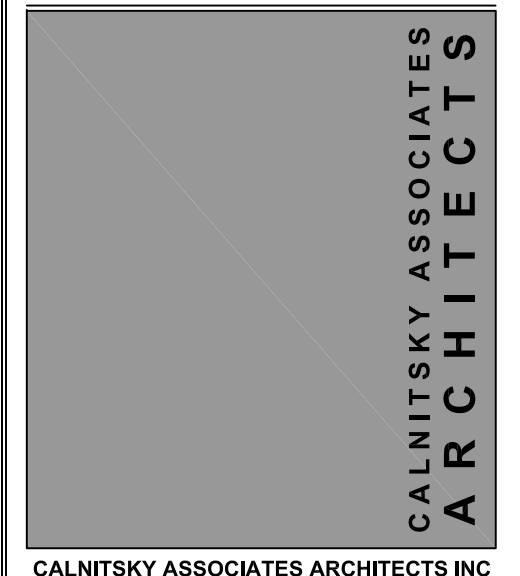
GENERAL NOTES



EXISTING
SECOND FLOOR

DRAWING NOTES

- ⊙ SEE E-3.1 FOR SWITCHING/WIRING OF NEW LIGHT FIXTURES

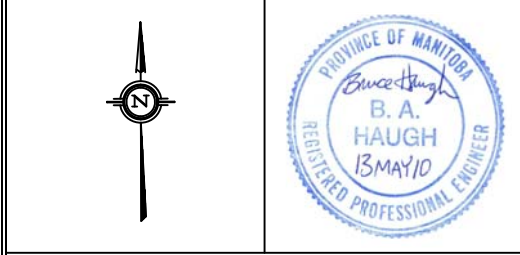


ARCHITECTURE | INTERIOR DESIGN
124 Nassau Street North Winnipeg, Manitoba R3L 2H1
Tel: (204) 453-8441 Fax: (204) 453-3392
E-mail: caa@escape.ca

This drawing is not intended to be an as-built or record drawing. The contractor is responsible for verifying the accuracy of the information on-site. If there is any information that is in error, the contractor shall record the discrepancy and contact the Engineer immediately with his findings.

DATE	NO.	DESCRIPTION	DRAWN BY
2010MAY13	0	ISSUE FOR TENDER	BH

REVISIONS



JOB TITLE:
ADDITION &
RENOVATION OF
WINAKWA COMMUNITY
CENTRE
980 WINAKWA ROAD
WINNIPEG, MB

EXISTING LIGHT DISTRIBUTION

SCALE:	DATE:	DRAWING NO.:
N.T.S.	2010 MAY 13	E-1.2
DRAWN B.H.	DESIGN B.H.	CHECKED B.H.
FILE NO.:	PROJECT NO.:	
-	339-2010	