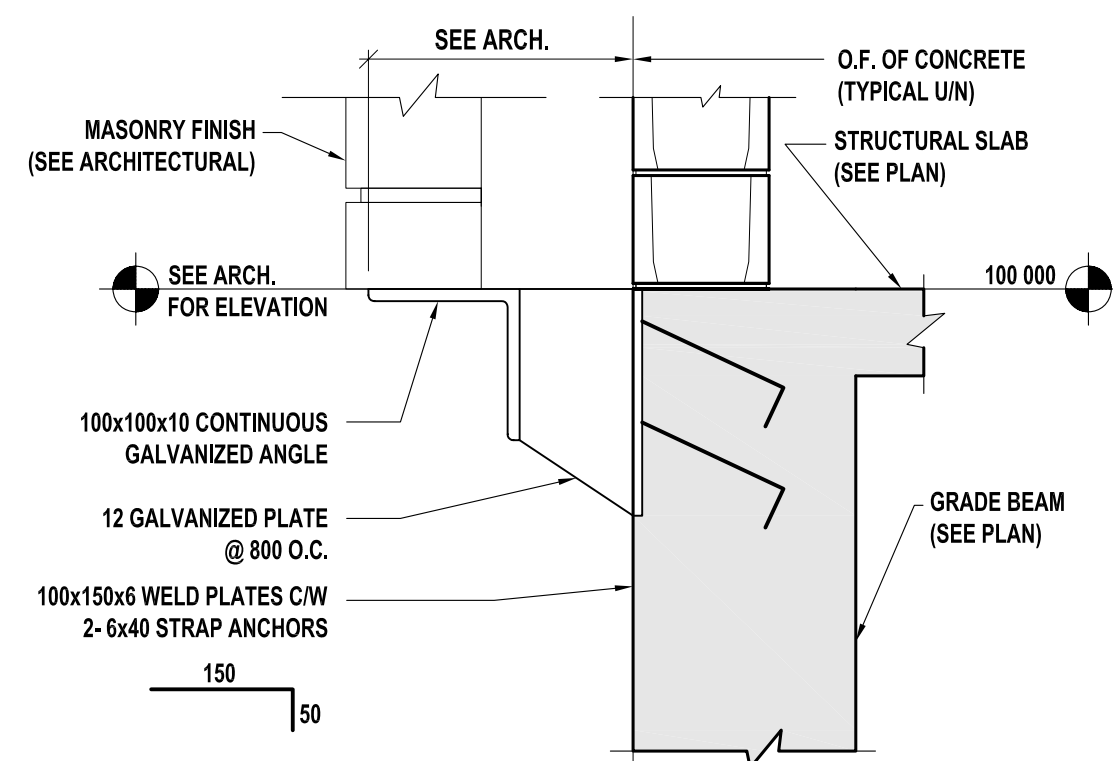


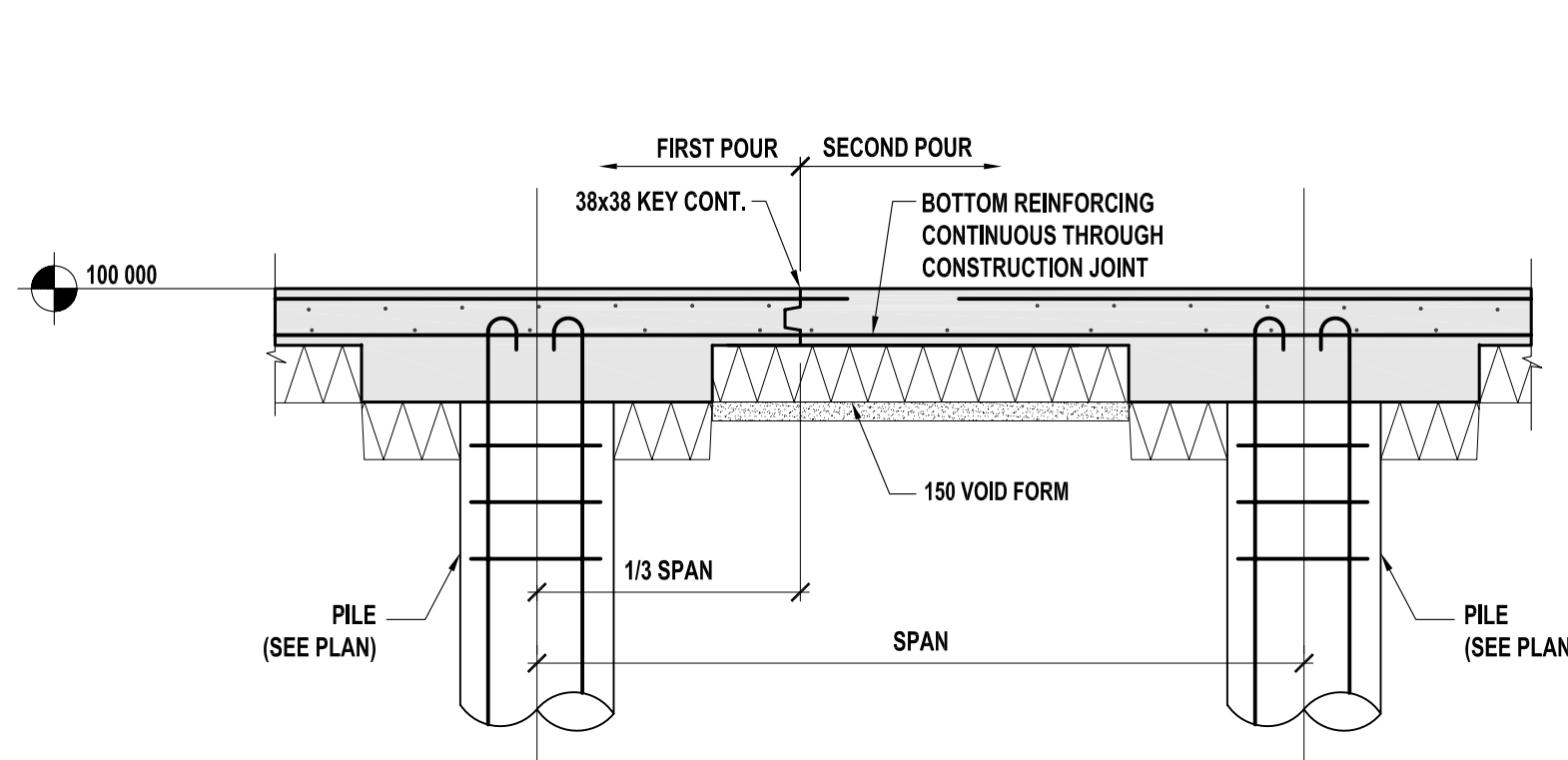
**1** TYPICAL GRADE BEAM CONSTRUCTION JOINT DETAIL

S1.2 S1.2 NOT TO SCALE



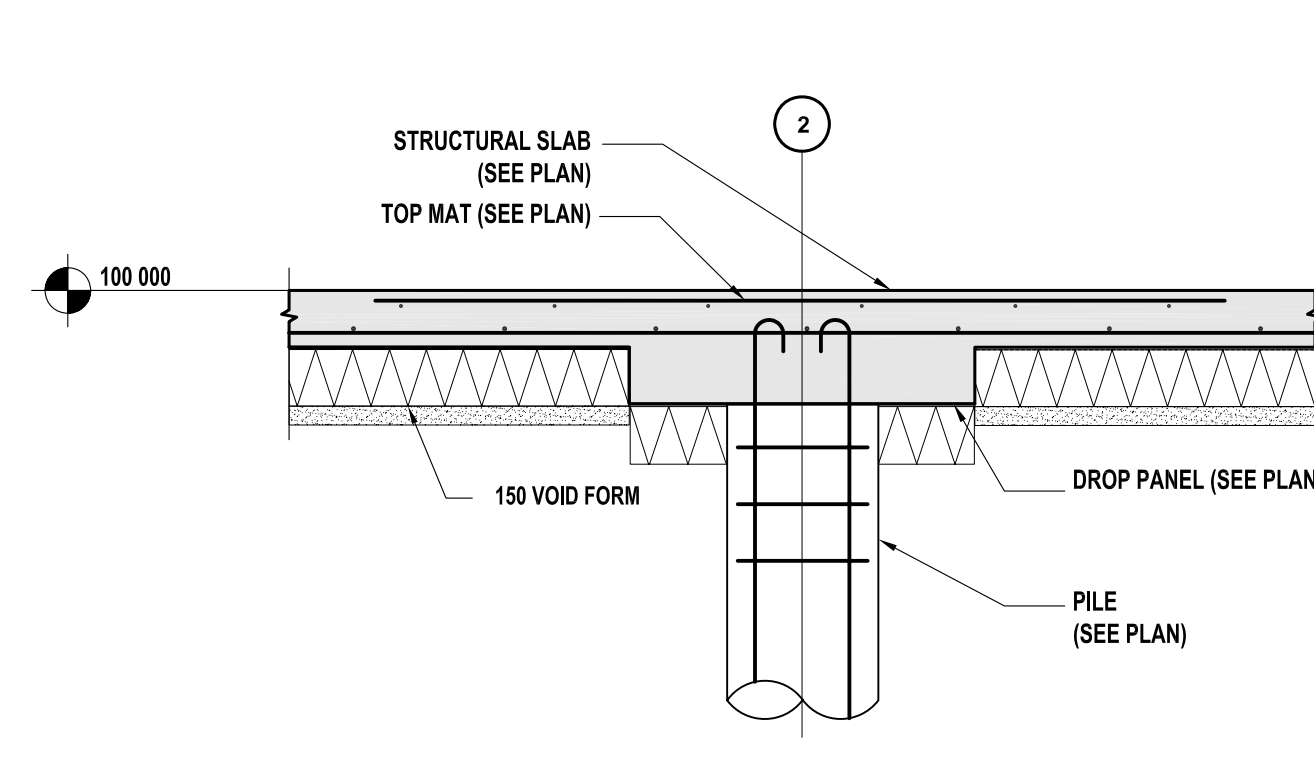
**2** TYPICAL BRICK SHELF ANGLE

S1.2 S1.2 NOT TO SCALE



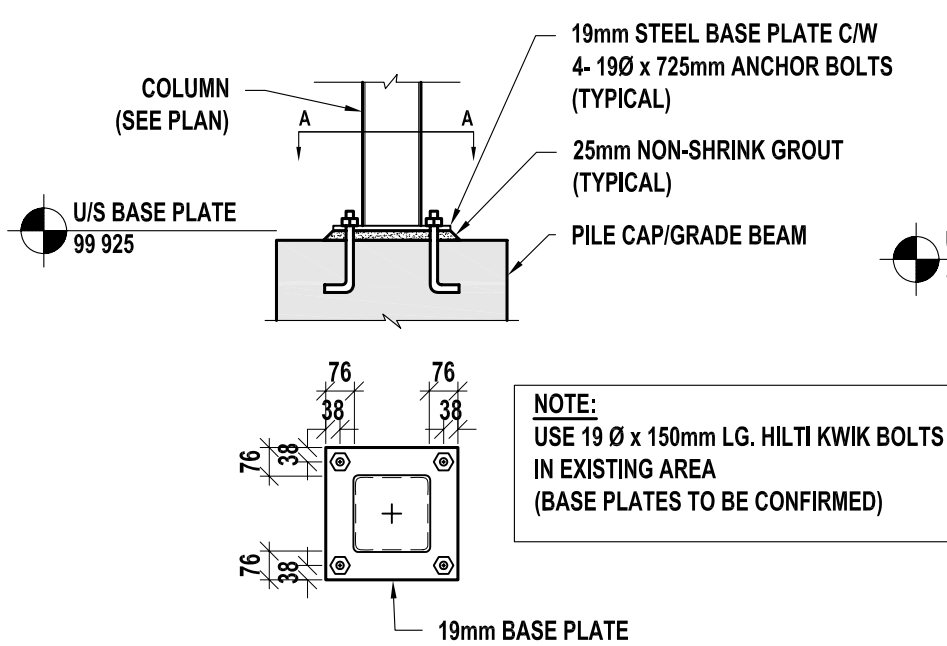
**3** TYP CONST. JOINT DETAIL WITH DROP PANEL

S1.2 S1.2 NOT TO SCALE



**4** TYPICAL SECTION

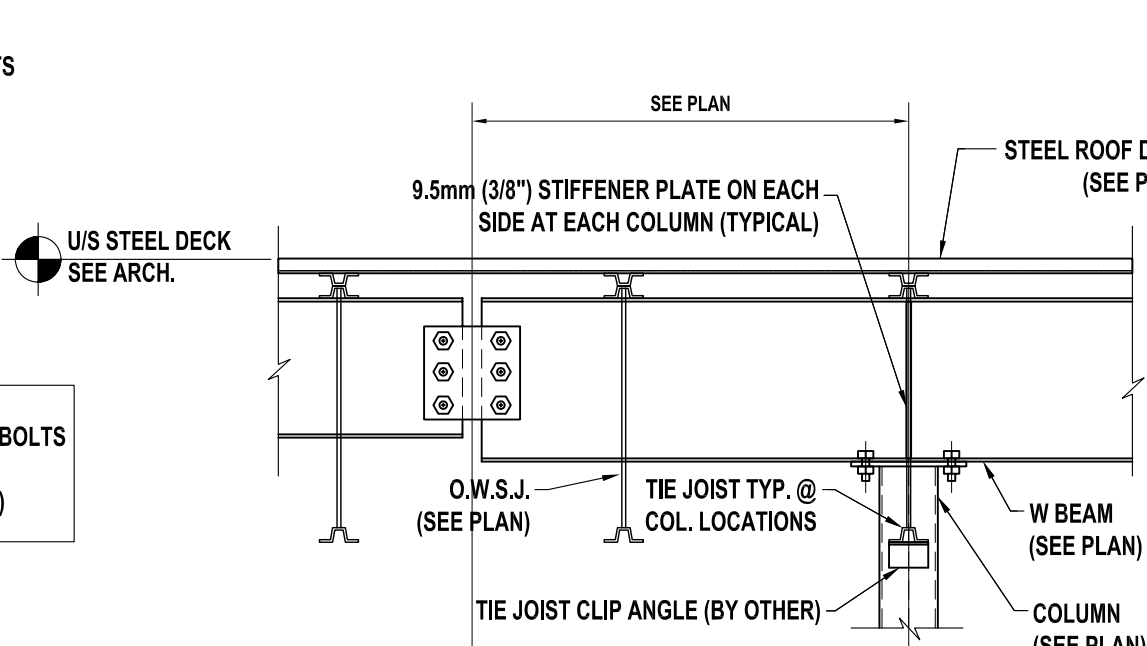
S1.2 S1.2 NOT TO SCALE



**VIEW A-A**

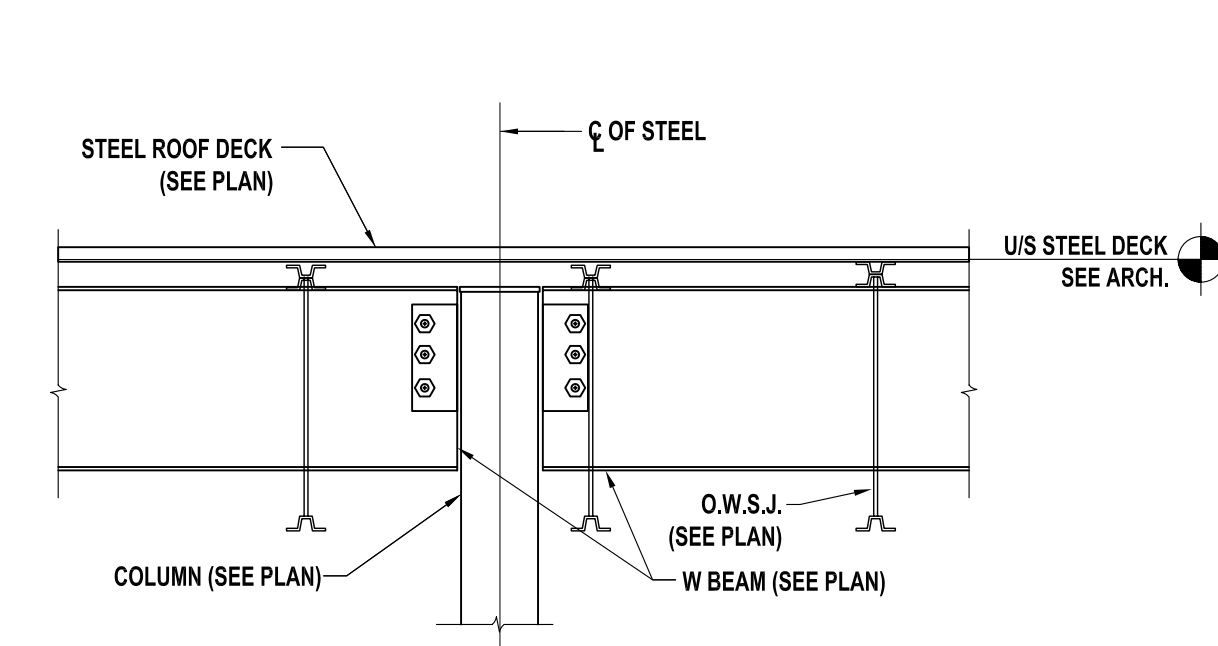
**5** TYPICAL COLUMN DETAIL U/N

S1.2 S1.2 NOT TO SCALE



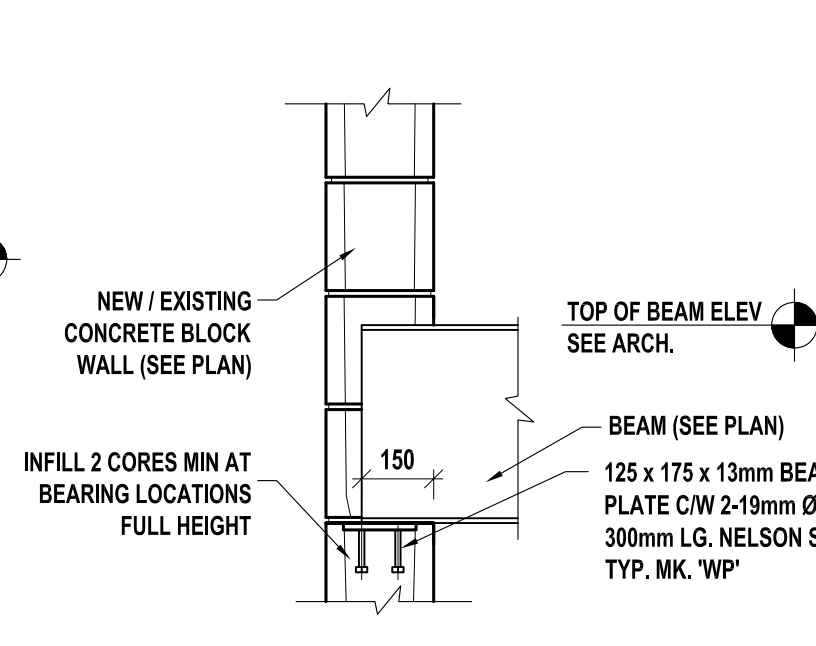
**6** TYPICAL COLUMN DETAIL

S2.3 S1.2 NOT TO SCALE



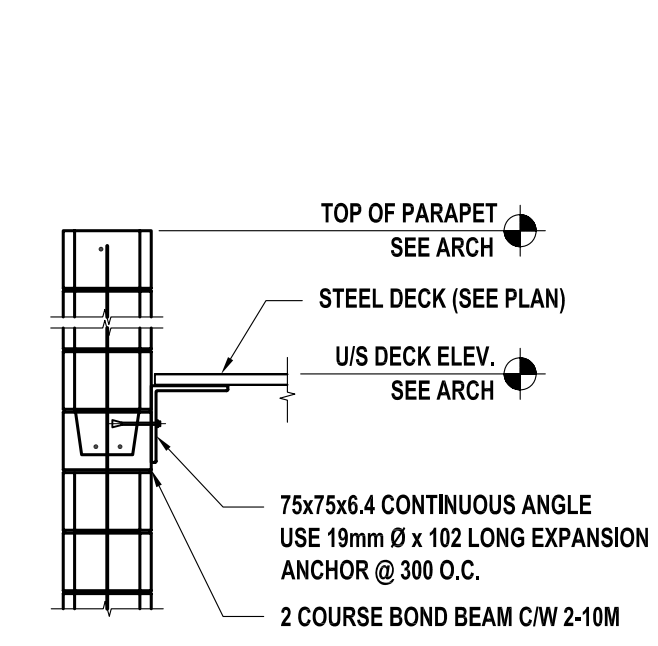
**7** DETAIL

S2.3 S1.2 NOT TO SCALE



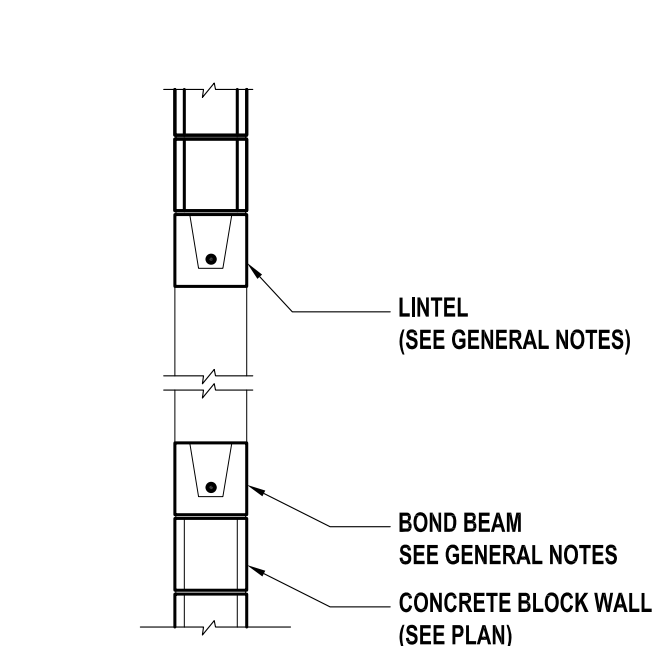
**8** BEAM BEARING DETAIL

S2.3 S1.2 NOT TO SCALE



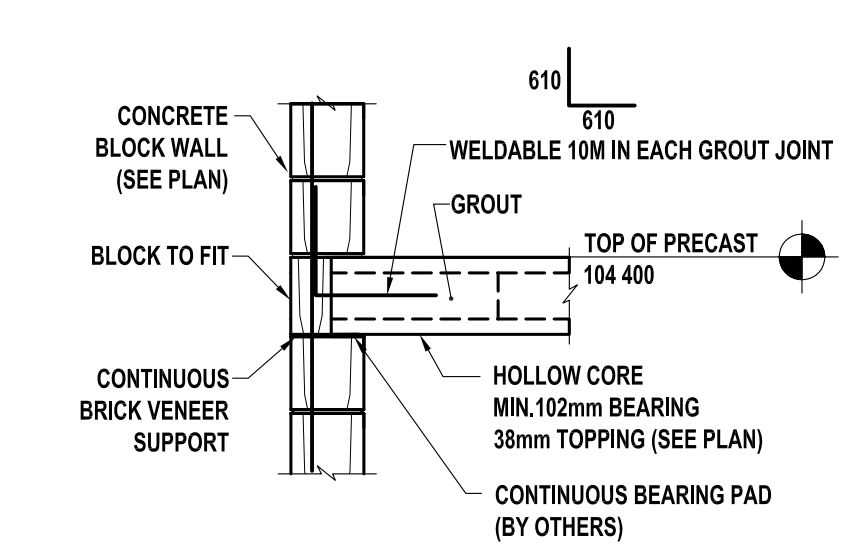
**9** TYPICAL ROOF DETAIL

S2.4 S1.2 NOT TO SCALE



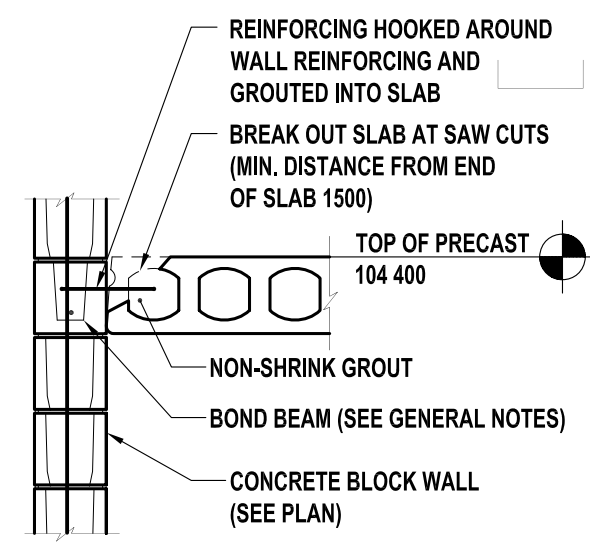
**10** TYPICAL DETAIL AT WINDOW

S2.3 S1.2 NOT TO SCALE



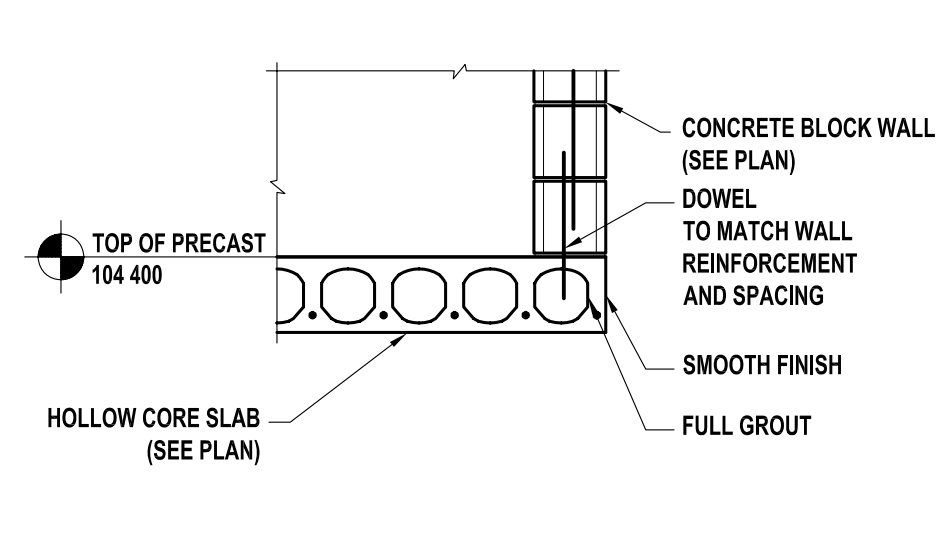
**11** TYPICAL SECTION

S2.3 S1.2 NOT TO SCALE



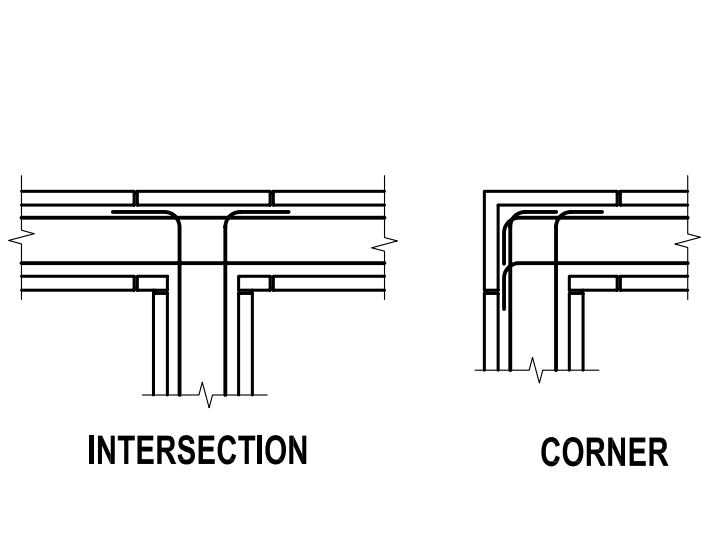
**12** TYPICAL DETAIL

S2.3 S1.2 NOT TO SCALE



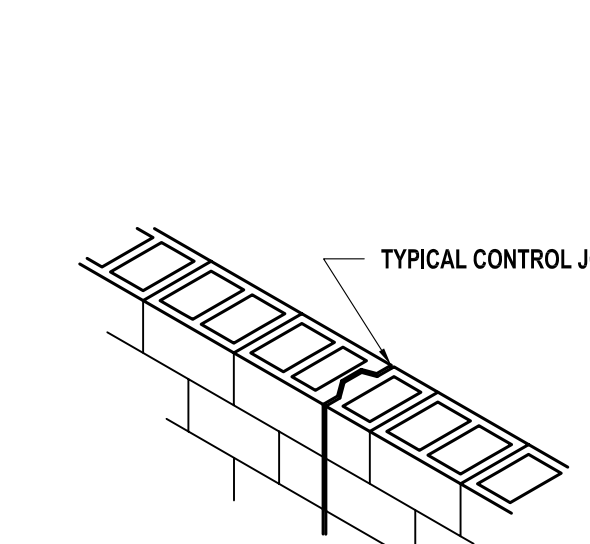
**13** TYPICAL WALL DETAIL ON HOLLOW CORE SLAB

S2.3 S1.2 NOT TO SCALE



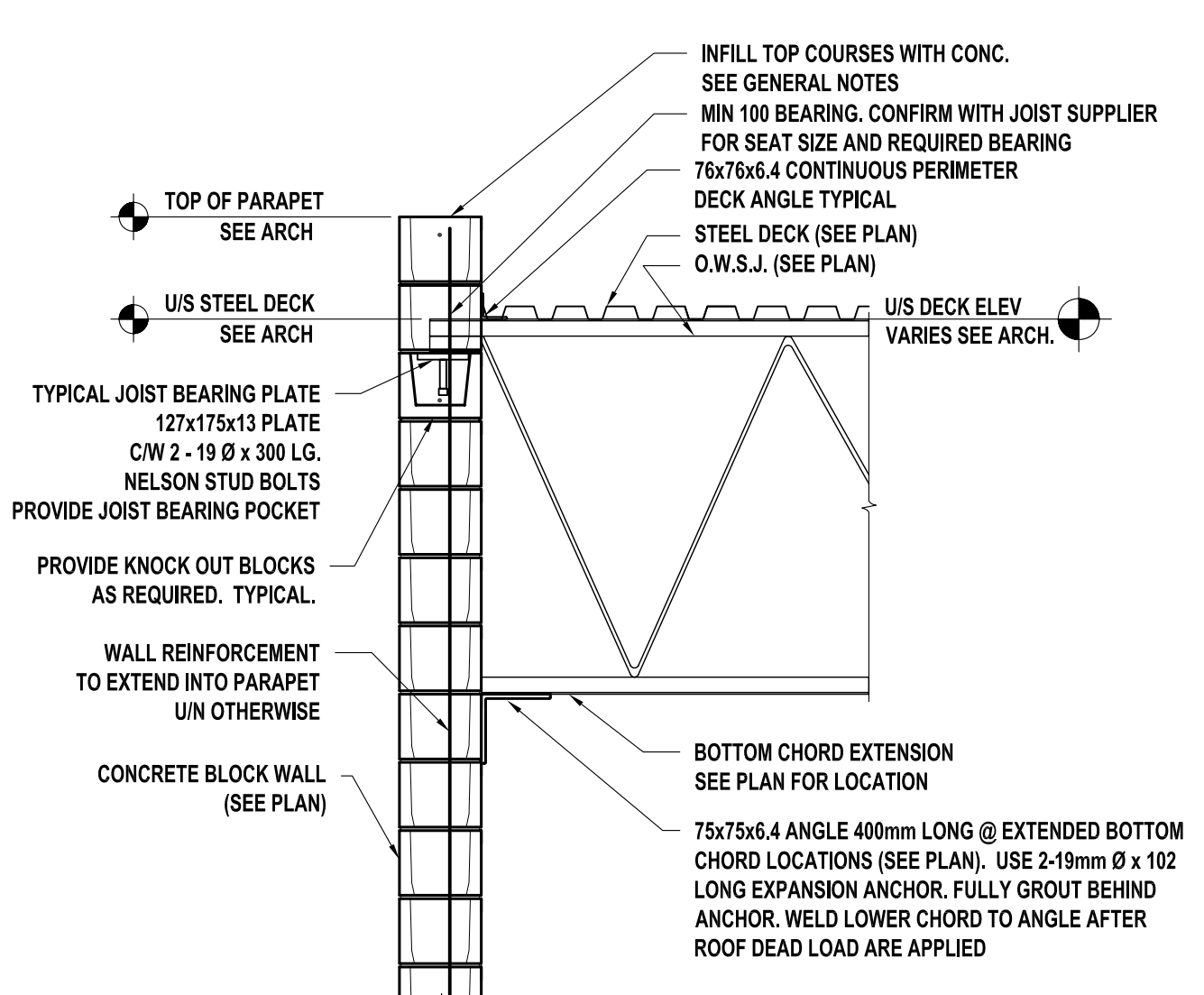
**14** BOND BEAM CORNER TYPICAL REINFORCEMENT

S1.2 S1.2 NOT TO SCALE



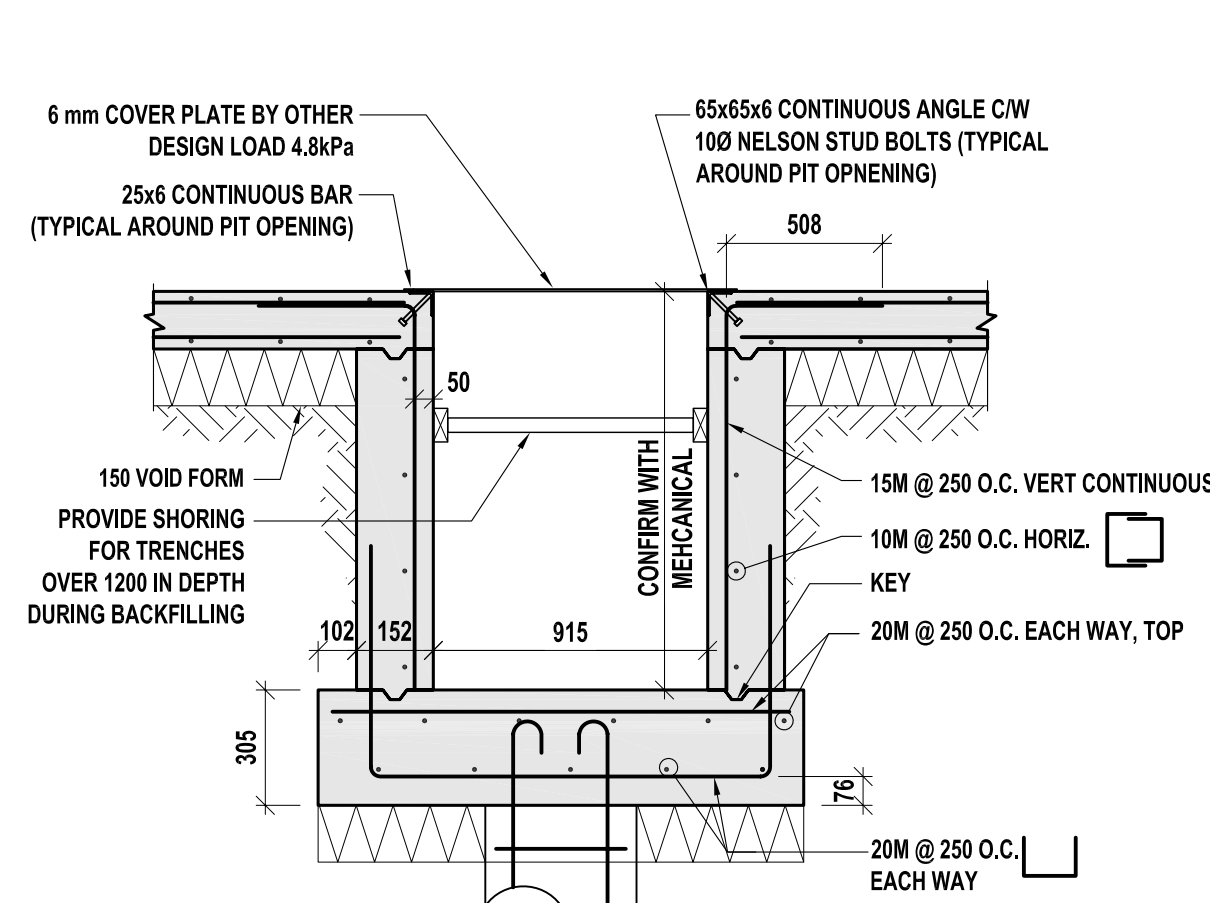
**15** TYPICAL CONTROL JOINT

S1.2 S1.2 NOT TO SCALE



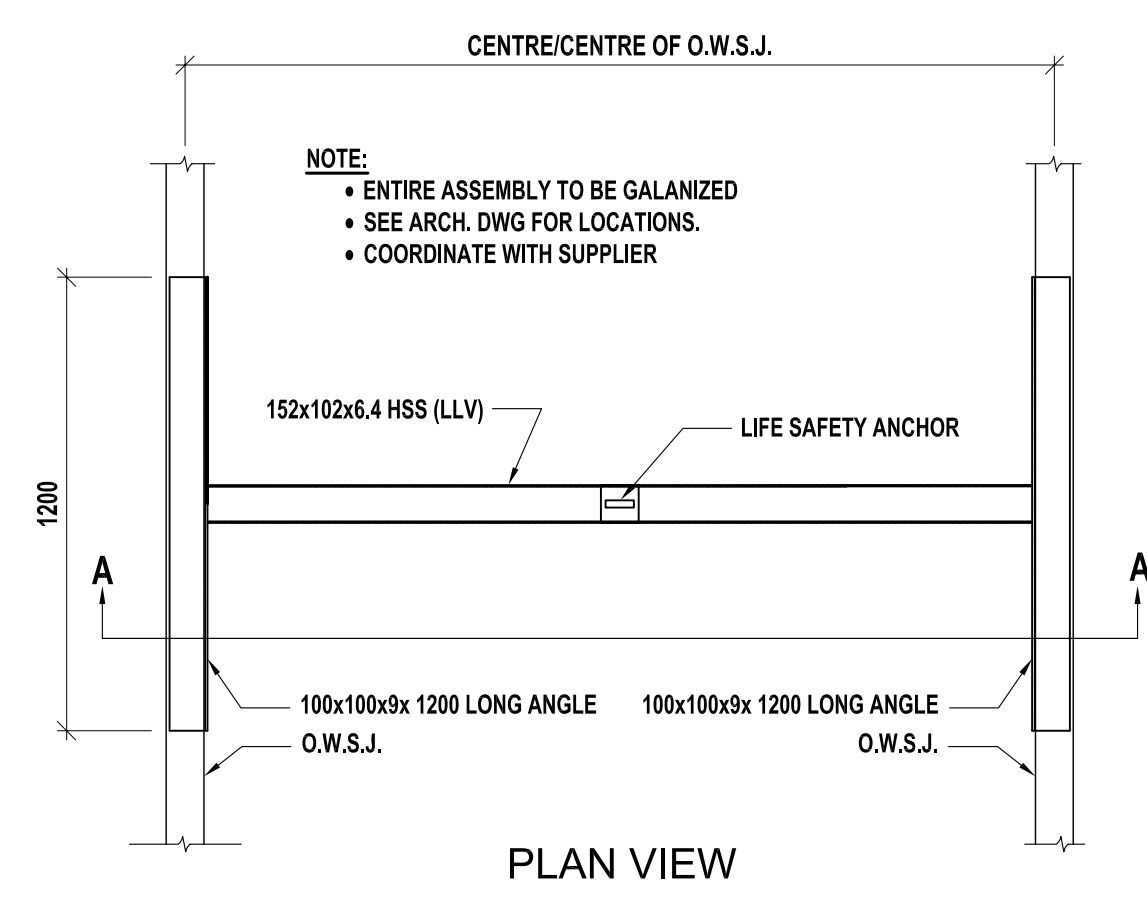
**16** TYPICAL DETAIL

S2.4 S1.2 NOT TO SCALE



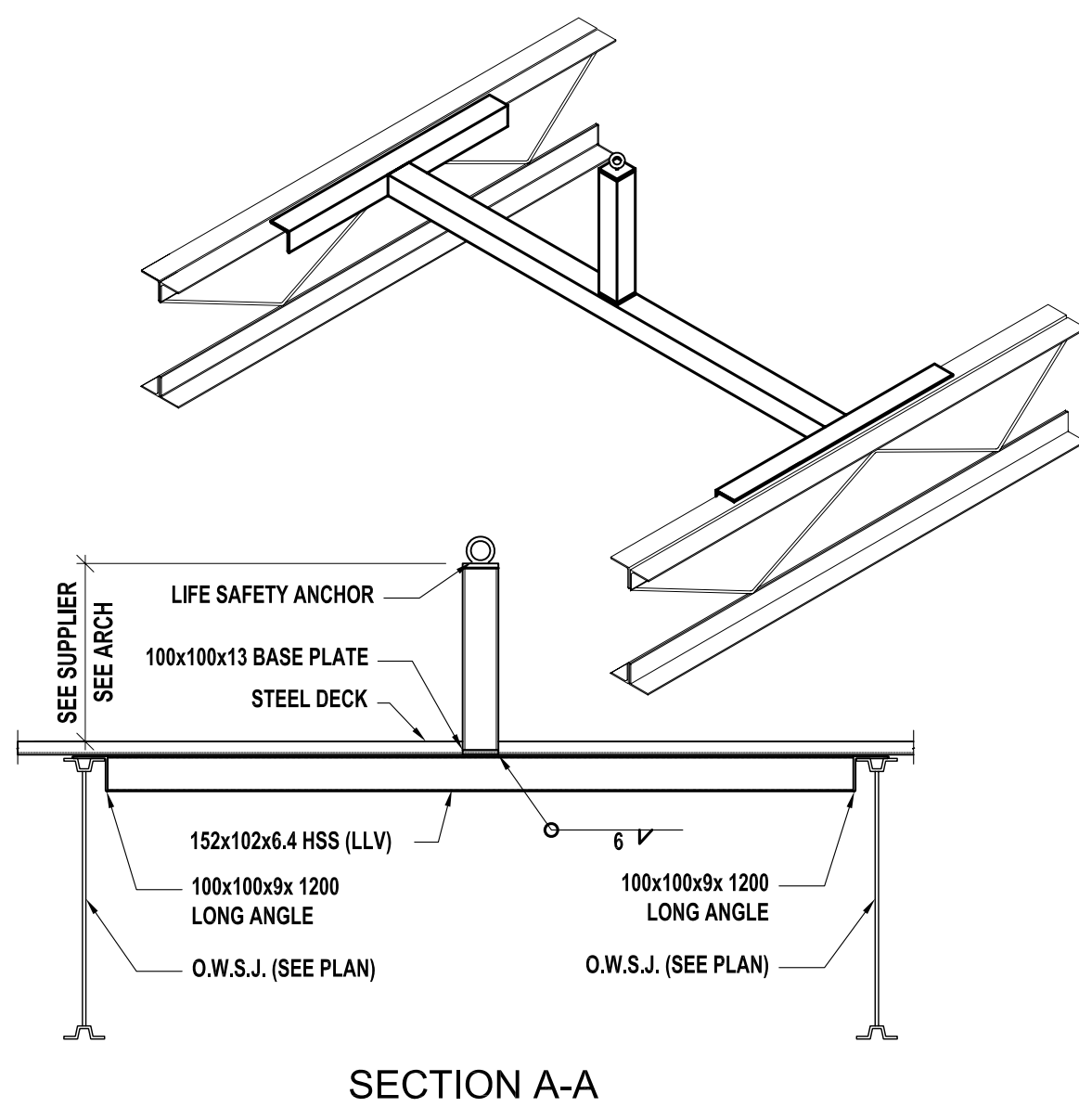
**17** TYPICAL SUMP PIT

S2.2 S1.2 NOT TO SCALE



**18** LIFE SAFETY ANCHOR

S2.3 S1.2 NOT TO SCALE



**SECTION A-A**

THE CONTRACTOR IS TO VERIFY DIMENSIONS AND DATA NOTED ON THE STRUCTURAL DRAWINGS WITH CONDITIONS ON THE SITE. CO-ORDINATE ALL DIMENSIONS WITH THE ARCHITECTURAL DRAWINGS, AND IS HELD RESPONSIBLE FOR REPORTING ANY DISCREPANCIES TO THE ENGINEER BEFORE PROCEEDING WITH THE WORK. VARIATIONS AND MODIFICATIONS TO WORK SHOWN ON THE STRUCTURAL DRAWINGS SHALL NOT BE CARRIED OUT WITHOUT WRITTEN PERMISSION FROM THE ENGINEER.

THIS DRAWING IS NOT TO BE SCALED.

ALL BEAMS, ANGLES AND MISCELLANEOUS METALS INDICATED ON ARCHITECTURAL, MECHANICAL AND/OR ELECTRICAL DRAWINGS BUT NOT SHOWN OR NOTED ON STRUCTURAL DRAWINGS, SHALL BE INCLUDED IN THE TENDER PRICE. THE CONTRACTOR IS RESPONSIBLE FOR CONFIRMING SIZES AND LOCATIONS OF THESE MEMBERS WITH BOTH THE ARCHITECT AND THE ENGINEER PRIOR TO TENDER CLOSING.

NO.	REVISION	DATE	BY
0	ISSUED FOR TENDER	2010.05.13	MM

THIS DRAWING IS THE EXCLUSIVE PROPERTY OF THE ARCHITECT AND CAN BE REPRODUCED ONLY WITH THE PERMISSION OF THE ARCHITECT. IN WHICH CASE THE REPRODUCTION MUST BEAR THE NAME OF THE ARCHITECT.

THIS DRAWING SHALL NOT BE SCALED. FOLLOW GIVEN DIMENSIONS ONLY.

THE CONTRACTOR SHALL SATISFY HIMSELF THAT ALL DIMENSIONS AND INFORMATION SHOWN ARE CORRECT.

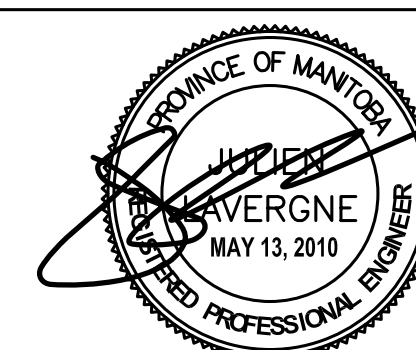
PRIOR TO COMMENCEMENT OF WORK REPORT ANY DISCREPANCIES TO THE ARCHITECT.

VARIATIONS AND MODIFICATIONS TO WORK SHOWN WILL NOT BE ALLOWED WITHOUT WRITTEN PERMISSION OF THE ARCHITECT.

CONSULTANT

**Lavergne Draward & Associates Inc.**  
402-138 Portage Avenue East  
Winnipeg, Manitoba  
R3C 0A1  
Tel 204 947-2222  
Fax 204 947-2522  
E mail general@ldaseng.ca  
Web www.ldaseng.ca  
[PROJECT # 9132]

SEAL



**APEGM**  
Certificate of Authorization  
Lavergne Draward & Associates Inc.  
No. 1912 Date: MAY 13, 2010

**CALNITSKY ASSOCIATES ARCHITECTS**

CALNITSKY ASSOCIATES ARCHITECTS INC.  
ARCHITECTURE | INTERIOR DESIGN  
124 Nassau Street North Winnipeg, Manitoba R3L 2H1  
Tel: (204) 453-6441 Fax: (204) 453-3392  
E-mail: caa@escape.ca

PROJECT TITLE

**ADDITION & RENOVATION OF WINAKWA COMMUNITY CENTRE**

980 WINAKWA RD, WINNIPEG

SHEET TITLE

TYPICAL DETAILS

DRAWN BY	SCALE	SHEET NUMBER
AP/KB/JN	AS SHOWN	<b>S1.2</b>
CHECKED BY	DATE	
JL/MM	2010.05.13	
PROJECT NO.	REV. DATE	REV. NO.
09-012		0