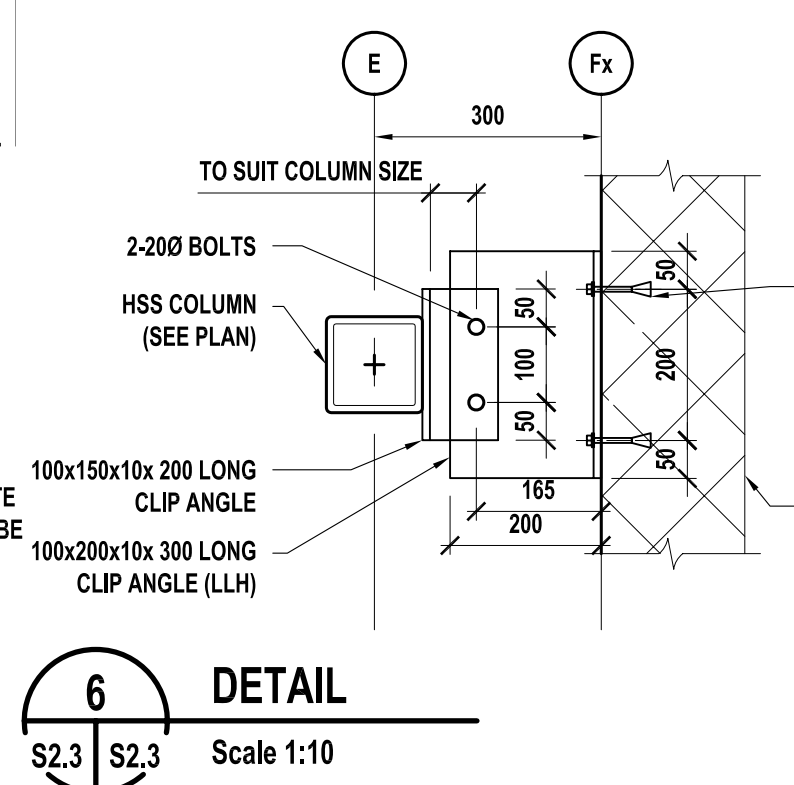
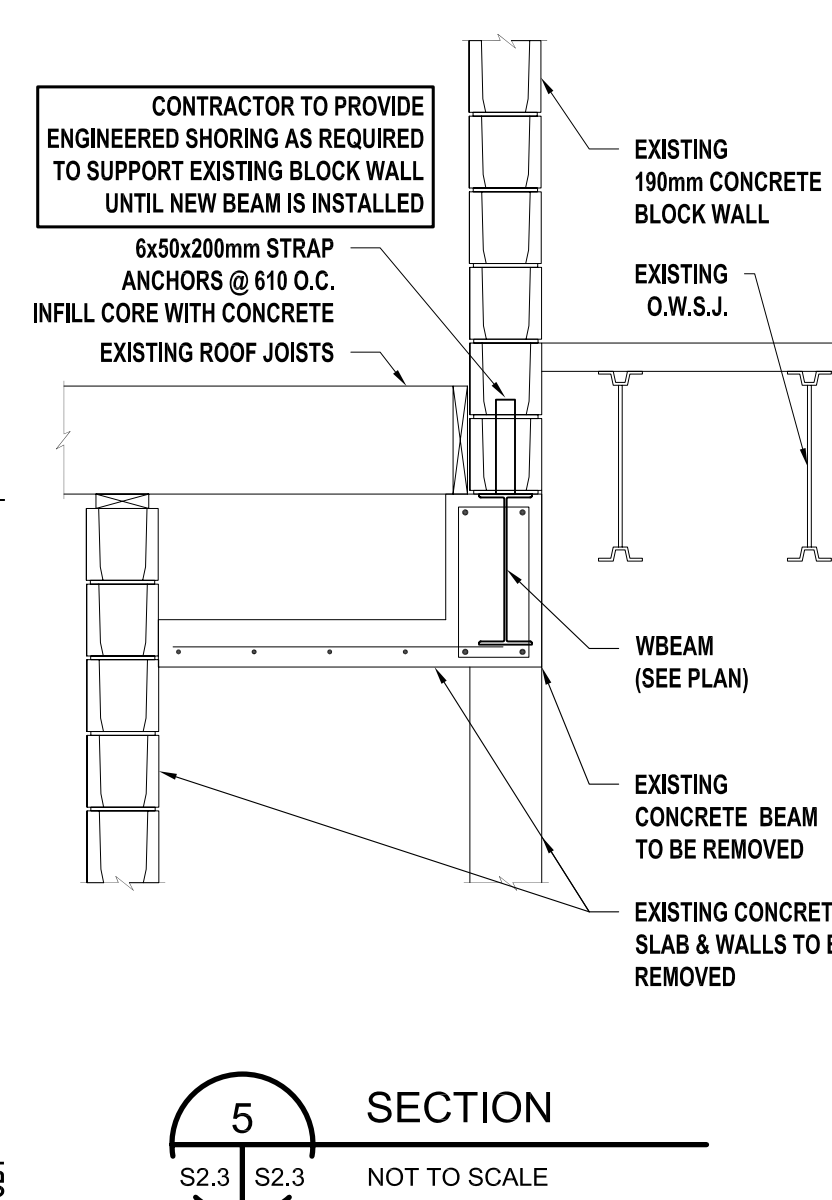


- FRAMING PLAN NOTES**
- ROOF DEAD LOAD = 1.3 kPa
 - U/S STEEL DECK ELEVATION VARIES
 - SNOW LOADS AS PER GENERAL NOTES. SNOW BUILD UP SHOWN ON PLAN IF EXIST.
 - GRIDS ARE CENTRE LINE OF W BEAMS AND COLUMNS TYPICAL UN.
 - FRAME MECHANICAL OPENINGS OR ACCESS HATCHES WITH 102x102x9.5 ANGLE (TYPICAL) CONFIRM LOCATIONS WITH ARCHITECTURAL AND MECHANICAL DRAWINGS
 - STEEL DECK TO BE 38x22 DECK
 - VERIFY MECHANICAL EQUIPMENTS LOCATION AND LOADS WITH MECHANICAL DWG.
 - SEE ARCHITECTURAL DWG. FOR SLOPES AND ROOF DRAIN LOCATIONS
 - CONTRACTOR TO VERIFY THAT EXISTING STRUCTURE FRAMING MATCH THAT SHOWN ON PLAN. CONTRACTOR TO REPORT ANY DISCREPANCIES IMMEDIATELY TO ENGINEER BEFORE PROCEEDING.
 - CONTRACTOR NOT TO CUT OR DRILL INTO EXISTING STRUCTURE WITHOUT CONSULTING WITH THE ENGINEER UNLESS NOTED ON PLANS
 - FULLY GROUT CONCRETE BLOCK CORES BEHIND WELD PLATES, ANCHORS AND/OR WALL PENETRATIONS



COLUMN SCHEDULE		
MARK	DESCRIPTION	U/S BASE PLATE ELEVATION UNO.
C1	HSS 127 x 127 x 6.4	99 725
C2	HSS 102 x 102 x 8.0	99 900
C3	HSS 152 x 152 x 9.5	99 725

CONCRETE BLOCK WALL SCHEDULE		
MARK	DESCRIPTION	
CB1	190mm CONCRETE BLOCK WALL REINFORCING: 1-15M BAR @ 600mm O.C. BOND BEAM @ 2000 O.C. W/1-15M REINF. PROVIDE KNOCK-OUT BLOCK AS REQ'D.	
CB2	240mm CONCRETE BLOCK WALL REINFORCING: 1-15M BAR @ 400mm O.C. BOND BEAM @ 1750 O.C. W/1-15M REINF. PROVIDE KNOCK-OUT BLOCK AS REQ'D.	
CB3	190mm LIGHT WEIGHT CONC. BLOCK WALL REINFORCING: 1-15M BAR @ 800mm O.C. BOND BEAM @ 2000 O.C. W/1-10M REINF. PROVIDE KNOCK-OUT BLOCK AS REQ'D.	

THE CONTRACTOR IS TO VERIFY DIMENSIONS AND DATA NOTED ON THE STRUCTURAL DRAWINGS WITH CONDITIONS ON THE SITE. CO-ORDINATE ALL DIMENSIONS WITH THE ARCHITECTURAL DRAWINGS, AND IS HELD RESPONSIBLE FOR REPORTING ANY DISCREPANCIES TO THE ENGINEER BEFORE PROCEEDING WITH THE WORK. VARIATIONS AND MODIFICATIONS TO WORK SHOWN ON THE STRUCTURAL DRAWINGS SHALL NOT BE CARRIED OUT WITHOUT WRITTEN PERMISSION FROM THE ENGINEER.

THIS DRAWING IS NOT TO BE SCALED.

ALL BEAMS, ANGLES AND MISCELLANEOUS METALS INDICATED ON ARCHITECTURAL, MECHANICAL AND/OR ELECTRICAL DRAWINGS BUT NOT SHOWN OR NOTED ON STRUCTURAL DRAWINGS, SHALL BE INCLUDED IN THE TENDER PRICE. THE CONTRACTOR IS RESPONSIBLE FOR CONFIRMING SIZES AND LOCATIONS OF THESE MEMBERS WITH BOTH THE ARCHITECT AND THE ENGINEER PRIOR TO TENDER CLOSING.

NO.	REVISION	DATE	BY
0	ISSUED FOR TENDER	2010.05.13	MM

THIS DRAWING IS THE EXCLUSIVE PROPERTY OF THE ARCHITECT AND CAN BE REPRODUCED ONLY WITH THE PERMISSION OF THE ARCHITECT. IN WHICH CASE THE REPRODUCTION MUST BEAR THE NAME OF THE ARCHITECT.

THIS DRAWING SHALL NOT BE SCALED. FOLLOW GIVEN DIMENSIONS ONLY.

THE CONTRACTOR SHALL SATISFY HIMSELF THAT ALL DIMENSIONS AND INFORMATION SHOWN ARE CORRECT.

PRIOR TO COMMENCEMENT OF WORK REPORT ANY DISCREPANCIES TO THE ARCHITECT.

VARIATIONS AND MODIFICATIONS TO WORK SHOWN WILL NOT BE ALLOWED WITHOUT WRITTEN PERMISSION OF THE ARCHITECT.

CONSULTANT

Lavergne Draward & Associates Inc.
402-138 Portage Avenue East
Winnipeg, Manitoba
R3C 0A1
Tel 204 947-2222
Fax 204 947-2522
E-mail general@lidaeng.ca
Web www.lidaeng.ca
Project # 9132

SEAL

PROVINCE OF MANITOBA
LAVERGNE
MAY 13, 2010
REGISTERED PROFESSIONAL ENGINEER

APCM
Certificate of Authorization
Lavergne Draward & Associates Inc.
No. 1912 Date: MAY 13, 2010

CALNITSKY ASSOCIATES ARCHITECTS

CALNITSKY ASSOCIATES ARCHITECTS INC.
ARCHITECTURE INTERIOR DESIGN
124 Nassau Street North Winnipeg, Manitoba R3L 2H1
Tel: (204) 453-6441 Fax: (204) 453-3392
E-mail: caa@escape.ca

PROJECT TITLE

ADDITION & RENOVATION OF WINAKWA COMMUNITY CENTRE

980 WINAKWA RD, WINNIPEG

SHEET TITLE

LOW ROOF/MEZZANINE FRAMING PLAN

DRAWN BY	SCALE	SHEET NUMBER
AP/KB/JN	AS SHOWN	S2.3
CHECKED BY	DATE	
JL/MM	2010.05.13	
PROJECT NO.	REV. DATE	REV. NO.
09-012		0