

- CONSTRUCTION NOTES:**
1. LOCATION OF EXISTING SERVICES ARE TO BE CONFIRMED IN THE FIELD BY THE CONTRACTOR AND REVIEWED BY THE ENGINEER.
 2. CONNECTION TO EXISTING EQUIPMENT TO BE VERIFIED IN THE FIELD BY THE CONTRACTOR AND REVIEWED BY THE ENGINEER.
 3. LIMITS OF SIDEWALK RENEWALS TO BE FINALIZED IN THE FIELD BY THE CONTRACT ADMINISTRATOR AND REVIEWED BY THE ENGINEER.
 4. REMOVE EXISTING LIGHT POLE AND INSTALL NEW HANDHOLE. EXTEND WIRES TO NEW POLE LOCATIONS (TYPICAL FOR TWO LOCATIONS).
 5. NEW POLE AND FIXTURE IN EXISTING LOCATION

METRIC

WHOLE NUMBERS INDICATE MILLIMETRES
DECIMALIZED NUMBERS INDICATE METRES.

- WARNING**
- IF POWER EQUIPMENT OR EXPLOSIVES ARE TO BE USED FOR EXCAVATION ON THIS PROJECT THE CONTRACTOR MUST:
1. NOTIFY THE GAS COMPANY OF THE PROPOSED LOCATION OF EXCAVATION.
 2. TAKE PRECAUTION TO AVOID DAMAGE TO GAS COMPANY INSTALLATIONS. SEE PROVINCIAL REGULATION 210/72 FOR DETAILS.

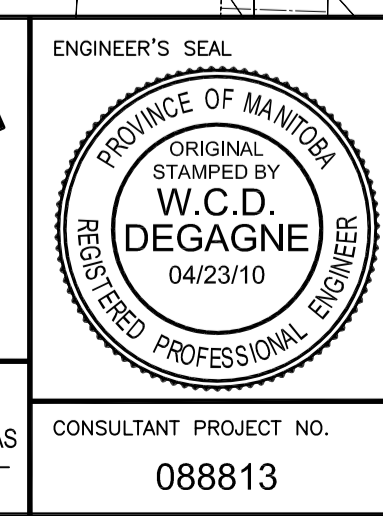
G:\CAD\088813\Contract\Current\Electrical\TRANSIT PARKING LOT\ES-E6-E7 - Parking Lot_Receptacles.dwg



LOCATION UNDERGROUND	APPROVED STRUCTURES	B.M. ELEV.
SUPV. U/G STRUCTURES COMMITTEE	DATE	
NOTE: LOCATION OF UNDERGROUND STRUCTURES AS SHOWN ARE BASED ON THE BEST INFORMATION AVAILABLE, BUT NO GUARANTEE IS GIVEN THAT ALL EXISTING UTILITIES ARE SHOWN OR THAT THE GIVEN LOCATIONS ARE EXACT. CONFIRMATION OF EXISTENCE AND EXACT LOCATION OF ALL SERVICES MUST BE OBTAINED FROM THE INDIVIDUAL UTILITIES BEFORE PROCEEDING WITH CONSTRUCTION.		
1	ADDENDUM #2	04/23/10 MCL
NO.	REVISIONS	DATE BY

DESIGNED BY	ML
DRAWN BY	JV
CHECKED BY	ORIGINAL SIGNED BY AA
APPROVED BY	ORIGINAL SIGNED BY WCCD
HOR. SCALE	
VERTICAL	
DATE	04/23/10

RELEASED FOR CONSTRUCTION	ORIGINAL SIGNED BY RANDY FINGAS	DATE	04/23/10
---------------------------	---------------------------------	------	----------



THE CITY OF WINNIPEG TRANSIT DEPARTMENT

Winnipeg

SOUTHWEST RAPID TRANSIT CORRIDOR - STAGE 1
TRANSITWAY CONSTRUCTION, LANDSCAPING & ASSOCIATED WORKS

ELECTRICAL - TRANSIT BASE PARKING LOT LIGHTING INSTALLATION

CITY DRAWING NUMBER: P-3317-83
SHEET 83 OF 84
CONSULTANT DRAWING NUMBER: C6-C3062-T

CONSULTANT PROJECT NO.: 088813