

SOUTHBOUND TO JUBILEE AVENUE					
CONTROL POINT	STATION	COORDINATES		CURVE DATA	PARAMETER
		NORTHING	EASTING		
P.O.T.	0+100.000	5524010.481	632923.468	R.	50.000
T.C.	0+120.530	5524028.560	632933.189	Δc	81°21'39"
C.T.	0+191.530	5524092.220	632919.177	Tc	42.977
				L.	71.001
				L.C.	65.184

NORTHBOUND FROM JUBILEE AVENUE					
CONTROL POINT	STATION	COORDINATES		CURVE DATA	PARAMETER
		NORTHING	EASTING		
P.O.T.	0+076.695	5523995.072	632971.618	R.	100.000
T.C.	0+103.863	5524021.861	632967.098	Δc	43°3'101"
C.T.	0+179.815	5524085.186	632928.542	Tc	39.913
P.O.T.	0+230.841	5524115.828	632887.740	L.	75.952
				L.C.	74.139

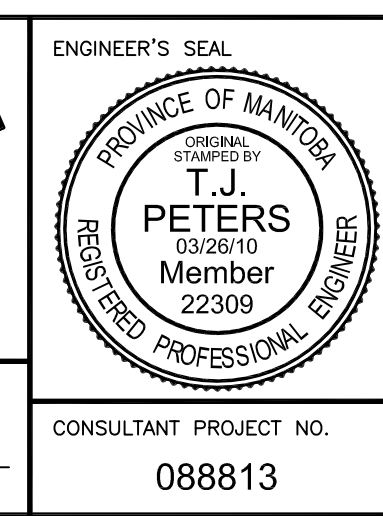
TRANSITWAY						
CONTROL POINT	STATION	COORDINATES		CURVE DATA	SPIRAL CURVE DATA	
		NORTHING	EASTING		PARAMETER	S1
P.O.T.	9+777.777			R.	1200.000	LENGTH 35.00
T.S.	9+915.263	5524100.275	632876.060	Δc	15°45'48"	THETA -1200.000°5008"
S.C.	9+950.263	5524128.363	632896.941	Tc	166.124	S. TANGENT 204.9411.67
				L.	330.149	L. TANGENT 23.33
				L.C.	329.109	



LOCATION UNDERGROUND	APPROVED STRUCTURES	B.M. ELEV.
SUPV. U/G STRUCTURES COMMITTEE	DATE	
NOTE: LOCATION OF UNDERGROUND STRUCTURES AS SHOWN ARE BASED ON THE BEST INFORMATION AVAILABLE, BUT NO GUARANTEE IS GIVEN THAT ALL EXISTING UTILITIES ARE SHOWN OR THAT THE GIVEN LOCATIONS ARE EXACT. CONFIRMATION OF EXISTENCE AND EXACT LOCATION OF ALL SERVICES MUST BE OBTAINED FROM THE INDIVIDUAL UTILITIES BEFORE PROCEEDING WITH CONSTRUCTION.		

NO.	REVISIONS	DATE	BY
2	ISSUED FOR TENDER	03/26/10	TJP
1	ISSUED FOR 75% REVIEW	03/03/10	TJP

DESIGNED BY	RTD
DRAWN BY	TJH
CHECKED BY	ORIGINAL SIGNED BY TARAN J. PETERS
APPROVED BY	ORIGINAL SIGNED BY DAVE P. KRAHN
HOR. SCALE	1 : 500
VERTICAL	
DATE	03/26/10



		CITY DRAWING NUMBER P-3317-11
SOUTH WEST RAPID TRANSIT CORRIDOR - STAGE 1 TRANSITWAY CONSTRUCTION, LANDSCAPING & ASSOCIATED WORKS		SHEET 11 OF 72
HORIZ. GEOMETRY - STA. 9+915 TO 10+075 & JUBILEE AVE.		CONSULTANT DRAWING NUMBER C6-C3001-T

G:\CAD\088813\Contract\Contract_6-Busway\Current\Roadway\C6-300-Control-Line-Geometry.dwg