

FORT ROUGE STATION TRANSITWAY ACCESS

CONTROL POINT	STATION	COORDINATES		PARAMETER	CURVE DATA
		NORTHING	EASTING		
P.O.T.	0+100	5524932.507	633244.047	R.	17.000
T.C.	0+117.649	5524924.630	633259.841	Δc	60°00'00"
C.T.	0+135.451	5524925.665	633276.809	Tc	9.815
P.O.T.	0+149.848	5524933.609	633288.816	L.	17.802
				L.C.	17.000

FORT ROUGE STATION

CONTROL POINT	STATION	COORDINATES		PARAMETER	CURVE DATA	
		NORTHING	EASTING		(10)	(11)
P.O.T.	0+112.825	5524966.149	633449.539	R.	40.000	15.000
T.C.	0+221.065	5524914.090	633354.640	Δc	75°15'26"	70°00'00"
C.T.	0+273.605	5524921.630	633306.382	Tc	30.836	10.503
T.C.	0+304.322	5524943.915	633285.242	L.	52.539	18.328
C.T.	0+322.648	5524960.934	633282.701	L.C.	48.843	17.207
T.C.	0+399.754	5525029.933	633317.116			
P.O.C.C.	0+417.033	5525034.867	633331.869			
C.T.	0+434.311	5525020.113	633336.803			
T.C.	0+508.914	5524953.354	633303.505			
C.T.	0+540.421	5524923.217	633304.877			

PARAMETER	CURVE DATA		
	(12)	(13)	(14)
R.	11.000	11.000	31.000
Δc	90°00'00"	90°00'00"	58°13'56"
Tc	11.000	11.000	17.266
L.	17.279	17.279	31.507
L.C.	15.556	15.556	30.168

FORT ROUGE STATION - PARKING LANE

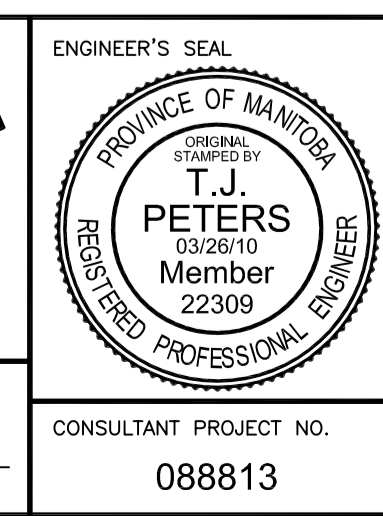
CONTROL POINT	STATION	COORDINATES		PARAMETER	CURVE DATA		
		NORTHING	EASTING		(18)	(19)	(20)
P.O.T.	0+100	5524937.769	633291.072	R.	30.000	25.000	5.000
T.C.	0+126.746	5524962.230	633296.789	Δc	26°37'11"	26°37'11"	90°00'00"
P.O.C.C.	0+138.361	5524973.885	633302.571	Tc	7.097	5.914	5.000
C.T.	0+170.069	5525002.259	633316.724	L.	13.938	11.615	7.854
T.C.	0+177.923	5525004.502	633323.430	L.C.	13.813	11.511	7.071
P.O.T.	0+182.922	5525002.270	633327.904				



LOCATION	APPROVED	B.M. ELEV.
UNDERGROUND	STRUCTURES	
SUPV. U/G STRUCTURES COMMITTEE	DATE	

NO.	REVISIONS	DATE	BY
2	ISSUED FOR TENDER	03/26/10	TJP
1	ISSUED FOR 75% REVIEW	03/03/10	TJP

DESIGNED BY	DRAWN BY	CHECKED BY	APPROVED BY
RTP	TJH	TARAN J. PETERS	DAVE P. KRAHN



THE CITY OF WINNIPEG TRANSIT DEPARTMENT		CITY DRAWING NUMBER P-3317-13
SOUTHWEST RAPID TRANSIT CORRIDOR - STAGE 1 TRANSITWAY CONSTRUCTION, LANDSCAPING & ASSOCIATED WORKS		SHEET 13 OF 72
HORIZ. GEOMETRY - FORT ROUGE STATION AND MORLEY AVENUE		CONSULTANT DRAWING NUMBER C6-C3003-T

C:\CAD\088813\Contract\Contract_6-Roadway\Current\Roadway\C6-300-Control-Line-Geometry.dwg