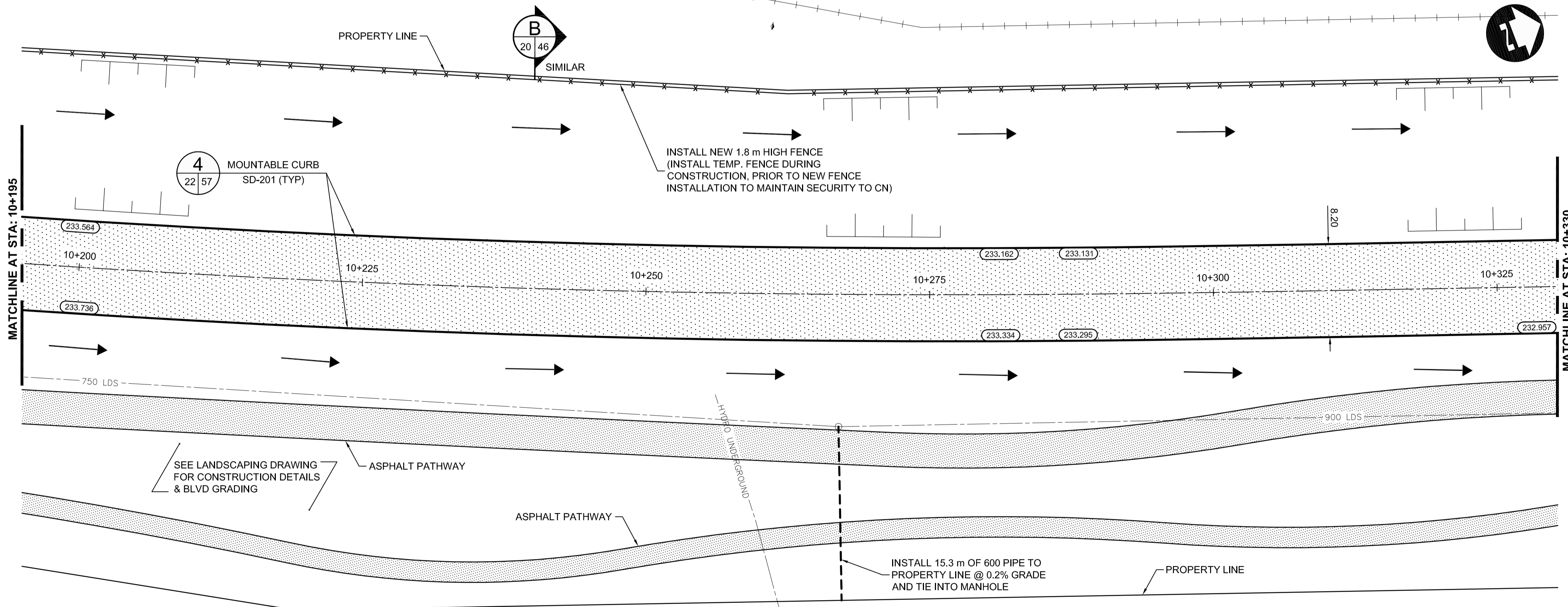
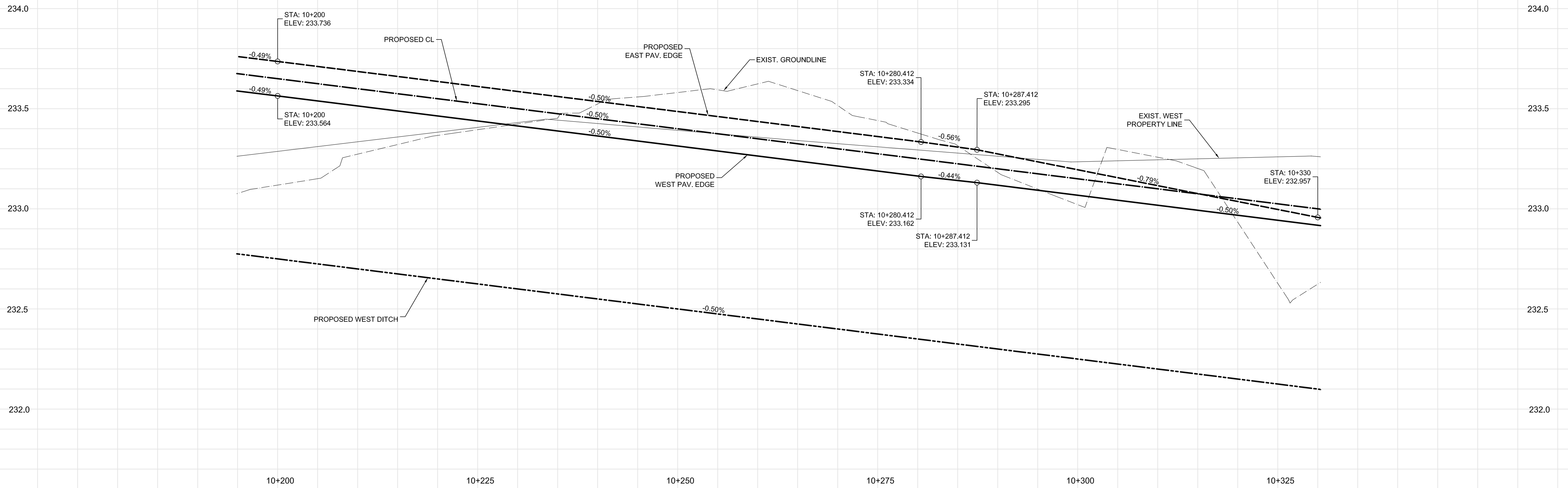


# TRANSITWAY



### CONSTRUCTION NOTES:

- CONTRACTOR SHALL TAKE PRECAUTIONARY STEPS TO AVOID DAMAGE FROM CONSTRUCTION ACTIVITIES TO EXISTING BOULEVARDS AND TREES WITHIN THE LIMITS OF CONSTRUCTION.
- LOCATION OF EXISTING SERVICES ARE TO BE CONFIRMED IN THE FIELD BY THE CONTRACTOR.
- TIE-INS TO BE VERIFIED IN THE FIELD BY THE CONTRACT ADMINISTRATOR.
- LIMITS OF SIDEWALK RENEWALS TO BE FINALIZED IN THE FIELD BY THE CONTRACT ADMINISTRATOR.
- BOULEVARD REPLACEMENT TO BE FINALIZED IN THE FIELD BY THE CONTRACT ADMINISTRATOR.

### METRIC

WHOLE NUMBERS INDICATE MILLIMETRES  
DECIMALIZED NUMBERS INDICATE METRES.

### WARNING

- IF POWER EQUIPMENT OR EXPLOSIVES ARE TO BE USED FOR EXCAVATION ON THIS PROJECT THE CONTRACTOR MUST:
- NOTIFY THE GAS COMPANY OF THE PROPOSED LOCATION OF EXCAVATION.
  - TAKE PRECAUTION TO AVOID DAMAGE TO GAS COMPANY INSTALLATIONS. SEE PROVINCIAL REGULATION 210/72 FOR DETAILS.



LOCATION UNDERGROUND STRUCTURES	APPROVED DATE	B.M. ELEV.
SUPV. U/G STRUCTURES COMMITTEE	DATE	
NOTE: LOCATION OF UNDERGROUND STRUCTURES AS SHOWN ARE BASED ON THE BEST INFORMATION AVAILABLE, BUT NO GUARANTEE IS GIVEN THAT ALL EXISTING UTILITIES ARE SHOWN OR THAT THE GIVEN LOCATIONS ARE EXACT. CONFIRMATION OF EXISTENCE AND EXACT LOCATION OF ALL SERVICES MUST BE OBTAINED FROM THE INDIVIDUAL UTILITIES BEFORE PROCEEDING WITH CONSTRUCTION.		

NO.	REVISIONS	DATE	BY
2	ISSUED FOR TENDER	03/26/10	TJP
1	ISSUED FOR 75% REVIEW	03/03/10	TJP

DESIGNED BY	RTP
DRAWN BY	TJH/PMW
CHECKED BY	ORIGINAL SIGNED BY TARAN J. PETERS
APPROVED BY	ORIGINAL SIGNED BY DAVE P. KRAHN
HOR. SCALE	1 : 250
VERTICAL	1 : 10
DATE	03/26/10

**DILLON CONSULTING**

RELEASED FOR CONSTRUCTION  
ORIGINAL SIGNED BY RANDY FINGAS  
DATE 03/24/10

ENGINEER'S SEAL  
PROVINCE OF MANITOBA  
REGISTERED PROFESSIONAL ENGINEER  
T.J. PETERS  
03/26/10  
Member 22309

CONSULTANT PROJECT NO.  
088813

**THE CITY OF WINNIPEG TRANSIT DEPARTMENT**

Winnipeg

SOUTHWEST RAPID TRANSIT CORRIDOR - STAGE 1  
TRANSITWAY CONSTRUCTION, LANDSCAPING & ASSOCIATED WORKS

PAVING & GRADING - TRANSITWAY - STA. 10+195 TO 10+330

CITY DRAWING NUMBER  
P-3317-22  
SHEET 22 OF 72

CONSULTANT DRAWING NUMBER  
C6-C3012-T