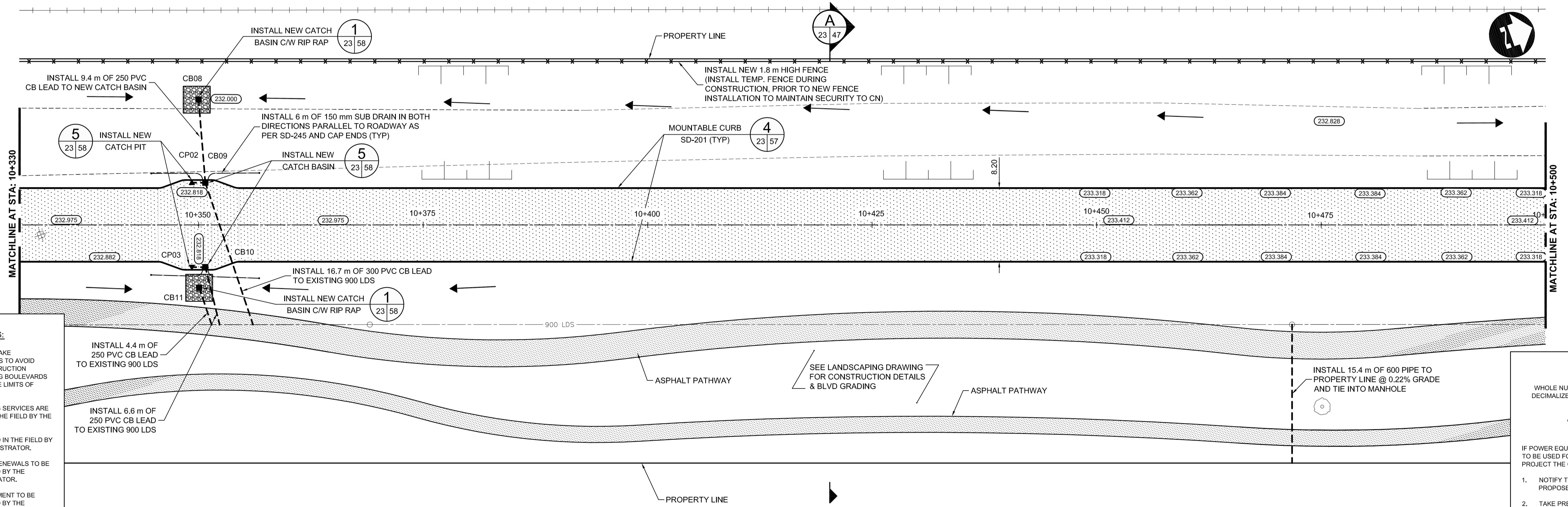
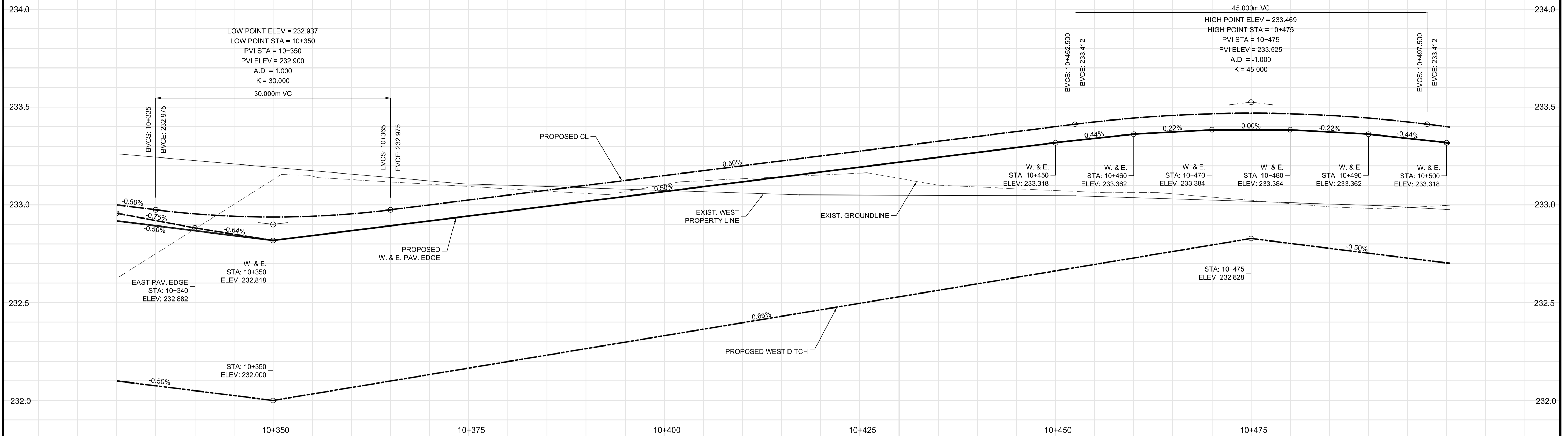


# TRANSITWAY



- CONSTRUCTION NOTES:**
- CONTRACTOR SHALL TAKE PRECAUTIONARY STEPS TO AVOID DAMAGE FROM CONSTRUCTION ACTIVITIES TO EXISTING BOULEVARDS AND TREES WITHIN THE LIMITS OF CONSTRUCTION.
  - LOCATION OF EXISTING SERVICES ARE TO BE CONFIRMED IN THE FIELD BY THE CONTRACTOR.
  - TIE-INS TO BE VERIFIED IN THE FIELD BY THE CONTRACT ADMINISTRATOR.
  - LIMITS OF SIDEWALK RENEWALS TO BE FINALIZED IN THE FIELD BY THE CONTRACT ADMINISTRATOR.
  - BOULEVARD REPLACEMENT TO BE FINALIZED IN THE FIELD BY THE CONTRACT ADMINISTRATOR.

**METRIC**  
 WHOLE NUMBERS INDICATE MILLIMETRES  
 DECIMALIZED NUMBERS INDICATE METRES.

**WARNING**  
 IF POWER EQUIPMENT OR EXPLOSIVES ARE TO BE USED FOR EXCAVATION ON THIS PROJECT THE CONTRACTOR MUST:

- NOTIFY THE GAS COMPANY OF THE PROPOSED LOCATION OF EXCAVATION.
- TAKE PRECAUTION TO AVOID DAMAGE TO GAS COMPANY INSTALLATIONS. SEE PROVINCIAL REGULATION 210/72 FOR DETAILS.

#	COORDINATES		RIM ELEV.	SUMP ELEV.	STATION	PIPE LEAD	LEAD INV.	INV. AT MAIN
	NORTHING	EASTING						
CB08	5524488.644	633062.584	232.000	229.600	10+350	9.4m - 250mm	230.200	230.106
CB09	5524486.362	633071.298	232.788	229.476	10+350	16.7m - 300mm	230.076	228.487
CB10	5524483.029	633080.726	232.788	230.418	10+350	6.6m - 250mm	231.018	228.497
CB11	5524481.719	633082.365	232.400	-	10+350	4.4m - 250mm	-	228.549
CP02	5524484.948	633070.798	232.788	-	10+350	1.5m - 250mm	231.618	231.603
CP03	5524481.615	633080.226	232.788	-	10+350	1.5m - 250mm	231.618	231.603

NOTE: ALL COORDINATES SHOWN ON DRAWINGS ARE NAD 83 UTM.  
 COMBINED SCALE FACTOR TO OBTAIN GROUND DISTANCES IS 0.9997688



LOCATION UNDERGROUND	APPROVED STRUCTURES	B.M. ELEV.
SUPV. U/G STRUCTURES COMMITTEE <td>DATE <td></td> </td>	DATE <td></td>	

NOTE:  
 LOCATION OF UNDERGROUND STRUCTURES AS SHOWN ARE BASED ON THE BEST INFORMATION AVAILABLE, BUT NO GUARANTEE IS GIVEN THAT ALL EXISTING UTILITIES ARE SHOWN OR THAT THE GIVEN LOCATIONS ARE EXACT. CONFIRMATION OF EXISTENCE AND EXACT LOCATION OF ALL SERVICES MUST BE OBTAINED FROM THE INDIVIDUAL UTILITIES BEFORE PROCEEDING WITH CONSTRUCTION.

NO.	REVISIONS	DATE	BY
2	ISSUED FOR TENDER	03/26/10	TJP
1	ISSUED FOR 75% REVIEW	03/03/10	TJP

DESIGNED BY	DRAWN BY	CHECKED BY	APPROVED BY
RTP	TJH/PMW	ORIGINAL SIGNED BY TARAN J. PETERS	ORIGINAL SIGNED BY DAVE P. KRAHN

**DILLON CONSULTING**

RELEASED FOR CONSTRUCTION  
 ORIGINAL SIGNED BY RANDY FINGAS  
 DATE 03/24/10

ENGINEER'S SEAL  
 PROVINCE OF MANITOBA  
 T.J. PETERS  
 03/26/10  
 Member 22309  
 REGISTERED PROFESSIONAL ENGINEER

CONSULTANT PROJECT NO.  
 088813

**THE CITY OF WINNIPEG TRANSIT DEPARTMENT**

SOUTHWEST RAPID TRANSIT CORRIDOR - STAGE 1  
 TRANSITWAY CONSTRUCTION, LANDSCAPING & ASSOCIATED WORKS

PAVING & GRADING - TRANSITWAY - STA. 10+330 TO 10+500

CITY DRAWING NUMBER  
 P-3317-23  
 SHEET 23 OF 72

CONSULTANT DRAWING NUMBER  
 C6-C3013-T

G:\CAD\088813\Contract\Contract\_6-Burway\Current\Roadway\CG-310-Paving-Grading-Burway.dwg