

- CONSTRUCTION NOTES:**
- CONTRACTOR SHALL TAKE PRECAUTIONARY STEPS TO AVOID DAMAGE FROM CONSTRUCTION ACTIVITIES TO EXISTING BOULEVARDS AND TREES WITHIN THE LIMITS OF CONSTRUCTION.
 - LOCATION OF EXISTING SERVICES ARE TO BE CONFIRMED IN THE FIELD BY THE CONTRACTOR.
 - TIE-INS TO BE VERIFIED IN THE FIELD BY THE CONTRACT ADMINISTRATOR.
 - LIMITS OF SIDEWALK RENEWALS TO BE FINALIZED IN THE FIELD BY THE CONTRACT ADMINISTRATOR.
 - BOULEVARD REPLACEMENT TO BE FINALIZED IN THE FIELD BY THE CONTRACT ADMINISTRATOR.

METRIC
WHOLE NUMBERS INDICATE MILLIMETRES
DECIMALIZED NUMBERS INDICATE METRES.

WARNING
IF POWER EQUIPMENT OR EXPLOSIVES ARE TO BE USED FOR EXCAVATION ON THIS PROJECT THE CONTRACTOR MUST:
1. NOTIFY THE GAS COMPANY OF THE PROPOSED LOCATION OF EXCAVATION.
2. TAKE PRECAUTION TO AVOID DAMAGE TO GAS COMPANY INSTALLATIONS. SEE PROVINCIAL REGULATION 210/72 FOR DETAILS.

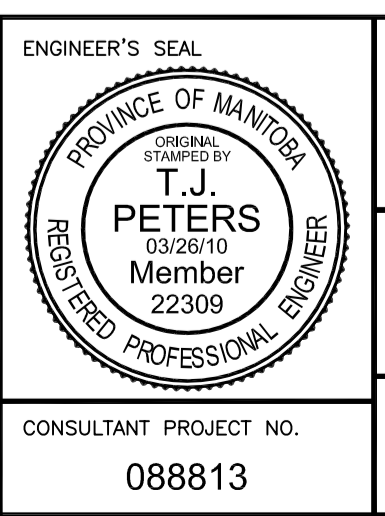
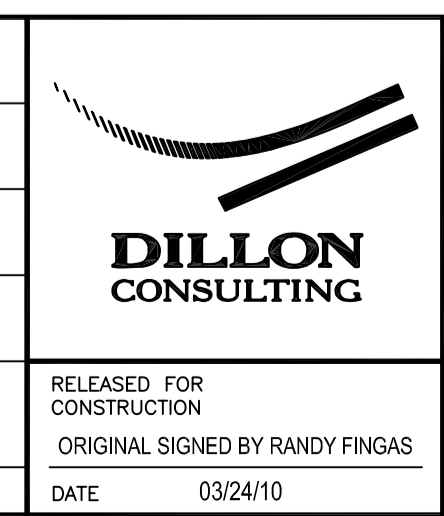
#	COORDINATES		RIM ELEV.	SUMP ELEV.	STATION	PIPE LEAD	LEAD INV.	INV. AT MAIN
	NORTHING	EASTING						
CB12	-	-	-	229.578	-	7.7m - 250mm	230.178	230.101
CB13	5524761.226	633168.479	232.580	229.471	10+641.538	15.9m - 300mm	230.071	227.965
CB14	5524757.893	633177.907	232.580	230.210	10+641.538	6.4m - 250mm	230.810	227.966
CP04	5524759.812	633167.979	232.580	-	10+641.538	1.5m - 250mm	231.410	231.395
CP05	5524756.479	633177.407	232.580	-	10+641.538	1.5m - 250mm	231.410	231.395

NOTE: ALL COORDINATES SHOWN ON DRAWINGS ARE NAD 83 UTM.
COMBINED SCALE FACTOR TO OBTAIN GROUND DISTANCES IS 0.9997688



LOCATION UNDERGROUND STRUCTURES	APPROVED STRUCTURES	B.M. ELEV.
SUPV. U/G STRUCTURES COMMITTEE	DATE	
NOTE: LOCATION OF UNDERGROUND STRUCTURES AS SHOWN ARE BASED ON THE BEST INFORMATION AVAILABLE, BUT NO GUARANTEE IS GIVEN THAT ALL EXISTING UTILITIES ARE SHOWN OR THAT THE GIVEN LOCATIONS ARE EXACT. CONFIRMATION OF EXISTENCE AND EXACT LOCATION OF ALL SERVICES MUST BE OBTAINED FROM THE INDIVIDUAL UTILITIES BEFORE PROCEEDING WITH CONSTRUCTION.		
2	ISSUED FOR TENDER	03/26/10 TJP
1	ISSUED FOR 75% REVIEW	03/03/10 TJP
NO.	REVISIONS	DATE BY

DESIGNED BY	RTP
DRAWN BY	TJH/PMW
CHECKED BY	ORIGINAL SIGNED BY TARAN J. PETERS
APPROVED BY	ORIGINAL SIGNED BY DAVE P. KRAHN
HOR. SCALE	1 : 250
VERTICAL	1 : 10
DATE	03/26/10



THE CITY OF WINNIPEG TRANSIT DEPARTMENT

SOUTHWEST RAPID TRANSIT CORRIDOR - STAGE 1
TRANSITWAY CONSTRUCTION, LANDSCAPING & ASSOCIATED WORKS

PAVING & GRADING - TRANSITWAY - STA. 10+500 TO 10+665

CITY DRAWING NUMBER: P-3317-24
SHEET 24 OF 72
CONSULTANT DRAWING NUMBER: C6-C3014-T

CONSULTANT PROJECT NO.: 088813

G:\CAD\088813\Contract\Contract_6-Burway\Current\Roadway\C6-310-Paving-Grading-Burway.dwg