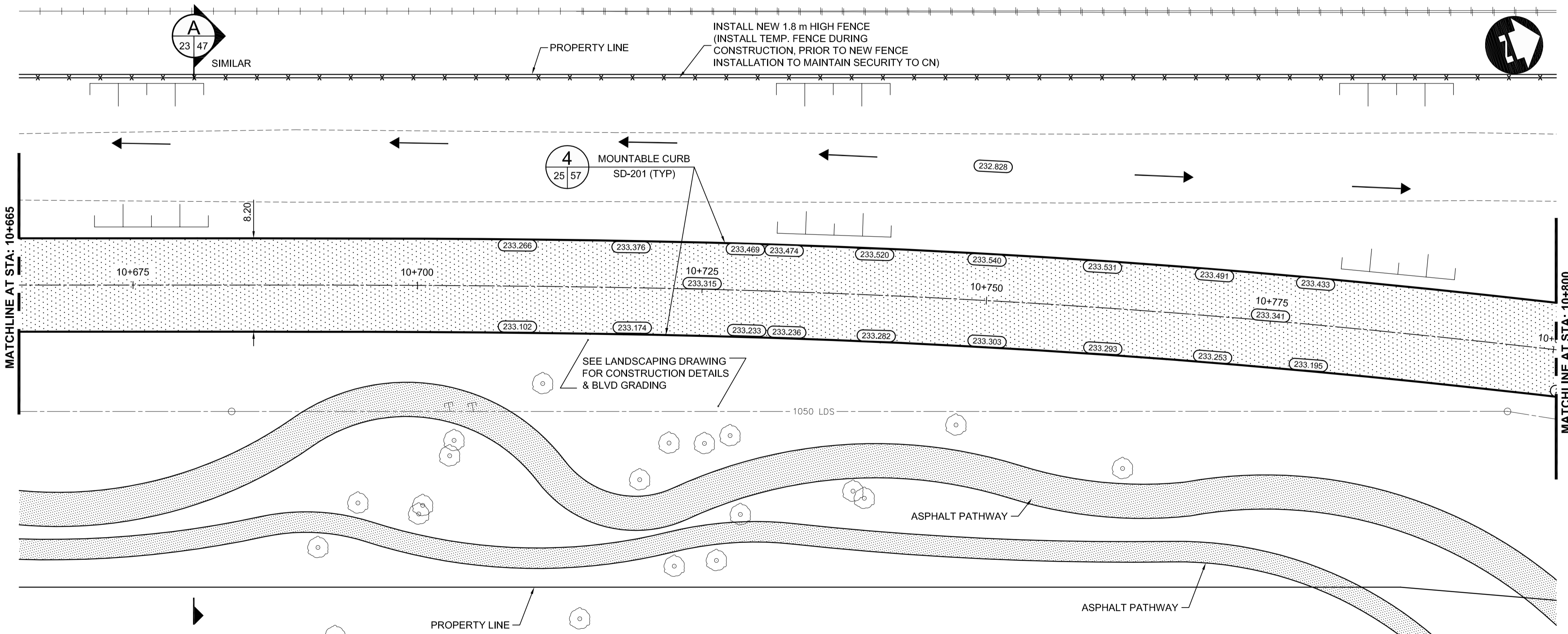
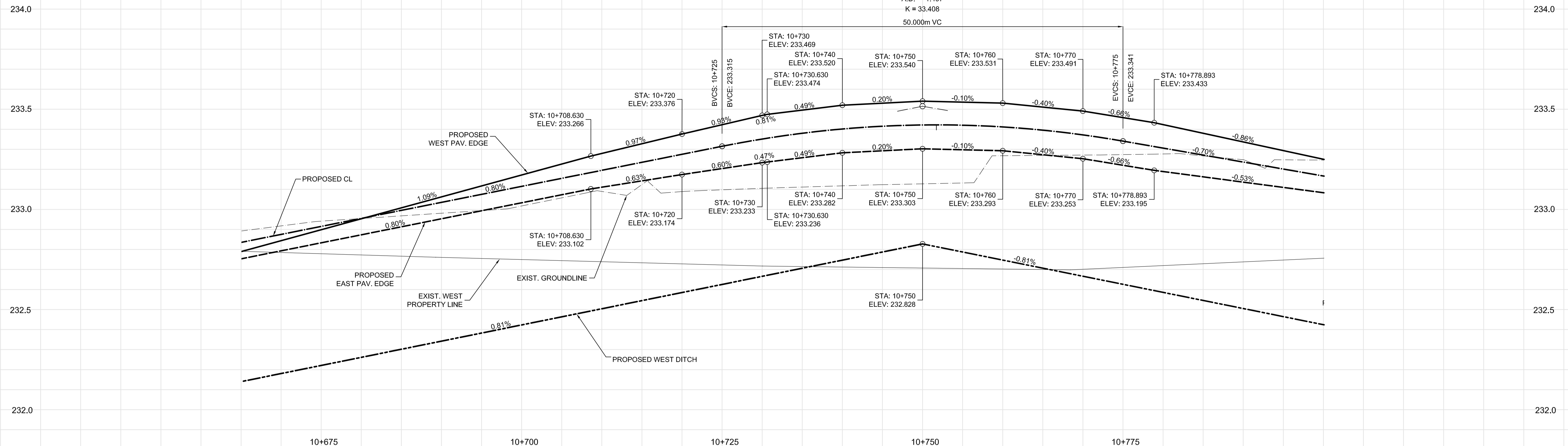


TRANSITWAY

HIGH POINT ELEV = 233.422
 HIGH POINT STA = 10+751.726
 PVI STA = 10+750
 PVI ELEV = 233.515
 A.D. = -1.497
 K = 33.408
 50.000m VC



- CONSTRUCTION NOTES:**
- CONTRACTOR SHALL TAKE PRECAUTIONARY STEPS TO AVOID DAMAGE FROM CONSTRUCTION ACTIVITIES TO EXISTING BOULEVARDS AND TREES WITHIN THE LIMITS OF CONSTRUCTION.
 - LOCATION OF EXISTING SERVICES ARE TO BE CONFIRMED IN THE FIELD BY THE CONTRACTOR.
 - TIE-INS TO BE VERIFIED IN THE FIELD BY THE CONTRACT ADMINISTRATOR.
 - LIMITS OF SIDEWALK RENEWALS TO BE FINALIZED IN THE FIELD BY THE CONTRACT ADMINISTRATOR.
 - BOULEVARD REPLACEMENT TO BE FINALIZED IN THE FIELD BY THE CONTRACT ADMINISTRATOR.

METRIC
 WHOLE NUMBERS INDICATE MILLIMETRES
 DECIMALIZED NUMBERS INDICATE METRES.

WARNING
 IF POWER EQUIPMENT OR EXPLOSIVES ARE TO BE USED FOR EXCAVATION ON THIS PROJECT THE CONTRACTOR MUST:

- NOTIFY THE GAS COMPANY OF THE PROPOSED LOCATION OF EXCAVATION.
- TAKE PRECAUTION TO AVOID DAMAGE TO GAS COMPANY INSTALLATIONS. SEE PROVINCIAL REGULATION 210/72 FOR DETAILS.



LOCATION UNDERGROUND STRUCTURES	APPROVED DATE	SUPV. U/G STRUCTURES COMMITTEE

NOTE:
 LOCATION OF UNDERGROUND STRUCTURES AS SHOWN ARE BASED ON THE BEST INFORMATION AVAILABLE, BUT NO GUARANTEE IS GIVEN THAT ALL EXISTING UTILITIES ARE SHOWN OR THAT THE GIVEN LOCATIONS ARE EXACT. CONFIRMATION OF EXISTENCE AND EXACT LOCATION OF ALL SERVICES MUST BE OBTAINED FROM THE INDIVIDUAL UTILITIES BEFORE PROCEEDING WITH CONSTRUCTION.

NO.	REVISIONS	DATE	BY
2	ISSUED FOR TENDER	03/26/10	TJP
1	ISSUED FOR 75% REVIEW	03/03/10	TJP

DESIGNED BY	DRAWN BY	CHECKED BY	APPROVED BY
RTP	TJH/PMW	ORIGINAL SIGNED BY TARAN J. PETERS	ORIGINAL SIGNED BY DAVE P. KRAHN

DILLON CONSULTING

RELEASED FOR CONSTRUCTION
 ORIGINAL SIGNED BY RANDY FINGAS
 DATE 03/24/10

ENGINEER'S SEAL
 PROVINCE OF MANITOBA
 ORIGINAL SIGNED BY
T.J. PETERS
 03/26/10
 Member
 22309
 REGISTERED PROFESSIONAL ENGINEER

THE CITY OF WINNIPEG
 TRANSIT DEPARTMENT

Winnipeg

SOUTHWEST RAPID TRANSIT CORRIDOR - STAGE 1
 TRANSITWAY CONSTRUCTION, LANDSCAPING & ASSOCIATED WORKS

PAVING & GRADING - TRANSITWAY - STA. 10+665 TO 10+800

CITY DRAWING NUMBER
P-3317-25
 SHEET 25 OF 72

CONSULTANT DRAWING NUMBER
C6-C3015-T

CONSULTANT PROJECT NO.
088813

G:\CAD\088813\Contract\Current\Roadway\C6-310-Paving-Grading-Burway.dwg