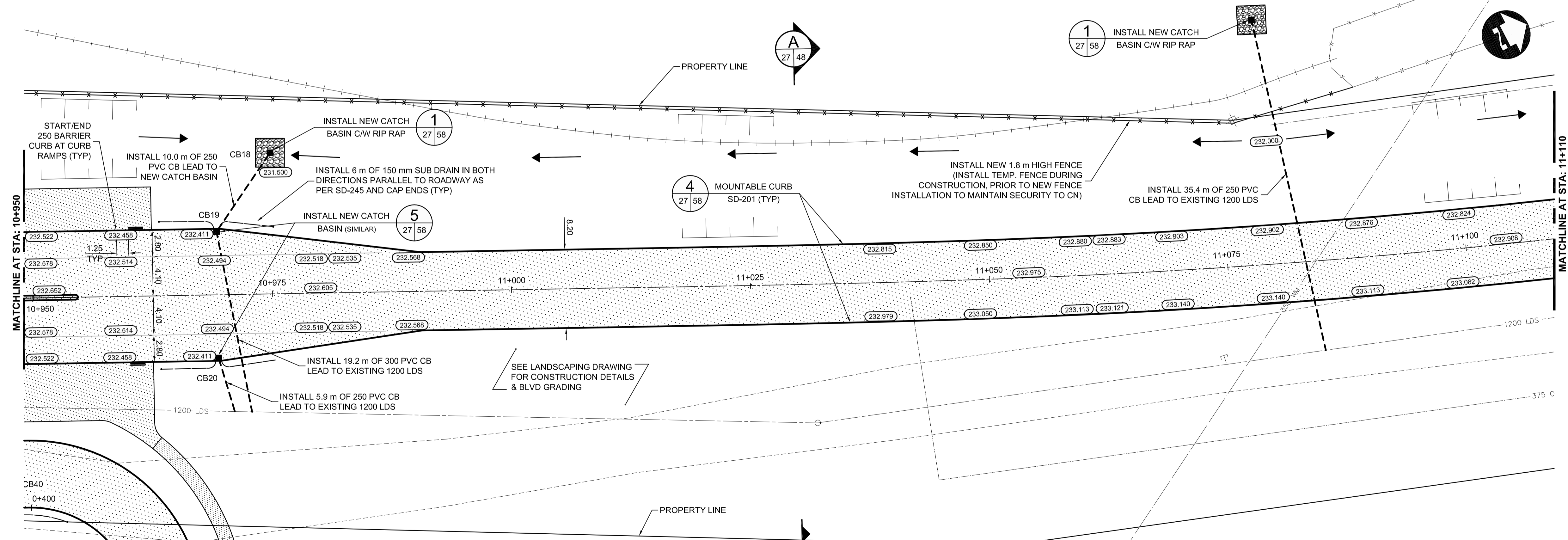
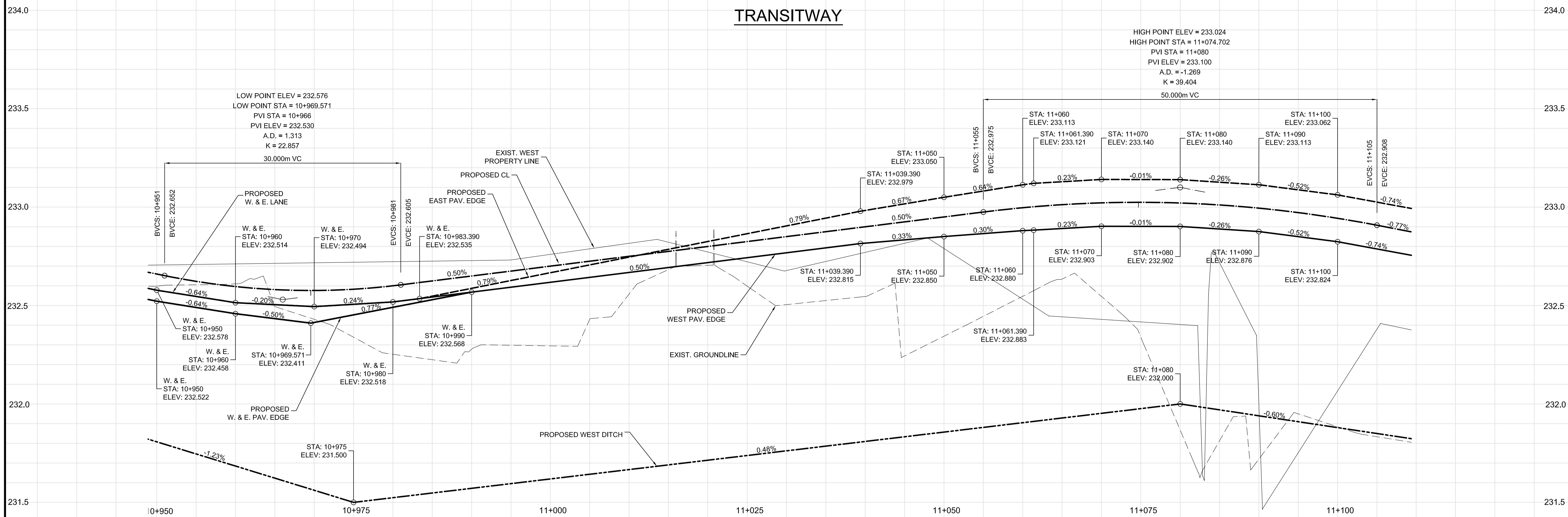


# TRANSITWAY



- CONSTRUCTION NOTES:**
- CONTRACTOR SHALL TAKE PRECAUTIONARY STEPS TO AVOID DAMAGE FROM CONSTRUCTION ACTIVITIES TO EXISTING BOULEVARDS AND TREES WITHIN THE LIMITS OF CONSTRUCTION.
  - LOCATION OF EXISTING SERVICES ARE TO BE CONFIRMED IN THE FIELD BY THE CONTRACTOR.
  - TIE-INS TO BE VERIFIED IN THE FIELD BY THE CONTRACTOR.
  - LIMITS OF SIDEWALK RENEWALS TO BE FINALIZED IN THE FIELD BY THE CONTRACTOR.
  - BOULEVARD REPLACEMENT TO BE FINALIZED IN THE FIELD BY THE CONTRACTOR.

**METRIC**

WHOLE NUMBERS INDICATE MILLIMETRES  
DECIMALIZED NUMBERS INDICATE METRES.

**WARNING**

- IF POWER EQUIPMENT OR EXPLOSIVES ARE TO BE USED FOR EXCAVATION ON THIS PROJECT THE CONTRACTOR MUST:
- NOTIFY THE GAS COMPANY OF THE PROPOSED LOCATION OF EXCAVATION.
  - TAKE PRECAUTION TO AVOID DAMAGE TO GAS COMPANY INSTALLATIONS. SEE PROVINCIAL REGULATION 210/72 FOR DETAILS.

| #    | COORDINATES |            | RIM ELEV. | SUMP ELEV. | STATION    | PIPE LEAD     | LEAD INV. | INV. AT MAIN |
|------|-------------|------------|-----------|------------|------------|---------------|-----------|--------------|
|      | NORTHING    | EASTING    |           |            |            |               |           |              |
| CB18 | 5525069.398 | 633295.834 | 231.500   | 229.100    | 10+975     | 10m - 250mm   | 229.700   | 229.600      |
| CB19 | 5525060.765 | 633300.306 | 232.411   | 228.970    | 10+969.571 | 19.2m - 300mm | 229.570   | 227.550      |
| CB20 | 5525054.600 | 633312.656 | 232.411   | 230.011    | 10+969.571 | 5.9m - 250mm  | 230.611   | 227.600      |

NOTE: ALL COORDINATES SHOWN ON DRAWINGS ARE NAD 83 UTM.  
COMBINED SCALE FACTOR TO OBTAIN GROUND DISTANCES IS 0.9997688

**APEGM**  
Certificate of Authorization  
**Dillon Consulting Limited (MB)**  
No. 1789 Date: \_\_\_\_\_

| LOCATION UNDERGROUND  | APPROVED STRUCTURES | B.M. ELEV. |
|---|---------------------|------------|
| SUPY. U/G STRUCTURES COMMITTEE  | DATE                |            |
| NOTE:<br>LOCATION OF UNDERGROUND STRUCTURES AS SHOWN ARE BASED ON THE BEST INFORMATION AVAILABLE, BUT NO GUARANTEE IS GIVEN THAT ALL EXISTING UTILITIES ARE SHOWN OR THAT THE GIVEN LOCATIONS ARE EXACT. CONFIRMATION OF EXISTENCE AND EXACT LOCATION OF ALL SERVICES MUST BE OBTAINED FROM THE INDIVIDUAL UTILITIES BEFORE PROCEEDING WITH CONSTRUCTION. |                     |            |

| NO. | REVISIONS             | DATE     | BY  |
|-----|-----------------------|----------|-----|
| 2   | ISSUED FOR TENDER     | 03/26/10 | TJP |
| 1   | ISSUED FOR 75% REVIEW | 03/03/10 | TJP |

| DESIGNED BY | DRAWN BY | CHECKED BY                         | APPROVED BY                      |
|-------------|----------|------------------------------------|----------------------------------|
| RTP         | TJH/PMW  | ORIGINAL SIGNED BY TARAN J. PETERS | ORIGINAL SIGNED BY DAVE P. KRAHN |

**DILLON CONSULTING**

RELEASED FOR CONSTRUCTION  
ORIGINAL SIGNED BY RANDY FINGAS  
DATE 03/24/10

ENGINEER'S SEAL  
PROVINCE OF MANITOBA  
REGISTERED PROFESSIONAL ENGINEER  
**T.J. PETERS**  
Member 22309

**THE CITY OF WINNIPEG**  
TRANSIT DEPARTMENT

SOUTHWEST RAPID TRANSIT CORRIDOR - STAGE 1  
TRANSITWAY CONSTRUCTION, LANDSCAPING & ASSOCIATED WORKS

CITY DRAWING NUMBER  
**P-3317-27**  
SHEET 27 OF 72

CONSULTANT DRAWING NUMBER  
**C6-C3017-T**

PAVING & GRADING - TRANSITWAY - STA. 10+950 TO 11+110  
CONSULTANT PROJECT NO. 088813

G:\CAD\088813\Contract\Contract\_6-Burway\Current\Roadway\C6-310-Paving-Grading-Burway.dwg