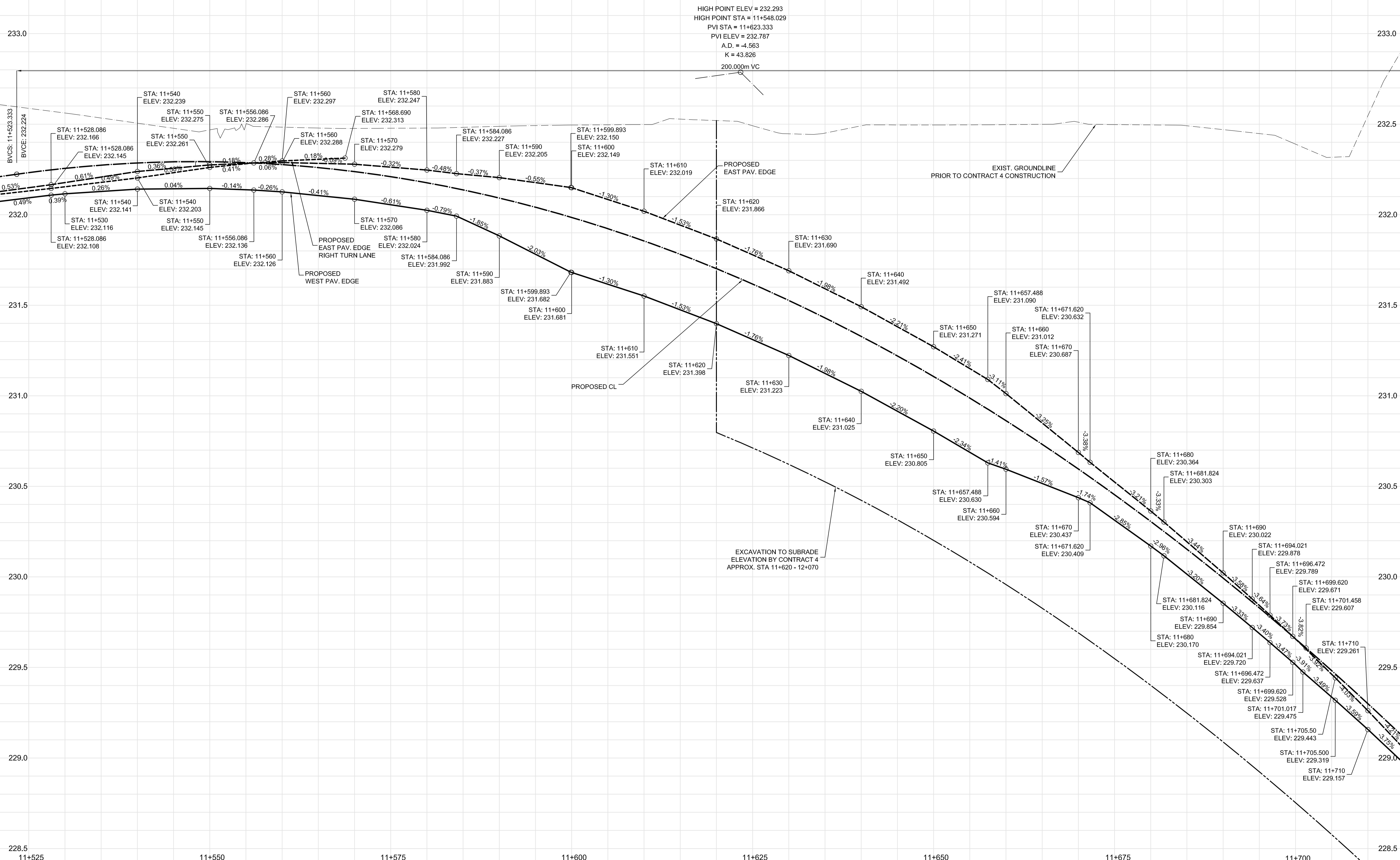


# TRANSITWAY



C:\CAD\088813\Contract\Current\Roadway\CG-310-Paving-Grading-Burway.dwg

**LOCATION APPROVED UNDERGROUND STRUCTURES**

SUPPLY U/G STRUCTURES COMMITTEE DATE

NOTE:  
 LOCATION OF UNDERGROUND STRUCTURES AS SHOWN ARE BASED ON THE BEST INFORMATION AVAILABLE, BUT NO GUARANTEE IS GIVEN THAT ALL EXISTING UTILITIES ARE SHOWN OR THAT THE GIVEN LOCATIONS ARE EXACT. CONFIRMATION OF EXISTENCE AND EXACT LOCATION OF ALL SERVICES MUST BE OBTAINED FROM THE INDIVIDUAL UTILITIES BEFORE PROCEEDING WITH CONSTRUCTION.

B.M. ELEV.	NO.	REVISIONS	DATE	BY
	2	ISSUED FOR TENDER	03/26/10	TJP
	1	ISSUED FOR 75% REVIEW	03/03/10	TJP

DESIGNED BY	RTP
DRAWN BY	TJH/PMW
CHECKED BY	ORIGINAL SIGNED BY TARAN J. PETERS
APPROVED BY	ORIGINAL SIGNED BY DAVE P. KRAHN
HOR. SCALE	1 : 250
VERTICAL	1 : 10
DATE	03/26/10

**DILLON CONSULTING**

RELEASED FOR CONSTRUCTION  
 ORIGINAL SIGNED BY RANDY FINGAS  
 DATE 03/24/10

ENGINEER'S SEAL

CONSULTANT PROJECT NO. 088813

**THE CITY OF WINNIPEG TRANSIT DEPARTMENT**

Winnipeg

SOUTHWEST RAPID TRANSIT CORRIDOR - STAGE 1  
 TRANSITWAY CONSTRUCTION, LANDSCAPING & ASSOCIATED WORKS

PAVING & GRADING - TRANSITWAY - STA. 11+520 TO 11+715 (PROFILE)

CITY DRAWING NUMBER: P-3317-32  
 SHEET OF 32 OF 72  
 CONSULTANT DRAWING NUMBER: C6-C3022-T

**APEGM**  
 Certificate of Authorization  
**Dillon Consulting Limited (MB)**  
 No. 1789 Date: \_\_\_\_\_