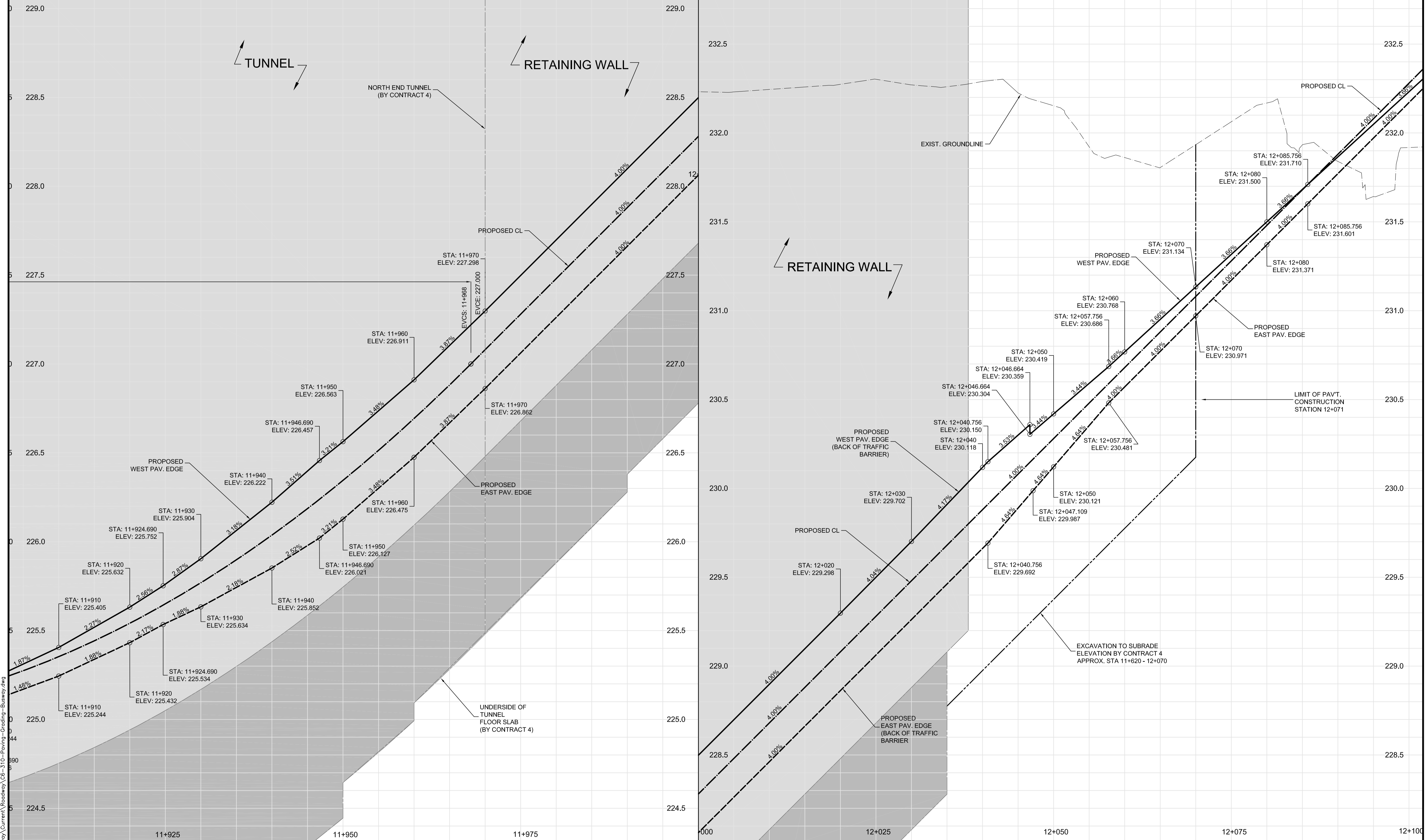


TRANSITWAY

TRANSITWAY



C:\CAD\088813\Contract\Contract 6-Burway\Current\Roadway\C6-310-Paving-Grading-Burway.dwg



LOCATION UNDERGROUND STRUCTURES	APPROVED STRUCTURES	B.M. ELEV.
SUPV. U/G STRUCTURES COMMITTEE	DATE	
NOTE: LOCATION OF UNDERGROUND STRUCTURES AS SHOWN ARE BASED ON THE BEST INFORMATION AVAILABLE, BUT NO GUARANTEE IS GIVEN THAT ALL EXISTING UTILITIES ARE SHOWN OR THAT THE GIVEN LOCATIONS ARE EXACT. CONFIRMATION OF EXISTENCE AND EXACT LOCATION OF ALL SERVICES MUST BE OBTAINED FROM THE INDIVIDUAL UTILITIES BEFORE PROCEEDING WITH CONSTRUCTION.		
2	ISSUED FOR TENDER	03/26/10 TJP
1	ISSUED FOR 75% REVIEW	03/03/10 TJP
NO.	REVISIONS	DATE BY

DESIGNED BY	DRAWN BY	CHECKED BY	APPROVED BY	HOR. SCALE	VERTICAL	RELEASED FOR CONSTRUCTION
RTP	TJH/PMW	ORIGINAL SIGNED BY TARAN J. PETERS	ORIGINAL SIGNED BY DAVE P. KRAHN	1 : 250	1 : 10	ORIGINAL SIGNED BY RANDY FINGAS
DATE	DATE	DATE	DATE	DATE	DATE	DATE
	03/26/10	03/24/10	03/26/10	03/26/10	03/24/10	03/24/10

PROVINCE OF MANITOBA

REGISTERED PROFESSIONAL ENGINEER

T.J. PETERS
Member 22309

CONSULTANT PROJECT NO. 088813

THE CITY OF WINNIPEG
TRANSIT DEPARTMENT

CITY DRAWING NUMBER
P-3317-36

SHEET **36** OF **72**

CONSULTANT DRAWING NUMBER
C6-C3026-T

SOUTHWEST RAPID TRANSIT CORRIDOR - STAGE 1
TRANSITWAY CONSTRUCTION, LANDSCAPING & ASSOCIATED WORKS

PAVING & GRADING - TRANSITWAY - STA. 11+905 TO 12+100 (PROFILE)