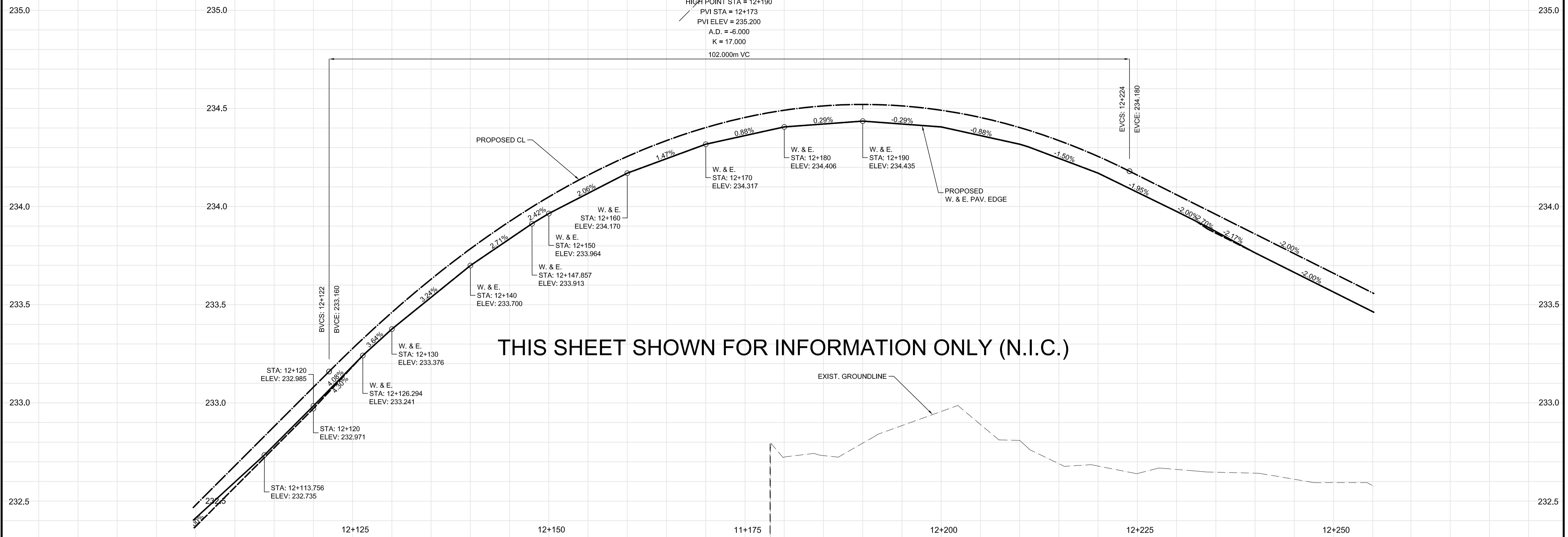
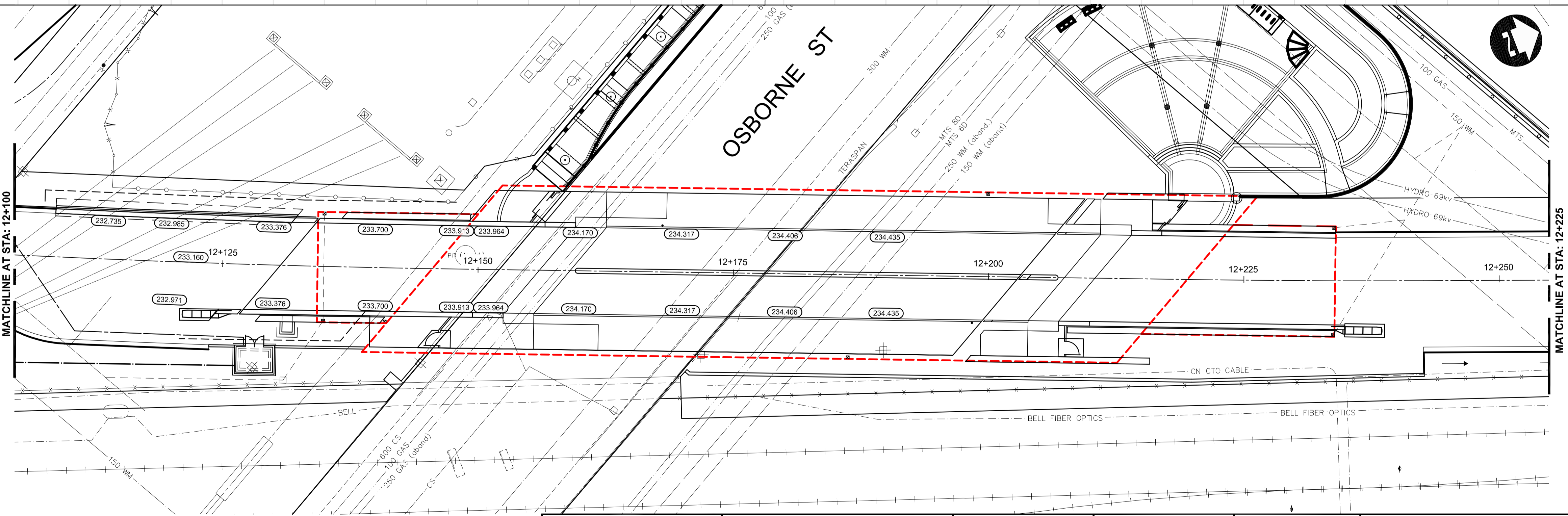


TRANSITWAY - OSBORNE OVERPASS



THIS SHEET SHOWN FOR INFORMATION ONLY (N.I.C.)



METRIC
WHOLE NUMBERS INDICATE MILLIMETRES
DECIMALIZED NUMBERS INDICATE METRES.



LOCATION UNDERGROUND	APPROVED STRUCTURES	B.M. ELEV.
SUPV. U/G STRUCTURES COMMITTEE	DATE	
NOTE: LOCATION OF UNDERGROUND STRUCTURES AS SHOWN ARE BASED ON THE BEST INFORMATION AVAILABLE, BUT NO GUARANTEE IS GIVEN THAT ALL EXISTING UTILITIES ARE SHOWN OR THAT THE GIVEN LOCATIONS ARE EXACT. CONFIRMATION OF EXISTENCE AND EXACT LOCATION OF ALL SERVICES MUST BE OBTAINED FROM THE INDIVIDUAL UTILITIES BEFORE PROCEEDING WITH CONSTRUCTION.		
2	ISSUED FOR TENDER	03/26/10 TJP
1	ISSUED FOR 75% REVIEW	03/03/10 TJP
NO.	REVISIONS	DATE BY

DESIGNED BY	DRAWN BY	CHECKED BY	APPROVED BY	HOR. SCALE	VERTICAL
RTP	TJH/PMW	ORIGINAL SIGNED BY TARAN J. PETERS	ORIGINAL SIGNED BY DAVE P. KRAHN	1 : 250	1 : 10
DATE	DATE	DATE	DATE		
03/26/10	03/24/10				

DILLON CONSULTING
 RELEASED FOR CONSTRUCTION
 ORIGINAL SIGNED BY RANDY FINGAS
 DATE 03/24/10

ENGINEER'S SEAL
 PROVINCE OF MANITOBA
 ORIGINAL SIGNED BY
T.J. PETERS
 03/26/10
 Member 22309
 REGISTERED PROFESSIONAL ENGINEER

THE CITY OF WINNIPEG
 TRANSIT DEPARTMENT
 SOUTHWEST RAPID TRANSIT CORRIDOR - STAGE 1
 TRANSITWAY CONSTRUCTION, LANDSCAPING & ASSOCIATED WORKS
 PAVING & GRADING - TRANSITWAY - STA. 12+100 TO 12+225

CITY DRAWING NUMBER P-3317-37
 SHEET 37 OF 72
 CONSULTANT DRAWING NUMBER C6-C3027-T

CONSULTANT PROJECT NO. 088813

G:\CAD\088813\Contract\Current\Roadway\C6-310-Paving-Grading-Burway.dwg