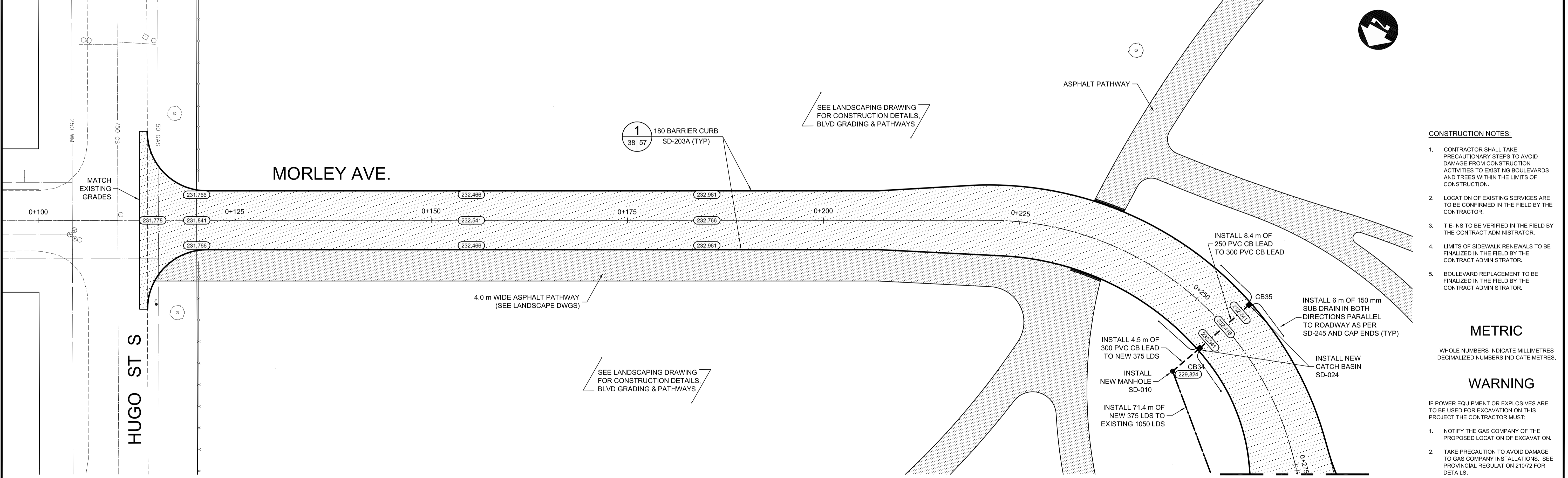
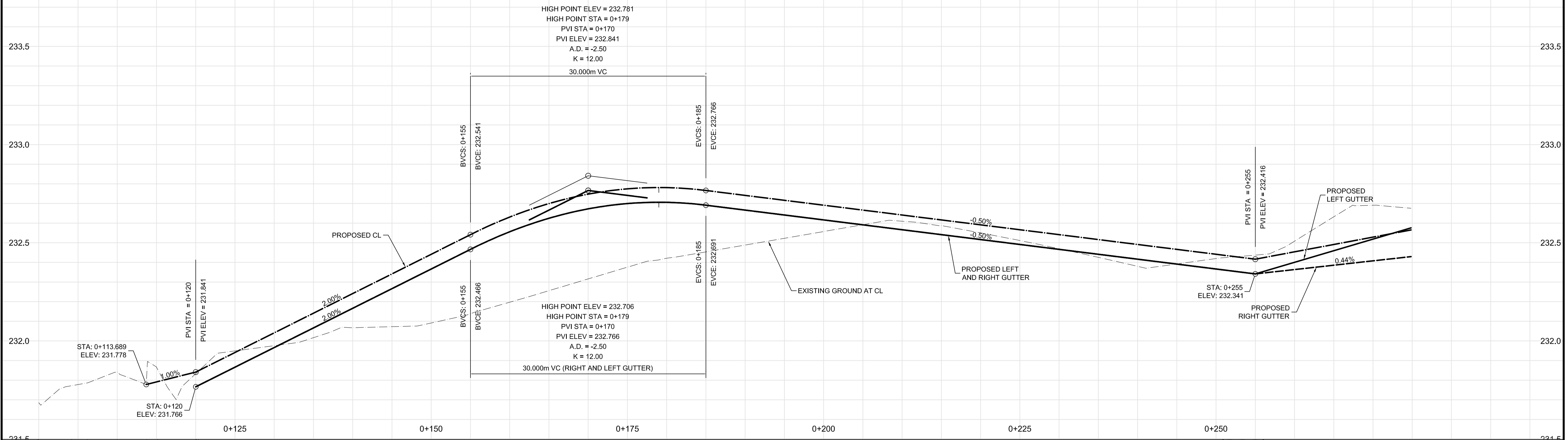


MORLEY AVENUE EXTENSION TO FORT ROUGE STATION



- CONSTRUCTION NOTES:**
- CONTRACTOR SHALL TAKE PRECAUTIONARY STEPS TO AVOID DAMAGE FROM CONSTRUCTION ACTIVITIES TO EXISTING BOULEVARDS AND TREES WITHIN THE LIMITS OF CONSTRUCTION.
 - LOCATION OF EXISTING SERVICES ARE TO BE CONFIRMED IN THE FIELD BY THE CONTRACTOR.
 - TIE-INS TO BE VERIFIED IN THE FIELD BY THE CONTRACT ADMINISTRATOR.
 - LIMITS OF SIDEWALK RENEWALS TO BE FINALIZED IN THE FIELD BY THE CONTRACT ADMINISTRATOR.
 - BOULEVARD REPLACEMENT TO BE FINALIZED IN THE FIELD BY THE CONTRACT ADMINISTRATOR.

METRIC
WHOLE NUMBERS INDICATE MILLIMETRES
DECIMALIZED NUMBERS INDICATE METRES.

WARNING
IF POWER EQUIPMENT OR EXPLOSIVES ARE TO BE USED FOR EXCAVATION ON THIS PROJECT THE CONTRACTOR MUST:

- NOTIFY THE GAS COMPANY OF THE PROPOSED LOCATION OF EXCAVATION.
- TAKE PRECAUTION TO AVOID DAMAGE TO GAS COMPANY INSTALLATIONS. SEE PROVINCIAL REGULATION 210/72 FOR DETAILS.

#	COORDINATES		RIM ELEV.	SUMP ELEV.	STATION	PIPE LEAD	LEAD INV.	INV. AT MAIN
	NORTHING	EASTING						
CB34	5524915.771	633323.342	232.341	229.941	0+255	8.4m - 250mm	230.541	230.475
CB35	5524907.306	633320.284	232.341	229.827	0+255	4.5m - 250mm	230.427	230.382

NOTE: ALL COORDINATES SHOWN ON DRAWINGS ARE NAD 83 UTM.
COMBINED SCALE FACTOR TO OBTAIN GROUND DISTANCES IS 0.9997688

APEGM
Certificate of Authorization
Dillon Consulting Limited (MB)
No. 1789 Date: _____

LOCATION UNDERGROUND	APPROVED STRUCTURES	B.M. ELEV.
SUPPLY U/G STRUCTURES COMMITTEE <td>DATE</td> <td></td>	DATE	
NOTE: LOCATION OF UNDERGROUND STRUCTURES AS SHOWN ARE BASED ON THE BEST INFORMATION AVAILABLE, BUT NO GUARANTEE IS GIVEN THAT ALL EXISTING UTILITIES ARE SHOWN OR THAT THE GIVEN LOCATIONS ARE EXACT. CONFIRMATION OF EXISTENCE AND EXACT LOCATION OF ALL SERVICES MUST BE OBTAINED FROM THE INDIVIDUAL UTILITIES BEFORE PROCEEDING WITH CONSTRUCTION.		
2	ISSUED FOR TENDER	03/26/10 TJP
1	ISSUED FOR 75% REVIEW	03/03/10 TJP
NO.	REVISIONS	DATE BY

DESIGNED BY	DRAWN BY	CHECKED BY	APPROVED BY	HOR. SCALE	VERTICAL	RELEASED FOR CONSTRUCTION
RTP	TJH/PMW	ORIGINAL SIGNED BY TARAN J. PETERS	ORIGINAL SIGNED BY DAVE P. KRAHN	1 : 250	1 : 10	ORIGINAL SIGNED BY RANDY FINGAS
DATE	DATE	DATE	DATE	DATE	DATE	DATE
03/26/10	03/26/10	03/26/10	03/26/10	03/24/10		

DILLON CONSULTING

ENGINEER'S SEAL
PROVINCE OF MANITOBA
REGISTERED PROFESSIONAL ENGINEER
T.J. PETERS
03/26/10
Member 22309

THE CITY OF WINNIPEG TRANSIT DEPARTMENT
SOUTHWEST RAPID TRANSIT CORRIDOR - STAGE 1
TRANSITWAY CONSTRUCTION, LANDSCAPING & ASSOCIATED WORKS
PAVING & GRADING - FORT ROUGE STATION 1

CITY DRAWING NUMBER: P-3317-38
SHEET 38 OF 72
CONSULTANT DRAWING NUMBER: C6-C3028-T

CONSULTANT PROJECT NO.: 088813

G:\CAD\088813\Contract\Contract_6-Burway\Current\Roadway\C6-310-Paving-Grading-Burway.dwg