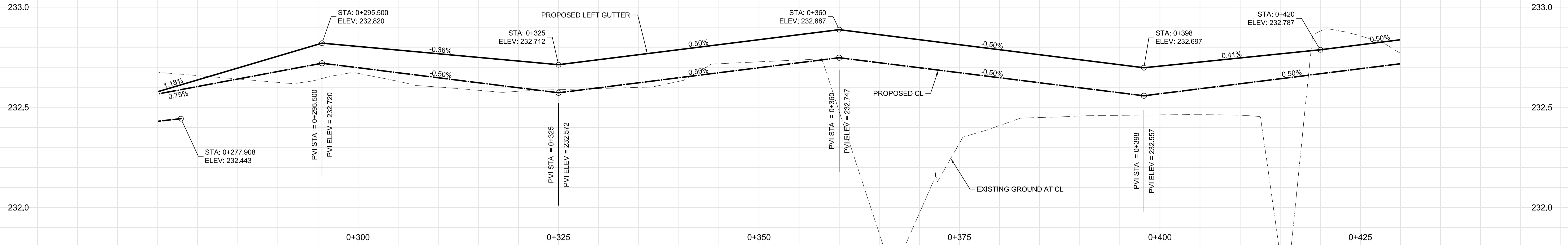
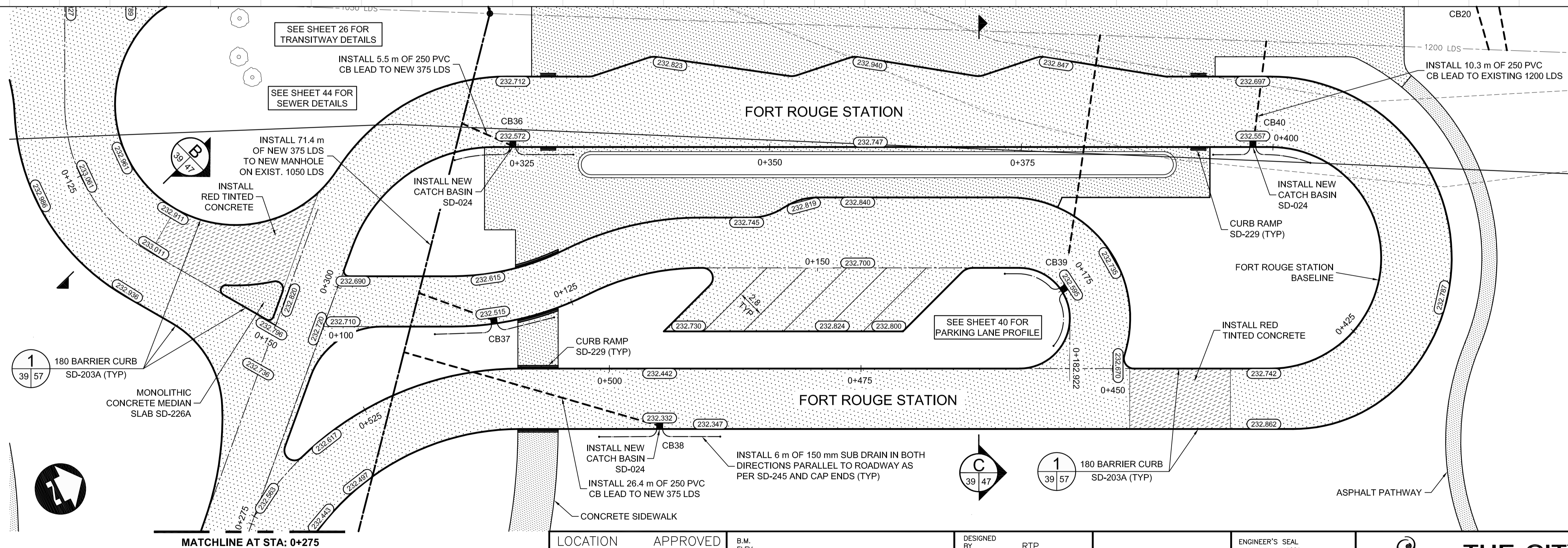
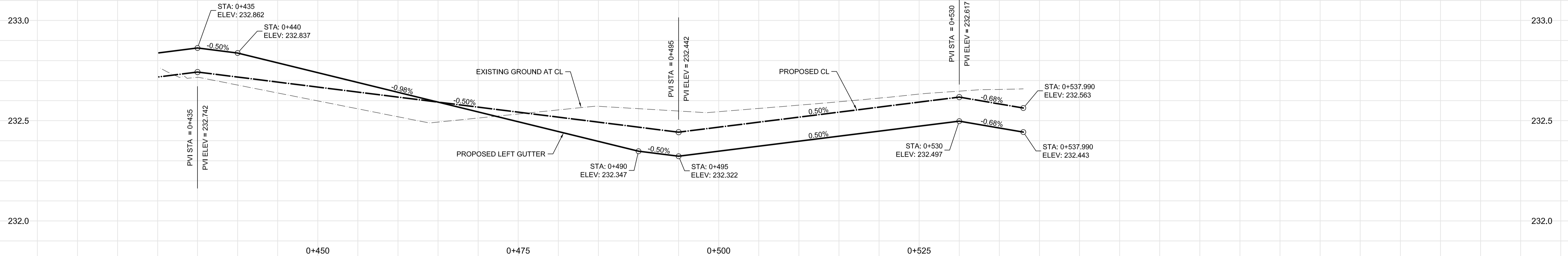


FORT ROUGE STATION



FORT ROUGE STATION CONTINUED



- CONSTRUCTION NOTES:**
- CONTRACTOR SHALL TAKE PRECAUTIONARY STEPS TO AVOID DAMAGE FROM CONSTRUCTION ACTIVITIES TO EXISTING BOULEVARDS AND TREES WITHIN THE LIMITS OF CONSTRUCTION.
  - LOCATION OF EXISTING SERVICES ARE TO BE CONFIRMED IN THE FIELD BY THE CONTRACTOR.
  - TIE-INS TO BE VERIFIED IN THE FIELD BY THE CONTRACT ADMINISTRATOR.
  - LIMITS OF SIDEWALK RENEWALS TO BE FINALIZED IN THE FIELD BY THE CONTRACT ADMINISTRATOR.
  - BOULEVARD REPLACEMENT TO BE FINALIZED IN THE FIELD BY THE CONTRACT ADMINISTRATOR.

METRIC

WHOLE NUMBERS INDICATE MILLIMETRES  
DECIMALIZED NUMBERS INDICATE METRES.

WARNING

- IF POWER EQUIPMENT OR EXPLOSIVES ARE TO BE USED FOR EXCAVATION ON THIS PROJECT THE CONTRACTOR MUST:
- NOTIFY THE GAS COMPANY OF THE PROPOSED LOCATION OF EXCAVATION.
  - TAKE PRECAUTION TO AVOID DAMAGE TO GAS COMPANY INSTALLATIONS. SEE PROVINCIAL REGULATION 210/72 FOR DETAILS.

#	COORDINATES		RIM ELEV.	SUMP ELEV.	STATION	PIPE LEAD	LEAD INV.	INV. AT MAIN
	NORTHING	EASTING						
CB36	5524962.567	633283.516	232.572	230.172	0+324.500	5.5m - 250mm	230.772	229.294
CB37	5524953.100	633298.392	232.515	230.115	0+117	8.0m - 250mm	230.715	229.555
CB38	5524963.127	633315.085	232.332	229.932	0+505	26.4m - 250mm	230.532	229.646
CB39	5525004.990	633320.590	232.595	230.195	0+175	25.5m - 250mm	230.795	227.600
CB40	5525028.363	633316.333	232.557	229.000	0+398	10.4m - 250mm	229.600	227.550

NOTE: ALL COORDINATES SHOWN ON DRAWINGS ARE NAD 83 UTM.  
COMBINED SCALE FACTOR TO OBTAIN GROUND DISTANCES IS 0.9997688

**APEGM**  
Certificate of Authorization  
**Dillon Consulting Limited (MB)**  
No. 1789 Date: \_\_\_\_\_

LOCATION UNDERGROUND	APPROVED STRUCTURES	B.M. ELEV.

NOTE:  
LOCATION OF UNDERGROUND STRUCTURES AS SHOWN ARE BASED ON THE BEST INFORMATION AVAILABLE BUT NO GUARANTEE IS GIVEN THAT ALL EXISTING UTILITIES ARE SHOWN OR THAT THE GIVEN LOCATIONS ARE EXACT. CONFIRMATION OF EXISTENCE AND EXACT LOCATION OF ALL SERVICES MUST BE OBTAINED FROM THE INDIVIDUAL UTILITIES BEFORE PROCEEDING WITH CONSTRUCTION.

NO.	REVISIONS	DATE	BY
2	ISSUED FOR TENDER	03/26/10	TJP
1	ISSUED FOR 75% REVIEW	03/03/10	TJP

DESIGNED BY	RTM
DRAWN BY	TJH/PMW
CHECKED BY	ORIGINAL SIGNED BY TARAN J. PETERS
APPROVED BY	ORIGINAL SIGNED BY DAVE P. KRAHN
HOR. SCALE	1 : 250
VERTICAL	1 : 10
DATE	03/26/10

ENGINEER'S SEAL  
PROVINCE OF MANITOBA  
REGISTERED PROFESSIONAL ENGINEER  
**T.J. PETERS**  
Member 22309  
03/26/10

**THE CITY OF WINNIPEG**  
TRANSIT DEPARTMENT  
Winnipeg  
SOUTHWEST RAPID TRANSIT CORRIDOR - STAGE 1  
TRANSITWAY CONSTRUCTION, LANDSCAPING & ASSOCIATED WORKS  
PAVING & GRADING - FORT ROUGE STATION 2  
CITY DRAWING NUMBER P-3317-39  
SHEET 39 OF 72  
CONSULTANT DRAWING NUMBER C6-C3029-T  
CONSULTANT PROJECT NO. 088813